

INDEX OF SHEETS

- SHEET NO. 1 TITLE PAGE
 2-3 TYPICAL CROSS-SECTION OF IMPROVEMENT (2 1/2" CRUSHED GRAVEL MIXED IN PLACE SURFACE COURSE WITH
 4 BANKING AND WIDENING TABLES (OUTBACK ASPHALT AND PRIME COAT OF REFINED TAR, ITEMS 26, 30 & 31)
 5-11 PLAN AND PROFILE
 12 CULVERT, STA. 762+46
 13 SUPERSTRUCTURE DETAILS OF BRIDGE, STA. 770+68
 14 ABUTMENT DETAILS STA 770+68
 15 BRIDGE RAIL DETAILS, STA 770+68 (S-30A)
 16 STD. STRUCT. SHEET, S-28, DROP INLETS.
 17 STD. STRUCT. SHEET, S-30, GUARD RAIL.
 18 STD. STRUCT. SHEET, S-30A, CATCH BASINS.
 19 STD. STRUCT. SHEET, S-B 20, BRIDGE DETAILS.
 20 STD. STRUCT. SHEET, S-40, BARRICADES, SIGNS, & LIGHTS.
 21 STD. STRUCT. SHEET, S-41, TYPICAL GRADING, CROSS SECTS.
 22-45 CROSS SECTIONS.

STANDARD STRUCTURE SHEETS APPROVED BY THE CHIEF ENGINEER
 S-28 4-26-41
 S-30 5-12-41
 S-30A 4-19-41

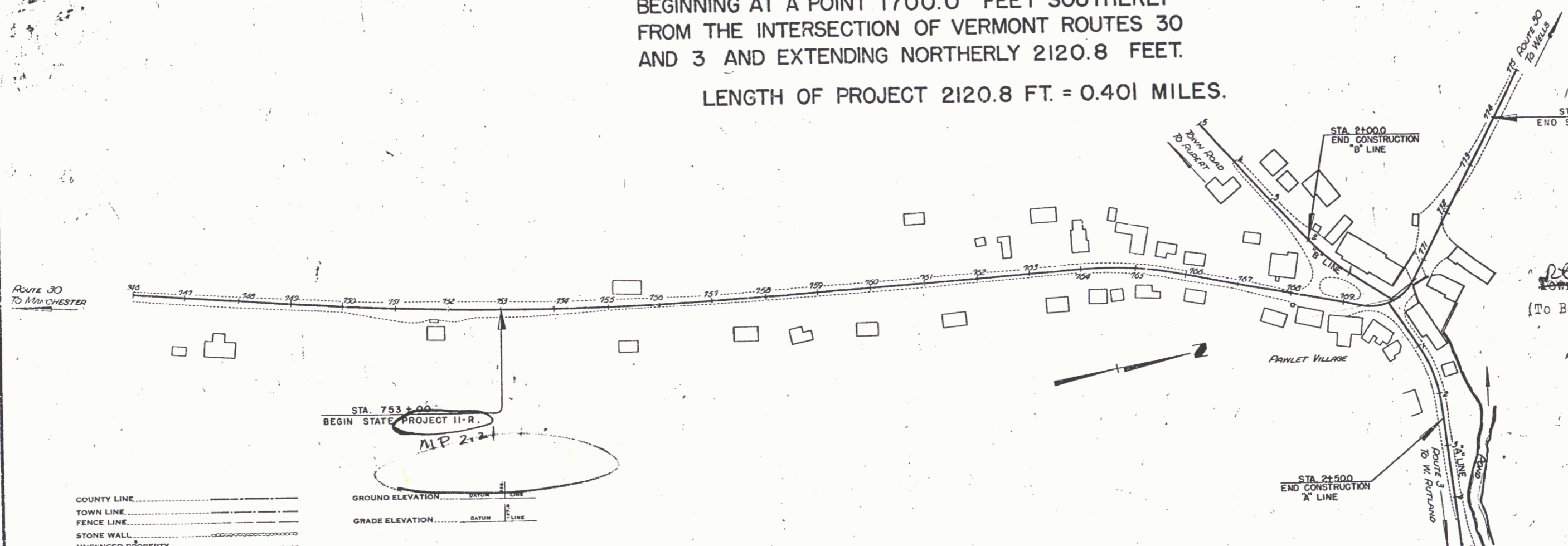
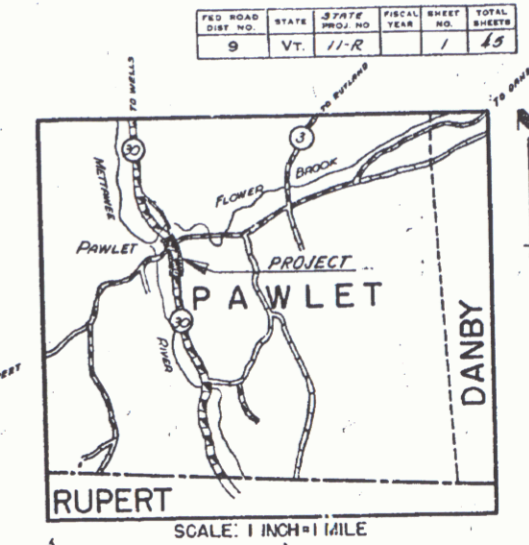
STATE OF VERMONT
 STATE HIGHWAY DEPARTMENT

PLAN AND PROFILE OF PROPOSED
 STATE HIGHWAY

TOWN OF PAWLET
 VERMONT ROUTE 30

BEGINNING AT A POINT 1700.0 FEET SOUTHERLY
 FROM THE INTERSECTION OF VERMONT ROUTES 30
 AND 3 AND EXTENDING NORTHERLY 2120.8 FEET.

LENGTH OF PROJECT 2120.8 FT. = 0.401 MILES.



RIGHT-OF-WAY DIVISION
 TOWN FILE
 PERPETUAL
 Town of VT 30
 (To Be Returned To R.O.W. Division)

APPROVED: *[Signature]*
 COMMISSIONER OF HIGHWAYS
 SUBMITTED BY ORDER OF THE STATE HIGHWAY BOARD

Pin # 00R305

RECOMMENDED FOR APPROVAL
 PUBLIC ROADS ADMINISTRATION
 FEDERAL WORKS AGENCY

- COUNTY LINE
- TOWN LINE
- FENCE WALL
- STONE WALL
- UNFENCED PROPERTY
- GUARD RAIL
- TRAVELED WAY
- RAILROAD
- RETAINING WALL
- CENTER LINE
- SURVEY LINE
- CULVERT
- DROP INLET
- TROLLEY POLE
- POWER POLE
- TELEPHONE POLE
- TREES
- HEDGE

GROUND ELEVATION
 GRADE ELEVATION

CURVE DATA
 DEFLECTION ANGLE
 DEGREE OF CURVE
 RADIUS OF CURVE
 TANGENT DISTANCE
 LENGTH OF CURVE
 EXTERNAL DISTANCE
 POINT OF INTERSECTION
 POINT OF CURVE
 POINT OF TANGENT
 POINT ON TANGENT

SCALES
 TITLE 1" = 100 FT.
 TYPICAL 1" = 2 FT.
 PLAN 1" = 208.50 FT.
 PROFILE HORIZONTAL 1" = 208.50 FT.
 VERTICAL 1" = 8.10 FT.
 CROSS SECTIONS 1" = 5 FT.

THESE PLANS ARE SUBJECT TO SUCH REVISIONS AS MAY BE
 REQUIRED BY THE PUBLIC ROADS ADMINISTRATION OR THE COM-
 MISSIONER OF HIGHWAYS.
 CONSTRUCTION IS TO BE CARRIED ON IN ACCORDANCE WITH
 THE PLANS AND THE STANDARD ROAD AND BRIDGE SPECIFICATIONS
 OF 1936, AS APPROVED DECEMBER 29TH, 1936 BY THE PUBLIC
 ROADS ADMINISTRATION, INCLUDING ALL SUBSEQUENT APPROVED
 REVISIONS AND SUCH REVISED SPECIFICATIONS AND SPECIAL
 PROVISIONS AS ARE SUBMITTED WITH THE PLANS.

APPROVED: *[Signature]* ROAD ENGINEER
 APPROVED: *[Signature]* DISTRICT HIGHWAY COMMISSIONER
 SERIES ST No. 11-R FILED
 SHEET 1 OF 45