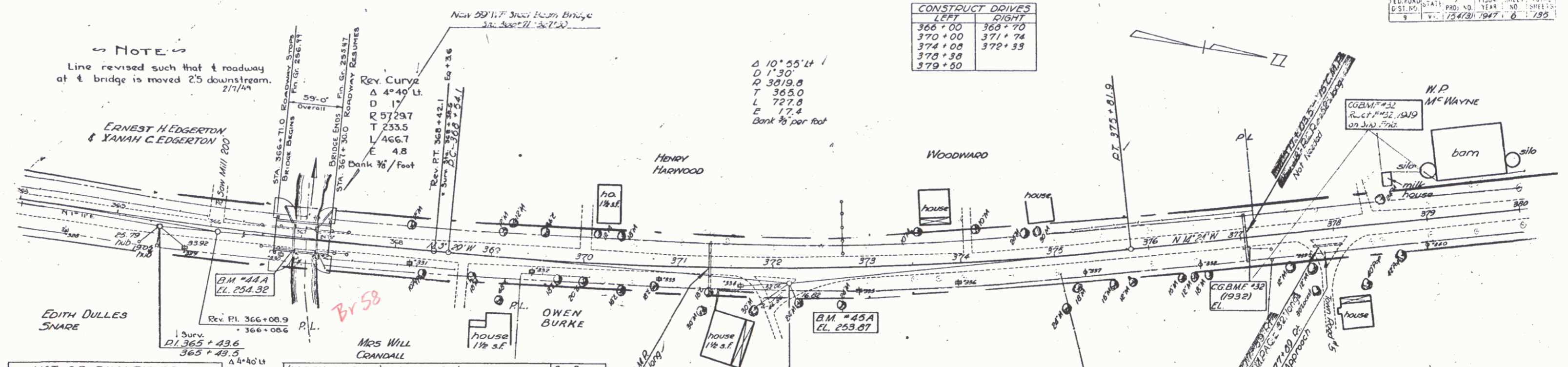


NOTE
 Line revised such that roadway at bridge is moved 2.5 downstream. 2/1/49

CONSTRUCT DIVES

LEFT	RIGHT
366+00	366+70
370+00	371+74
374+08	372+33
378+38	
379+80	



LIST OF QUANTITIES

ITEM	DESCRIPTION	REVISED QUANTITY	UNIT
157	CHANNEL EXCAVATION	20.00	CY
16	STRUCTURE	1.00	LS
18	MAINTENANCE OF TRAFFIC	1.00	LS
31A	CONCRETE, CLASS A	21.60	CY
41C	REINFORCING STEEL	874.08	LB
69	STONE FILL	20.00	CY
81	REMOVING SUPERSTRUCTURE ON WIDENING	1.00	LS
83B	STEEL SUPERSTRUCTURE	56,788.00	LB
180	TRAMP. BLDG. & TRAIL	1.00	LS
181	SUB. BASE FOR BRIDGE	10,213.80	CU YD

(WIDENING ONLY) BRIDGE #1 DATA

TYPE	PRESENT	PROPOSED	WF Beam
OVERALL SPAN ON E. OF ROAD	24'-6"	24'-6"	59'-0"
ROADWAY FACE TO FACE OF CURB	20'-0"	30'-0"	30'-0"
CLEAR SPAN ON E. OF ROAD	21'-6"	21'-6"	55'-0"
CLEAR SPAN NORMAL TO STREAM	21'-0"	21'-0"	55'-0"
CLEAR HEIGHT TO LOW BRIDGE SEAT	9'-7"	9'-7"	9'-7"
MAX HIGH WATER ELEV.	251.00	251.00	251.00
NORMAL HIGH WATER ELEV.	248.40	248.40	248.40
WATERWAY TO LOW BRIDGE SEAT	200'-0"	200'-0"	343
TO MAX. H.W. ELEV.	100'-0"	180'-0"	343
TO NORMAL H.W. ELEV.	128'-0"	128'-0"	234
STREAM VELOCITY	MEDIUM	MEDIUM	MEDIUM
DRIFT	LIGHT	LIGHT	LIGHT
SCOUR	MEDIUM	MEDIUM	MEDIUM

- LIST OF BRIDGE SHEETS**
- SHEET 46 OF 135 - DETAILS OF ABUTMENT #1
 - 47 - 135 - SUPERSTRUCTURE
 - 48 - 135 - SB-SC-1 DETAIL OF CABLE RAIL
 - 49 - 135 - 135 SB-11 BARRICADES, SIGNS & LIGHTS
 - 50 - 135 SB-20 DETAIL OF K, J, L
 - 46A - DETAILS OF ABUTS. #1 & 2
 - 47A - 31B 30 H20 Superstructure. (No Sidewalk) (59'-0 SPAN)

CONSTRUCTED DIVES

RT	LT
367+70	366+70
371+75	370+70
372+33	371+33
377+55	376+55

