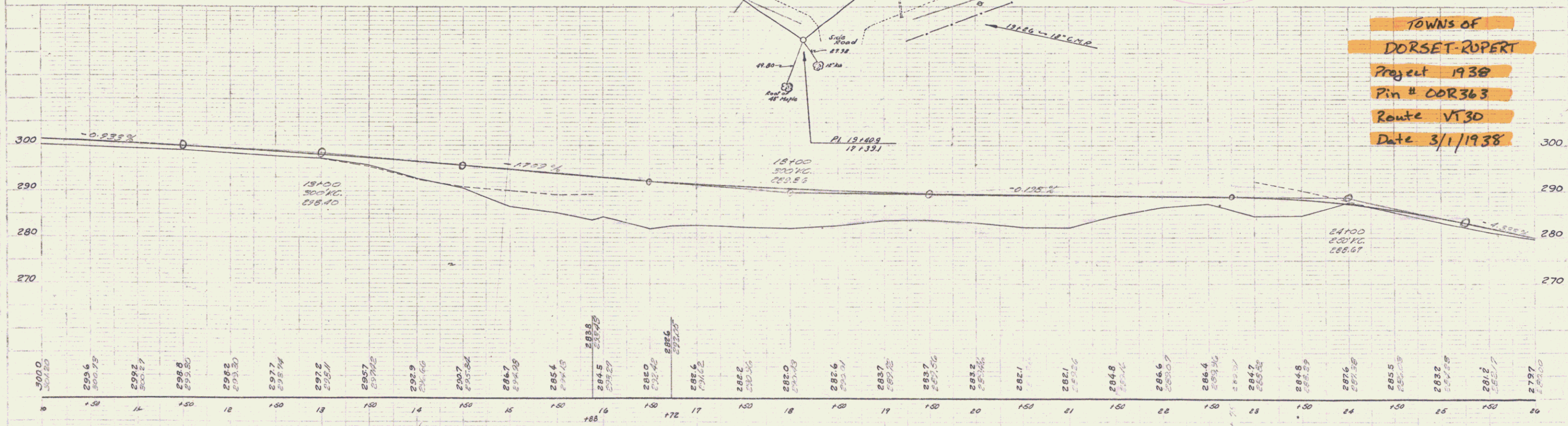


MP Dorset 437-523  
Rupert 0.00-0.45

RIGHT-OF-WAY DIVISION  
TOWN FILE  
PERPETUAL

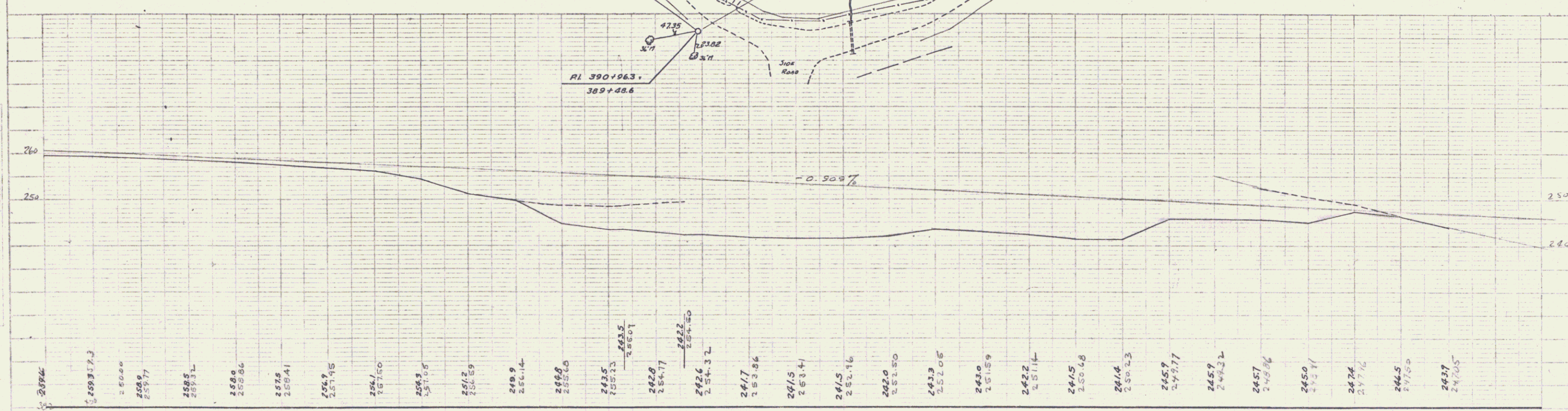
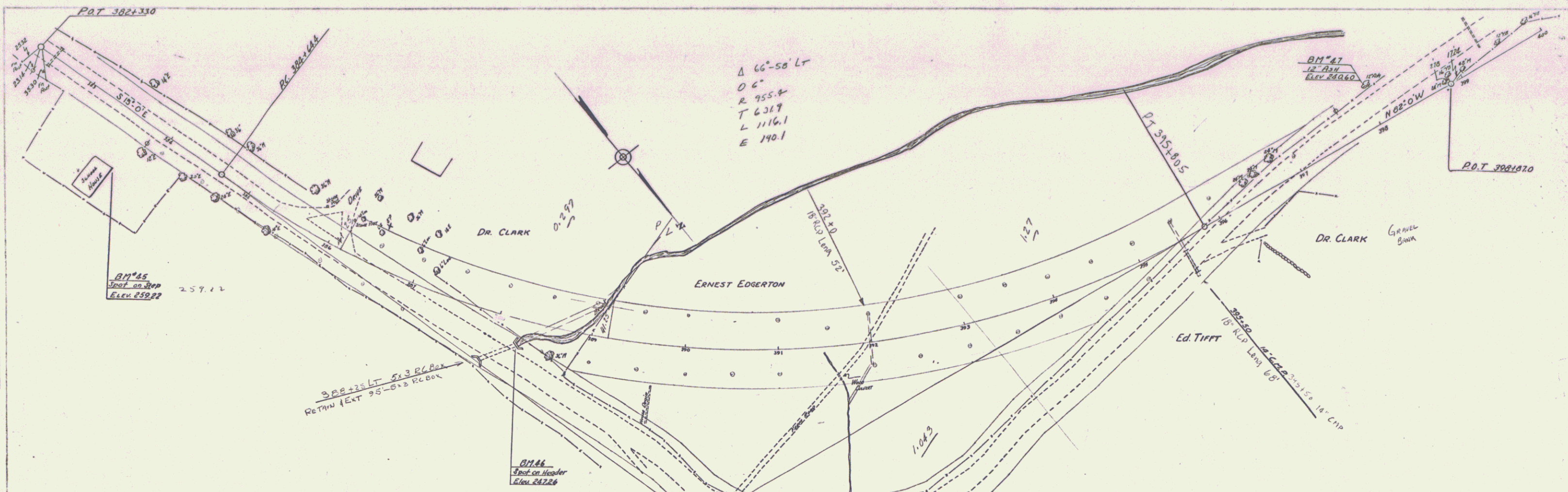
Rte VT 30  
To Be Returned To R.O.W. Division

TOWNS OF  
DORSET-RUPERT  
Project 1938  
Pin # COR363  
Route VT30  
Date 3/1/1938



B.M.#1 SPOT ON 2000' WIDE 12" WIDE DIRT ROAD  
B.M.#2 SPOT ON CURB HEAD 3.5' BT 151.50' CIVIL 288.40  
B.M.#3 SPINE IN IRON 24" DIA 12" LT 151.75' CIVIL 288.45

DORSET  
Sheet 1 of 1

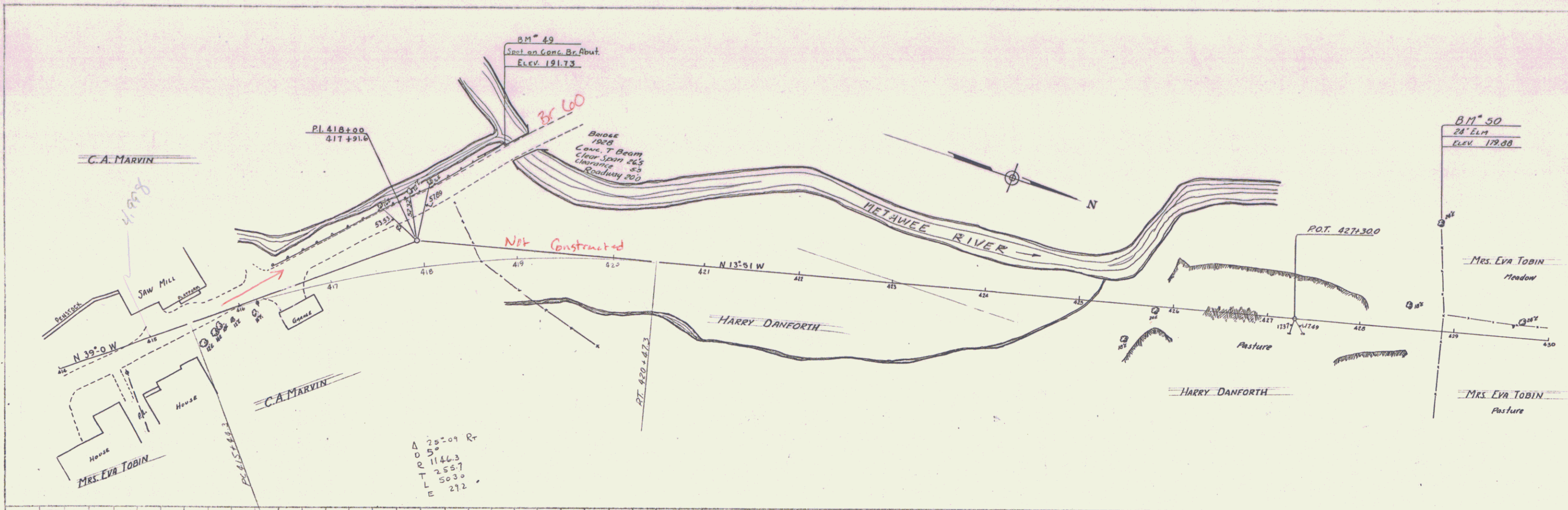


382	259.773	383	259.22	384	247.26	385	240.60	386		387		388		389		390		391		392		393		394		395		396		397
BM*45	Spot on School House Steps	60' Lt. Sta. 383+65	ELEV. 259.22	BM*44	Spot on Culvert Header	33' Pt. Sta. 388+25	ELEV. 247.26	BM*47	Spike in Trunk 12" Ash	40' Lt. Sta. 398+05	ELEV. 240.60																			

4172  
 4173  
 4174  
 4175  
 4176  
 4177  
 4178  
 4179  
 4180  
 4181  
 4182  
 4183  
 4184  
 4185  
 4186  
 4187  
 4188  
 4189  
 4190  
 4191  
 4192  
 4193  
 4194  
 4195  
 4196  
 4197  
 4198  
 4199  
 4200



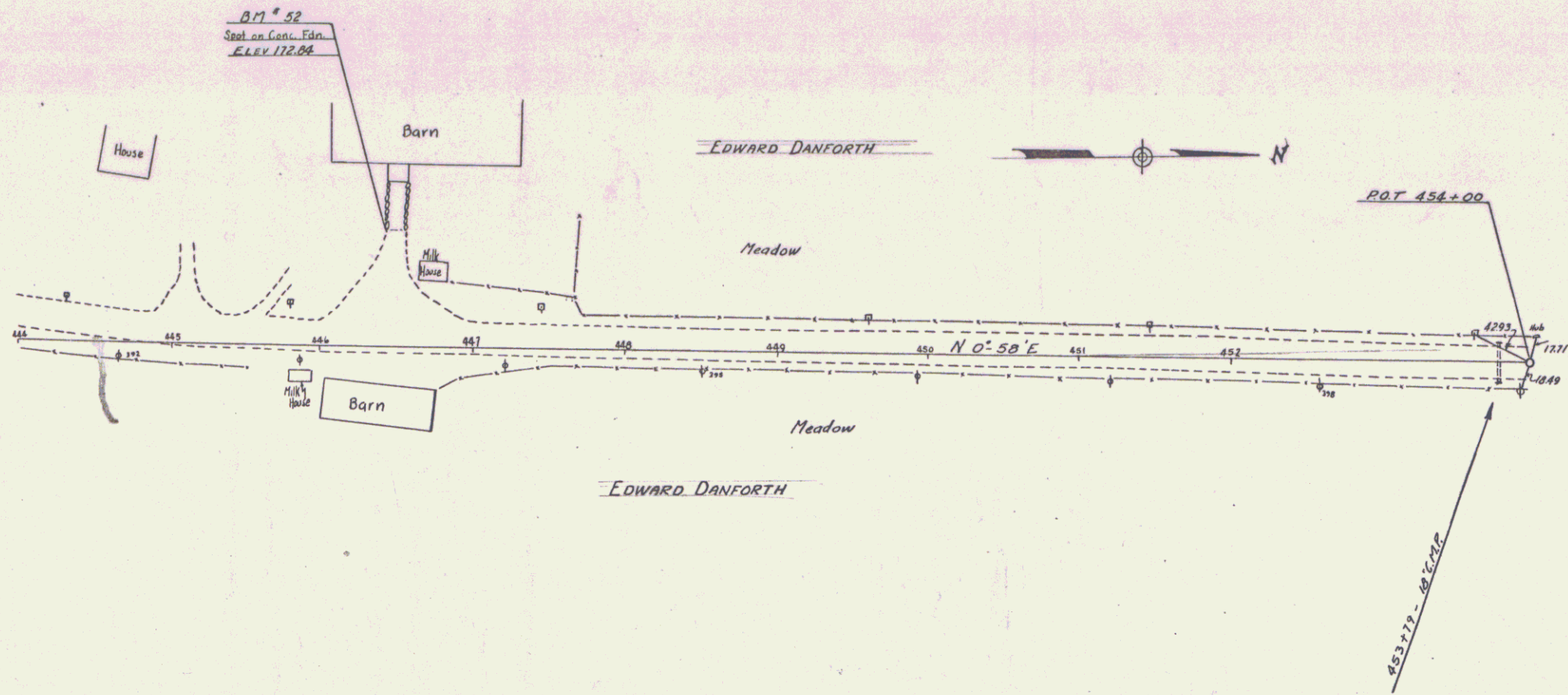
PLM  
 DATE  
 BY  
 CHECKED  
 APPROVED



BM 49 Spot on Conc. Bridge Abut. 122 Lt. Sta. 417+90 Elev. 191.73  
 BM 50 Spike in Root 20 Elm 1125 Lt. Sta. 428+77 Elev. 179.88



Survey  
Station  
No. 52  
Elev. 172.86



BM 52 Spot on Concrete Foundation 79' Lx Str. 446+44 Elev 172.86

SHEET 5

6