

INDEX OF SHEETS

SHEET NO. 1	TITLE PAGE	
" 2-24	TYPICAL CROSS-SECTION OF IMPROVEMENT	2 1/2" CRUSHED GRAVEL MIXED-IN-PLACE SURFACE COURSE WITH CUT-BACK ASPHALT
" 3	BANKING AND WIDENING TABLES	4" PRIME COAT OF REFINED TAR (ITEMS 26-30 #31)
" 4-12	PLAN AND PROFILE STA.	
" 13	STANDARD STRUCTURE SHEET	3-20 PIPE CULVERTS
" 14	"	3-30 GUARD RAIL
" 15	"	3-30A CATCH BASIN
" 16	"	3-31 BOUNDARY MARKERS
" 17	"	3-40 BARRICADES, ETC
" 18	"	3-41 ROUNDED SLOPES
" 19-41	CROSS SECTIONS	

STANDARD STRUCTURE SHEETS APPROVED BY CHIEF ENGINEER
 330 JULY 24, 1933
 330 AUG 15, 1933
 3-31 JULY 23, 1934

STATE OF VERMONT
 STATE HIGHWAY DEPARTMENT

PLAN AND PROFILE OF PROPOSED
 STATE HIGHWAY

FEDERAL AID PROJECT
 SECONDARY

TOWN OF DORSET

MANCHESTER-DORSET ROAD

BEGINNING AT A POINT 2.103 MI. FROM THE DORSET-MANCHESTER TOWN LINE & EXTENDING N. WESTERLY 1.444 MI. TO A POINT 0.149 MI. NORTH WESTERLY OF THE INTERSECTION OF ROUTE 30 WITH THE E. RUPERT ROAD IN DORSET VILLAGE.

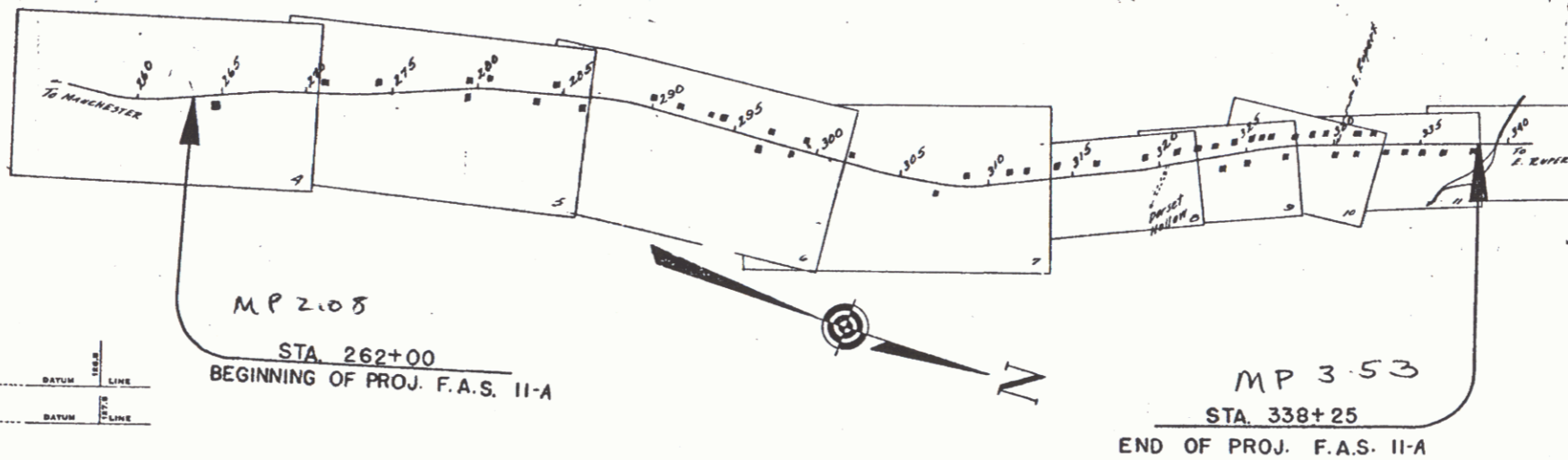
Route Vt 30
 Project FAS 11A
 Pin 00R362
 Date 09/20/1937

FED. ROAD DIST. NO.	STATE	F. A. D. PROJ. NO.	TYPICAL SHEET NO.	TOTAL SHEETS
9	VT.	11-A	1	41



Scale: 1 inch = 1 Mile

LENGTH OF PROJECT 7624.7 FT. = 1.444 MI.



RIGHT-OF-WAY DIVISION
 TOWN FILE
 PERPETUAL
 Town of Vt 30
 (To Be Returned To R.O.W. Division)

RECORD PLANS

APPROVED: *[Signature]*
 COMMISSIONER OF HIGHWAYS
 SUBMITTED BY ORDER OF THE STATE HIGHWAY BOARD

NOTE: ALL FURTHER REVISIONS TO THESE PLANS MUST BE MADE IN ACCORDANCE WITH THE RULES AND REGULATIONS OF THE BUREAU OF PUBLIC ROADS.

CONVENTIONAL SIGNS

COUNTY LINE	GROUND ELEVATION	RAILROAD
TOWN LINE	FENCE LINE	UNFENCED PROPERTY
STONE WALL	GUARD RAIL	TRAVELED WAY
RAILROAD	RETAINING WALL	CENTER LINE
CULVERT	DROP INLET	TROLLEY POLE
POWER POLE	TELEPHONE POLE	TREES
HEDGE		

CURVE DATA

DEFLECTION ANGLE	D
DEGREE OF CURVE	D
RADIUS OF CURVE	R
TANGENT DISTANCE	T
LENGTH OF CURVE	L
EXTERNAL DISTANCE	E
POINT OF INTERSECTION	P. I.
POINT OF CURVE	P. C.
POINT OF TANGENT	P. T.
POINT ON TANGENT	P. O. T.

SCALES

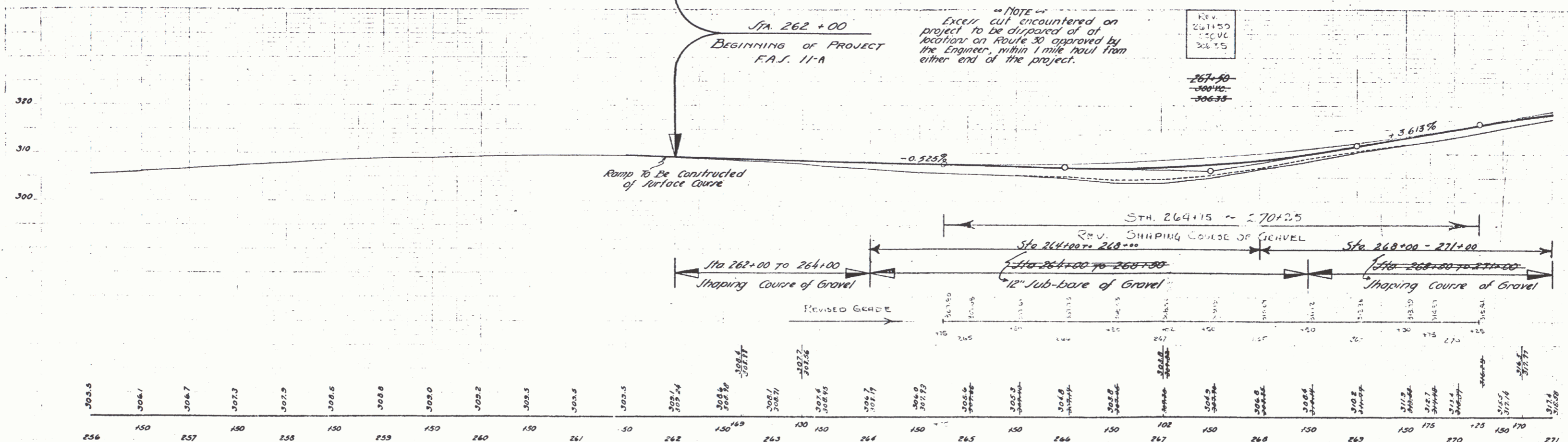
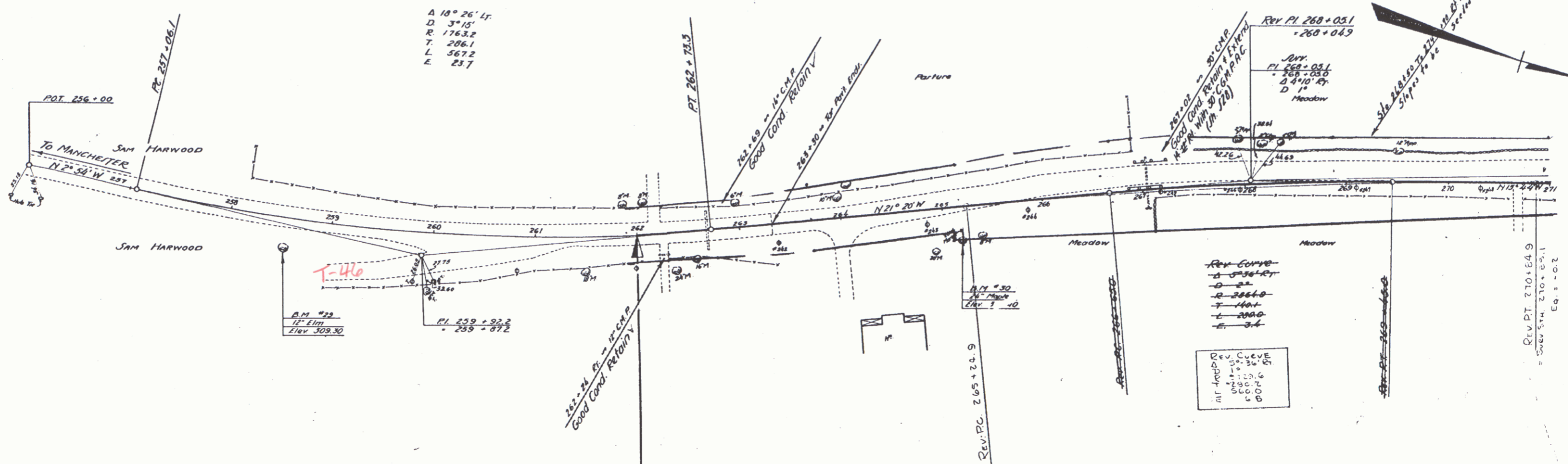
TITLE	1" = 500'
TYPICAL	1" = 2'
PLAN	1" = 50'-20'
PROFILE	1" = 10'
CROSS SECTIONS	1" = 3'

DORSET - F.A.S. - 11-A
 BY HARVEY J. SON
 RECORD PLANS BY R. P. [Signature]

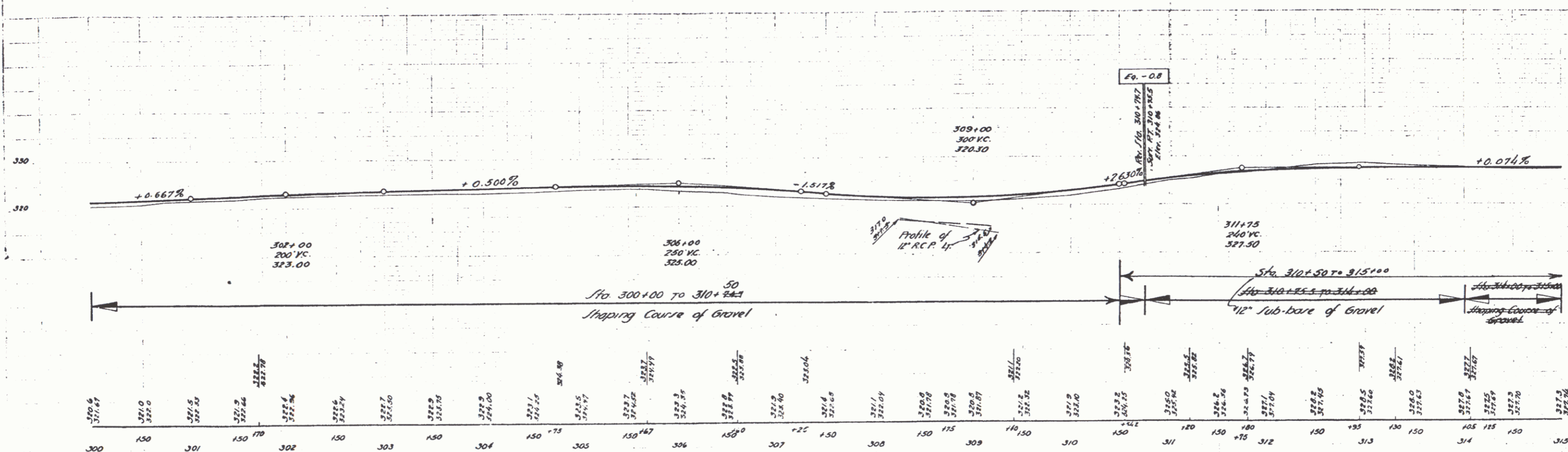
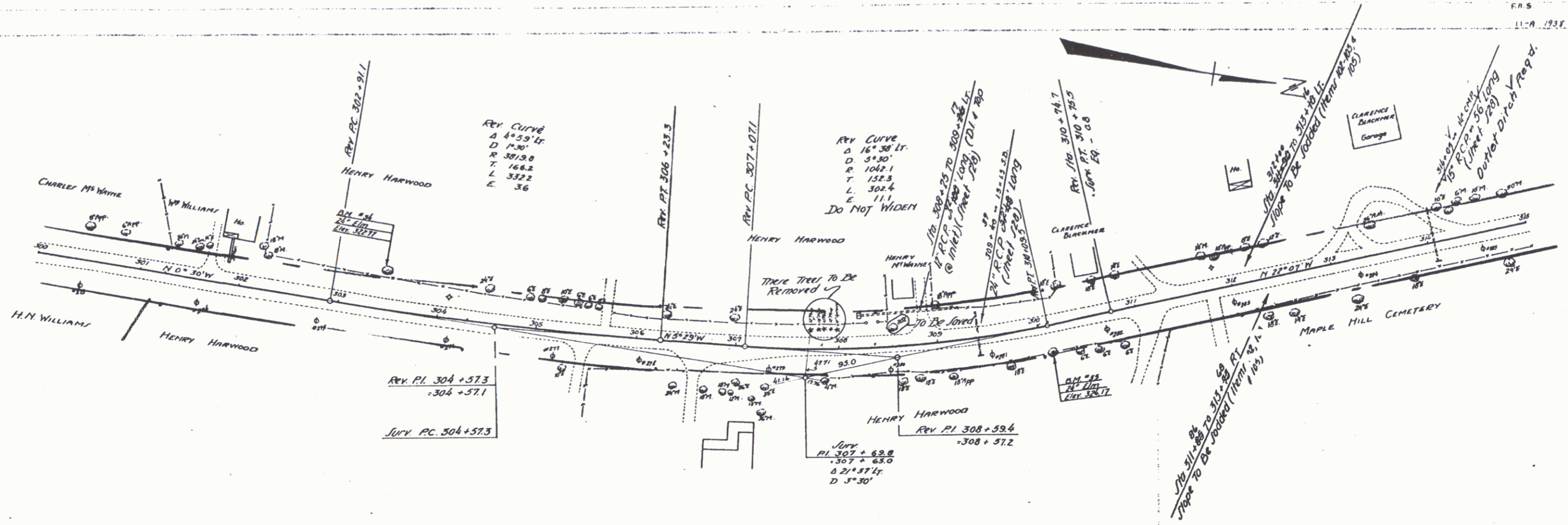
These plans are subject to such revisions as may be required by the Bureau of Public Roads or the Commissioner of Highways. Construction is to be carried on in accordance with the plans and standard road & bridge specifications as approved Dec. 29, 1936 by the Bureau of Public Roads including all subsequent approved revisions and such revised specifications and special provisions as are submitted with the plans.

RECOMMENDED [Signature]
 DISTRICT ENGINEER BUREAU OF PUBLIC ROADS
 RECOMMENDED FOR APPROVAL [Signature]
 CHIEF ENGINEER BUREAU OF PUBLIC ROADS
 APPROVED [Signature]
 DIRECTOR - BUREAU OF PUBLIC ROADS

APPROVED	DATE	CHECKED	DATE	SERIES F.A.S. NO.	FILED
[Signature]	Sept 18, 1937	[Signature]	Sept 29, 1937	11-A	1 OF 41



BM #29 Spike in root of 12' Elm 215' Rt. of Sta 230+36 Elev 309.30
 BM #30 Spike in root of 24' Maple 30' Rt. of Sta 265+15 Elev 309.40



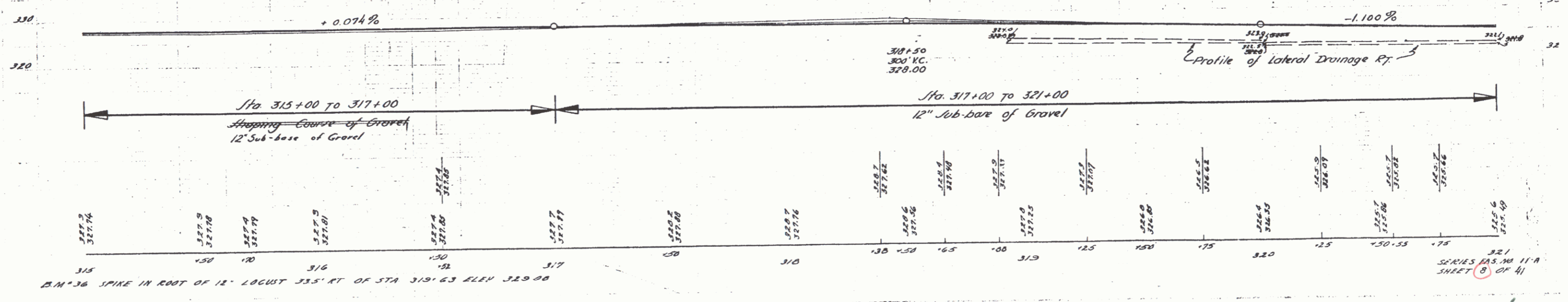
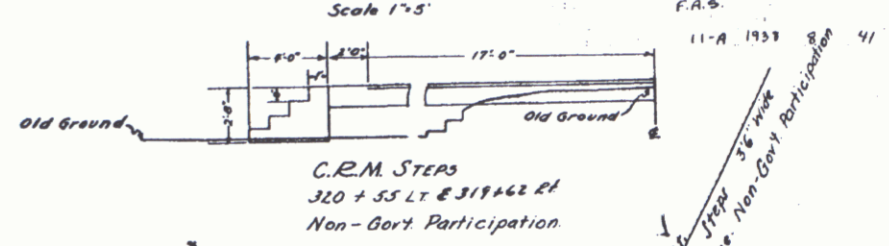
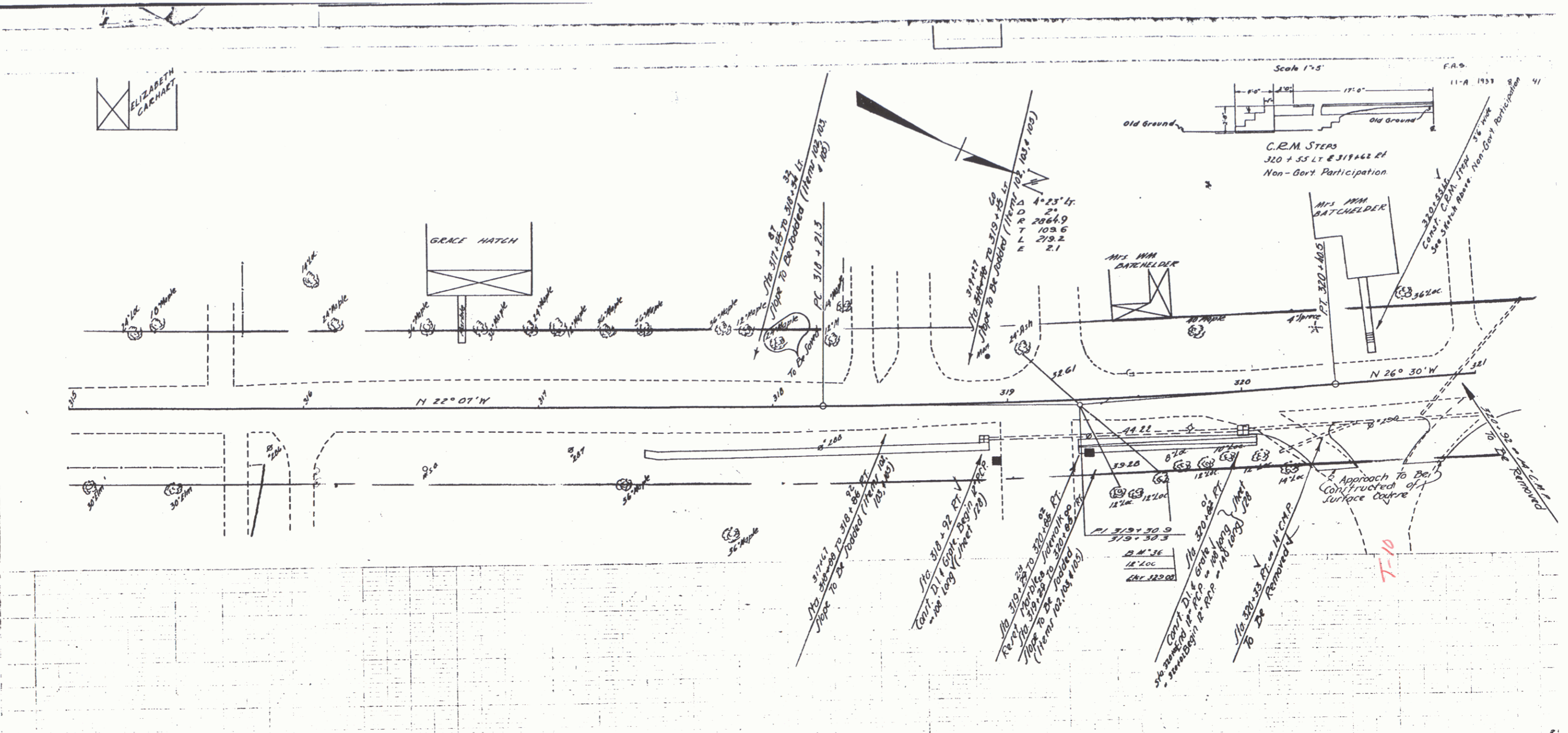
BM # 34 Spike in root of 24' Elm 35' Lt. of Sta. 303+42 Elev. 322.77
 B.M. # 35 Spike in root of 24' Elm 25' Rt. of Sta. 310+10 Elev. 324.17

Sheet F.S. 11-A
 Sheet 7 of 41

ELIZABETH
CARNHAET

F.S. BARRETT 017
R.J. BALLEW 017

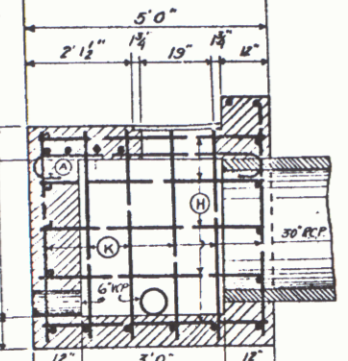
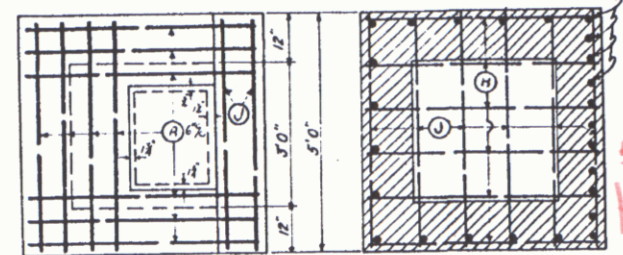
F.S. BARRETT 017
R.J. BALLEW 017



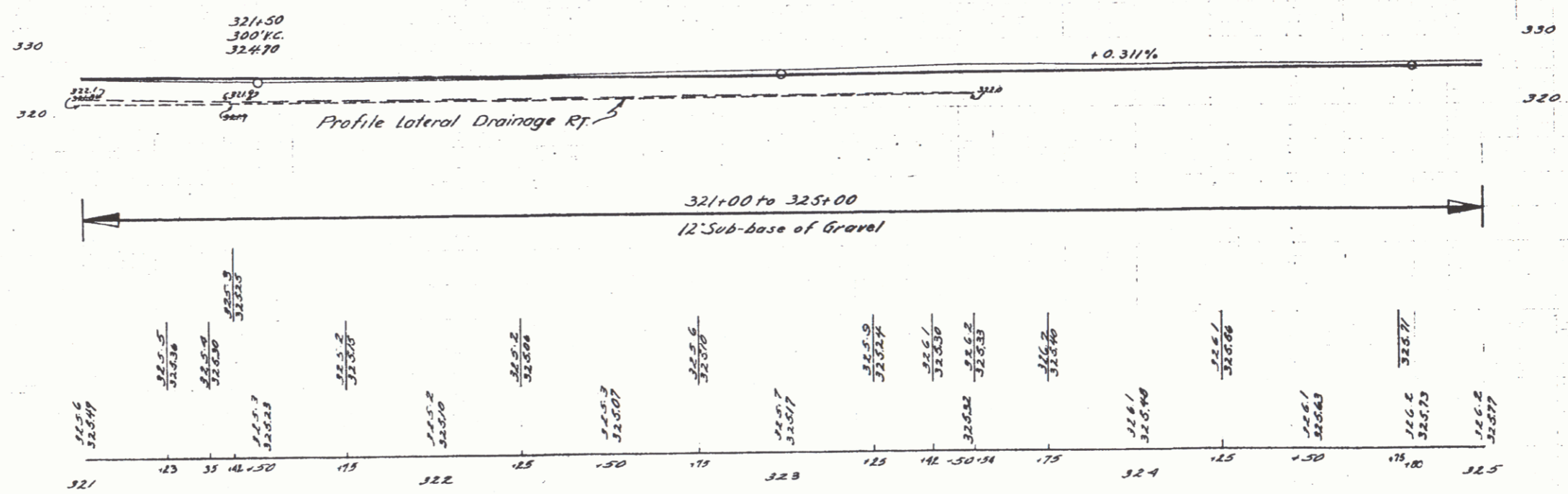
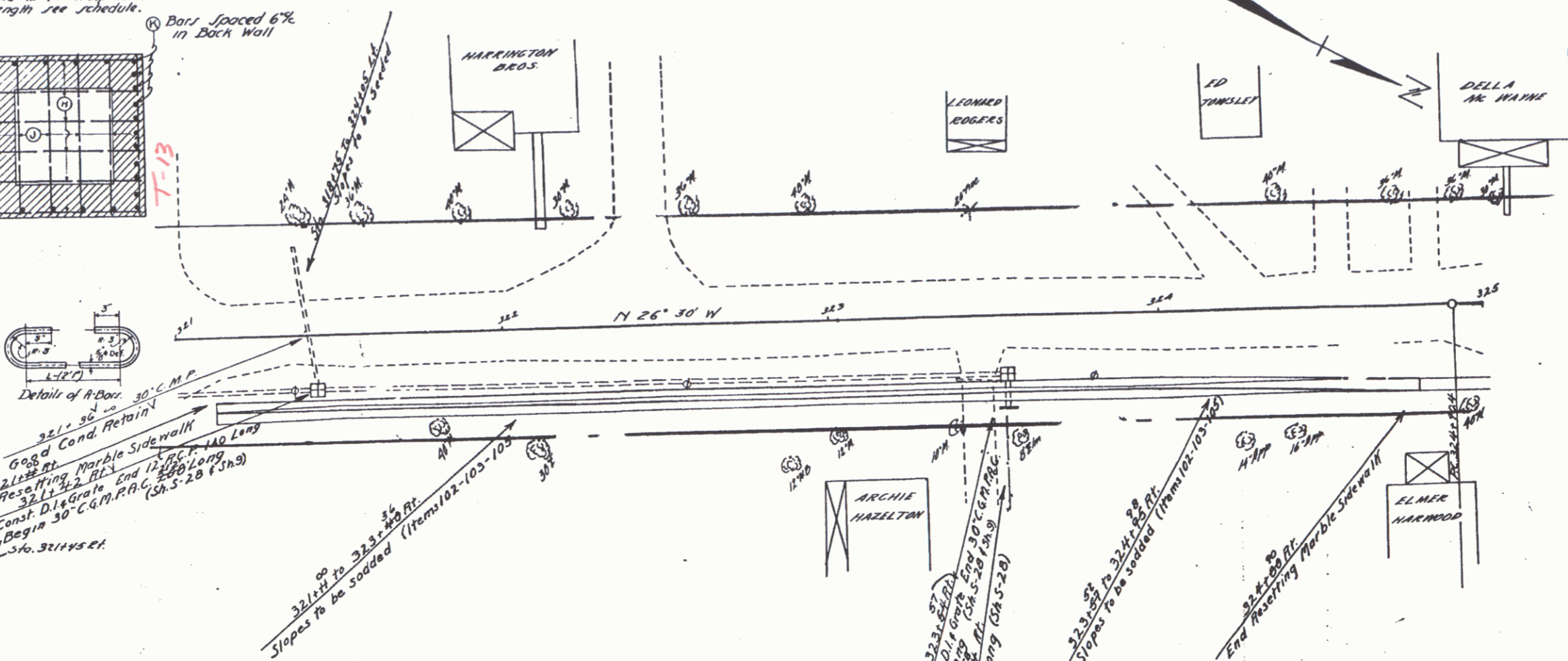
B.M. #36 SPIKE IN ROOT OF 12" LOCUST 335' RT. OF STA 319+63 ELEV. 329.08

SERIES PAS. NO. 11-A
SHEET (8) OF 41

All reinforcing bars spaced 12" @ except as shown or noted. For size and length see schedule.

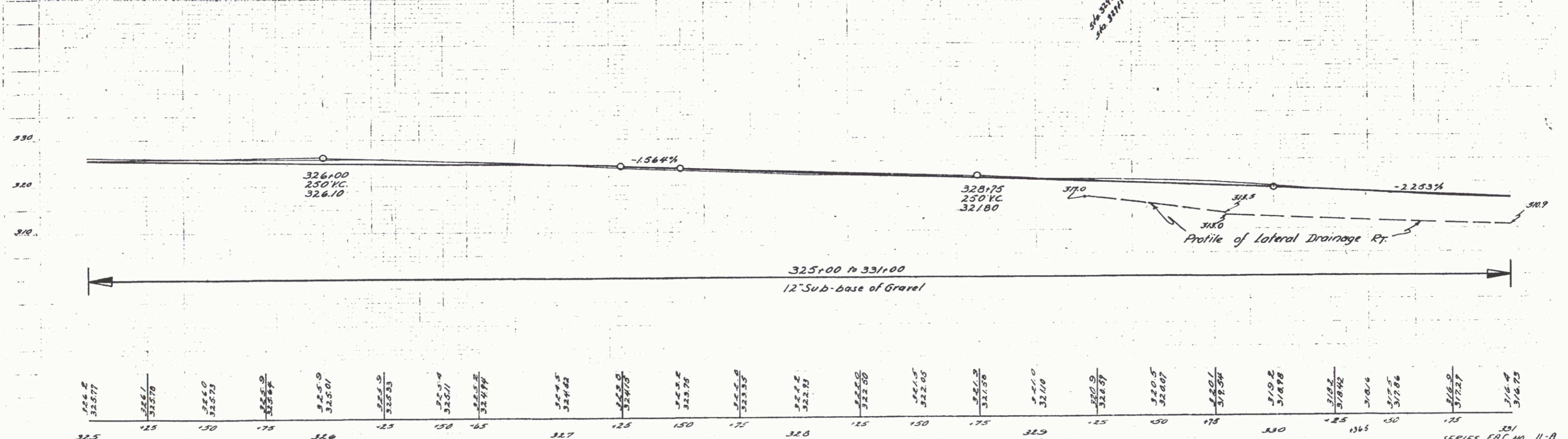
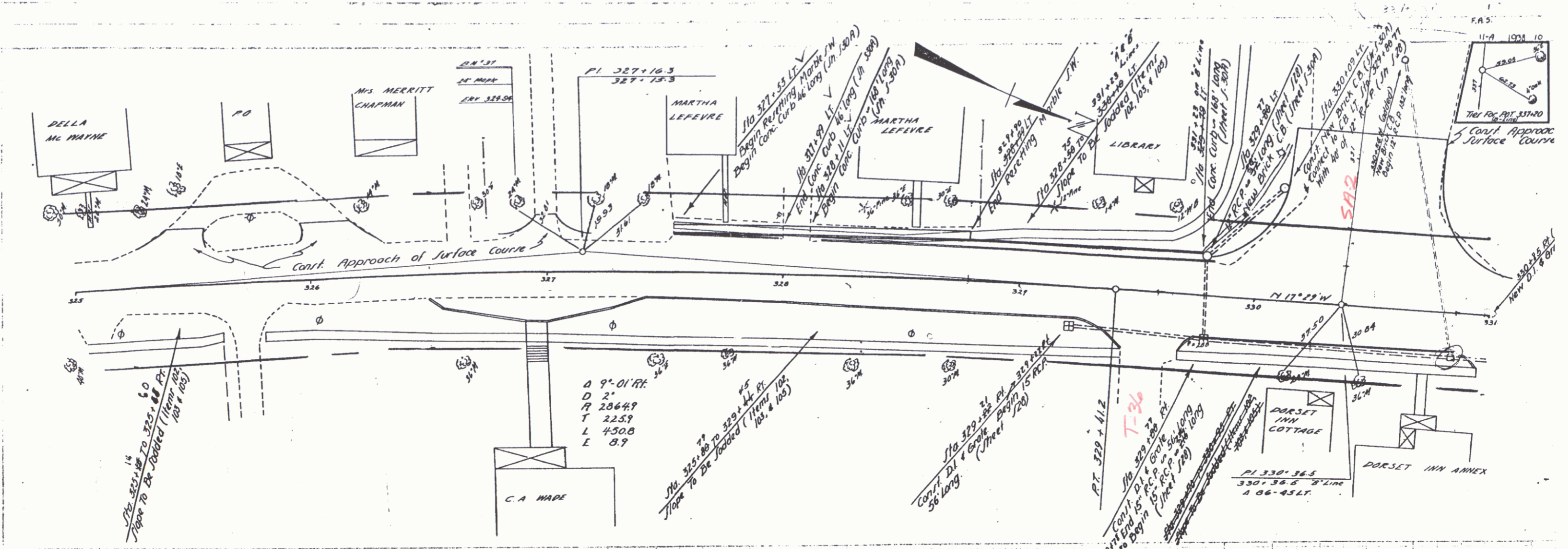


Bar	in	Dia	Spch	Qty	Bar	in	Dia	Spch	Qty	
A	10	3/8"	7'3"	76	A	10	3/8"	7'3"	76	
V	14	3/8"	4'9"	79	V	14	3/8"	4'9"	79	
H	14	3/8"	4'9"	69	H	14	3/8"	4'9"	69	
K	14	3/8"	4'3"	62	K	14	3/8"	4'9"	69	
X	11	3/8"	5'0"	57	K	11	3/8"	5'6"	63	
					393					
					376					



C.S. BARRETT
P.U. BAILEY 0137

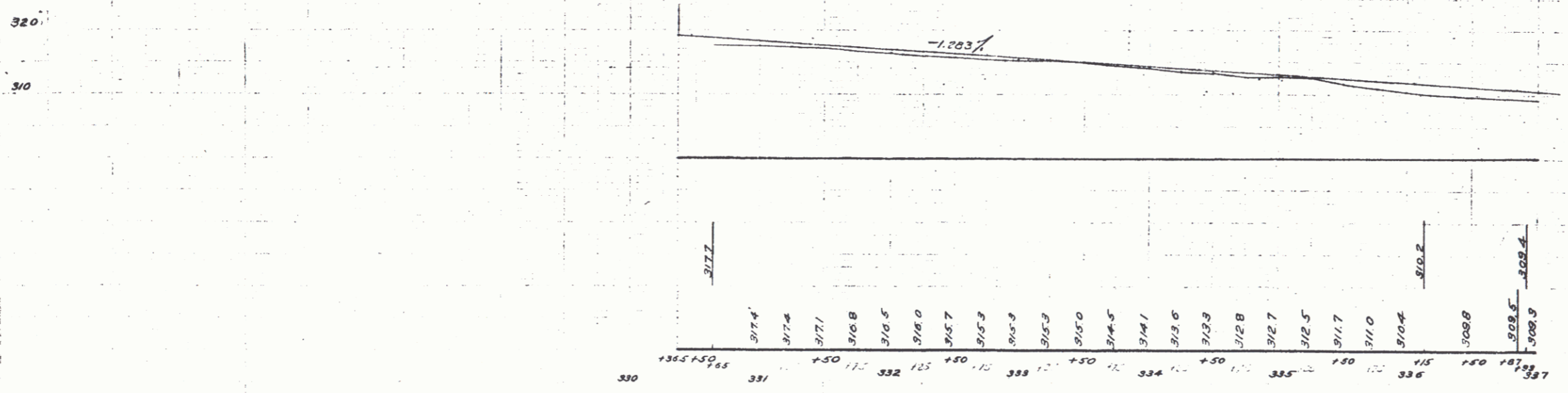
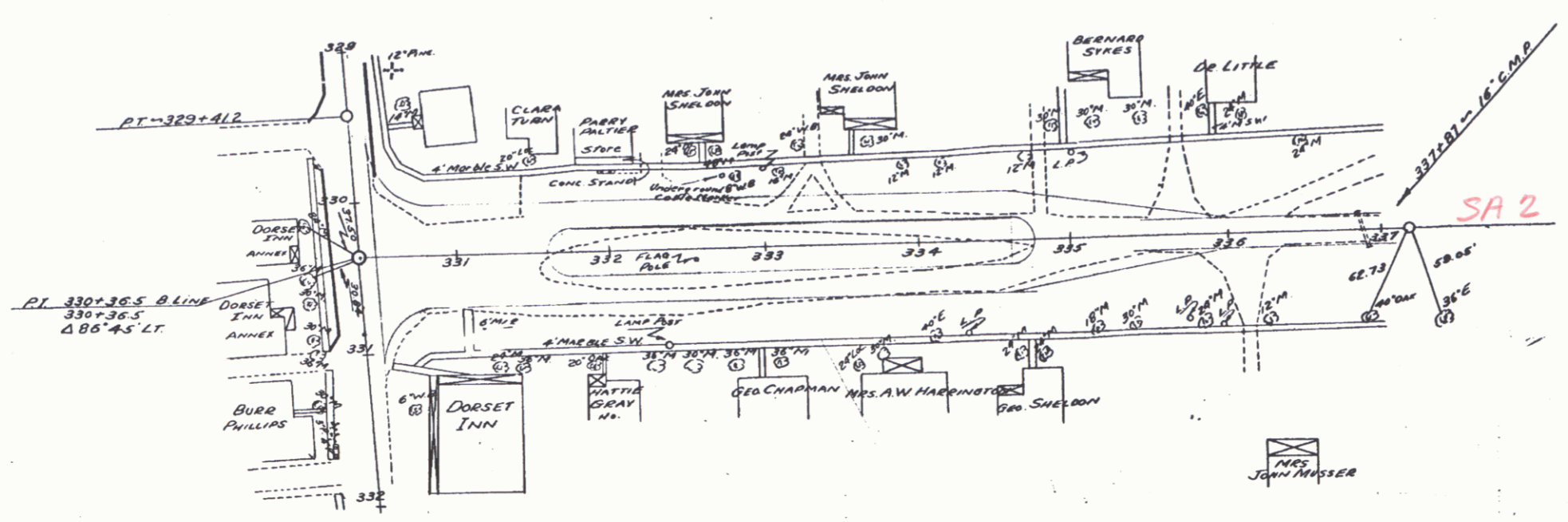
C.S. BARRETT
P.U. BAILEY 0137

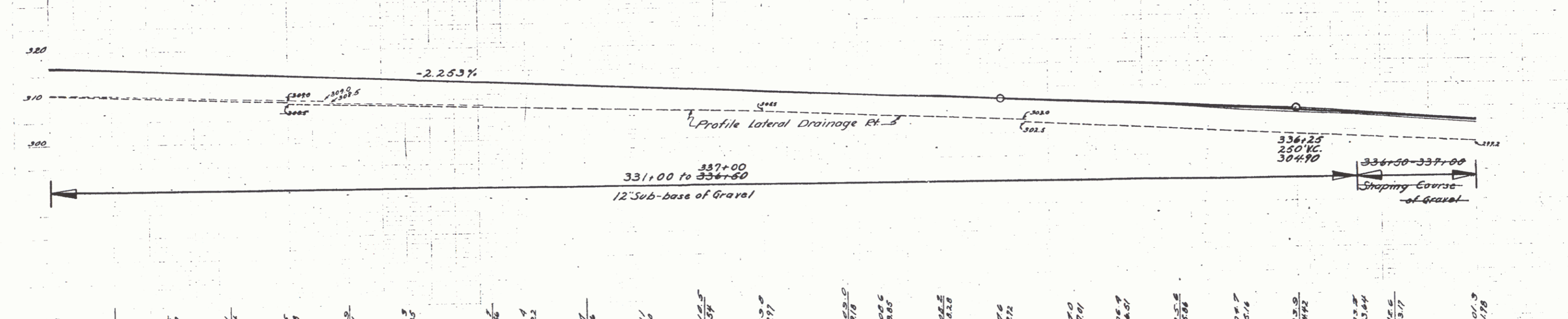
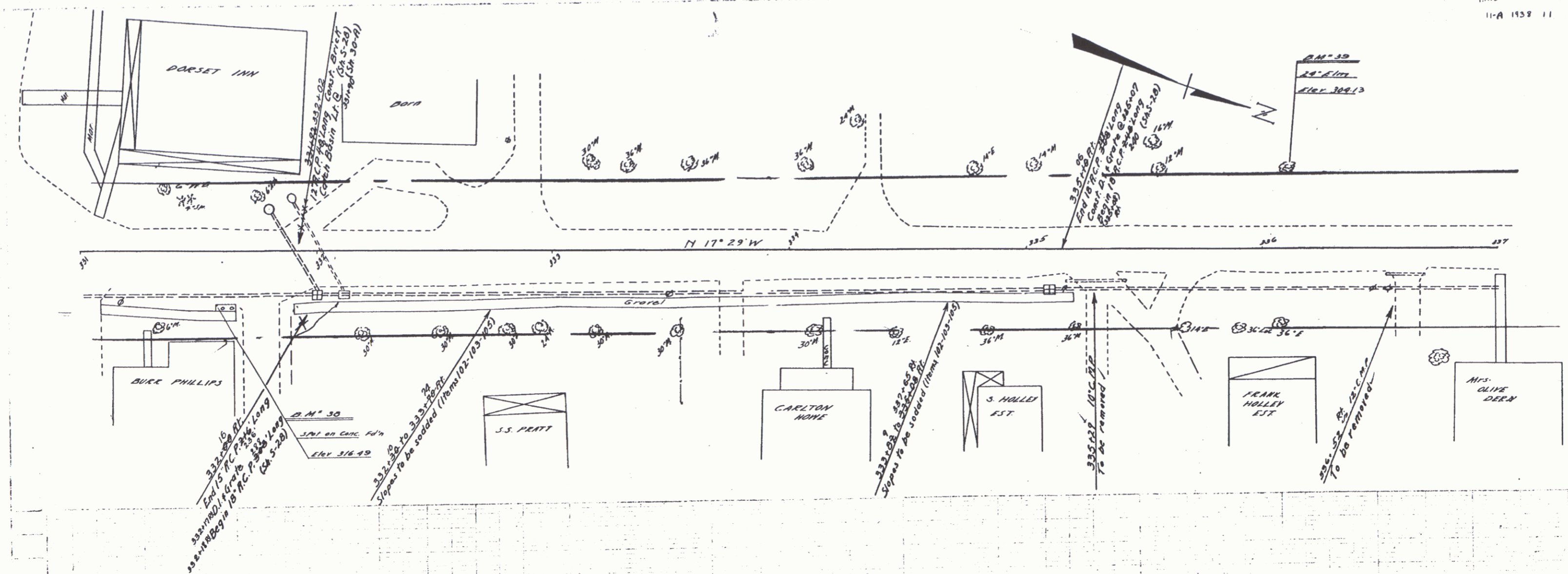


14" SPIKE IN ROOT OF 24" MAPLE 275' LT. OF STA. 326+00 ELEV. 324.94

SERIES ERT. NO. 11-A
SHEET 10 OF 41

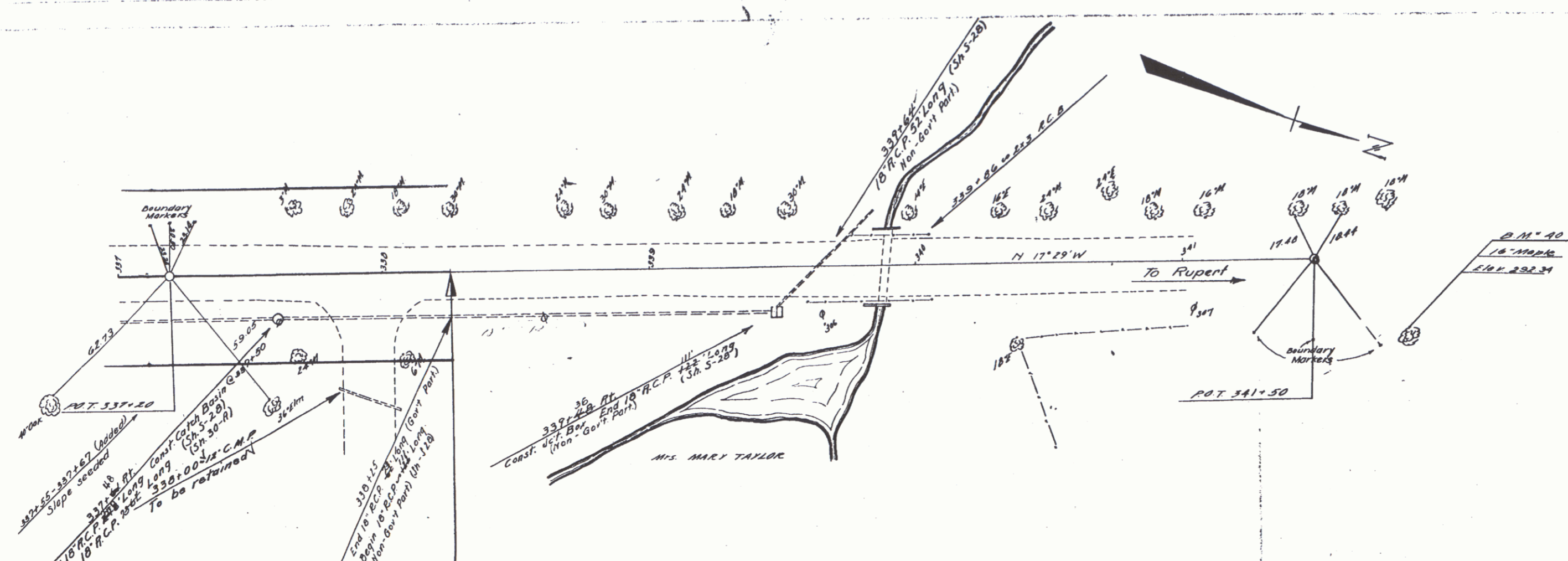
80





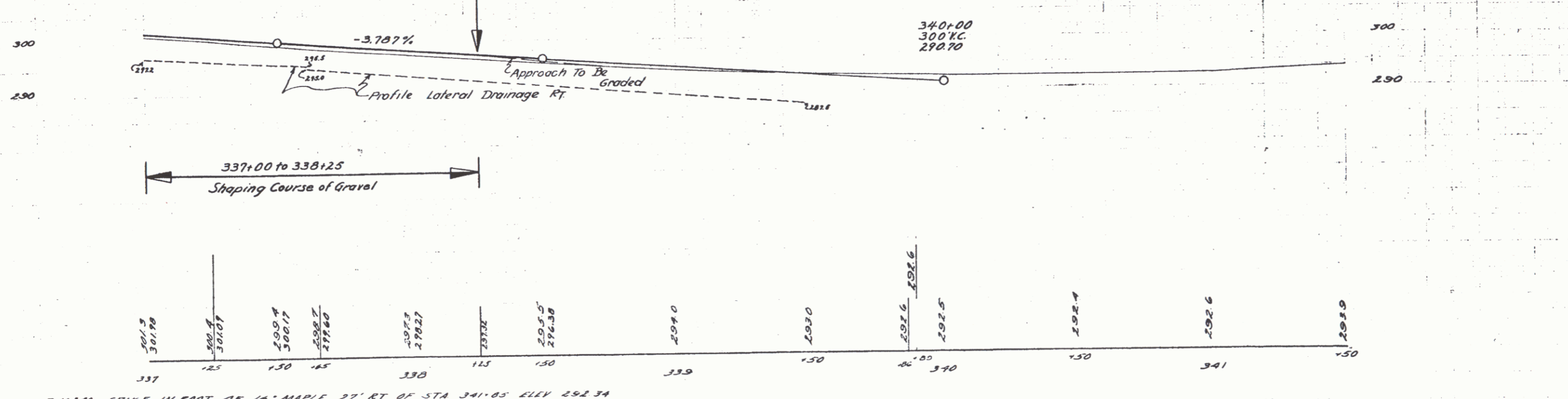
316.73	316.71	316.60	316.44	316.44	316.29	316.13	316.05	315.86	315.71	315.56	315.41	315.22	315.11	315.00	314.85	314.70	314.55	314.40	314.25	314.10	313.95	313.80	313.65	313.50	313.35	313.20	313.05	312.90	312.75	312.60	312.45	312.30	312.15	312.00	311.85	311.70	311.55	311.40	311.25	311.10	310.95	310.80	310.65	310.50	310.35	310.20	310.05	309.90	309.75	309.60	309.45	309.30	309.15	309.00	308.85	308.70	308.55	308.40	308.25	308.10	307.95	307.80	307.65	307.50	307.35	307.20	307.05	306.90	306.75	306.60	306.45	306.30	306.15	306.00	305.85	305.70	305.55	305.40	305.25	305.10	304.95	304.80	304.65	304.50	304.35	304.20	304.05	303.90	303.75	303.60	303.45	303.30	303.15	303.00	302.85	302.70	302.55	302.40	302.25	302.10	301.95	301.80	301.65	301.50	301.35	301.20	301.05	300.90	300.75	300.60	300.45	300.30	300.15	300.00	299.85	299.70	299.55	299.40	299.25	299.10	298.95	298.80	298.65	298.50	298.35	298.20	298.05	297.90	297.75	297.60	297.45	297.30	297.15	297.00	296.85	296.70	296.55	296.40	296.25	296.10	295.95	295.80	295.65	295.50	295.35	295.20	295.05	294.90	294.75	294.60	294.45	294.30	294.15	294.00	293.85	293.70	293.55	293.40	293.25	293.10	292.95	292.80	292.65	292.50	292.35	292.20	292.05	291.90	291.75	291.60	291.45	291.30	291.15	291.00	290.85	290.70	290.55	290.40	290.25	290.10	290.00
--------	--------	--------	--------	--------	--------	--------	--------	--------	--------	--------	--------	--------	--------	--------	--------	--------	--------	--------	--------	--------	--------	--------	--------	--------	--------	--------	--------	--------	--------	--------	--------	--------	--------	--------	--------	--------	--------	--------	--------	--------	--------	--------	--------	--------	--------	--------	--------	--------	--------	--------	--------	--------	--------	--------	--------	--------	--------	--------	--------	--------	--------	--------	--------	--------	--------	--------	--------	--------	--------	--------	--------	--------	--------	--------	--------	--------	--------	--------	--------	--------	--------	--------	--------	--------	--------	--------	--------	--------	--------	--------	--------	--------	--------	--------	--------	--------	--------	--------	--------	--------	--------	--------	--------	--------	--------	--------	--------	--------	--------	--------	--------	--------	--------	--------	--------	--------	--------	--------	--------	--------	--------	--------	--------	--------	--------	--------	--------	--------	--------	--------	--------	--------	--------	--------	--------	--------	--------	--------	--------	--------	--------	--------	--------	--------	--------	--------	--------	--------	--------	--------	--------	--------	--------	--------	--------	--------	--------	--------	--------	--------	--------	--------	--------	--------	--------	--------	--------	--------	--------	--------	--------	--------	--------	--------	--------	--------	--------	--------	--------	--------	--------

331 B.M. 30 SPIT ON CONCRETE PDN 23 FT. OF STA. 331+57 ELEV. 316.49
 B.M. 39 SPIKE IN ROOT OF 24' ELM. 31.5' LT. OF STA. 336+14 ELEV. 308.13



STA. 338+25
END OF PROJECT
F.A.S. 11-A
MP 3.53

NOTE:
DRAINAGE 338+25 - 339+64
NON-GOVT. PARTICIPATION



B.M. 40 SPIKE IN ROOT OF 18" MAPLE 27' RT OF STA 341+05 ELEV 292.34