

EXCAVATION & REMOVAL of ROAD SURFACE and PAVEMENT ITEM 119 SA #1 0+00-4+00

STEEL GUIDE POSTS ITEM 547-B SA #1 5+30-6+74 RT

DEMOLITION & DISPOSAL of BUILDINGS 45+40 RT 1 46+40 LT 3

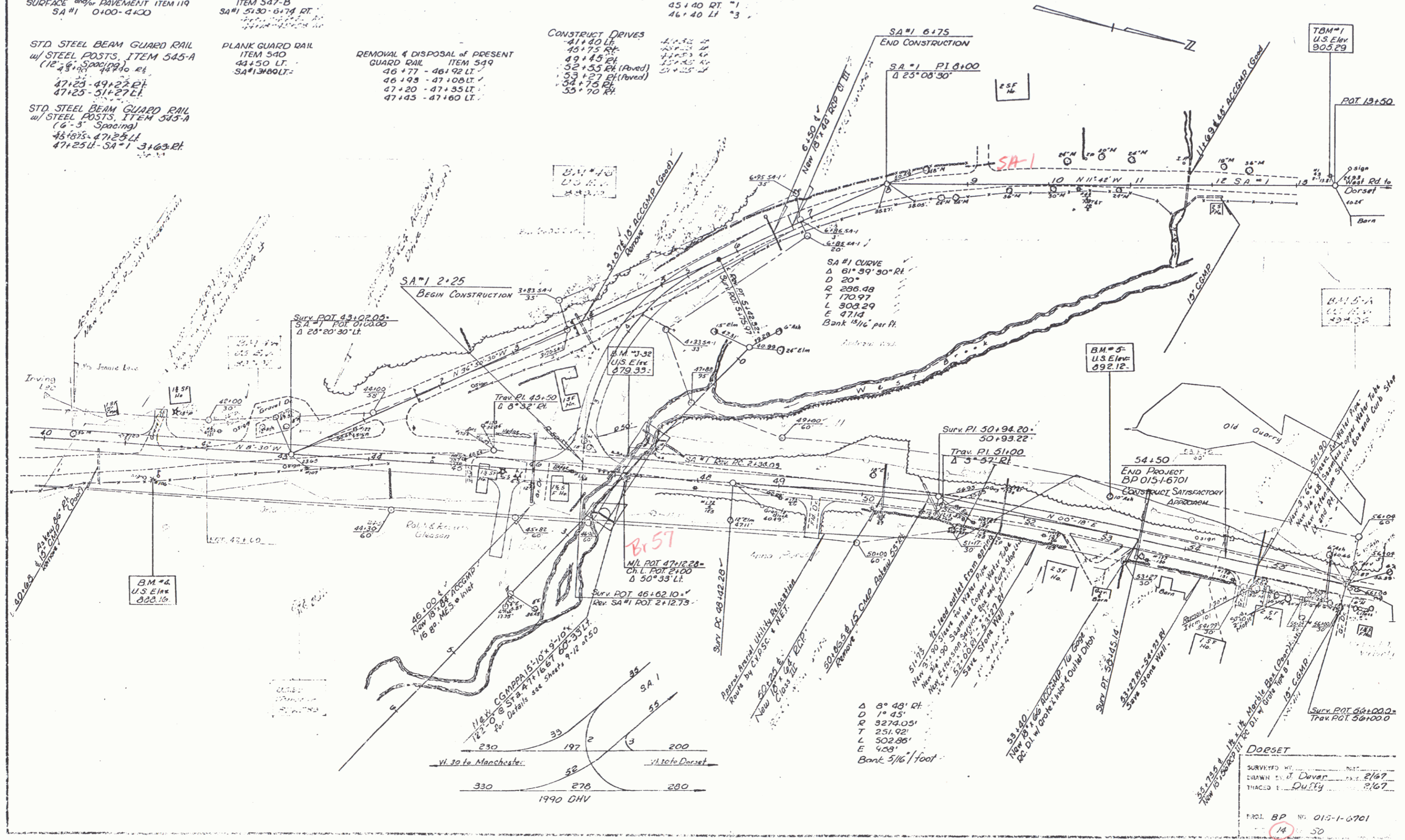
STD STEEL BEAM GUARD RAIL w/ STEEL POSTS, ITEM 545-A (12'-5" Spacing) 44+90 RT 47+25-49+27 RT 47+25-51+27 LT

PLANK GUARD RAIL ITEM 540 44+50 LT SA #1 3+80 LT

REMOVAL & DISPOSAL of PRESENT GUARD RAIL - ITEM 549 46+77 - 46+92 LT 46+93 - 47+08 LT 47+20 - 47+35 LT 47+45 - 47+60 LT

CONSTRUCT DRIVES 41+40 RT 45+75 RT 49+45 RT 52+55 RT (Paved) 53+27 RT (Paved) 54+75 RT 55+70 RT

STD STEEL BEAM GUARD RAIL w/ STEEL POSTS, ITEM 545-A (6'-5" Spacing) 45+87S-47+25 LT 47+25U-SA-1 3+63 RT



BM #4
U.S. Elev
888.16

BM #3
U.S. Elev
879.35

BM #5
U.S. Elev
892.12

TBM #1
U.S. Elev
905.29

BM #1
U.S. Elev
894.36

Br 57
U.S. Elev
879.35

U.S. Elev
879.35

Δ 8° 48' RT
D 1° 45'
R 5274.05'
T 251.92'
L 502.86'
E 4.89'
Bank 5 1/2' / foot

DORSET
SURVEYED BY J. D. DAVENPORT
DRAWN BY J. DAVENPORT 2/67
TRACED BY D. DUFFY 2/67

PROJ. BP No. 015-1-6701
14 50