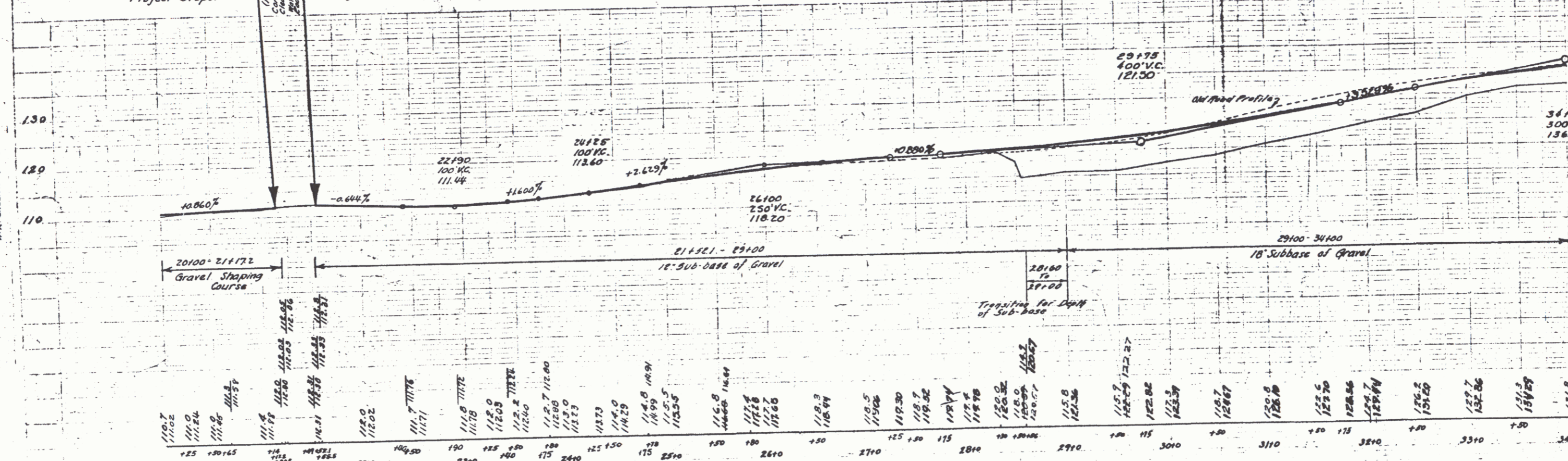
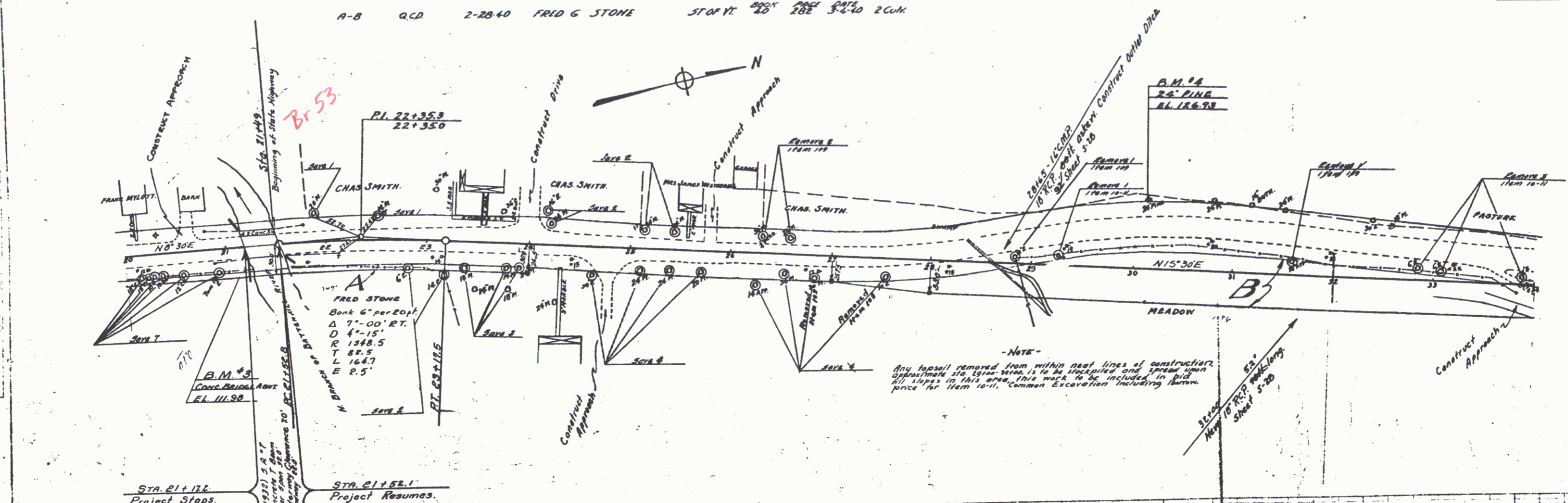






PARCEL INSTRUMENT DATE GRANTOR GRANTEE RECORDED REMARKS  
 A-B Q.C.D. 2-28-40 FRED G. STONE STONY PT. 2D 282 3-2-40 2C.W.H.

FED. ROAD STATE FED. AD. DISCAL SHEET TOTAL  
 DIST. IN. 11180 1940 3 74

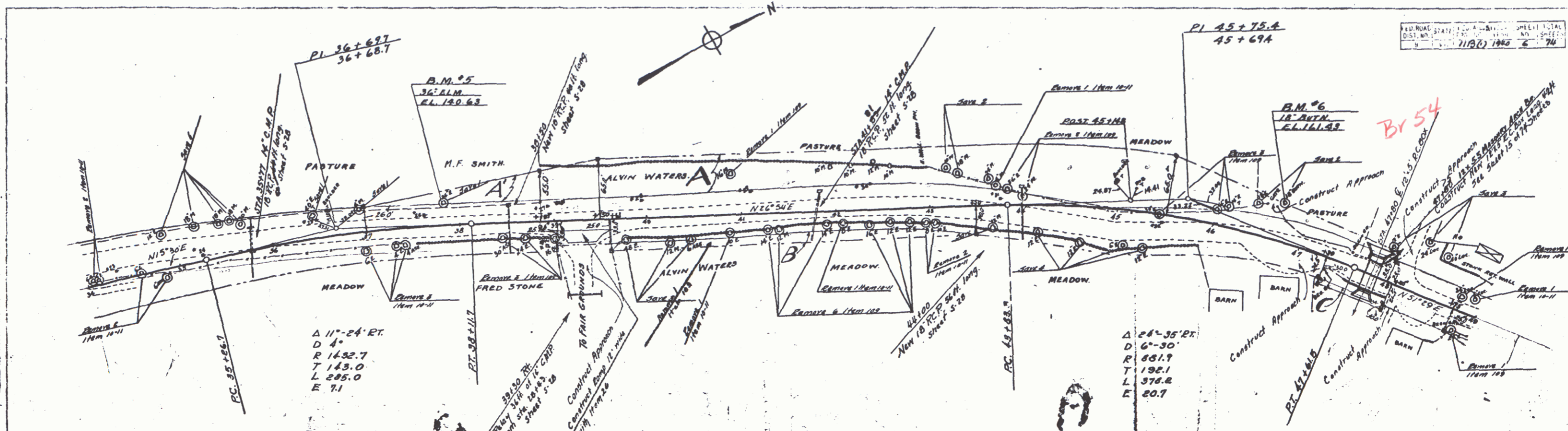


B.M. #3 SPOT ON CONC. BRIDGE ABUT. 11' RT. STA. 21+20 ELEV. 111.98  
 B.M. #4 S.I.R. 24" PINE 67' LT. STA. 30+11 ELEV. 126.93

SERIES F.A.S. No. 1113  
 SHEET 3 OF 74

BARRETT  
 R.R. CHALLENGE 5754  
 H.C. CHALLENGE 5754

BARRETT  
 R.R. CHALLENGE 5754  
 H.C. CHALLENGE 5754

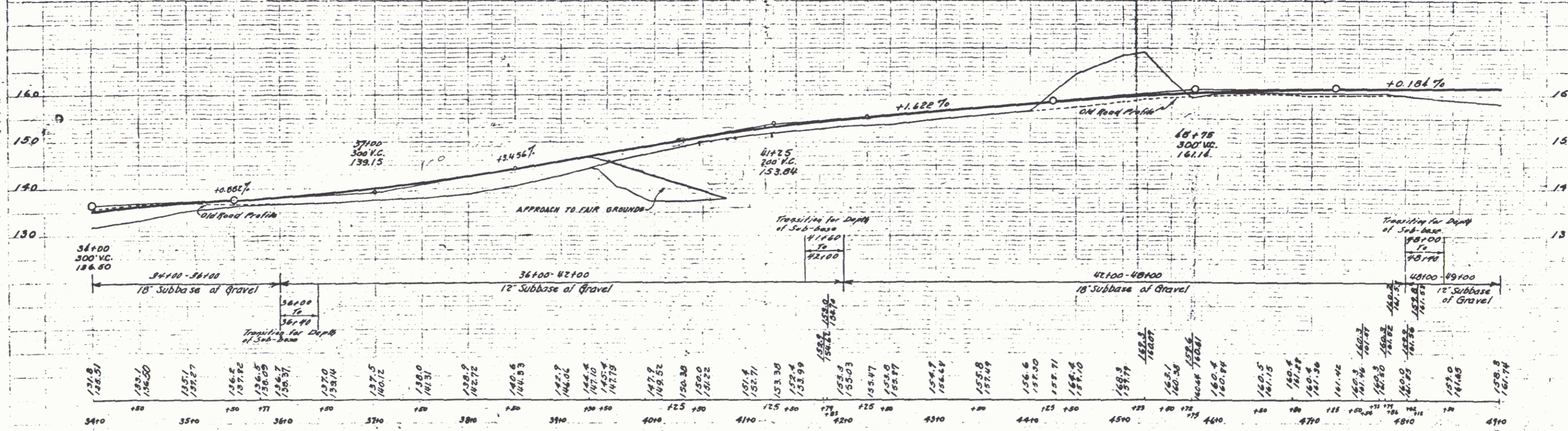


RECORD STATE OF NEW YORK  
 COUNTY OF ...  
 11/22/1940 E 74

$\Delta$  11'-24" RT.  
 D 4'  
 R 1432.7  
 T 143.0  
 L 295.0  
 E 7.1

$\Delta$  24'-35" RT.  
 D 6'-30"  
 R 851.7  
 T 192.1  
 L 378.2  
 E 20.7

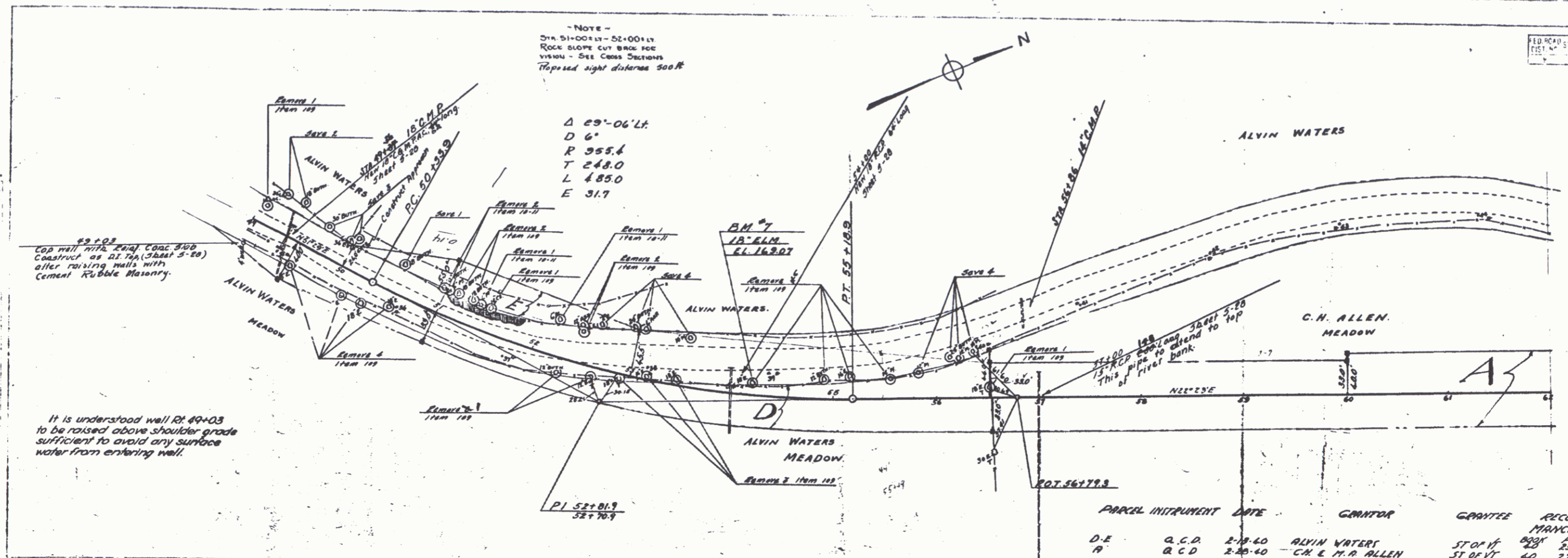
PARCEL	INSTRUMENT	DATE	GRANTOR	GRANTEE	RECORDED	REMARKS
A.B.C.	Q.C.D.	2-13-40	ALVIN WATERS	STUYV.	25	135 2 1/2 40 1 CUL.
D.	Q.C.D.	2-28-40	MORTIMER SMITH	STUYV.	40	280 3 4 40



B.M. #5 S.I.R. 36' ELM. 21.5 LT. STA. 37+83 ELEV. 140.63  
 B.M. #6 S.I.R. 18' BUTN. 38.5 LT. STA. 46+72 ELEV. 161.43

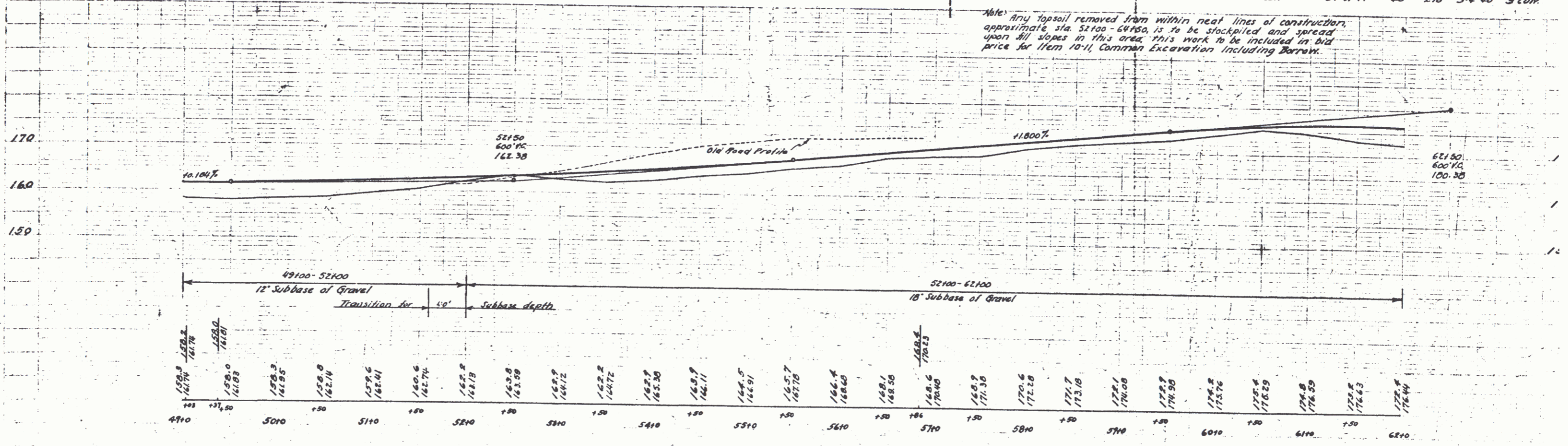
SERIES FAS 16.115(1)  
 SHEET 6 OF 74

NOTE -  
 STA 5100+11 - 52+00+11  
 ROCK SLOPE CUT BEHIND FOR  
 VISION - SEE CROSS SECTIONS  
 Truncated sight distance 500 ft



PARCEL	INSTRUMENT	DATE	GRANTOR	GRANTEE	RECORDED	REMARK
D-E	Q.C.D.	2-18-40	ALVIN WATERS	ST OF VT	400K 257	1 Cont.
A	Q.C.D.	2-25-40	C.H. & M.R. ALLEN	ST OF VT	40 278	3-4-40 3 Cont.

Note: Any topsoil removed from within neat lines of construction, approximately sta. 5100 - 62100, is to be stockpiled and spread upon all slopes in this area. This work to be included in bid price for Item 10-11, Common Excavation, including Barrage.



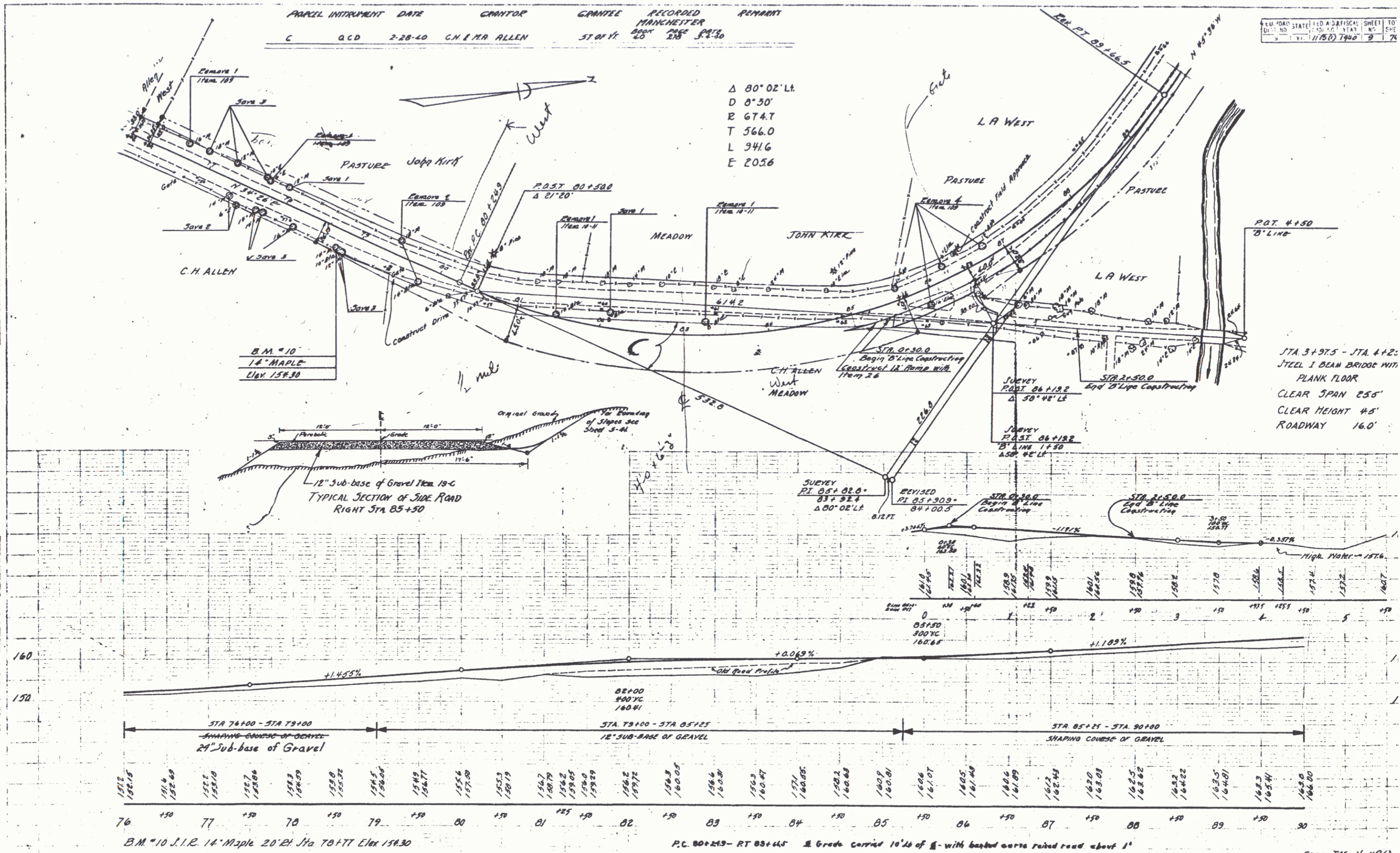
B.M. #7 SPIKE IN TRUNK 18' ELM. 9' LT. STA 54+21. ELEV. 169.07



PARCEL INSTRUMENT	DATE	GRANTOR	GRANTEE	RECORDED	REMARKS
C	OCD	2-28-40	C.H. ALLEN	ST. OF V.	MANCHESTER PAGE 235 DATE 3-2-30

PL. ROAD STATE FILED A PHYSICAL SHEET TO  
 DIST. NO. 11587 1940 9 74

Δ 80° 02' Lt.  
 D 0° 30'  
 E 674.7  
 T 566.0  
 L 941.6  
 E 205.6

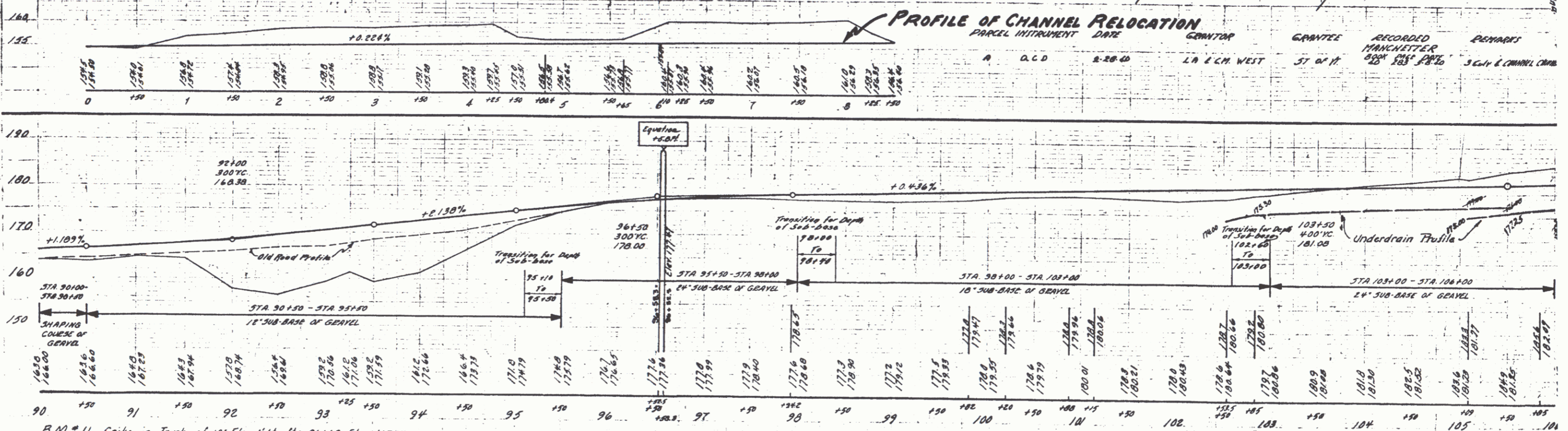
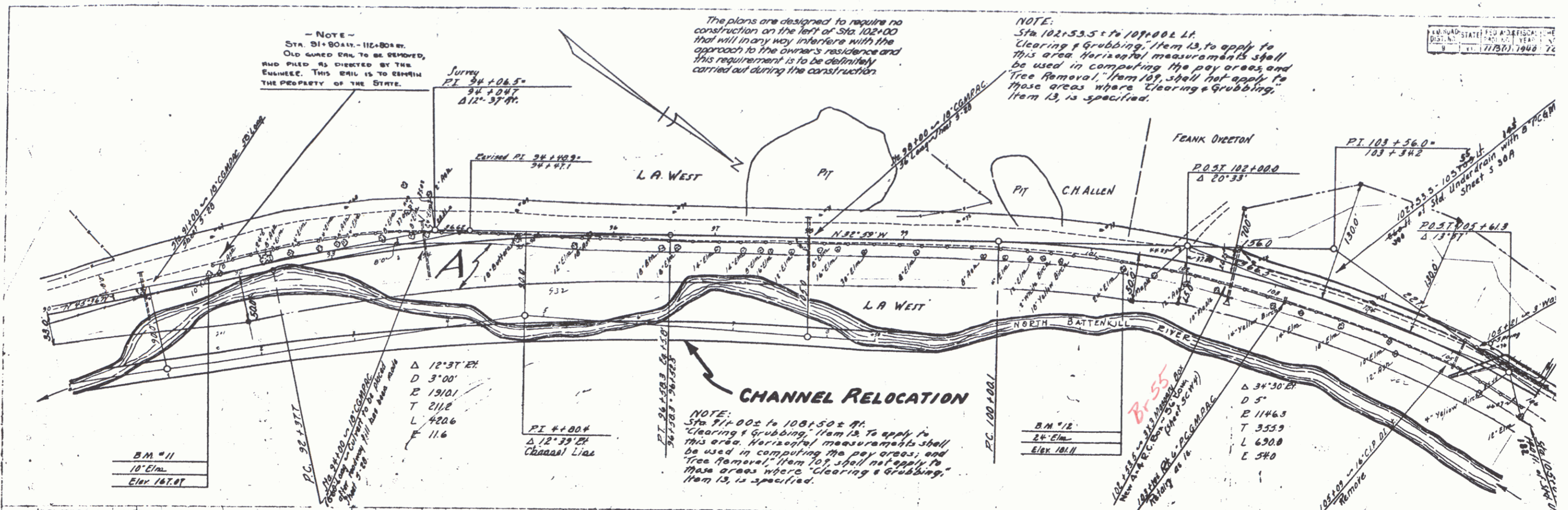


STA. 3+97.5 - STA. 4+2:  
 STEEL I BEAM BRIDGE WITH  
 PLANK FLOOR  
 CLEAR SPAN 25'  
 CLEAR HEIGHT 45'  
 ROADWAY 16.0'

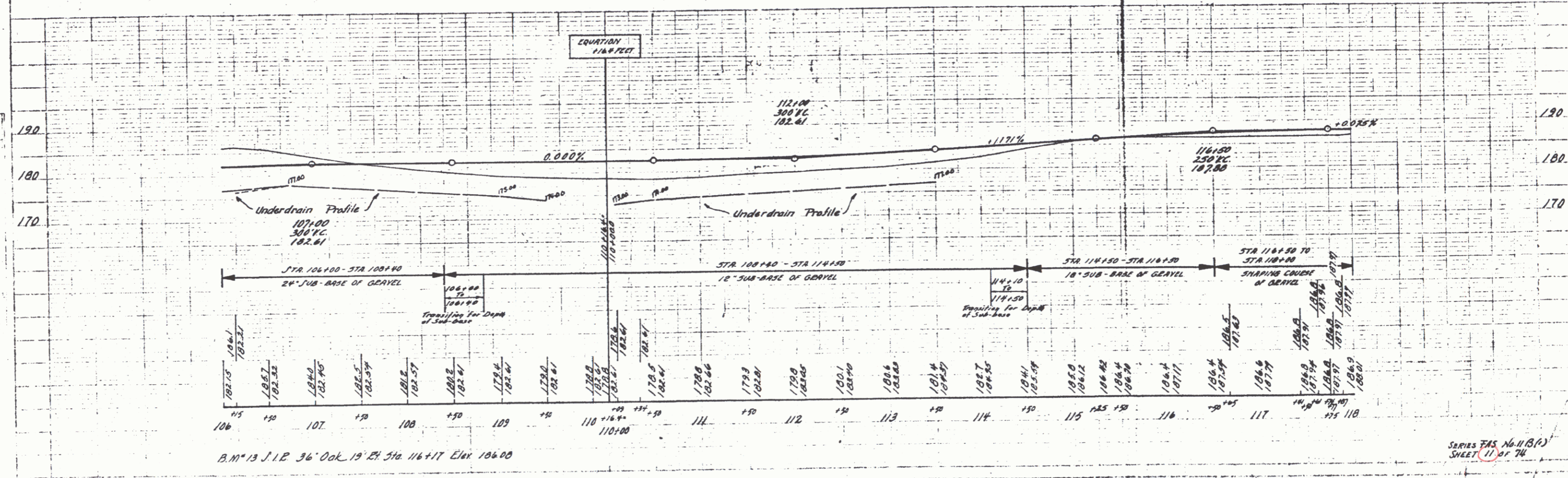
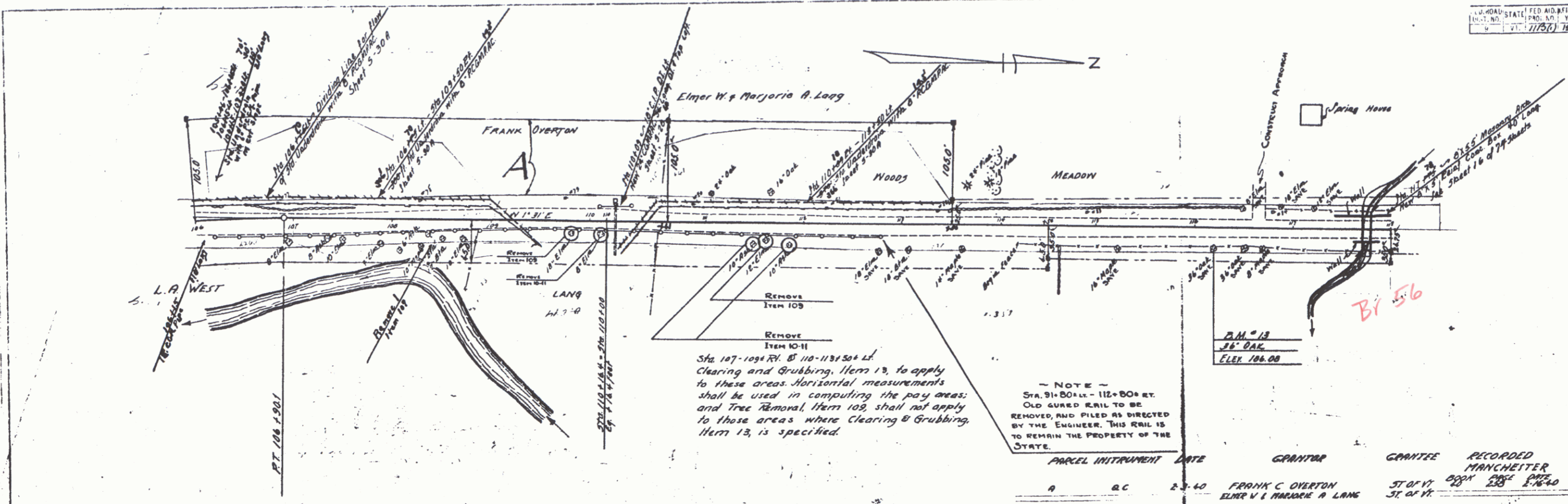
B.M. #10 J.I.P. 14 Maple 20' E of Sta 70+77 Elev 154.30

P.C. 80+24.9 - RT 85+44.5 1/2 Grade Carried 10' Ls of 1/2" with basket curbs raised road about 1'

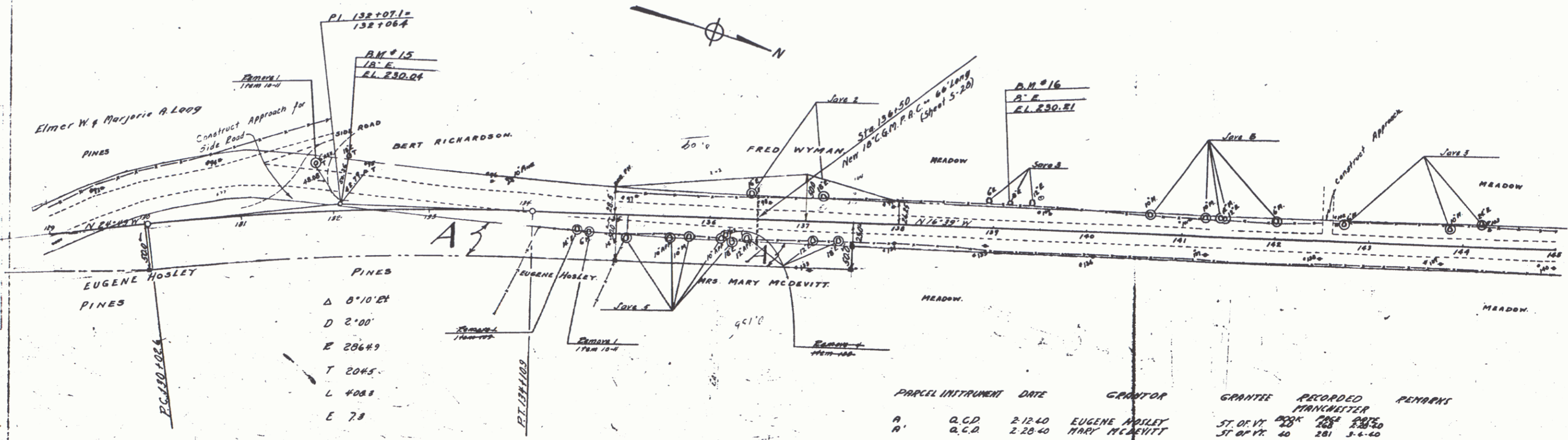
SERIES 7AS No. 113(6)  
 SHEET 9 of 74



B.M. #11 Spike in Truck at 10' Elm. 1' Lt. Sta 91+62 Elev. 167.07  
 B.M. #12 Spike in Truck at 24' Elm. 17' Lt. Sta 101+36 Elev. 181.11

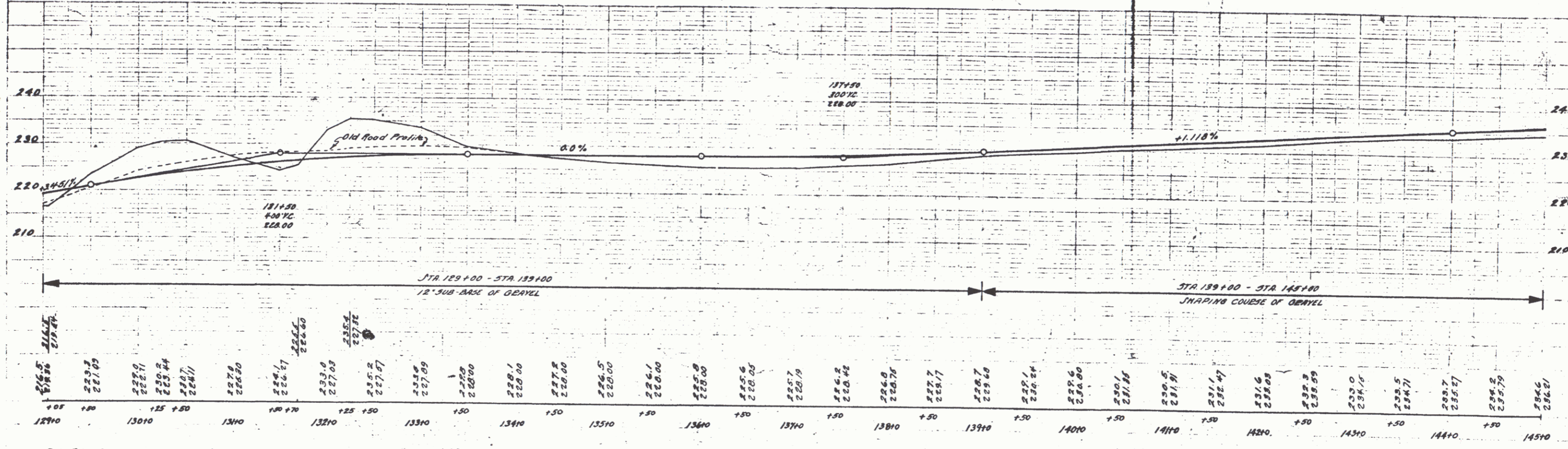






PINES  
 Δ 8'10" E  
 D 2'00"  
 E 20649  
 T 2045  
 L 4088  
 E 78

PARCEL INSTRUMENT	DATE	GRANTOR	GRANTEE	RECORDED	REMARKS
A	Q.C.D. 2-12-40	EUGENE HOILEY	ST. OF VT	281	281
A	Q.C.D. 2-28-40	MARY McDEVITT	ST OF VT	281	281 3-6-40



B.M. #15 S.I.R. 18" ELM. 56' LT. STA. 132+15 ELEV. 230.04  
 B.M. #16 SPIKE IN TRUNK 8" ELM. 25.5' LT. STA. 139+15 ELEV. 230.21

