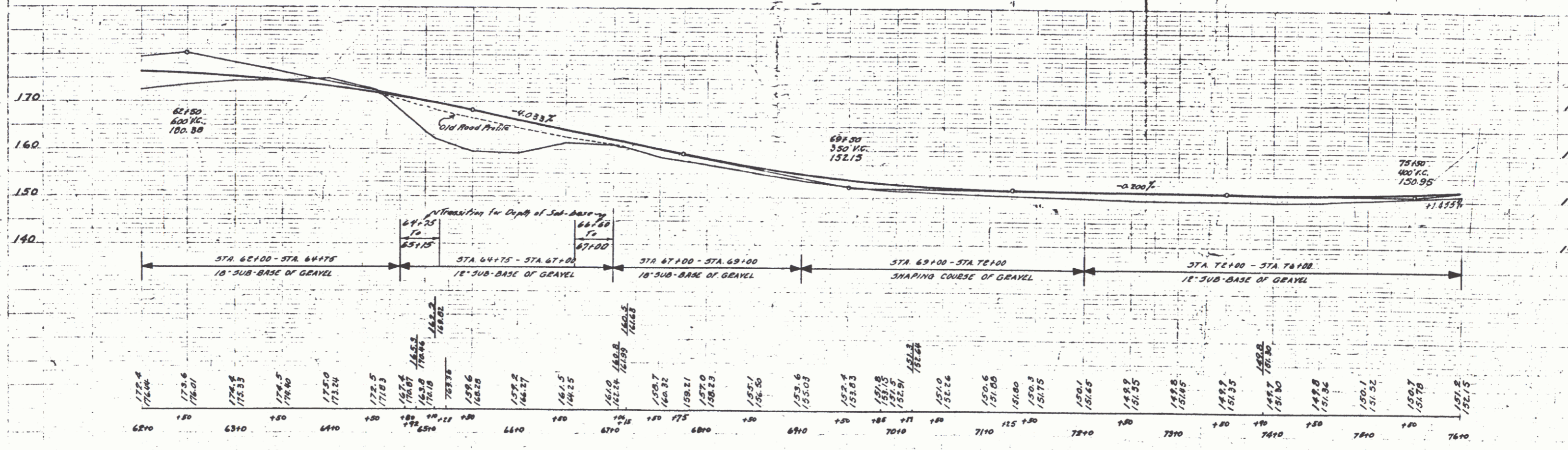
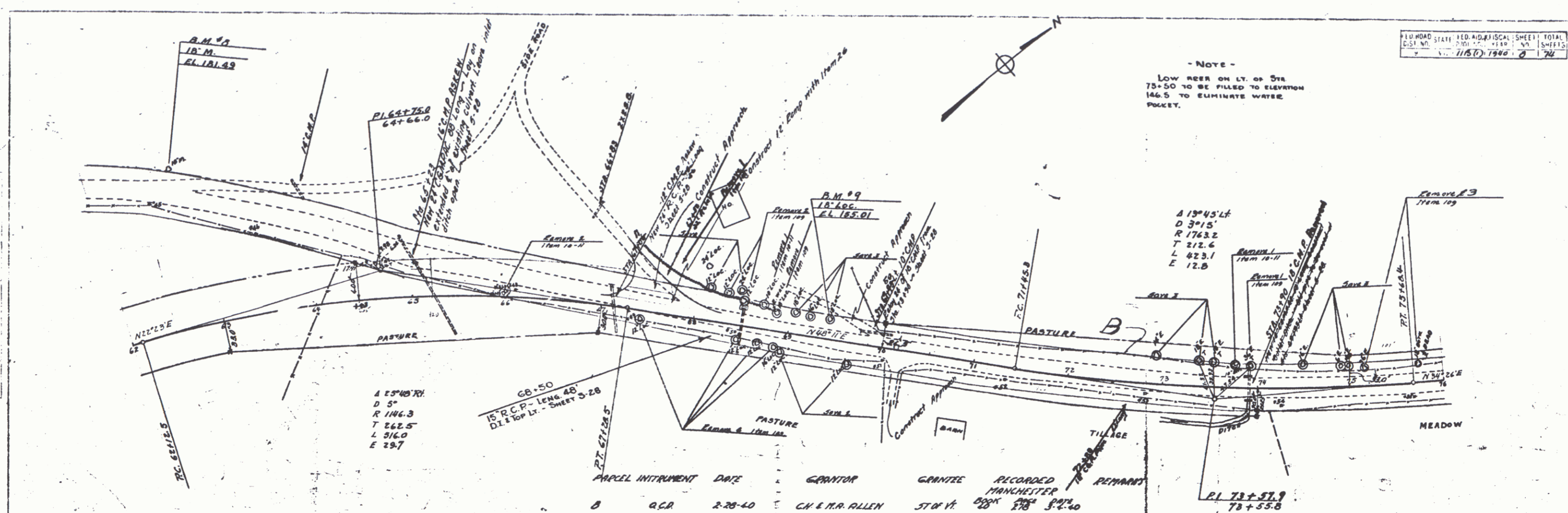


- NOTE -
 LOW REER ON LT. OF STA
 73+50 TO BE FILLED TO ELEVATION
 146.5 TO ELIMINATE WATER
 POCKET.



B.M. #8 S.I.R. 18' M. 170' LT. 62+93 ELEV. 141.93
 B.M. #9 S.I.R. 18' LOC. 19' LT. STA. 69+41 ELEV. 155.01