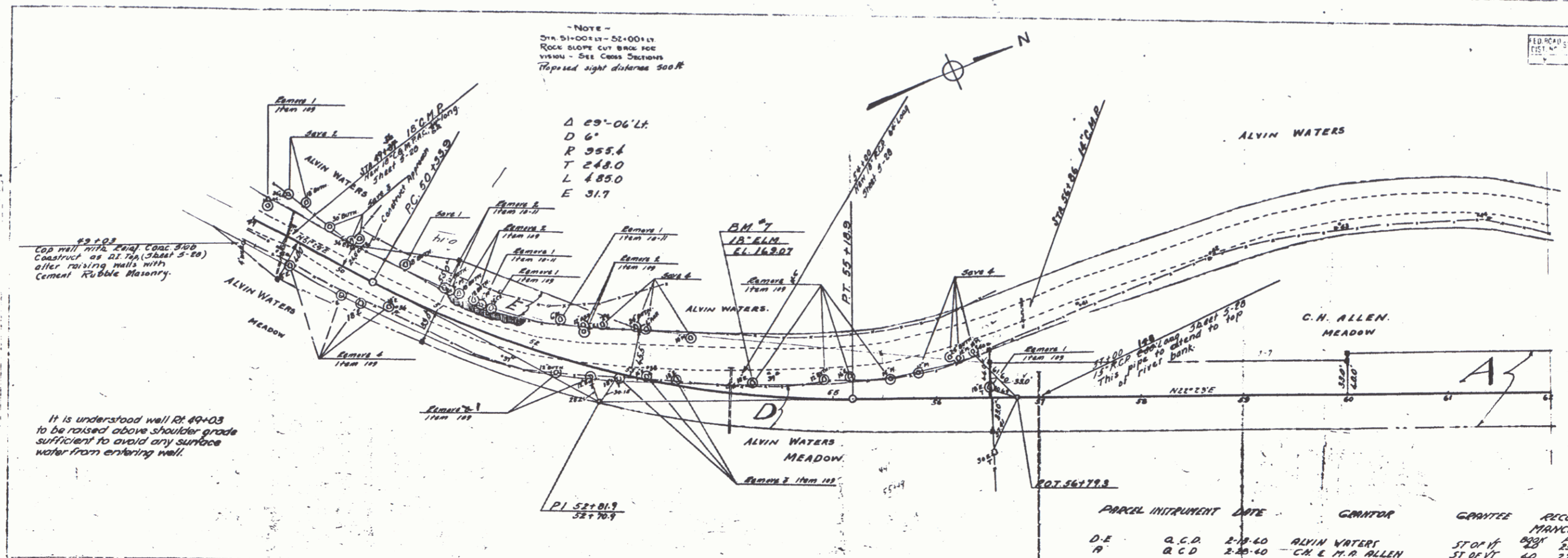
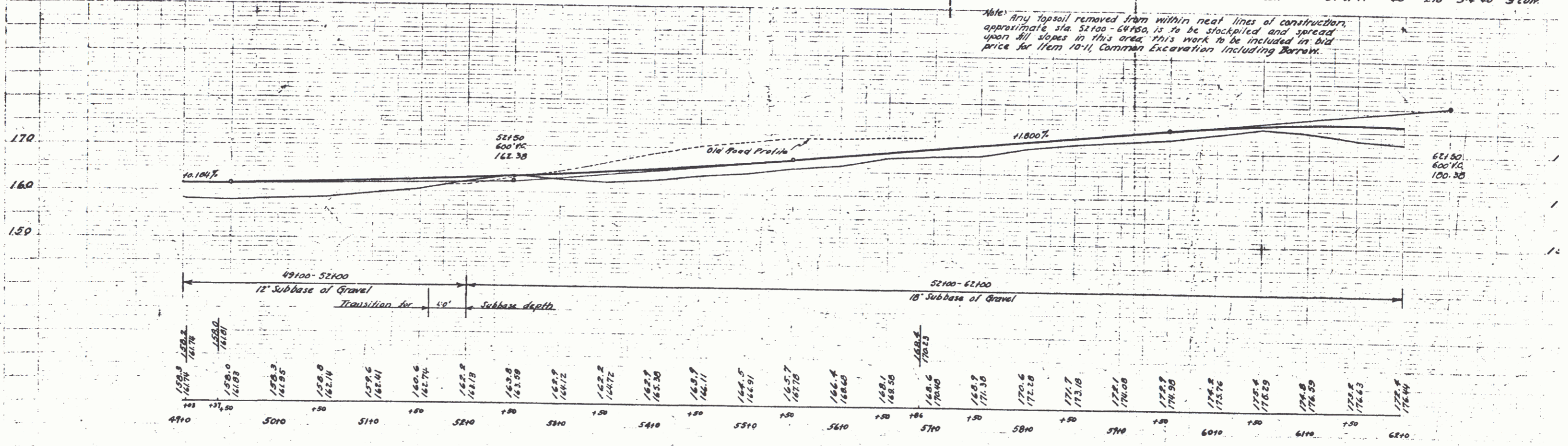


NOTE -
 STA 5100+11 - 52+00+11
 ROCK SLOPE CUT BEHIND FOR
 VISION - SEE CROSS SECTIONS
 Trapped sight distance 500 ft



PARCEL	INSTRUMENT	DATE	GRANTOR	GRANTEE	RECORDED	REMARK
D-E	Q.C.D.	2-18-40	ALVIN WATERS	ST OF VT	400	1 Cont.
A	Q.C.D.	2-25-40	C.H. & M.R. ALLEN	ST OF VT	40 270	3-4-40 3 Cont.

Note: Any topsoil removed from within neat lines of construction, approximately Sta. 52100 - 62100, is to be stockpiled and spread upon all slopes in this area. This work to be included in bid price for Item 10-11, Common Excavation, including Barrage.



B.M. #7 SPIKE IN TRUNK 18' ELN. 9' LT. STA 54+21. ELEV. 169.07