

INDEX OF SHEETS	
SHEET NO.	TITLE PAGE
1	TYPICAL CROSS-SECTION OF IMPROVEMENT
2	BANKING AND WEIGHING TABLES
3	PLAN AND PROFILE
4	STANDARD STRUCTURE SHEET
5	PIPE CULVERTS
6	GRIND PAVEMENT
7	STANDARD UNDERPASS
8	BRIDGES, SIGNS & LIGHTS
9	FOUNDING OF SLOPES
10	CROSS SECTIONS

Standard Structure Sheets
 Approved by the Chief Engineer
 328 July 11, 1933
 330 Aug 13, 1934
 331 July 23, 1934

STATE OF VERMONT
 STATE HIGHWAY DEPARTMENT

PLAN AND PROFILE OF PROPOSED
 STATE HIGHWAY

TOWN OF TOWNSHEND
 NEWFANE-JAMAICA ROAD

BEGINNING AT A POINT ON ROUTE 30 554 FT. WEST
 OF THE INTERSECTION WITH THE ROAD TO ATHENS IN TOWNSHEND
 VILLAGE AND EXTENDING WESTERLY 0.861 MILES.

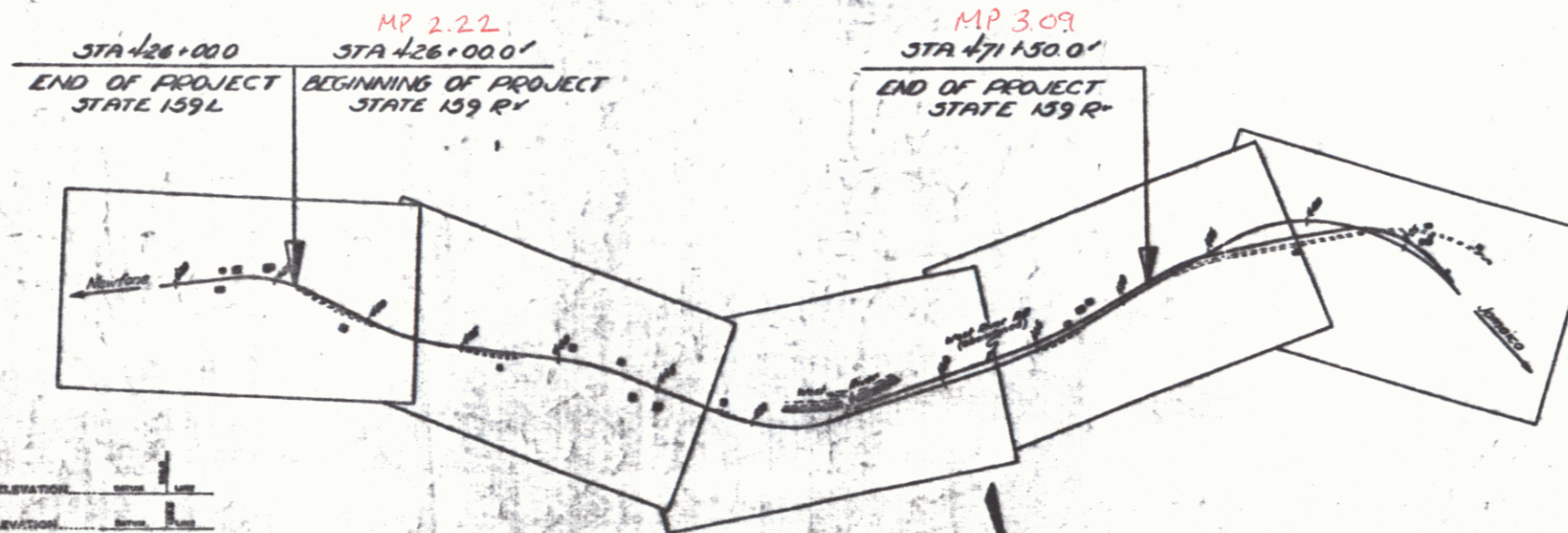
LENGTH OF PROJECT 4550.0 FT. = 0.861 MI.

Project **St 159R**
 Pin **00R356**
 Date **06/13/40**



RECORD PLANS

POOR ORIGINAL COPY



GROUND ELEVATION
 GRADE ELEVATION

CURVE DATA
 DEFLECTION ANGLE
 DEGREE OF CURVE
 RADIUS OF CURVE
 TANGENT DISTANCE
 LENGTH OF CURVE
 EXTERNAL DISTANCE

SCALES
 TITLE 1" = 100'
 TYPICAL 1" = 2'
 PLAN 1" = 50'
 PROFILE HORIZONTAL 1" = 50'
 VERTICAL 1" = 10'
 CROSS SECTIONS 1" = 5'

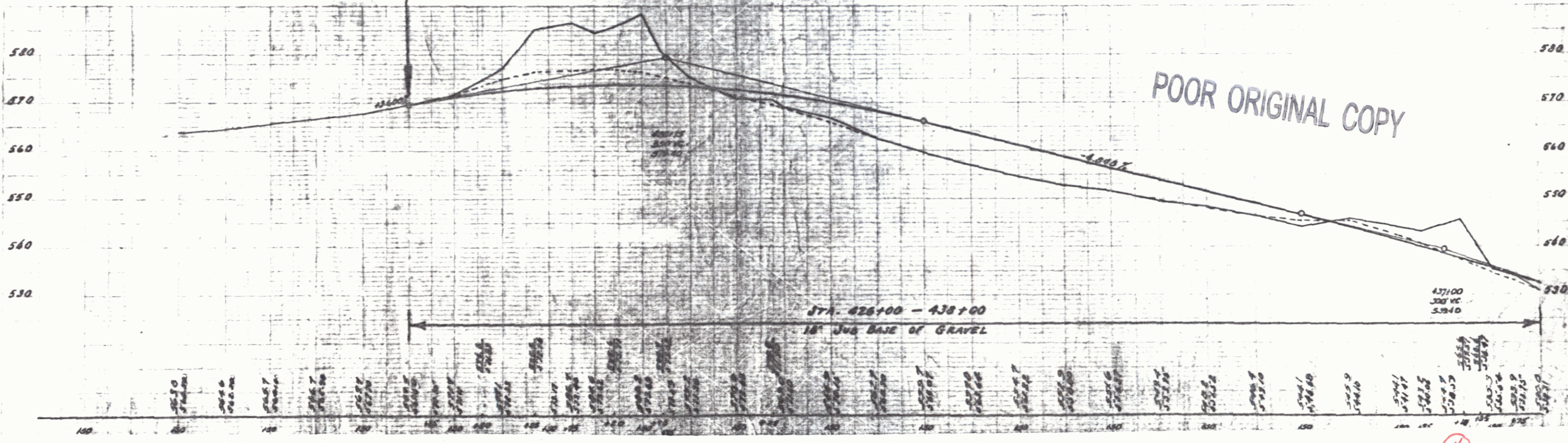
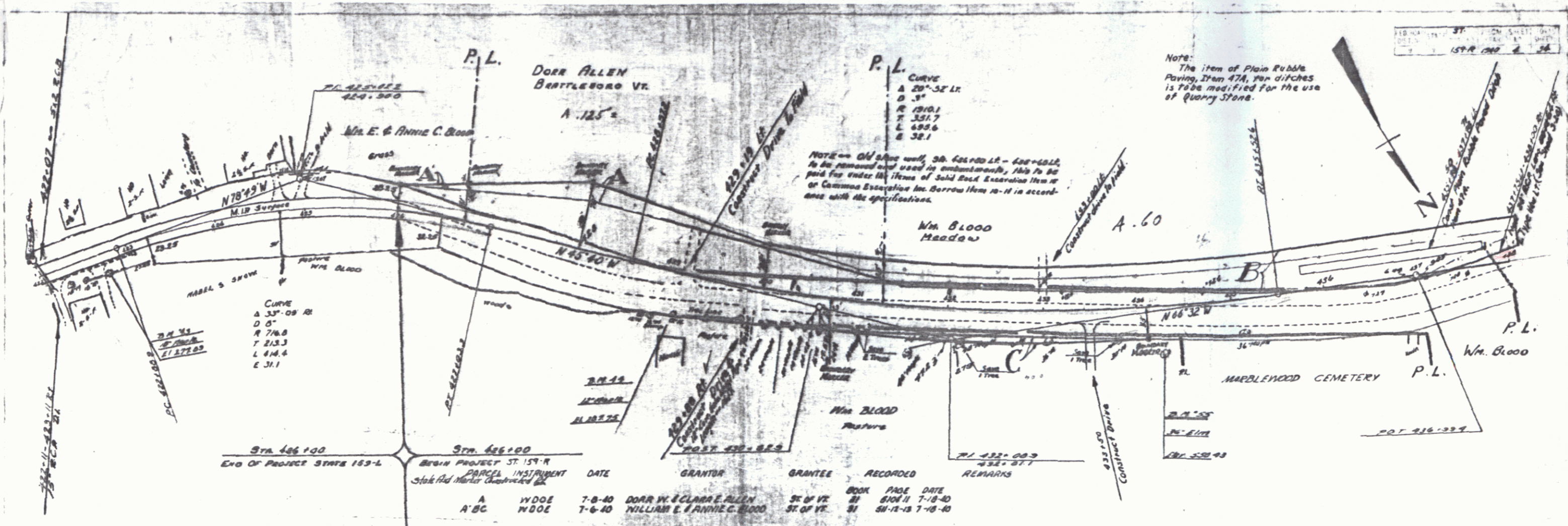
APPROVED: *June 13, 1940*
H. H. Jenkins
 COMMISSIONER OF HIGHWAYS
 SUBMITTED BY ORDER OF THE STATE HIGHWAY BOARD

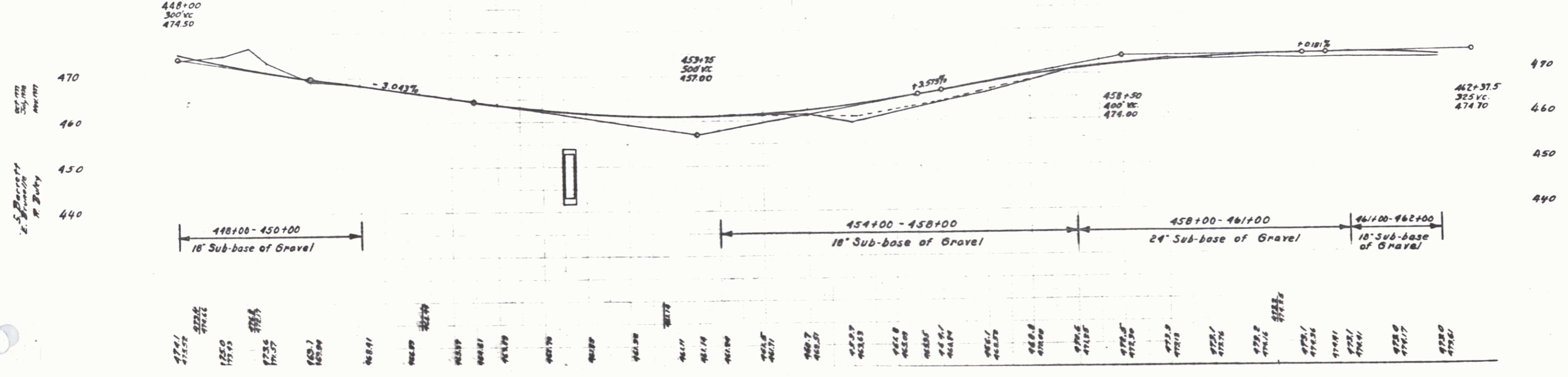
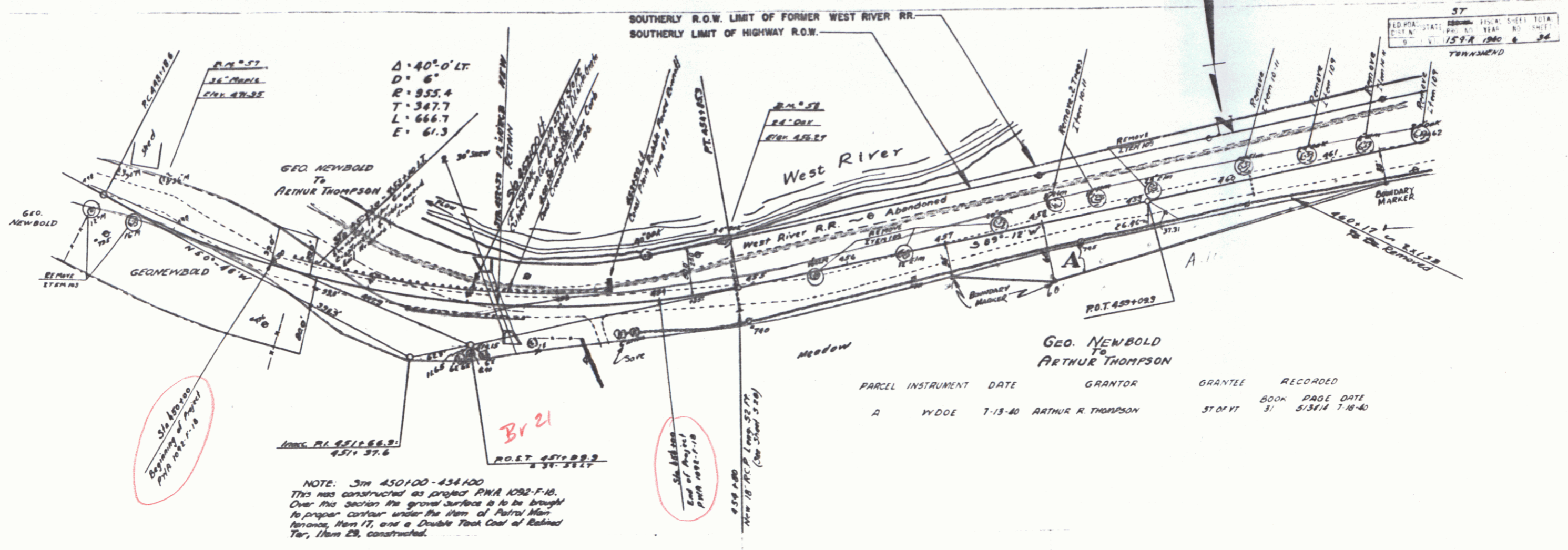
STEARNS R. JENKINS
 THESE PLANS ARE SUBJECT TO SUCH REVISIONS AS MAY BE
 REQUIRED BY THE PUBLIC ROADS ADMINISTRATION OR THE
 COMMISSIONERS OF HIGHWAYS.
 CONSTRUCTION IS TO BE CARRIED ON IN ACCORDANCE WITH
 THE PLANS AND THE STANDARD ROAD AND BRIDGE SPECIFICATIONS
 OF 1938, AS APPROVED DECEMBER 29TH, 1938 BY THE PUBLIC
 ROADS ADMINISTRATION, INCLUDING ALL SUBSEQUENT APPROVED
 REVISIONS AND SUCH REVISED SPECIFICATIONS AND SPECIAL
 PROVISIONS AS ARE SUBMITTED WITH THE PLANS.

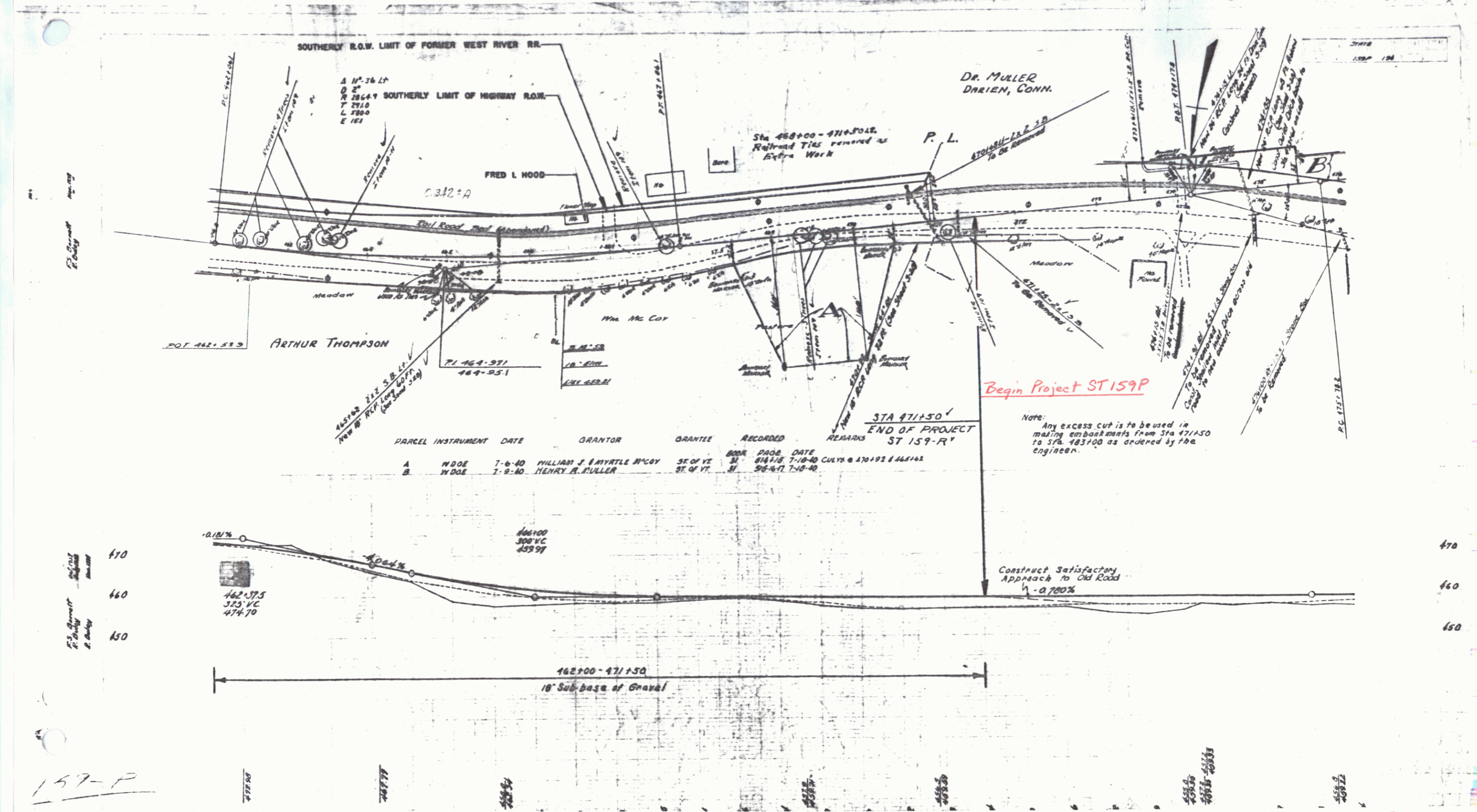
RECOMMENDED FOR APPROVAL
 PUBLIC ROADS ADMINISTRATION
 SPECIAL ENGINEER
 APPROVED

CORD PLANS
 Town 52, 159 R
 Section - Front of Fabian 1941

1







Δ N^o. 36 LP
 D 2"
 R 2864.7 SOUTHERLY LIMIT OF HIGHWAY R.O.W.
 T 291.0
 L 350.0
 E 181

DR. MULLER
DRIEN, CONN.

Sta 468+00 - 471+50.18
Railroad Ties removed as
Extra Work

ARTHUR THOMPSON

PARCEL	INSTRUMENT	DATE	GRANTOR	GRANTEE	RECORDED	REMARKS
A	N.DOE	7-6-40	WILLIAM J. MYRTLE MCCOY	SE OF V2	BOOK PAGE DATE	
B	N.DOE	7-9-40	HENRY A. FULLER	SE OF V2	814+18 7-18-40	CULYS @ 470+92 & 465+62

Begin Project ST 159P

Note: Any excess cut is to be used in making embankments from Sta 471+50 to Sta. 483+00 as ordered by the engineer.

Construct Satisfactory Approach to Old Road
-0.700%

162+00 - 471+50
18" Sub-base of Gravel

159-P

9