

INDEX OF SHEETS

SHEET NO.	1	TITLE PAGE
2	TYPICAL CROSS-SECTION OF IMPROVEMENT (CRUSHED GRAVEL MIXED IN PLACE SURFACE COURSE WITH REFINED TAR, ITEM 34) (MODIFIED)	
3	BANKING AND WIDENING TABLES	
4	QUANTITY SHEET (ITEMS)	
5	QUANTITY SHEET (DRAINAGE)	
6-9	EARTHWORK SHEETS	
10-19	PLAN AND PROFILE SHEETS	
20	PRELIMINARY INFORMATION SHEET	
21	PLAN AND SECTIONS OF SUPERSTRUCTURE	
22	PLAN AND ELEVATIONS OF SUBSTRUCTURE	
23	ABUTMENTS NO. 1 AND NO. 2	
24	PIERS NOS. 1, 2 AND 3	
25	SUPERSTRUCTURE	
26	BEARING DEVICES	
27	DETAILS OF COVER AND SPLICE PLATES	
28	EXPANSION PLATE DETAILS	
29	CURB AND RAIL DETAILS	
30	APPROACH SLABS	
31-35	CHANNEL SECTIONS	
36A	EARTHWORK SHEET - BRIDGE QUANTITIES	
37	STANDARD STRUCTURE SHEET SB 2 DETAIL - S 206	
38	STANDARD STRUCTURE SHEET SB 11 BARRICADES, SIGNS AND LIGHTS (BRIDGE)	
39	STANDARD STRUCTURE SHEET SB 20 DETAILS D, E, F, I, J, AND K	
40	DETAILS OF 4' X 6' R.C. BOX EXTENSION	
41	STANDARD STRUCTURE SHEET S 40 BARRICADES, SIGNS AND LIGHTS ROADWAY	
42	STANDARD STRUCTURE SHEET S 41 ROUNDING OF SLOPES	
43	STANDARD STRUCTURE SHEET S 46-45 BOUNDARY MARKERS	
44	STANDARD STRUCTURE SHEET S 47-45 PIPE CULVERTS	
45	STANDARD STRUCTURE SHEET S 48-46 THREE CABLE GUARD RAIL	
46	STANDARD STRUCTURE SHEET DEAD END ANCHORAGE AT BRIDGE APPROACH	
47-56	CROSS SECTIONS	

STANDARD STRUCTURE SHEETS APPROVED BY THE CHIEF ENGINEER, VERMONT STATE DEPARTMENT OF HIGHWAYS.

SB-11 DEC 18, 1945
S-40 FEB 28, 1949
S-46-45 FEB 28, 1949
S-47-45 FEB 28, 1949
S-48-46 MAY 13, 1946

STATE OF VERMONT
STATE HIGHWAY DEPARTMENT

PLAN AND PROFILE OF PROPOSED STATE HIGHWAY

SECONDARY PROJECT

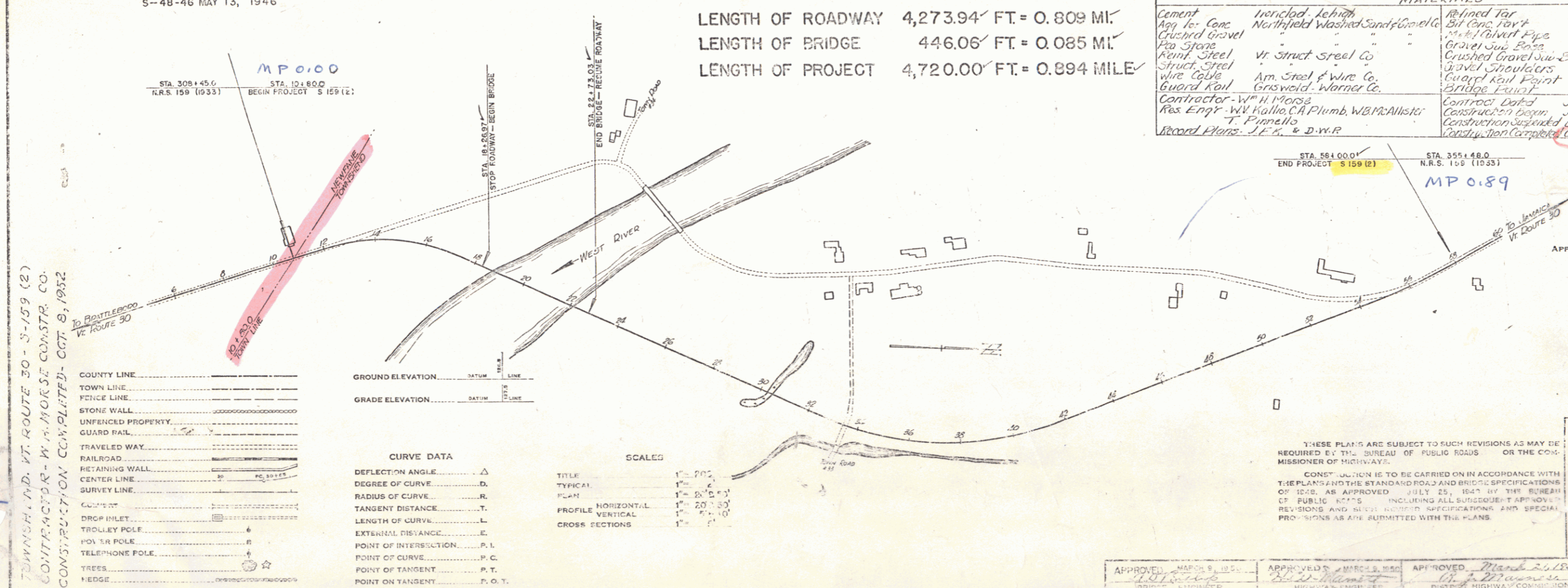
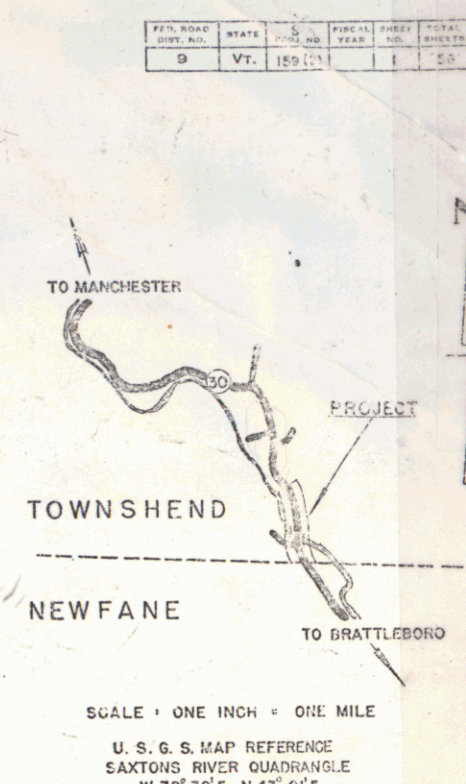
TOWN OF TOWNSHEND

COUNTY OF WINDHAM
BRATTLEBORO-MANCHESTER ROAD
VERMONT ROUTE 30

BEGINNING AT THE NEWFANE-TOWNSHEND TOWN LINE AND EXTENDING NORTHWESTERLY 4,720.0 FEET.

LENGTH OF ROADWAY 4,273.94 FT. = 0.809 MI.
LENGTH OF BRIDGE 446.06 FT. = 0.085 MI.
LENGTH OF PROJECT 4,720.00 FT. = 0.894 MILE

NAME AND NUMBER	TYPE
Townshend R. 3 159 (2)	Cont. vt. Bm Pt. 30 Newl. 4. 11x6" Spans. 2. 1'6" wide 3. 1'
RECORD PLANS	
MATERIALS	
Cement	Wendell, Lehigh
Agg. Co. Conc.	Northfield Washed Sand & Gravel Co.
Crushed Gravel	Met. Culvert Pipe
Pre. Stone	Gravel Sub. Base
Reinf. Steel	Crushed Gravel Sub. Base
Struct. Steel	Gravel Strainers
Wire Cable	Cable Raw Point
Guard Rail	Grosveld, Warner Co.
Contractor - W. H. Morse	Contract Dated - June 22, 1950
Res. Engr. - W. V. Kallio, C.A.P. Plumb, W.B.M. Allister	Construction begun - July 10, 1950
T. F. Finnello	Construction suspended - Dec. 16, 1951 (Resumed March 1, 1952)
Record Plans - J. G. & D. W. R.	County Work Completed - Oct. 9, 1952



APPROVED: MARCH 20, 1950
H. E. Jenkins
CHIEF ENGINEER

SUBMITTED BY ORDER OF THE STATE HIGHWAY BOARD

DEPARTMENT OF COMMERCE
BUREAU OF PUBLIC ROADS
RECOMMENDED FOR APPROVAL

DISTRICT ENGINEER DATE
APPROVED Pin # 008354
DIVISION ENGINEER D. E.

APPROVED: MARCH 9, 1950
S. J. Jenkins
BRIDGE ENGINEER

APPROVED: MARCH 9, 1950
G. A. Jenkins
DISTRICT HIGHWAY COMMISSIONER

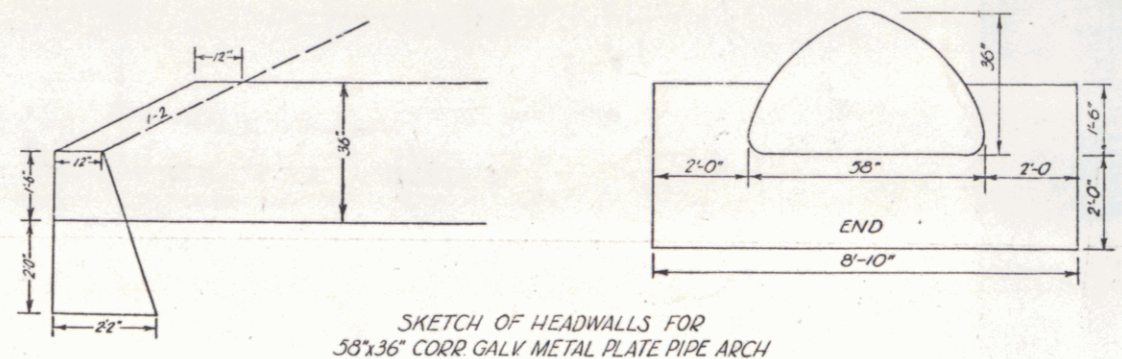
SERIES NO. 1007
SHEET 1 OF 5

STEARNS R. JENKINS

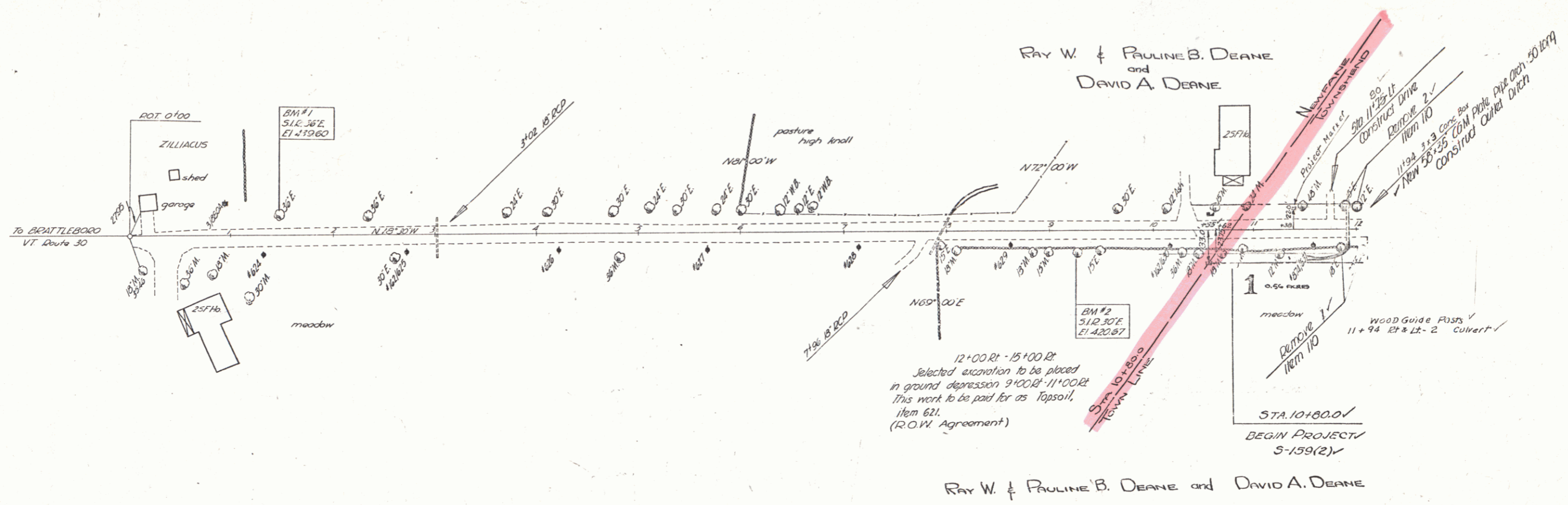
Rt 30

Townshend 52

FED. ROAD DIST. NO.	STATE	PROJ. NO.	SHEET NO.	TOTAL SHEETS
9	VT.			



SKETCH OF HEADWALLS FOR
36" CORR GALV METAL PIPE ARCH
11+94



12+00 Rt - 15+00 Rt
Selected excavation to be placed
in ground depression 9+00 Rt - 11+00 Rt
This work to be paid for as Topsoil,
item 621.
(ROW Agreement)

STA. 10+80.0
BEGIN PROJECT
5-159(2)

ESTIMATED QUANTITIES

--	--

NEWFAINE - TOWNSHEND

Surveyed by
Designed by
Drawn by NLS Jr
Checked by HAS
Checked by
Series S No. 159(2) Sheet 10 of 10

ESTIMATED QUANTITIES (FOR BRIDGE)			
NO.	Item	Quant.	Unit
106	Channel Excavation	18040	CY
107	Structure	696	CY
110	Maintenance of Traffic for Br Proj.	1	L.S.
110	Cutting & Removing Trees	18	ea.
351	Bitum. Conc. Pavt for Bridge Floors	210	Tons
401-B	Conc. Class B	667	CY
401-C	Conc. Class C	501	CY
402	Reinforcing Steel	166,140	Lbs.
403A	Structural Steel for Superstruct (Excl. of Rail)	100,140	Lbs.
442	Removal of Present Superstructure	1	L.S.
301	Furnishing Equip. for driving Piles	1	L.S.
302A	Untreated Timber Piling	6000	LF
302A1	Cut-offs Untreated Timber Piling	522	LF
321	Stone Fill Modified	1020	CY
326	Rip Rap for Bank Protection	966	CY
372	Bridge Railing	804	LF

LIST OF SHEETS (FOR BRIDGE)	
Sheet No.	Description
12	Plan
13	Profile
20	Preliminary Information Sheet
21	Plan & Sections of Superstructure
22	Plan & Elevations of Substructure
23	Abutments 1 & 2
24	Piers 1, 2 & 3
25	Superstructure
26	Bearing Devices
27	Details of Cover & Splice Plates
28	Expansion Plate Details
29	Curb & Soil Details
30	Approach Slab
31-35	Channel Sections (6 Sheets)
39	Std. Sht. SB 20, Details, D.E.F.W.S.K.
33	SB 14, Barricades, Signs, & Lights
31	Std. Sht. SB 2, Detail S 206
36A	Earthwork Sheet - Bridge Quantities

PARCEL INSTRUMENT #1 CONDEMNATION W.D.O.E. #2 DATE 3-27-30 5-2-30

GRANTOR: RAY W. & PAULINE B. DEANE CHRISTOPH STUMPE - CASTOU

GRANTEE: ST. OF VT. ST. OF VT.

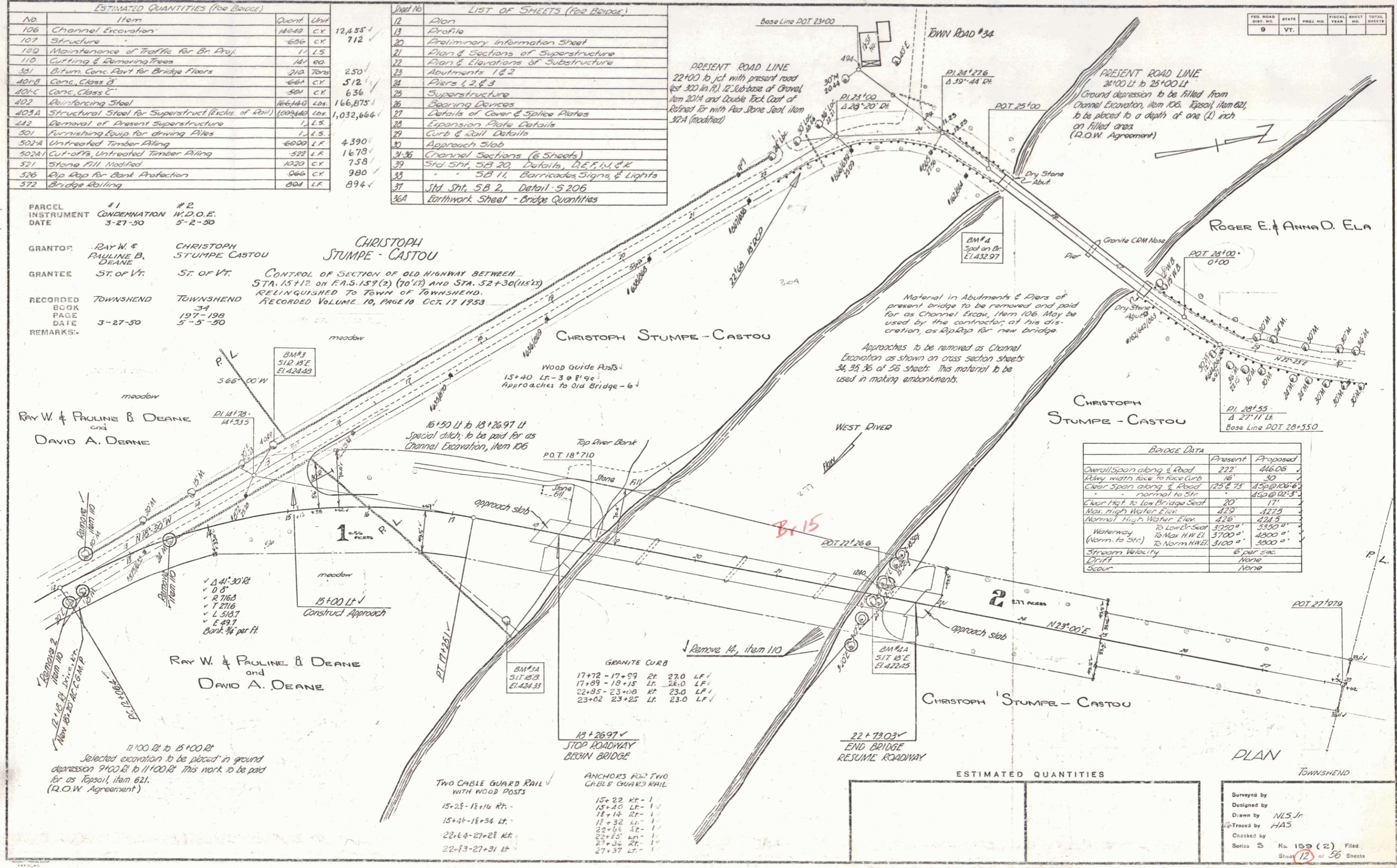
RECORDED TOWNSHEND TOWNSHEND

BOOK PAGE 34

DATE 3-27-30 5-5-30

REMARKS:

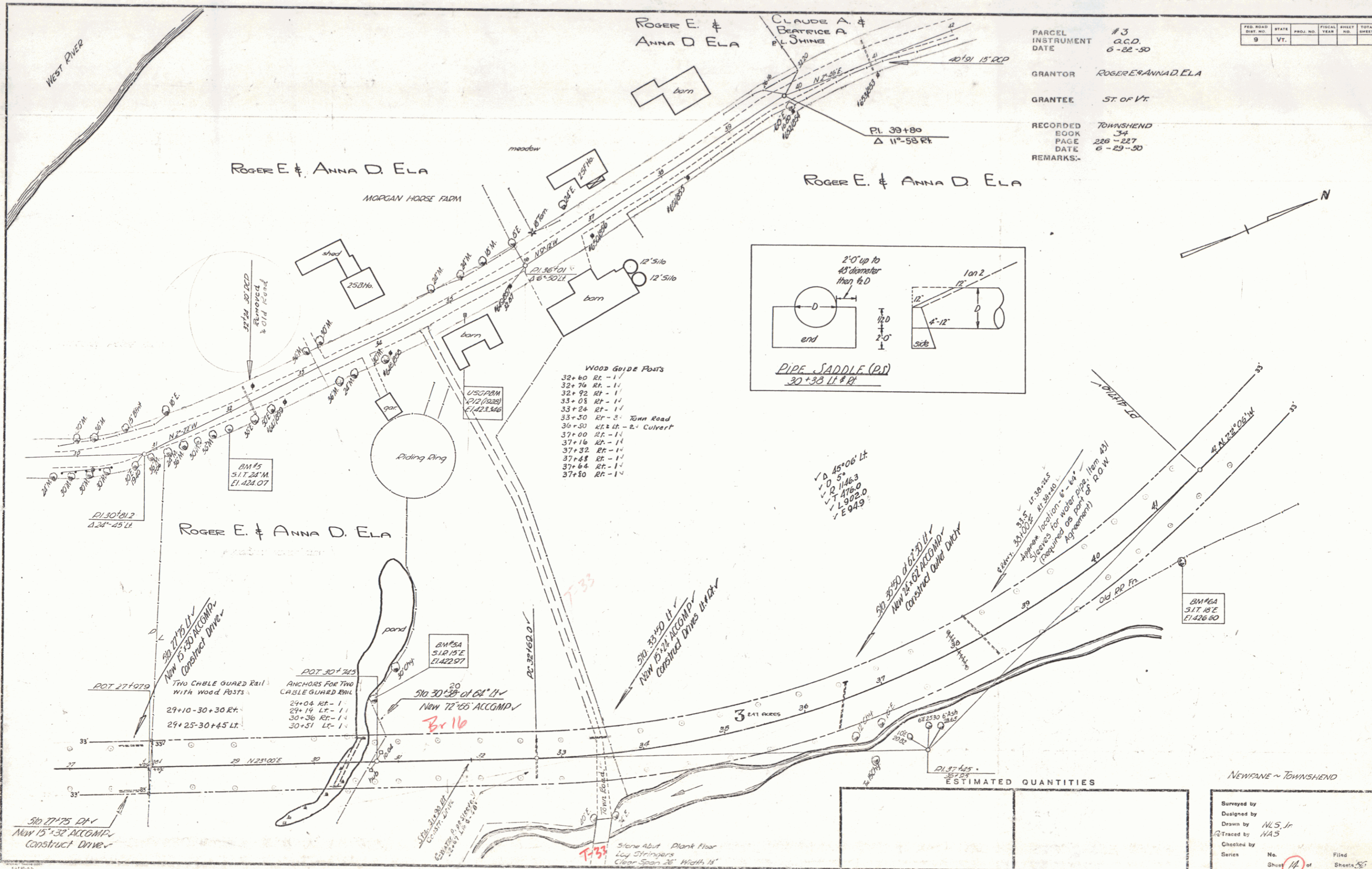
CONTROL OF SECTION OF OLD HIGHWAY BETWEEN STA. 15+12 ON P.A.S. 157 (2) (10' LT) AND STA. 52+30 (115' LT) RELINQUISHED TO TOWN OF TOWNSHEND. RECORDED VOLUME 10, PAGE 10 OCT 17 1933



BRIDGE DATA		
	Present	Proposed
Overall Span along & Road	222'	416.08'
Clear span from face to face curb	18'	30'
Clear span along & Road	125' ± 7 1/2"	450' ± 0' ± 3"
Clear Hgt. to low Bridge Seat	20'	17'
Max. High Water Elev.	429'	427.5'
Normal High Water Elev.	426'	424.9'
Waterway To Low Cr. Seat	3900"	5350"
(Norm. to Str.) To Max. H.W. El.	3700"	4300"
Stream Velocity	3100"	3300"
Scour	None	None

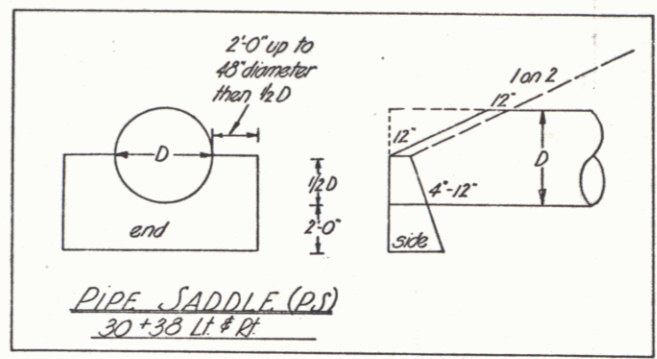
ESTIMATED QUANTITIES	
Two Cable Guard Rail with Wood Posts	
15+25-18+16 Rt.	15+22 Lt - 1
15+41-18+34 Lt.	15+40 Lt - 1
22+64-27+22 Rt.	18+32 Lt - 1
22+23-27+31 Lt.	22+54 Lt - 1
	22+15 Rt - 1
	27+37 Lt - 1

Surveyed by
Designed by
Drawn by NLS Jr.
Checked by HAS
Series 5 No. 159 (2) Filed
Sheet 12 of 36 Sheets



PARCEL INSTRUMENT DATE	#3 G.C.D. 6-22-30
GRANTOR	ROGER E. & ANNA D. ELA
GRANTEE	ST. OF VT.
RECORDED BOOK PAGE DATE	TOWNSHEND 34 226-227 6-29-30
REMARKS:	

FED. ROAD DIST. NO.	STATE	PROJ. NO.	FISCAL YEAR	SHEET NO.	TOTAL SHEETS
9	VT.				



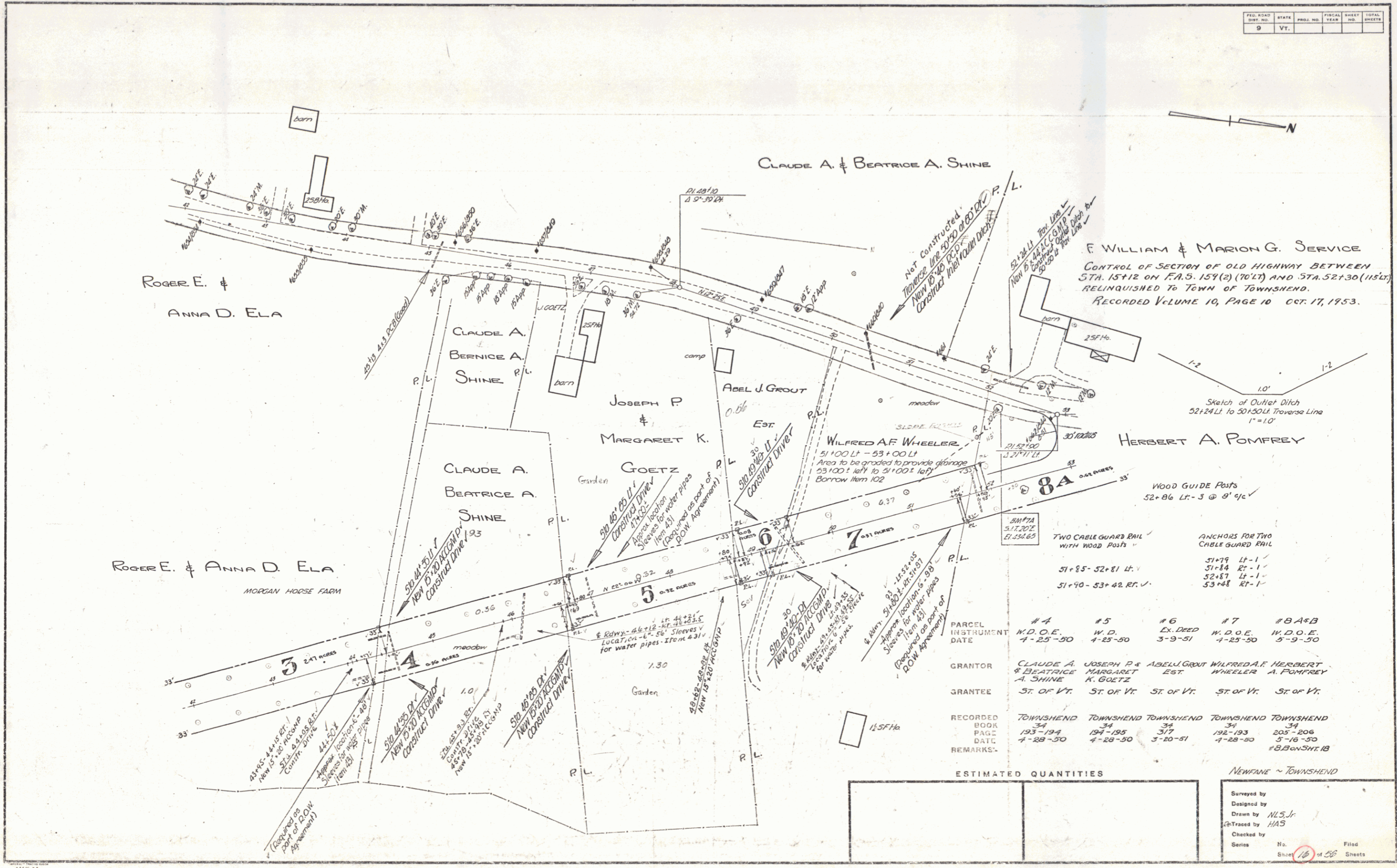
- WOOD GUIDE POSTS
- 32+60 RT - 1'
 - 32+76 RT - 1'
 - 32+92 RT - 1'
 - 33+08 RT - 1'
 - 33+24 RT - 1'
 - 33+50 RT - 2' Town Road
 - 36+50 RT & LT - 2' Culvert
 - 37+00 RT - 1'
 - 37+16 RT - 1'
 - 37+32 RT - 1'
 - 37+48 RT - 1'
 - 37+64 RT - 1'
 - 37+80 RT - 1'

ESTIMATED QUANTITIES

NEWFANE - TOWNSHEND

Surveyed by
 Designed by
 Drawn by NLS, Jr.
 Traced by HAS
 Checked by
 Series No. 14 of
 Sheet 14 of Sheets 56

FED. ROAD DIST. NO.	STATE	PROJ. NO.	FISCAL YEAR	SHEET NO.	TOTAL SHEETS
9	VT.				



F. WILLIAM & MARION G. SERVICE
 CONTROL OF SECTION OF OLD HIGHWAY BETWEEN
 STA. 15+12 ON F.A.S. 159(2) (70' LT) AND STA. 52+30 (115' LT)
 RELINQUISHED TO TOWN OF TOWNSHEND.
 RECORDED VOLUME 10, PAGE 10 OCT. 17, 1953.

Sketch of Outlet Ditch
 52+24 LT to 50+30 LT Traverse Line
 1" = 10'

WOOD GUIDE POSTS
 52+86 LT - 3 @ 9' c/c

TWO CABLE GUARD RAIL WITH WOOD POSTS
 51+85 - 52+81 LT ✓
 51+90 - 53+42 RT ✓

ANCHORS FOR TWO CABLE GUARD RAIL
 51+79 Lt-1 ✓
 51+84 Rt-1 ✓
 52+87 Lt-1 ✓
 53+48 Rt-1 ✓

PARCEL	#4	#5	#6	#7	#8 A & B
INSTRUMENT	W.D.O.E.	W.D.	EX. DEED	W.D.O.E.	W.D.O.E.
DATE	4-25-50	4-25-50	3-9-51	4-25-50	5-9-50
GRANTOR	CLAUDE A. & BEATRICE A. SHINE	JOSEPH P. & MARGARET K. GOETZ	ABEL J. GROUT	WILFRED A. F. WHEELER	HERBERT A. POMFREY
GRANTEE	ST. OF VT.	ST. OF VT.	ST. OF VT.	ST. OF VT.	ST. OF VT.
RECORDED BOOK	TOWNSHEND 34	TOWNSHEND 34	TOWNSHEND 34	TOWNSHEND 34	TOWNSHEND 34
PAGE	193-194	194-195	317	192-193	205-206
DATE	4-28-50	4-28-50	3-20-51	4-28-50	5-16-50
REMARKS					#8 B on SH. 18

ESTIMATED QUANTITIES

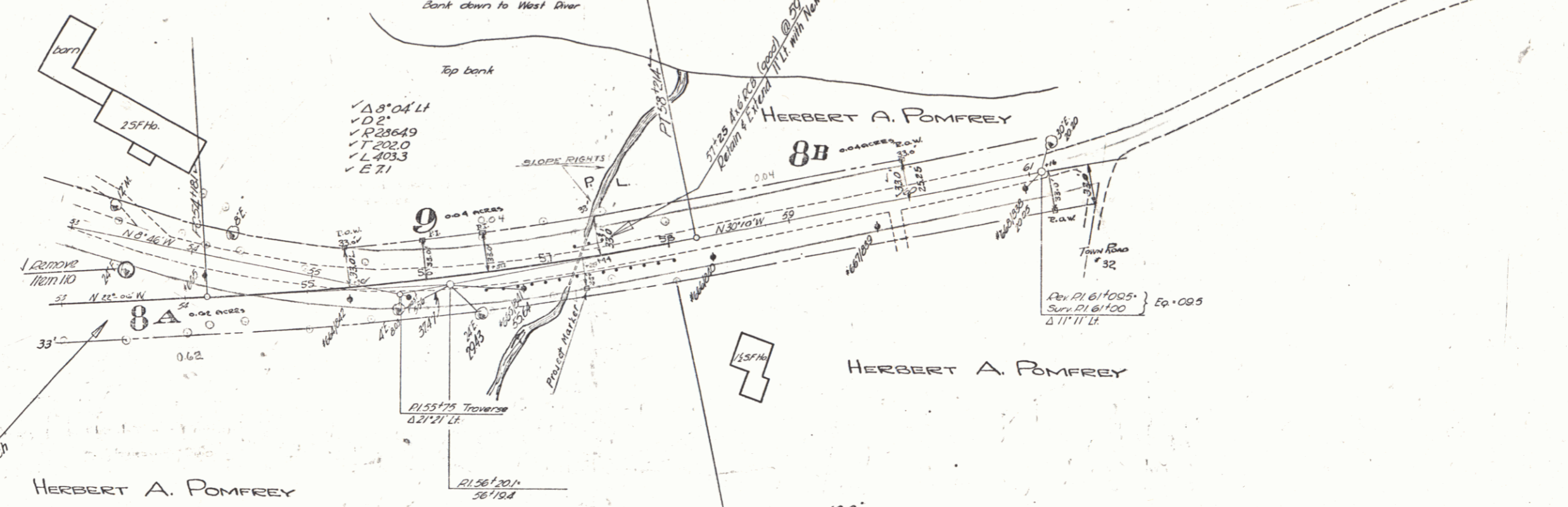
NEWFARE ~ TOWNSHEND

Surveyed by
 Designed by
 Drawn by NLS, Jr.
 Traced by HAS
 Checked by
 Series No. 16 of 26 Sheets

FED. ROAD DIST. NO.	STATE	PROJ. NO.	FISCAL YEAR	SHEET NO.	TOTAL SHEETS
9	VT.				



F. WILLIAM & MARION G. SERVICE



Sta 53+45 P.C.
Sta 53+50 P.T.
Construct Approach

TWO CABLE GAUGED RAIL WITH WOOD POSTS
 53+82-57+06 R.R.
 57+23-57+87 L.R.

ANCHORS FOR TWO CABLE GAUGED RAIL
 53+76 R.R. - 11'
 57+17 L.R. - 14'
 57+81 L.R. - 11'
 58+12 R.R. - 11'

STA 58+00.0
END PROJECT 5-159(2)

STA 355+48.0
NRS-159 (1933)

PARCEL #9
INSTRUMENT N. D. O. E.
DATE 4-25-30

GRANTOR F. WILLIAM & MARION G. SERVICE
GRANTEE ST. OF VT.

RECORDED TOWNSHEND
BOOK 34
PAGE 195-198
DATE 4-28-50
REMARKS-

ESTIMATED QUANTITIES

--	--

NEWFANE - TOWNSHEND

Surveyed by
Designed by
Drawn by NLS, Jr.
Traced by HAS
Checked by
Series No. 18
Sheet 18 of 55 Sheets

6