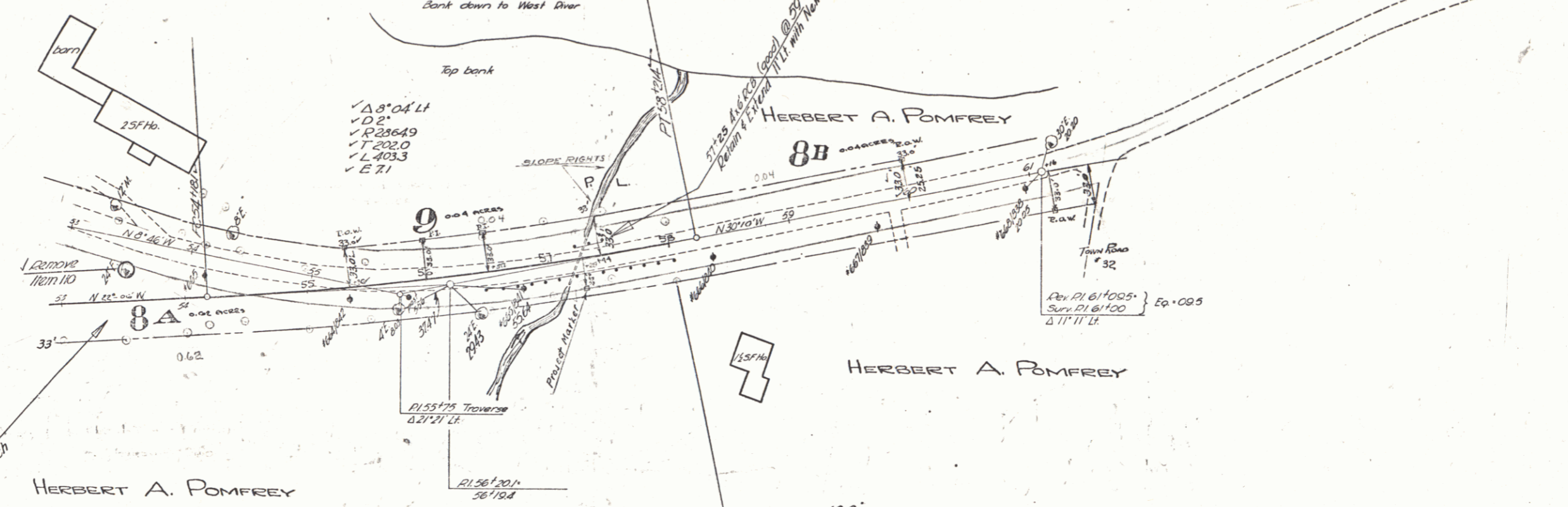


FED. ROAD DIST. NO.	STATE	PROJ. NO.	FISCAL YEAR	SHEET NO.	TOTAL SHEETS
9	VT.				



F. WILLIAM & MARION G. SERVICE



Sta 53+45 Pk. v
Sta 53+50 Pk. v
Construct Approach

TWO CABLE GATED RAIL WITH WOOD POST
 53+82-57+06 Rk-1
 57+23-57+87 Lk-1

ANCHORS FOR TWO CABLE GATED RAIL
 53+76 Rk-11
 57+17 Lk-11
 57+81 Lk-11
 58+12 Rk-11

STA 58+00.0
END PROJECT
5-159(2)

STA 355+48.0
NRS-159
(1933)

PARCEL #9
INSTRUMENT N. D. O. E.
DATE 4-25-30

GRANTOR F. WILLIAM & MARION G. SERVICE
GRANTEE ST OF VT

RECORDED TOWNSHEND
BOOK 34
PAGE 195-198
DATE 4-28-50
REMARKS-

ESTIMATED QUANTITIES

--	--

NEWFANE ~ TOWNSHEND

Surveyed by
Designed by
Drawn by NLS Jr
Traced by HAS
Checked by
Series No. 103
Sheet 13 of 55 Sheets

6