

| ESTIMATED QUANTITIES (For Bridge) |  |         |      |
|-----------------------------------|--|---------|------|
| No.                               | Item   | Quant.  | Unit |
| 106                               | Channel Excavation                               | 18040   | CX   |
| 107                               | Structure  | 696     | CX   |
| 110                               | Maintenance of Traffic for Br Proj.              | 1       | L.S. |
| 110                               | Cutting & Removing Trees                         | 18      | ea.  |
| 351                               | Bitum. Conc. Pavt for Bridge Floors              | 210     | Tons |
| 401-B                             | Conc. Class B                                    | 667     | CX   |
| 401-C                             | Conc. Class C                                    | 501     | CX   |
| 402                               | Reinforcing Steel                                | 166,140 | Lbs. |
| 403A                              | Structural Steel for Superstruct (Excl. of Rail) | 100,140 | Lbs. |
| 442                               | Removal of Present Superstructure                | 1       | L.S. |
| 301                               | Furnishing Equip. for driving Piles              | 1       | L.S. |
| 302A                              | Untreated Timber Piling                          | 6000    | L.F. |
| 302A1                             | Cut-offs Untreated Timber Piling                 | 522     | L.F. |
| 321                               | Stone Fill Modified                              | 1020    | CX   |
| 326                               | Rip Rap for Bank Protection                      | 966     | CX   |
| 372                               | Bridge Railing                                   | 804     | L.F. |

| LIST OF SHEETS (For Bridge) |  |
|-----------------------------|--|
| Sheet No.                   | Description                            |
| 12                          | Plan                                   |
| 13                          | Profile                                |
| 20                          | Preliminary Information Sheet          |
| 21                          | Plan & Sections of Superstructure      |
| 22                          | Plan & Elevations of Substructure      |
| 23                          | Abutments 1 & 2                        |
| 24                          | Piers 1, 2 & 3                         |
| 25                          | Superstructure                         |
| 26                          | Bearing Devices                        |
| 27                          | Details of Cover & Splice Plates       |
| 28                          | Expansion Plate Details                |
| 29                          | Curb & Soil Details                    |
| 30                          | Approach Slab                          |
| 31-35                       | Channel Sections (6 Sheets)            |
| 39                          | Std. Sht. SB 20, Details, D.E.F.W.S.K. |
| 33                          | SB 14, Barricades, Signs, & Lights     |
| 31                          | Std. Sht. SB 2, Detail S 206           |
| 36A                         | Earthwork Sheet - Bridge Quantities    |

PARCEL INSTRUMENT #1 CONDEMNATION W.D.O.E. DATE 3-27-30 #2 5-2-30

GRANTOR: RAY W. & PAULINE B. DEANE CHRISTOPH STUMPE - CASTOU

GRANTEE: ST. OF VT. ST. OF VT.

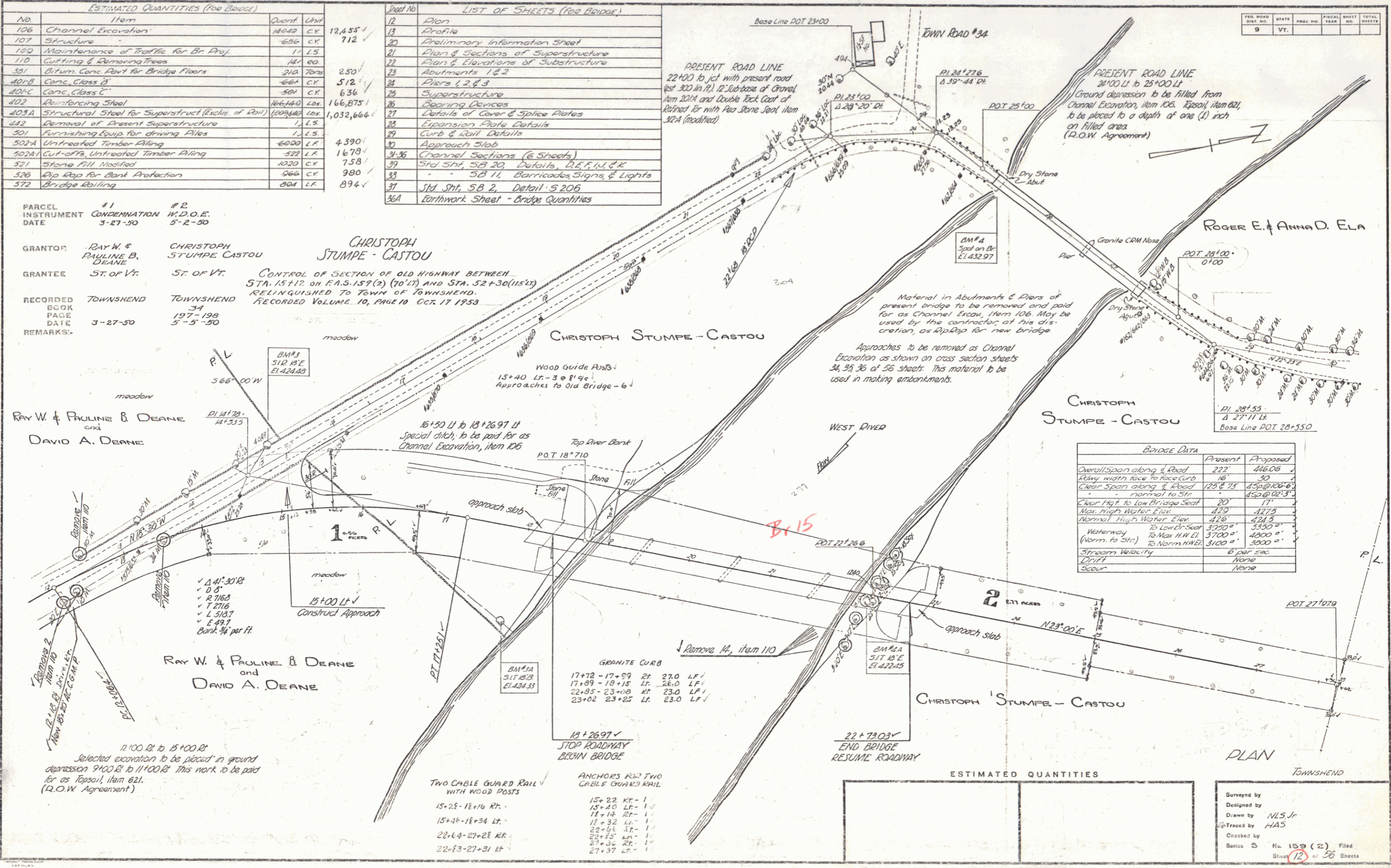
RECORDED TOWNSHEND TOWNSHEND

BOOK PAGE 34

DATE 3-27-30 5-5-30

REMARKS:

CONTROL OF SECTION OF OLD HIGHWAY BETWEEN STA. 15+12 ON P.A.S. 157(2) (10' LT) AND STA. 52+30 (115' LT) RELINQUISHED TO TOWN OF TOWNSHEND. RECORDED VOLUME 10, PAGE 10 OCT 17 1933



| BRIDGE DATA                               |               |                |
|---|---------------|----------------|
|   | Present       | Proposed       |
| Overall Span along & Road                 | 222'          | 416.08'        |
| Clear span from face to face curb         | 18'           | 30'            |
| Clear span along & Road                   | 125' ± 7 1/2" | 450' ± 0' ± 6" |
| normal to Str.                            |               | 450' ± 0' ± 3" |
| Clear Hgt. to low Bridge Seat             | 20'           | 17'            |
| Max. High Water Elev.                     | 429'          | 427.5'         |
| Normal High Water Elev.                   | 426'          | 424.5'         |
| Waterway to Low Cr. Seat                  | 3900"         | 5350"          |
| Waterway (Norm. to Str.) to Max. H.W. El. | 3700"         | 4800"          |
| Stream Velocity                           | 3100"         | 3800"          |
| Scour                                     | None          | None           |

| ESTIMATED QUANTITIES                 |                |
|--------------------------------------|----------------|
| Two Cable Guard Rail with Wood Posts |                |
| 15+25-18+16 R.F.                     | 15+22 R.F. - 1 |
| 15+41-18+34 L.F.                     | 15+40 L.F. - 1 |
| 22+64-27+28 R.F.                     | 18+32 L.F. - 1 |
| 22+23-27+31 L.F.                     | 22+54 L.F. - 1 |
|                                      | 22+15 R.F. - 1 |
|                                      | 27+37 L.F. - 1 |

Surveyed by  
Designed by  
Drawn by NLS Jr.  
Checked by HAS  
Series 5 No. 159 (2) Filed  
Sheet 12 of 36 Sheets