

①

1

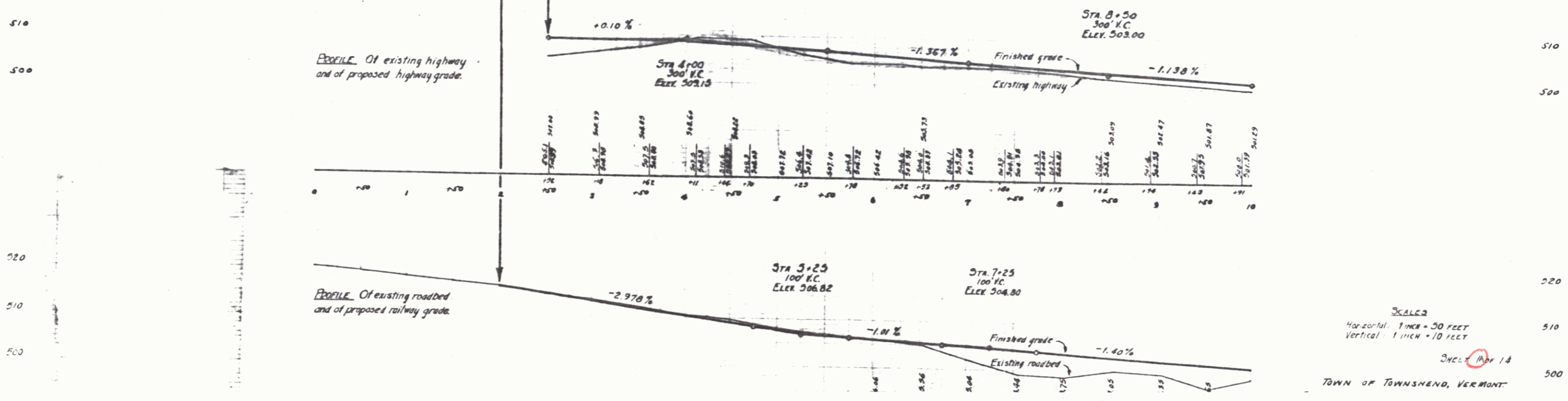
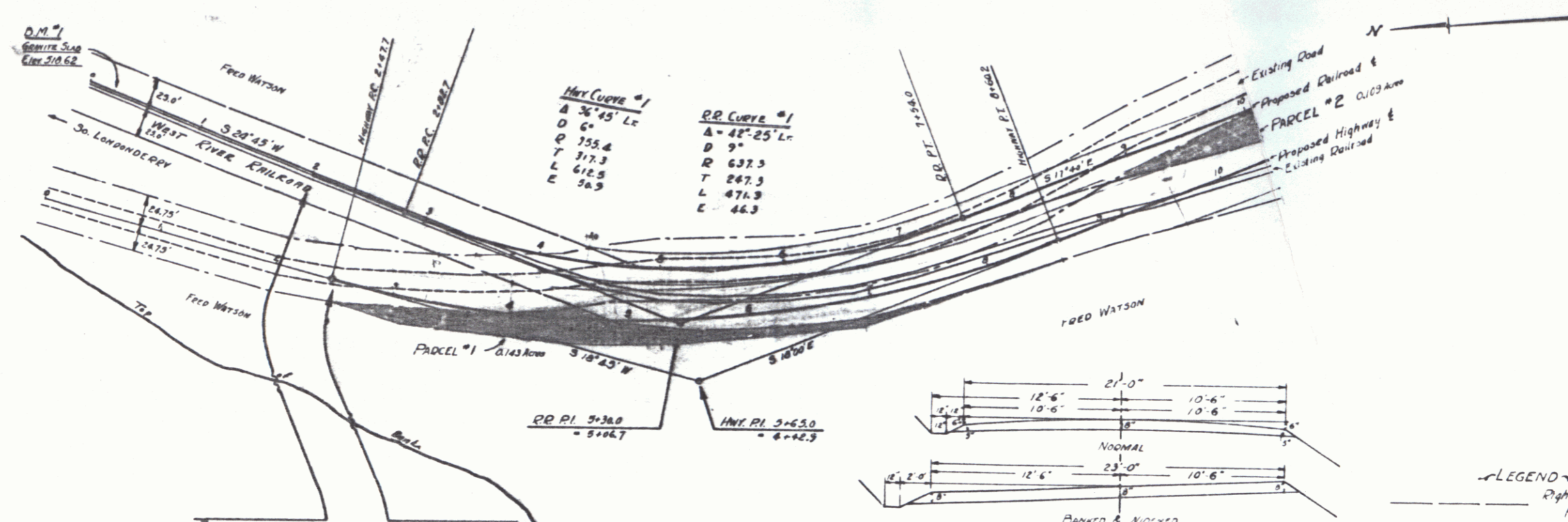
WOOD GUARD RAIL PROVIDED
 CULVERT STATION LEFT RIGHT
 6+32 24 24

CABLE GUARD RAIL PROVIDED
 STATION TO STATION LEFT RIGHT
 2+15 3+55 30

NEW DECK CONG. PIPE CULVERTS PROVIDED
 STATION DIAM. LENGTH CONC. A STEEL
 6+32 15" 36' 23 cu yd 33"

NEW DECK CONG. PIPE CULVERTS PROVIDED FOR R.R.
 STATION DIAM. LENGTH CONC. A STEEL
 6+08 12" 16' 17 cu yd 33"

- INDEX OF SHEETS
- 1-2 LAYOUTS
 - 3-12 CROSS SECTIONS
 - 13 STANDARDS FOR PIPE CULVERTS
 - 14 STANDARDS FOR GUARD RAIL, ETC.



LEGEND

- Right of Way Limits of Present Railroad
- Right of Way Limits of Existing Highway

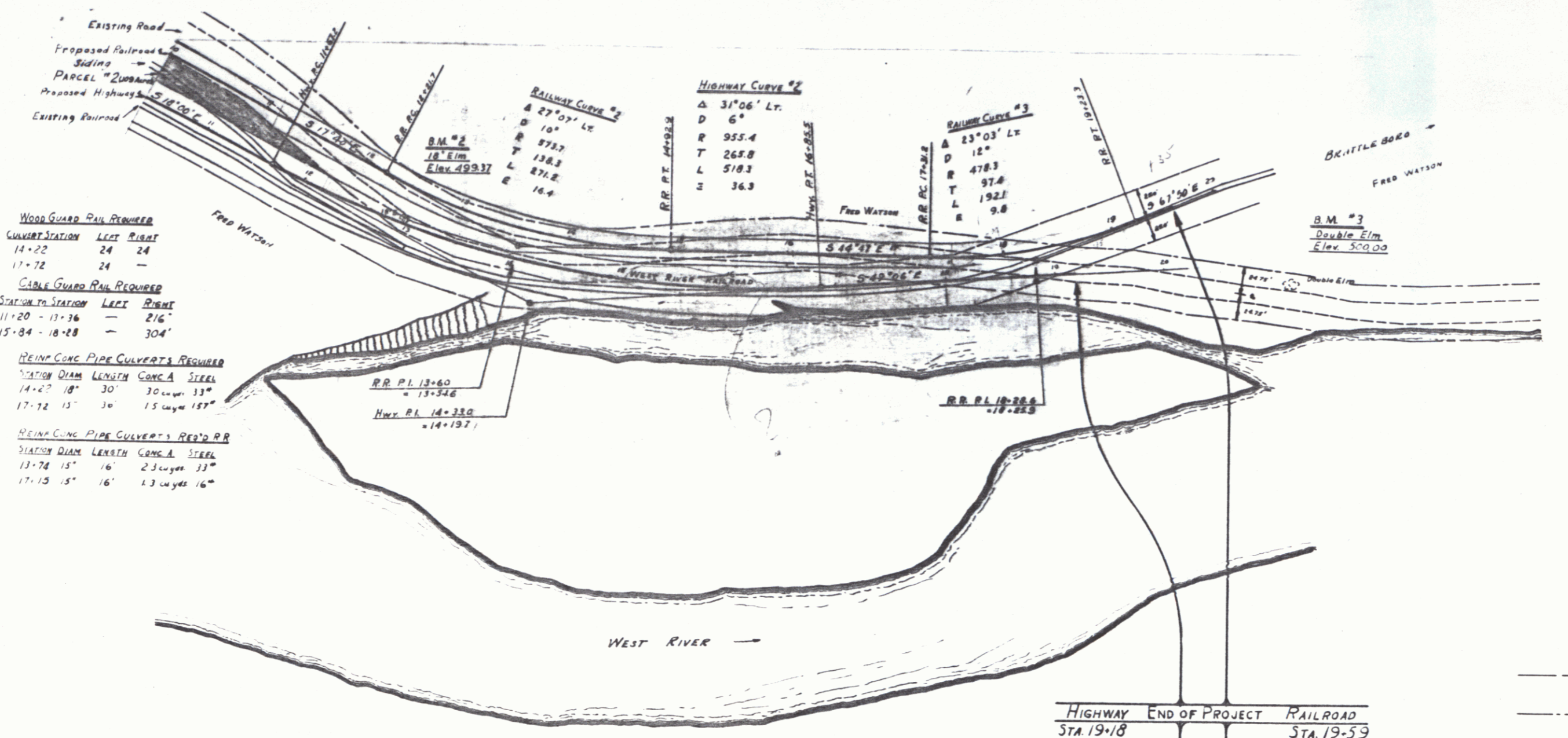
SCALE: 1 INCH = 50 FEET

SCALES

Horizontal: 1 INCH = 50 FEET
 Vertical: 1 INCH = 10 FEET

SHEET 18 OF 18

TOWN OF TOWNSEND, VERMONT



WOOD GUARD RAIL REQUIRED

CULVERT STATION	LEFT	RIGHT
14+22	24	24
17+72	24	—

CABLE GUARD RAIL REQUIRED

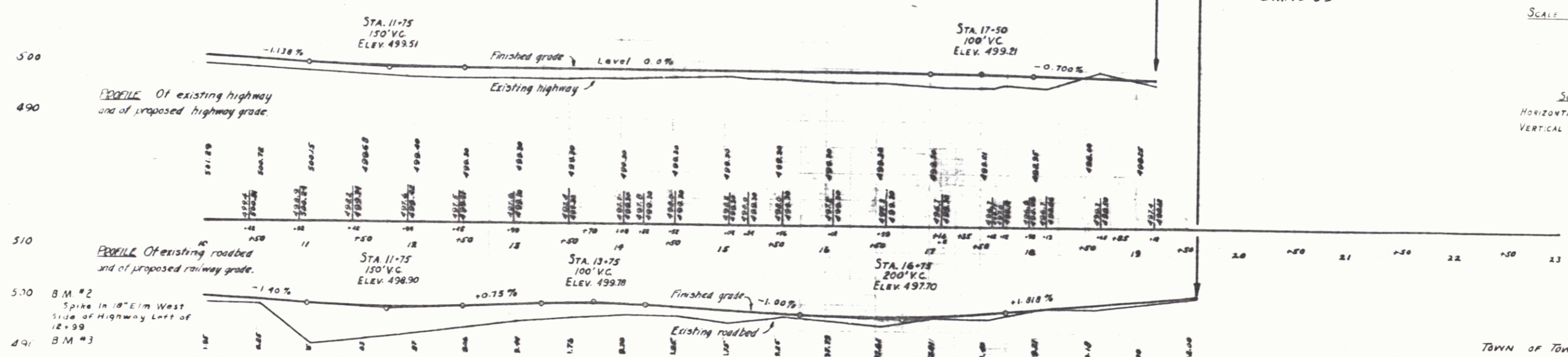
STATION TO STATION	LEFT	RIGHT
11+20 - 13+36	—	216'
15+84 - 18+28	—	304'

REIN. CONC. PIPE CULVERTS REQUIRED

STATION	DIAM.	LENGTH	CONC. A	STEEL
14+22	18"	30'	30 layers	33"
17+72	15"	30'	15 layers	15"

REIN. CONC. PIPE CULVERTS REQ'D RR

STATION	DIAM.	LENGTH	CONC. A	STEEL
13+78	15"	16'	2.5 layers	33"
17+15	15"	16'	1.3 layers	16"



LEGEND

--- Right of Way Limits of Present Railroad
 --- Right of Way Limits of Existing Highway

SCALE 1 INCH = 50 FEET

SCALES
 HORIZONTAL 1 INCH = 50 FEET
 VERTICAL 1 INCH = 10 FEET

SHEET 2 OF 14
 TOWN OF TOWNSEND VERMONT