

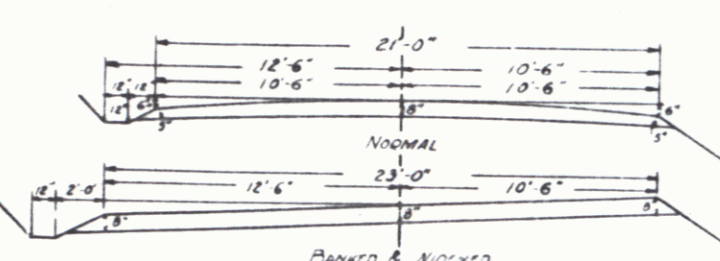
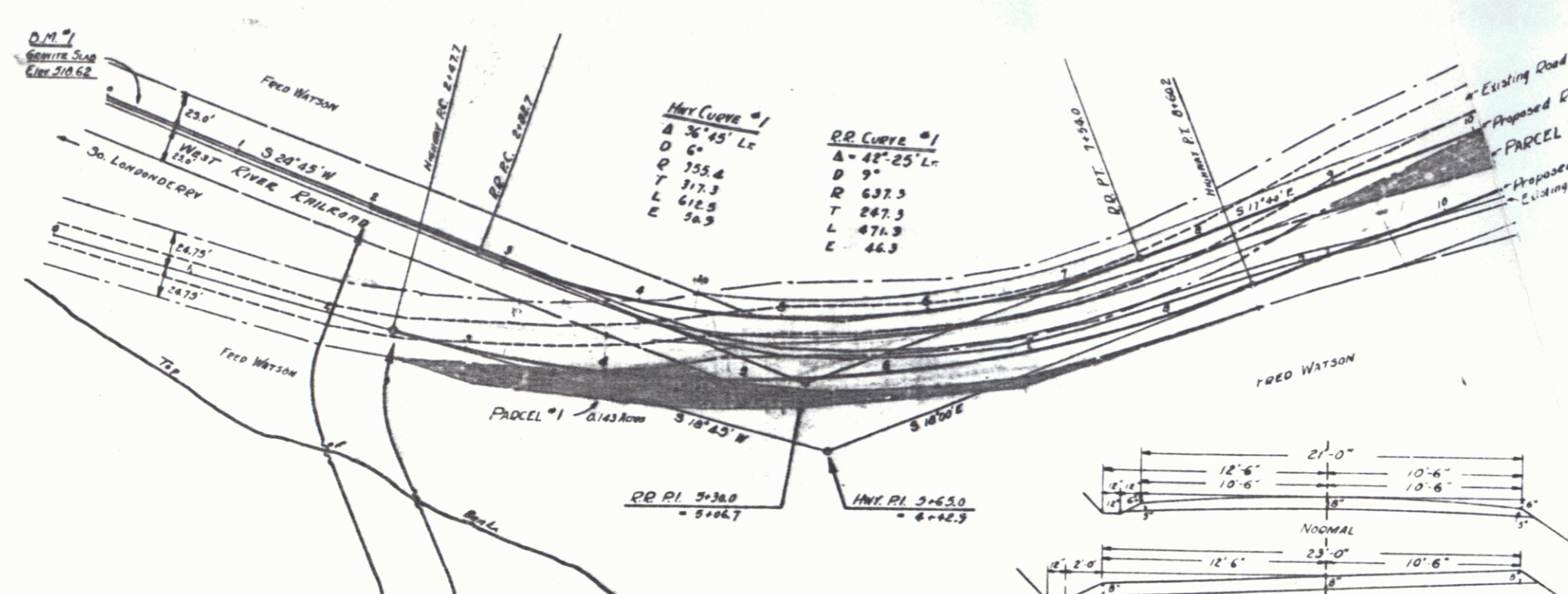
WOOD GUARD RAIL PROVIDED
 CULVERT STATION LEFT RIGHT
 6+32 24 24

CABLE GUARD RAIL PROVIDED
 STATION TO STATION LEFT RIGHT
 2+15 3+55 30

NEW DECK CONG. PIPE CULVERTS PROVIDED
 STATION DIAM. LENGTH CONC. A STEEL
 6+32 15" 36' 23 cu yd 33"

NEW DECK CONG. PIPE CULVERTS PROVIDED FOR R.R.
 STATION DIAM. LENGTH CONC. A STEEL
 6+08 12" 16' 17 cu yd 33"

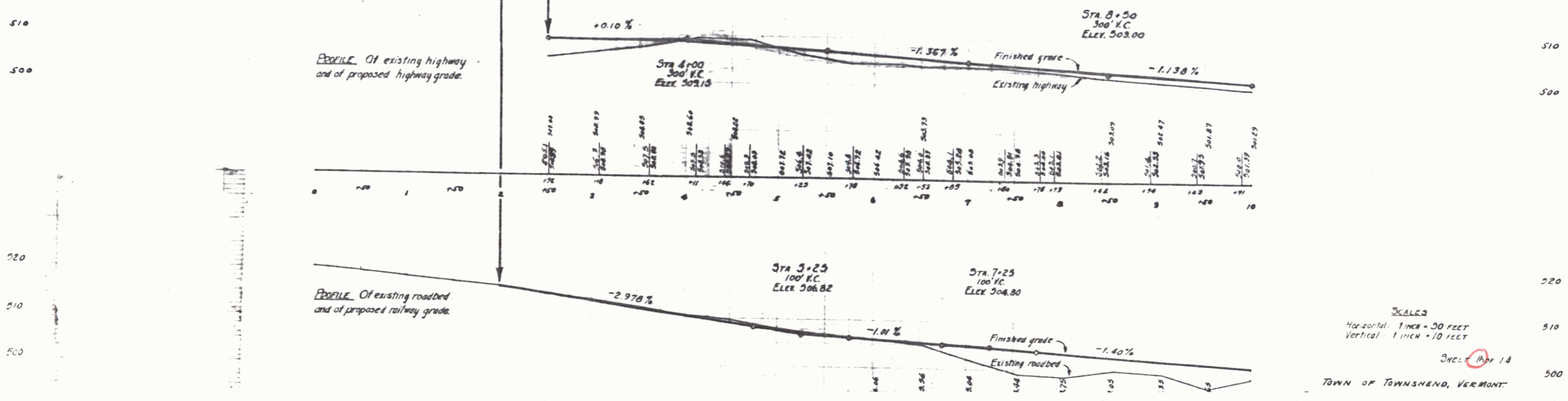
- INDEX OF SHEETS
- 1-2 LAYOUTS
 - 3-12 CROSS SECTIONS
 - 13 STANDARDS FOR PIPE CULVERTS
 - 14 STANDARDS FOR GUARD RAIL, ETC.



LEGEND

- Right of Way Limits of Present Railroad
- Right of Way Limits of Existing Highway

SCALE: 1 INCH = 50 FEET



SCALES

Horizontal: 1 INCH = 50 FEET
 Vertical: 1 INCH = 10 FEET

SHEET 108 OF 14

TOWN OF TOWNSEND, VERMONT