

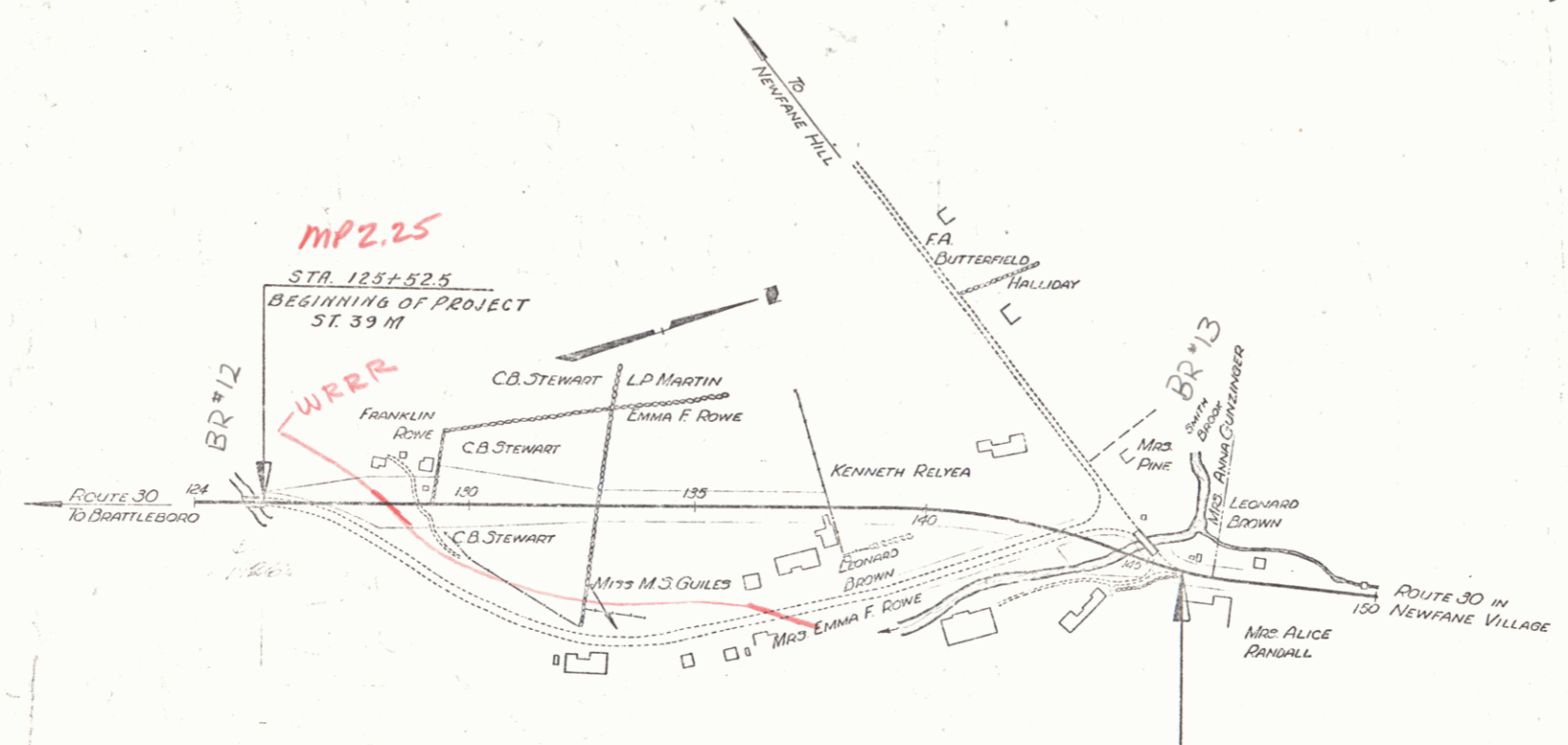
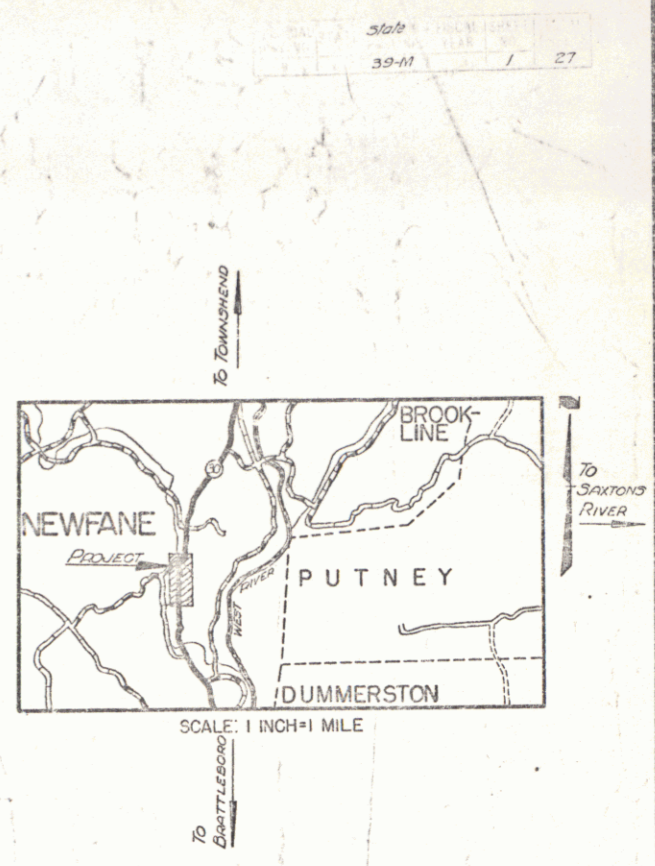
PROJECT	NEWFANE	LENGTH	0.383
NUMBER	39-M		
DATE	1965		
CONTRACTOR	W. J. RICHARDS	YEAR 19	65
LOCATION	Beginning at the northerly end of the concrete "T" beam bridge in Newfane Village and extending northeasterly 0.383 miles		
	16		
	17		
	18		
	19-27 CROSS-SECTIONS		

- 3-11 BARRICADES, SIGNS & LIGHTS
- B-20 DETAILS A, H, & K
- 3-28 PIPE CULVERTS
- 3-33 GUARD RAIL
- 3-39A BOUNDARY MARKERS
- 1 CONC. CURB & GUTTER
- 0 BARRICADES, SIGNS & LIGHTS
- 5-41 ROUNDING OF SLOPES

TOWN OF NEWFANE VERMONT ROUTE 30

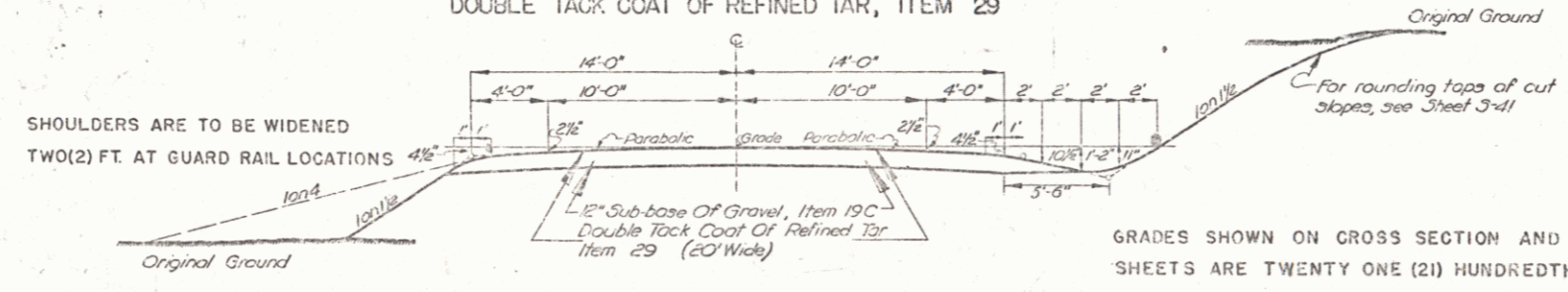
BEGINNING AT THE NORTHERLY END OF THE CONCRETE "T" BEAM BRIDGE IN NEWFANE VILLAGE AND EXTENDING NORTHEASTERLY 0.383 MILES

LENGTH OF ROADWAY 1953.5 FT. = 0.370 MILES
 LENGTH OF BRIDGE 69.0 " = 0.013 MILES
 LENGTH OF CONTRACT 2022.5 " = 0.383 MILES



TYPICAL SECTION

GRADING, DRAINAGE, BASE, GUARD RAIL AND DOUBLE TACK COAT OF REFINED TAR, ITEM 29



NORMAL SECTION

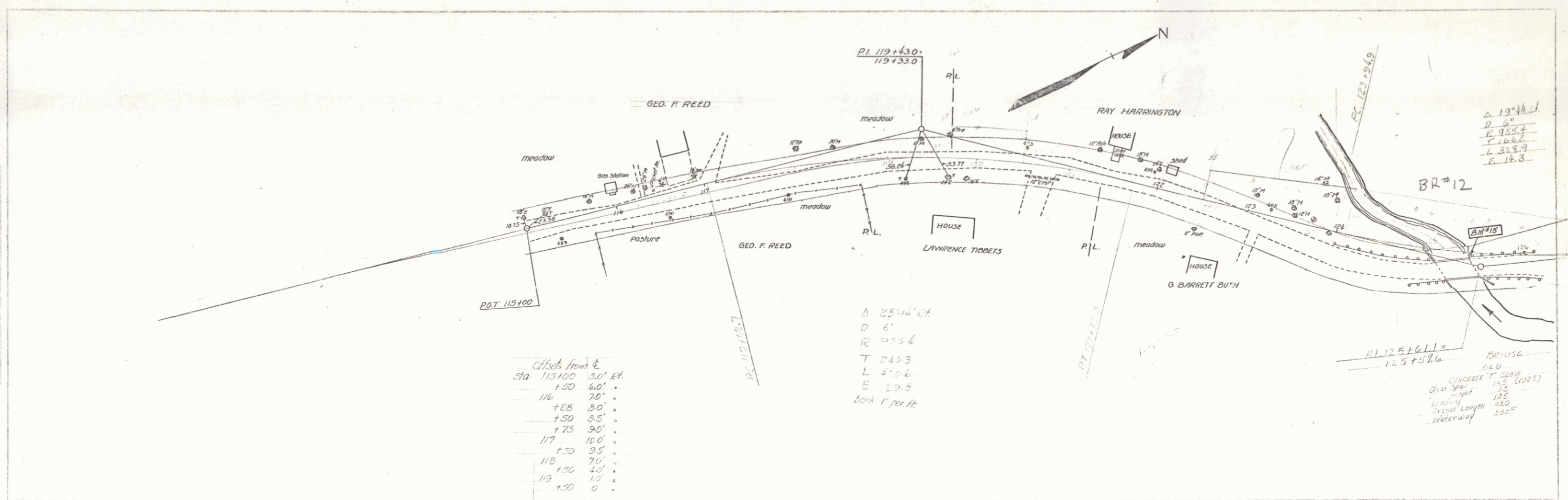
GRADES SHOWN ON CROSS SECTION AND EARTHWORK SHEETS ARE TWENTY ONE (21) HUNDREDTHS HIGHER THAN TYPICAL SECTION

P. in #00R351

APPROVED: *[Signature]*
 COMMISSIONER OF HIGHWAYS
 SUBMITTED BY ORDER OF THE STATE HIGHWAY BOARD

STEARNS R. JENKINS

TITLE	SCALES		NEWFANE		
	TYPICAL	1" = 200'		Surveyed by G. Low	
	PLAN	1" = 5'			Designed by A.J. Rungt
	PROFILE	HORIZONTAL 1" = 20'			
CROSS SECTIONS	VERTICAL	1" = 10'	Traced by J.C.		
				Checked by <i>[Signature]</i>	
Series			No. SF 39-M		
			Sheet 1 of 27 Sheets		



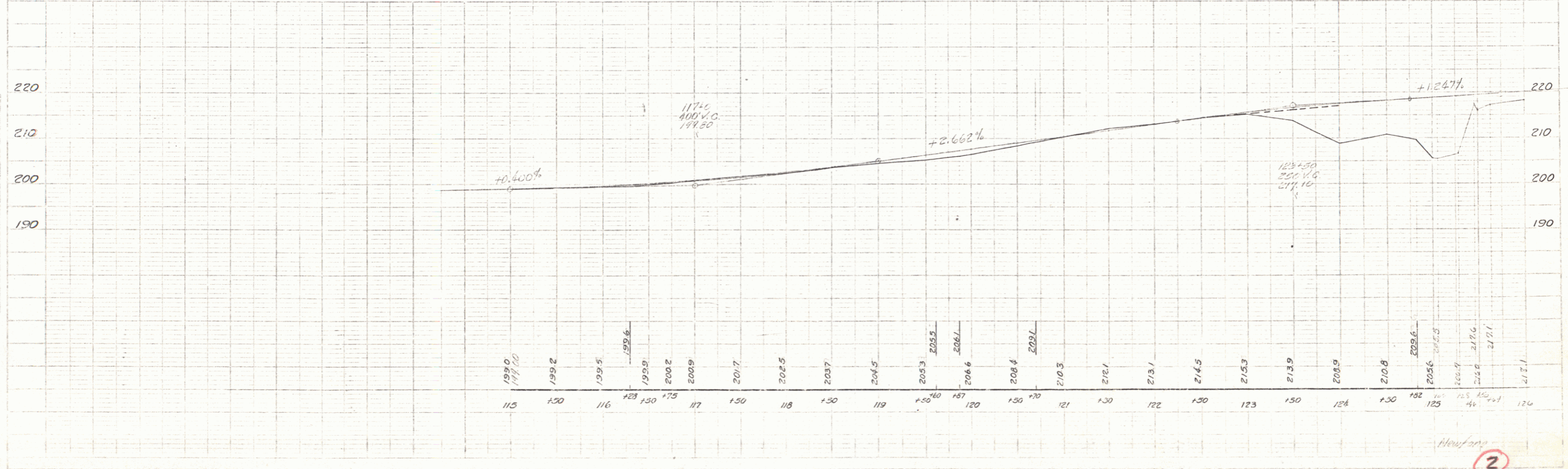
Offsets from E

Sta	115+00	5.0' offset
	+50	6.0'
	+60	7.0'
	+70	8.0'
	+80	9.0'
	+90	10.0'
	+100	9.5'
	+110	7.0'
	+120	4.0'
	+130	1.0'
	+140	0'

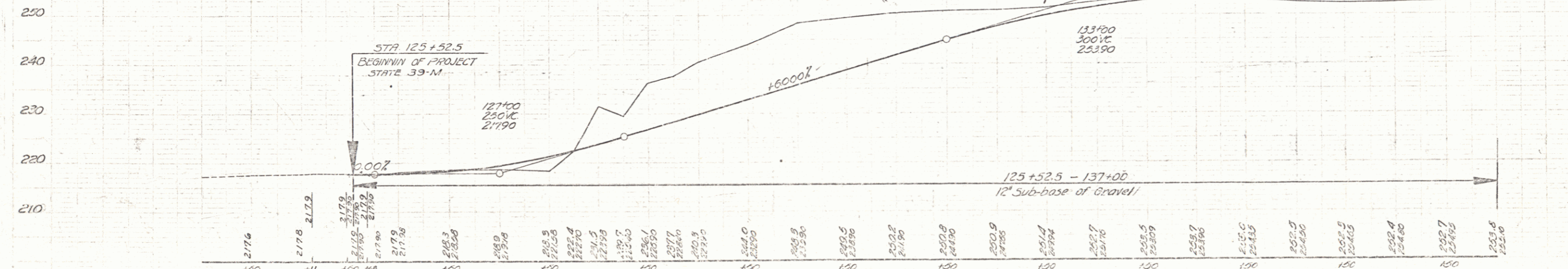
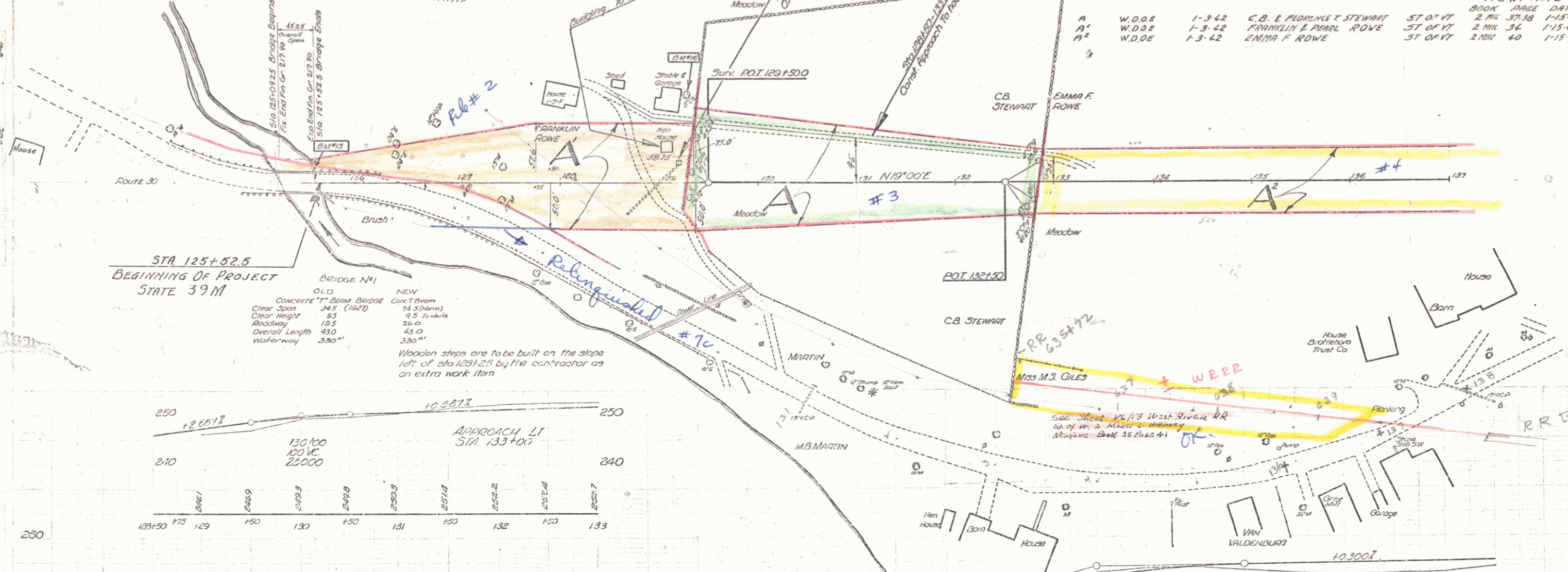
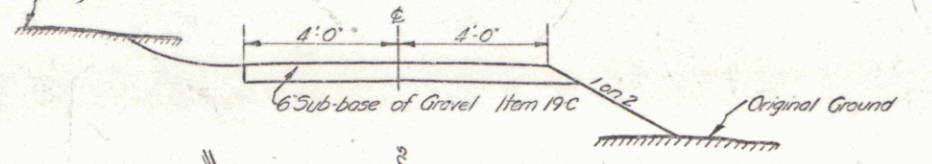
Δ 25'-14" offset
 D 6'
 R 455.4
 T 242.3
 L 4'-0.6"
 E 29.5
 bank 1' per ft.

Δ 19'-4 1/2"
 D 6'
 R 355.4
 T 166.6
 L 323.9
 E 14.3

BRIDGE
 OLD
 CONCRETE T-PIERS
 Span 34'-0"
 Height 12'-5"
 Length 45'-0"
 Waterway 33'-0"

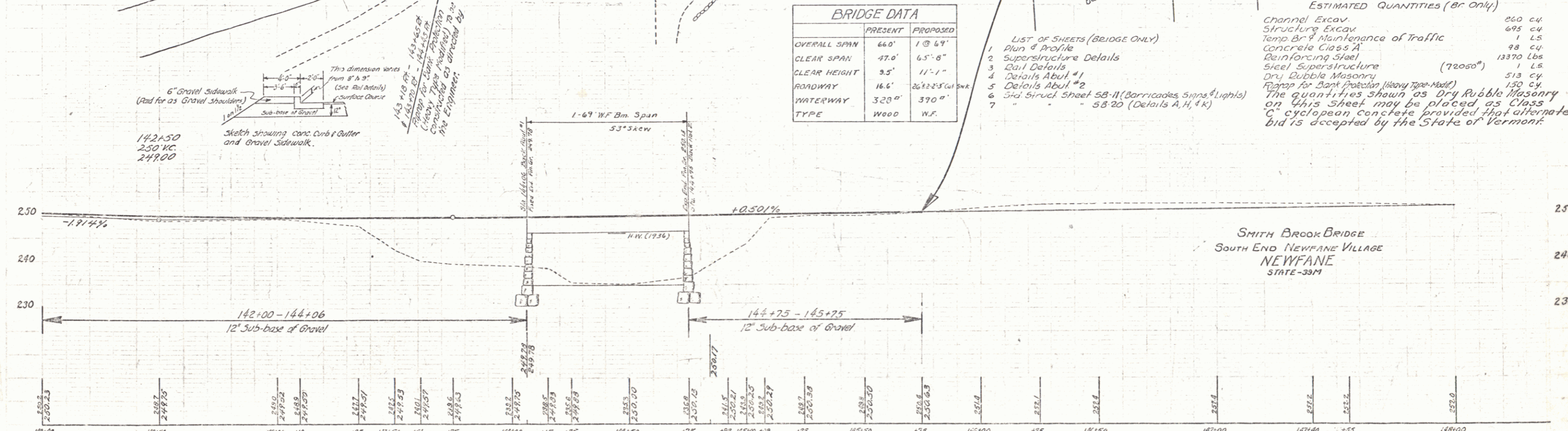
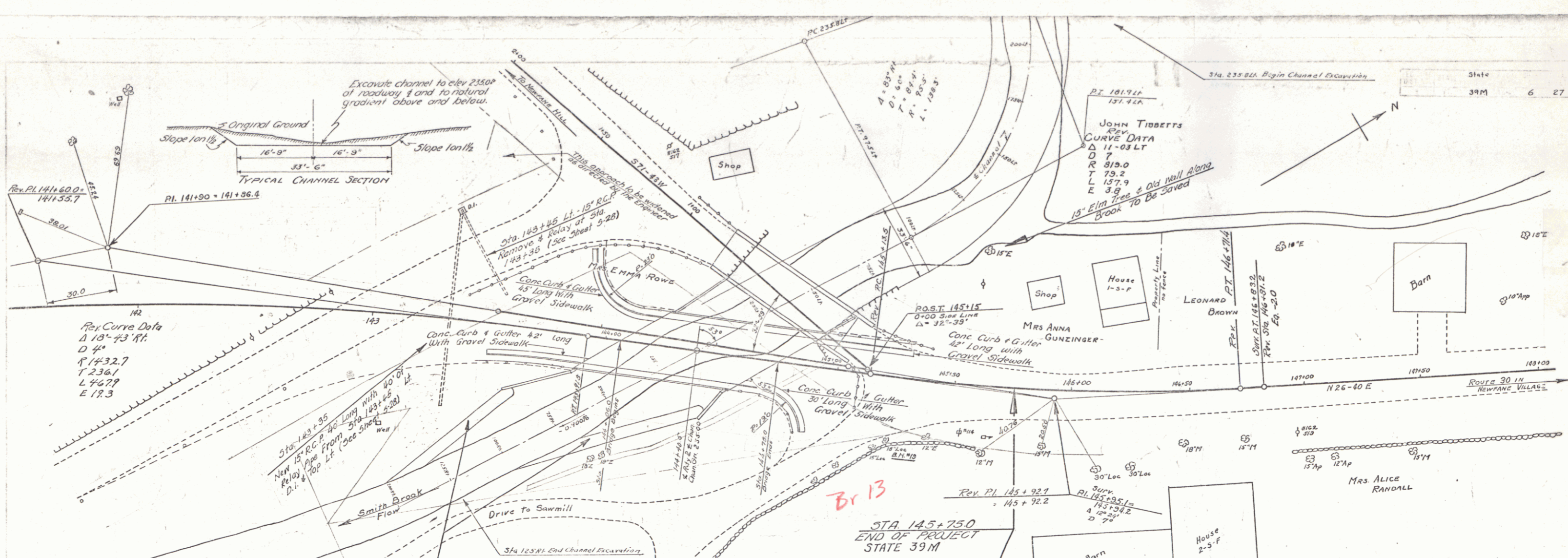


TYPICAL SECTION FOR APPROACH LT 133+00



PARCEL INSTRUMENT	DATE	GRANTOR	GRANTEE	RECORDED NEWFANE	REMARKS
A	W.D.O.E 1-3-42	C.B. & FLORENCE T. STEWART	ST OF VT	BOOK PAGE DATE	
A'	W.D.O.E 1-3-42	FRANKLIN & PEARL ROWE	ST OF VT	2 MK 36 1-15-42	
A''	W.D.O.E 1-3-42	EMMA F. ROWE	ST OF VT	2 MK 40 1-15-42	

124 B.M. 15 - 300' on conc. bridge rail 10' W of Sta 120+146 Elev 221.75
 B.M. 16 - 51' 0" Cherry 65' W of Sta 120+34 Elev 247.50
 B.M. 17 - 51' 12" Cherry 229' W of Sta 121+75 Elev 250.01



ESTIMATED QUANTITIES (BRIDGE ONLY)

Channel Excav.	260 cu
Structure Excav.	695 cu
Temp Br & Maintenance of Traffic	1 LS
Concrete Class A	98 cu
Reinforcing Steel	13370 lbs
Steel Superstructure	1 LS
Dry Rubble Masonry	513 cy
Plan for Bank Protection (Heavy Type-Mat)	150 cy
The quantities shown as Dry Rubble Masonry on this sheet may be placed as Class C cyalopagan concrete provided that alternate bid is accepted by the State of Vermont.	

- LIST OF SHEETS (BRIDGE ONLY)
- Plan & Profile
 - Superstructure Details
 - Abut. Details
 - Details Abut. #1
 - Details Abut. #2
 - 3rd. Struct. Sheet 58-11 (Barricades Signs & Lights)
 - 58-20 (Details A, H, K)

SMITH BROOK BRIDGE
SOUTH END NEWFANE VILLAGE
NEWFANE
STATE-39M