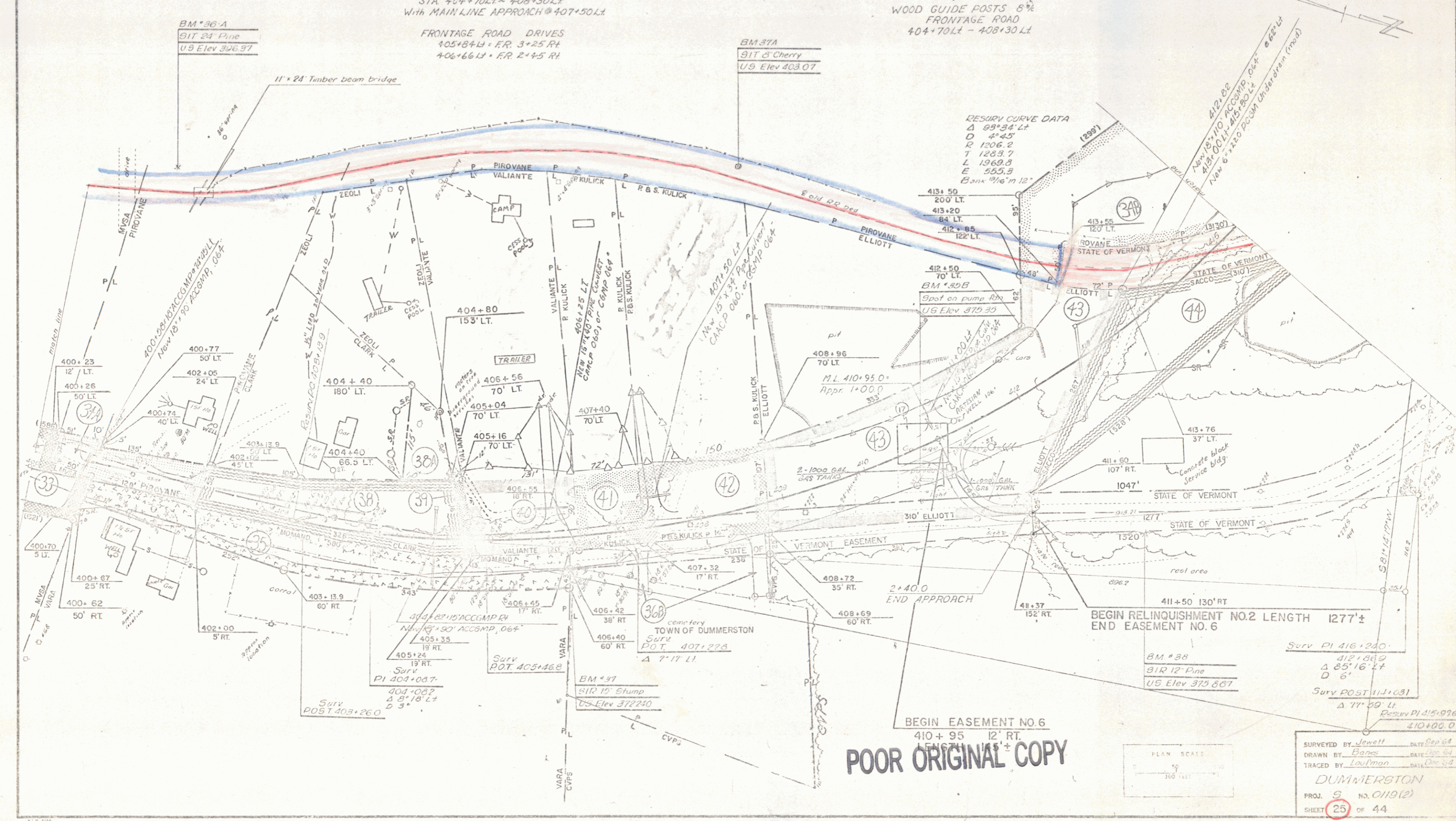


CURB L ^t 400+00-400+22 400+62-401+98 402+16-404+00	CONSTRUCT DRIVE L ^t 400+4E 402+08 411+00 406+25	CONSTRUCT APPROACH L ^t 410+95	DEMOLITION AND DISPOSAL OF BUILDING 410+50 & (417)	2" TOPSOIL L ^t 400+00-400+22 400+62-401+98 402+16-404+00	EXCAVATION AND REMOVAL OF ROAD SURFACES & PAVEMENTS L ^t 408+00-411+50	PAVE SHOULDER FULL WIDTH WITH ITEM 361 (MOD) L ^t 400+00-404+00
--	--	---	--	--	---	--

CONSTRUCT FRONTAGE ROAD
STA 404+70 LT - 408+30 LT
With MAIN LINE APPROACH @ 407+50 LT

FRONTAGE ROAD DRIVES
405+84 LT - FR 3'x25 FT
406+66 LT - FR 2'x45 FT

WOOD GUIDE POSTS 8"
FRONTAGE ROAD
404+70 LT - 408+30 LT



RESURV CURVE DATA
Δ 93°34' Lt
D 4°45'
R 1206.2
T 1209.7
L 1969.8
E 555.3
Bank 9'6" to 12'

POOR ORIGINAL COPY



SURVEYED BY Jewett DATE Dec 54
DRAWN BY Barnes DATE Jan 54
TRACED BY Loufman DATE Dec 54
DUMMERSTON
PROJ. 9 NO. 0119(2)
SHEET 25 OF 44