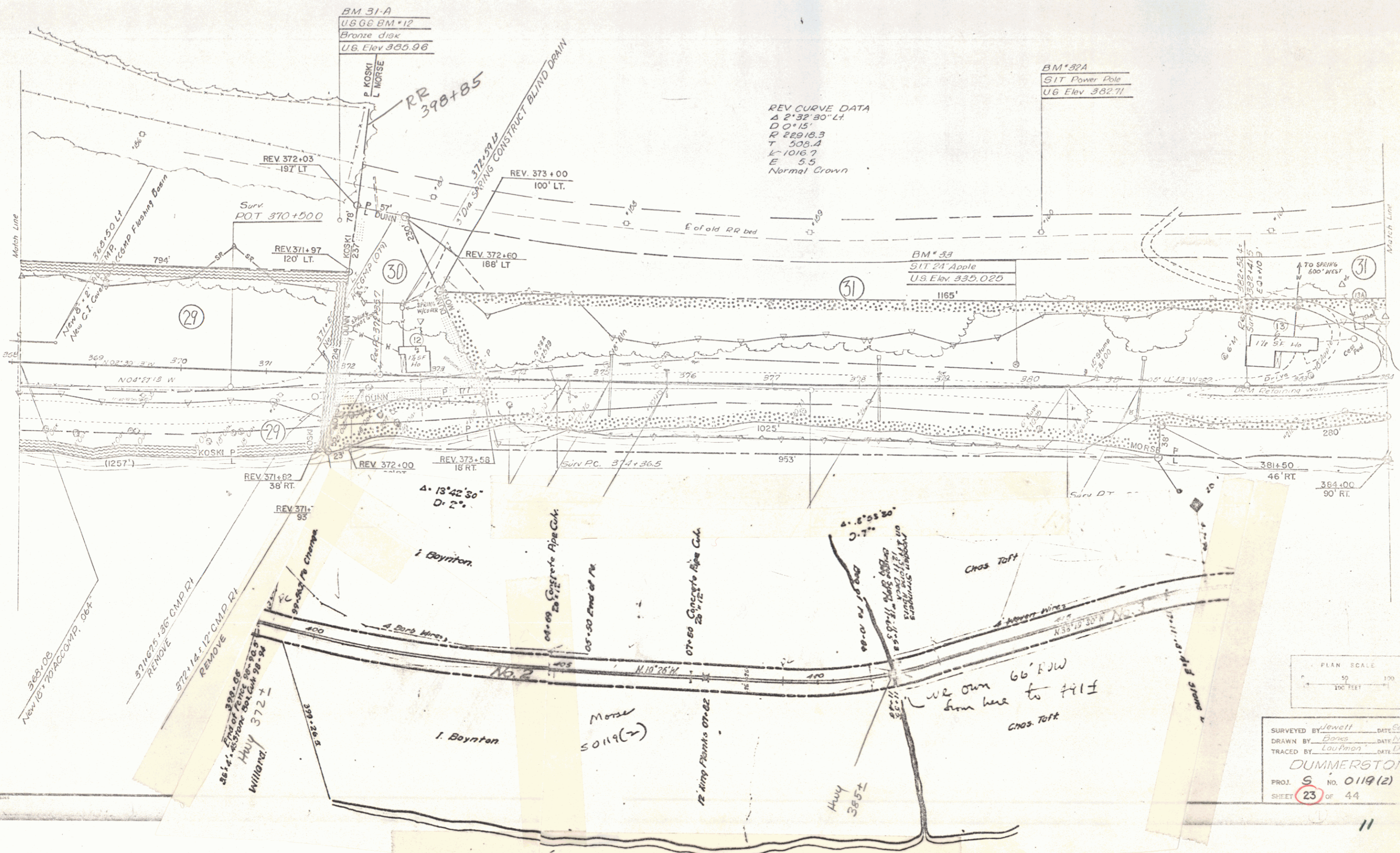
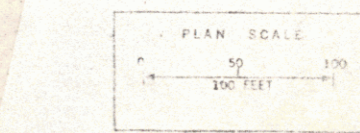


DEMOLITION AND DISPOSAL OF BUILDING
 THREE CABLE GUARD RAIL WITH STEEL POSTS
 STONE FILL FOR SLOPE PROTECTION (Heavy Type)
 UNCLASSIFIED CHANNEL EXCAVATION
 CONSTRUCT DRIVE
 DRILLING AND BLASTING OF SOLID ROCK SUBGRADE
 EXCAVATION AND REMOVAL OF ROAD SURFACES and/or PAVEMENTS



REV CURVE DATA
 Δ 2° 32' 30" LT
 D 0° 15'
 R 22918.3
 T 509.4
 L 1016.7
 E 5.5
 Normal Crown



SURVEYED BY Jewell DATE 5/21/68
 DRAWN BY Bones DATE 10/15/68
 TRACED BY Loutman DATE 12/1/68
DUMMERSTON
 PROJ. S NO. 0119(2)
 SHEET 23 OF 44