

INDEX OF SHEETS

SHEET NO. 1	TITLE PAGE
2	TYPICAL CROSS-SECTION OF IMPROVEMENT (BITUMINOUS CONCRETE PAVEMENT FOR BRIDGE FLOORS, ITEM 581)
3	BANKING AND WIDENING TABLES
4	QUANTITY SHEET (ITEMS)
5	EARTHWORK SHEET (BRIDGE)
6	EARTHWORK SHEET (ROADWAY)
7	PRELIMINARY INFORMATION SHEET
8	PLAN
9	PROFILE
10	BRIDGE PLAN AND SECTION
11	ABUTMENTS NOS. 1 AND 2
12	STANDARD STRUCTURE SHEET SB-30 (H20-1 SUPERSTRUCTURE)
13	STANDARD STRUCTURE SHEET SB-5-51 (BRIDGE RAILING DETAILS)
14	STANDARD STRUCTURE SHEET SB 20 (DETAILS A, B, C, K, L)
15	STANDARD STRUCTURE SHEET SB 11 (BARRIAGES, SIGNS AND LIGHTS (BRIDGE))
16	STANDARD STRUCTURE SHEET (CONSTRUCTION DETAILS)
17	STANDARD STRUCTURE SHEET S 45-45 TWO DALE GUARD RAIL
19	STANDARD STRUCTURE SHEET S 40 (BARRIAGES, SIGNS AND LIGHTS (ROADWAY))
20-23	CHANNEL SECTIONS
24-25	CROSS SECTIONS

STANDARD STRUCTURE SHEETS APPROVED BY THE CHIEF ENGINEER, VERMONT STATE DEPARTMENT OF HIGHWAYS.

S 40 JUNE 10, 1950

STATE OF VERMONT
STATE HIGHWAY DEPARTMENT

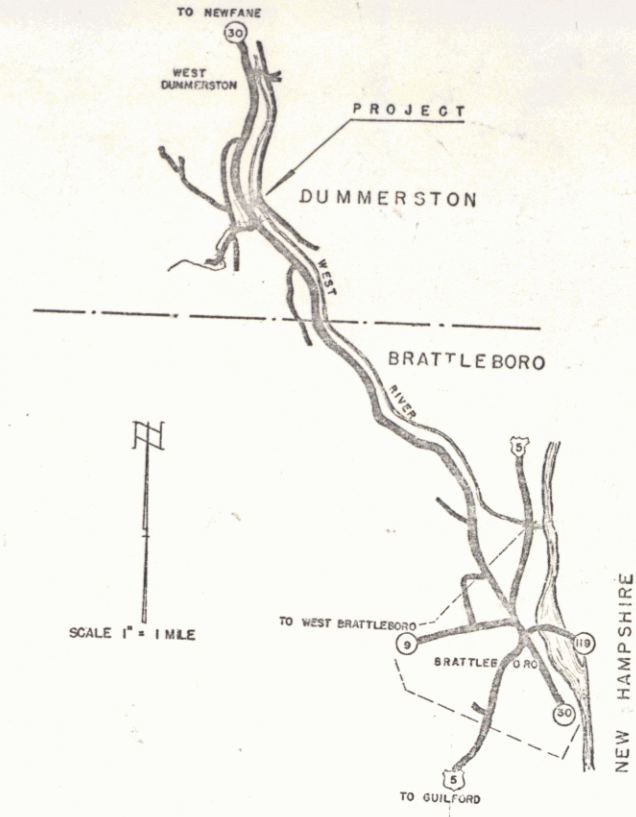
PLAN AND PROFILE OF PROPOSED
STATE HIGHWAY

TOWN OF DUMMERSTON
COUNTY OF WINDHAM
VERMONT ROUTE 30
BRATTLEBORO-NEWFANE ROAD
BRIDGE OVER STICKNEY BROOK

BEGINNING AT A POINT APPROXIMATELY 1.38 MILES NORTHERLY OF THE BRATTLEBORO-DUMMERSTON TOWN LINE AND EXTENDING SOUTHERLY 400.0 FEET.

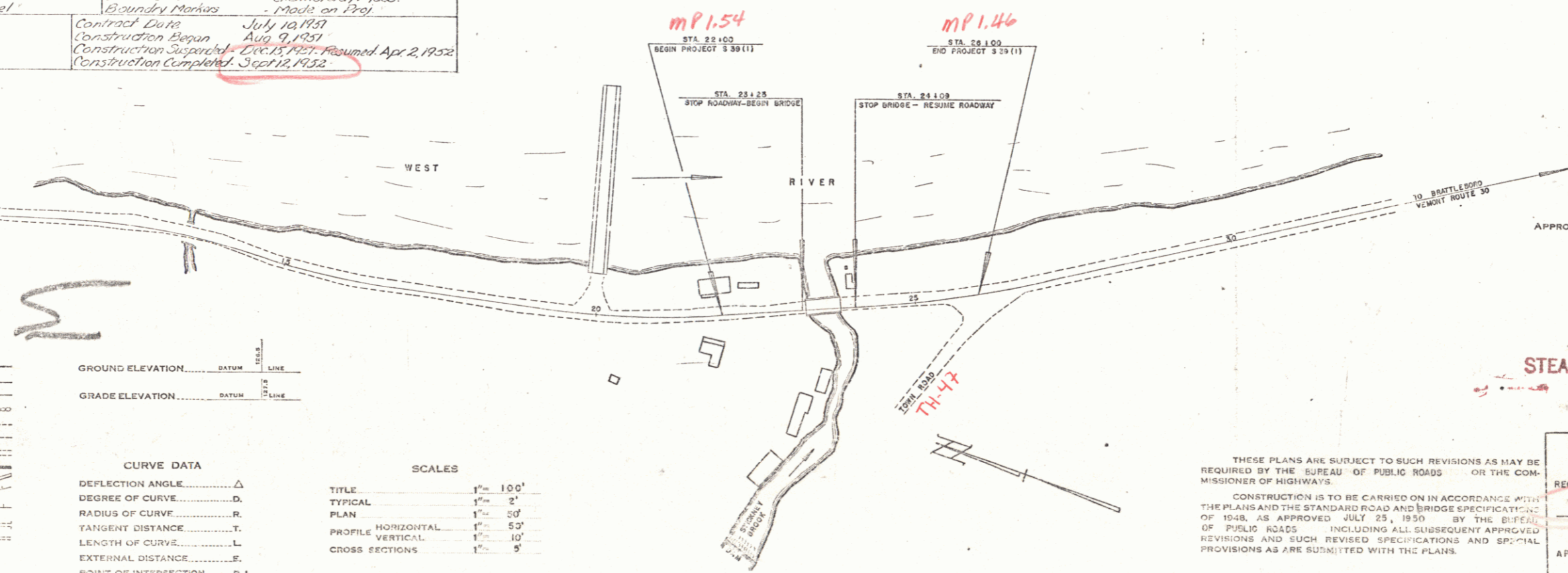
LENGTH OF ROADWAY 316.0 FEET = 0.0598 MILE
LENGTH OF BRIDGE 84.0 FEET = 0.0159 MILE
LENGTH OF PROJECT 400.0 FEET = 0.076 MILE

NAME AND NUMBER	TYPE
Dummerston - Tafts Bridge - S-39 (1)	WF Beam Cox Floor - 30'0" R/Wy. 84'0" Span 2" Curve Br Railing
RECORD PLANS	
MATERIALS	
Sub-base & Gravel - Taft Bt	Asphaltic Asbestos Coating - Mixed on Proj.
Reinforced Concrete - Aggers Co.	Stone Filling - Granite Quarry
Bit. Coat. - Lotts Asphalt Greenfield	Rip-rap - Granite Quarry
Concrete - Brattleboro Sand & Gravel	Five Post Guard Rail - Warner-Grosveld
Reinforced Steel - Bethlehem Steel Co.	Granite Curb - Chelmsford, Mass.
Struct. Steel - Vt. Structural Steel	Boundary Markers - Made on Proj.
Contractor - Wm. H. Morse	Contract Date - July 10, 1950
Res. Engineer - Charles A. Plumb	Construction Began - Aug. 9, 1950
Record Plans - J.F. Keper	Construction Suspended - Oct. 1950, Resumed Apr. 2, 1952
	Construction Completed - Sept. 12, 1952



DUMMERSTON (TAFTS BR) S-39 (1)
CONTRACTOR - WM. H. MORSE
CONSTRUCTION COMPLETED - SEPT. 12, 1952

DUMMERSTON
PROJECT S-39 (1)
LENGTH 0.076 MILE
TYPE WF BEAM 84'0" SPAN
DESIGNER Wm. H. Morse
DATE Sept 12 1952
LOCATION Route #30 Brattleboro - Newfane Road



GROUND ELEVATION DATUM LINE
GRADE ELEVATION DATUM LINE

CURVE DATA

DEFLECTION ANGLE	Δ
DEGREE OF CURVE	D
RADIUS OF CURVE	R
TANGENT DISTANCE	T
LENGTH OF CURVE	L
EXTERNAL DISTANCE	E
POINT OF INTERSECTION	P. I.
POINT OF CURVE	P. C.
POINT OF TANGENT	P. T.
POINT ON TANGENT	P. O. T.

SCALES

TITLE	1" = 100'
TYPICAL	1" = 5'
PLAN	1" = 50'
PROFILE HORIZONTAL	1" = 50'
PROFILE VERTICAL	1" = 10'
CROSS SECTIONS	1" = 5'

APPROVED: NOV. 6, 1950
H. H. Jenkins
CHIEF ENGINEER
SUBMITTED BY ORDER OF THE STATE HIGHWAY BOARD

STEARNS R. JENKINS

THESE PLANS ARE SUBJECT TO SUCH REVISIONS AS MAY BE REQUIRED BY THE BUREAU OF PUBLIC ROADS OR THE COMMISSIONER OF HIGHWAYS.

CONSTRUCTION IS TO BE CARRIED ON IN ACCORDANCE WITH THE PLANS AND THE STANDARD ROAD AND BRIDGE SPECIFICATIONS OF 1948, AS APPROVED JULY 25, 1950, BY THE BUREAU OF PUBLIC ROADS, INCLUDING ALL SUBSEQUENT APPROVED REVISIONS AND SUCH REVISED SPECIFICATIONS AND SPECIAL PROVISIONS AS ARE SUBMITTED WITH THE PLANS.

DEPARTMENT OF COMMERCE
BUREAU OF PUBLIC ROADS

RECOMMENDED FOR APPROVAL
Pin # 00R345

DISTRICT ENGINEER DATE

APPROVED

APPROVED NOV. 1, 1950
G. S. [Signature] BRIDGE ENGINEER

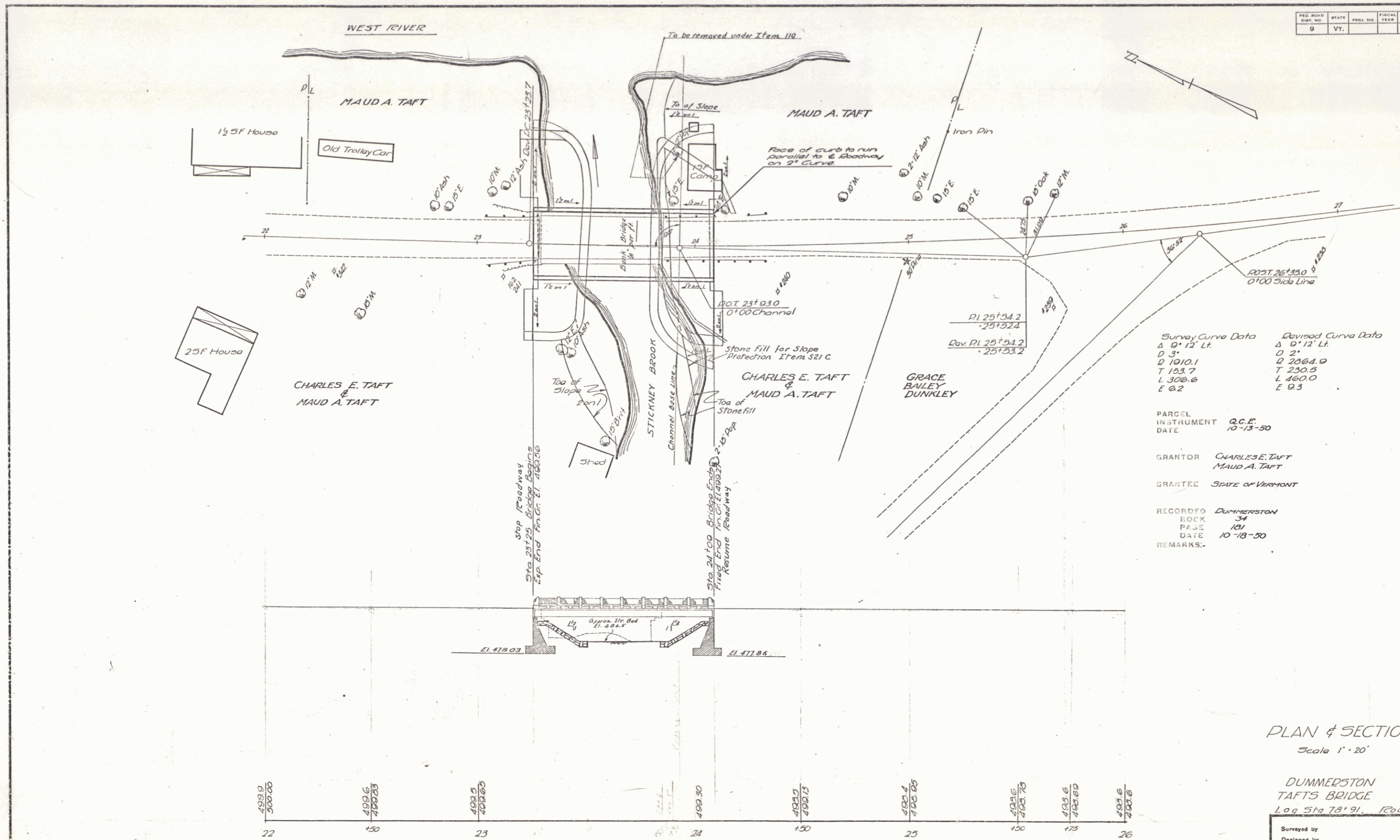
APPROVED NOV. 5, 1950
[Signature] HIGHWAY ENGINEER

APPROVED NOV. 1, 1950
[Signature] DISTRICT HIGHWAY COMMISSIONER

DIVISION ENGINEER DATE

PROJECT NO. 390 FILED
SHEET 0 OF 5

FILE NO.	STATE	PROJ. NO.	FISCAL YEAR	SHEET NO.	TOTAL SHEETS
9	VT.				



Survey Curve Data	Revised Curve Data
Δ 9° 12' Lt.	Δ 0° 12' Lt.
D 3'	D 2'
Q 1010.1	Q 2064.0
T 230.5	T 230.5
L 308.6	L 160.0
E 0.2	E 9.5

PARCEL INSTRUMENT DATE
 Q.C.E. 10-13-50
 GRANTOR CHARLES E. TAFT MAUD A. TAFT
 GRANTEE STATE OF VERMONT
 RECORDED DUMMERSTON
 BOOK 34
 PAGE 181
 DATE 10-18-50
 REMARKS:

PLAN & SECTION
 Scale 1" = 20'

DUMMERSTON
 TAFTS BRIDGE
 Log Sta 78+91, Route 30

Surveyed by		Filed
Designed by		
Drawn by	ETB-HAS	
Traced by	HAS	
Checked by	SN	
Series	5 No. 39(1)	
	Sheet 10 of 25	

499.9 500.00	499.6 499.23	499.5 499.20	499.30	499.2 499.15	499.1 499.05	498.6 498.60	498.6 498.60
22	23	24	25	26	27	28	29