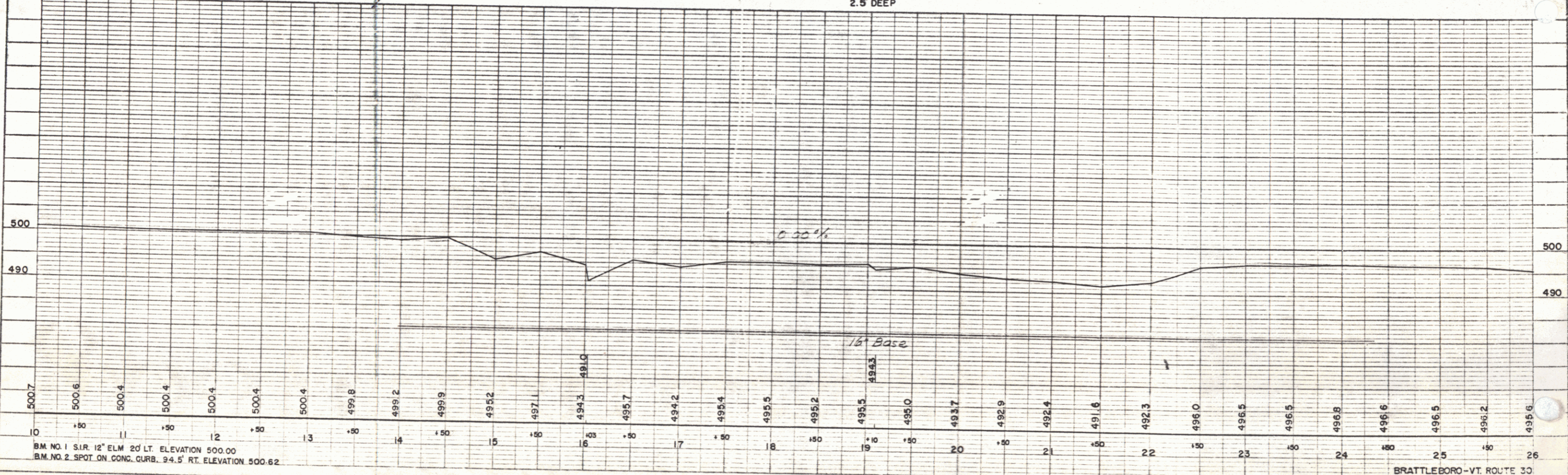
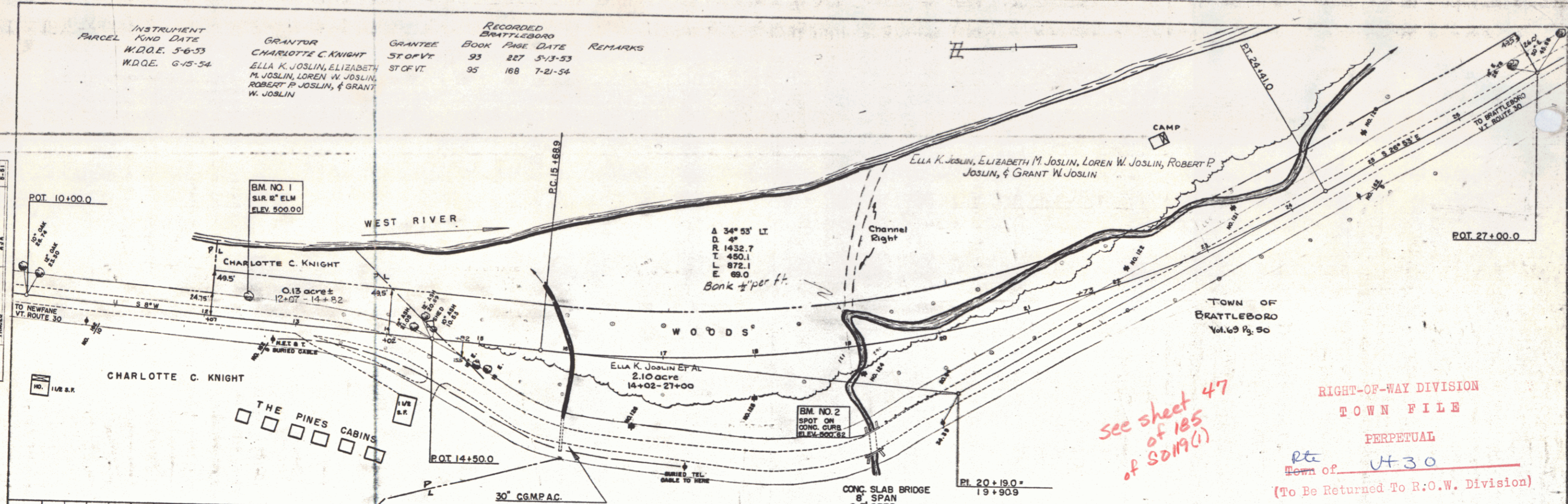


INSTRUMENT	GRANTOR	GRANTEE	RECORDED	REMARKS
PARCEL	KIND	DATE	BRATTLEBORO	
W.D.E.	5-6-53	CHARLOTTE C. KNIGHT	93 227	5-13-53
W.D.E.	6-15-54	ELLA K. JOSLIN, ELIZABETH M. JOSLIN, LOREN W. JOSLIN, ROBERT P. JOSLIN, & GRANT W. JOSLIN	95 168	7-21-54

PLAN
 DRAWN BY: []
 CHECKED BY: []
 DATE: []

PROFILE
 DRAWN BY: []
 CHECKED BY: []
 DATE: []



*see sheet 47
 of 185
 of S0119(1)*

RIGHT-OF-WAY DIVISION
 TOWN FILE
 PERPETUAL
 Town of VT 30
 (To Be Returned To R.O.W. Division)

BM. NO. 1 S.I.R. 12" ELM 20' LT. ELEVATION 500.00
 BM. NO. 2 SPOT ON CONC. CURB. 94.5' RT. ELEVATION 500.62

PLATE 1 - PLAN-PROFILE
 DRAWN BY: []
 CHECKED BY: []
 DATE: []

BRATTLEBORO - VT. ROUTE 30
 THE PINES CABINS RELOCATION

SHEET 47D