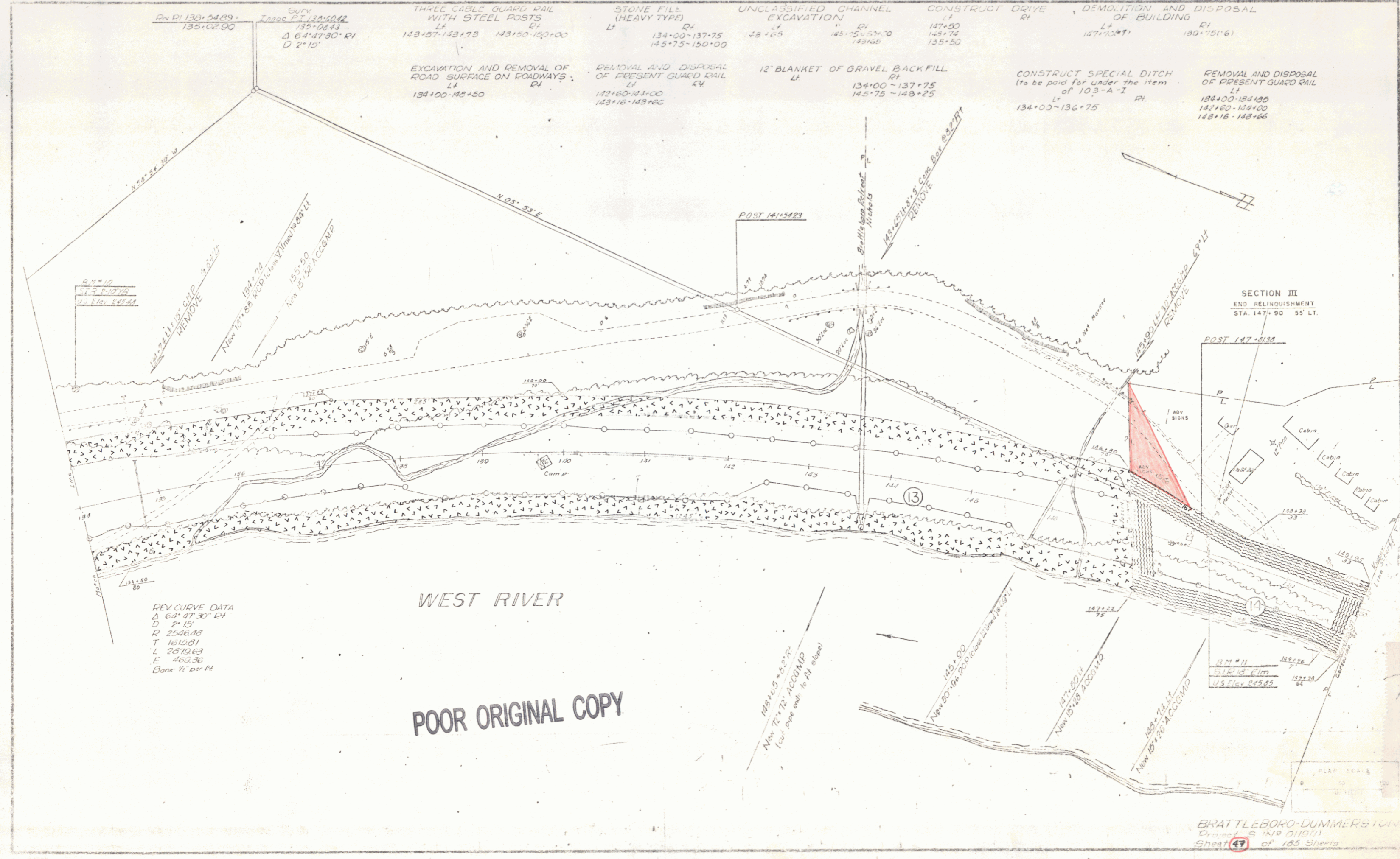


Curve PVI 135+02.90 TANGENT PT 135+02.90 $\Delta 64^{\circ}47'30''$ PI $D 2^{\circ}15'$	THREE CABLE GUARD RAIL WITH STEEL POSTS L _A 143+57-143+73 R _A 143+50-143+00	STONE FILL (HEAVY TYPE) L _A 134+00-137+75 R _A 145+75-150+00	UNCLASSIFIED CHANNEL EXCAVATION L _A 143+65 R _A 145+75-150+00 143+65	CONSTRUCT DRIVE L _A 147+50 R _A 145+74 135+50	DEMOLITION AND DISPOSAL OF BUILDING L _A 147+10+1 R _A 139+75(16)
	EXCAVATION AND REMOVAL OF ROAD SURFACE ON ROADWAYS L _A 134+00-143+50 R _A	REMOVAL AND DISPOSAL OF PRESENT GUARD RAIL L _A 142+60-143+00 R _A 143+16-143+66	12" BLANKET OF GRAVEL BACKFILL L _A 134+00-137+75 R _A 145+75-148+25	CONSTRUCT SPECIAL DITCH (to be paid for under the item of 103-A-I) L _A 134+00-136+75 R _A	REMOVAL AND DISPOSAL OF PRESENT GUARD RAIL L _A 134+00-134+00 R _A 142+60-143+00 143+16-143+66



REV CURVE DATA
 $\Delta 64^{\circ}47'30''$ PI
 $D 2^{\circ}15'$
 $R 2546.00$
 $T 1610.81$
 $L 2019.63$
 $E 403.36$
 Back 1/2 PI

WEST RIVER

POOR ORIGINAL COPY

SECTION III
 END RELINQUISHMENT
 STA. 147+90 55' LT.

BRATTLEBORO-DUMMERSION
 Drawing S 149 210(11)
 Sheet 47 of 183 Sheets