

Turnouts Constructed
235+75 - 238+58 Lt

POST 228+00.0

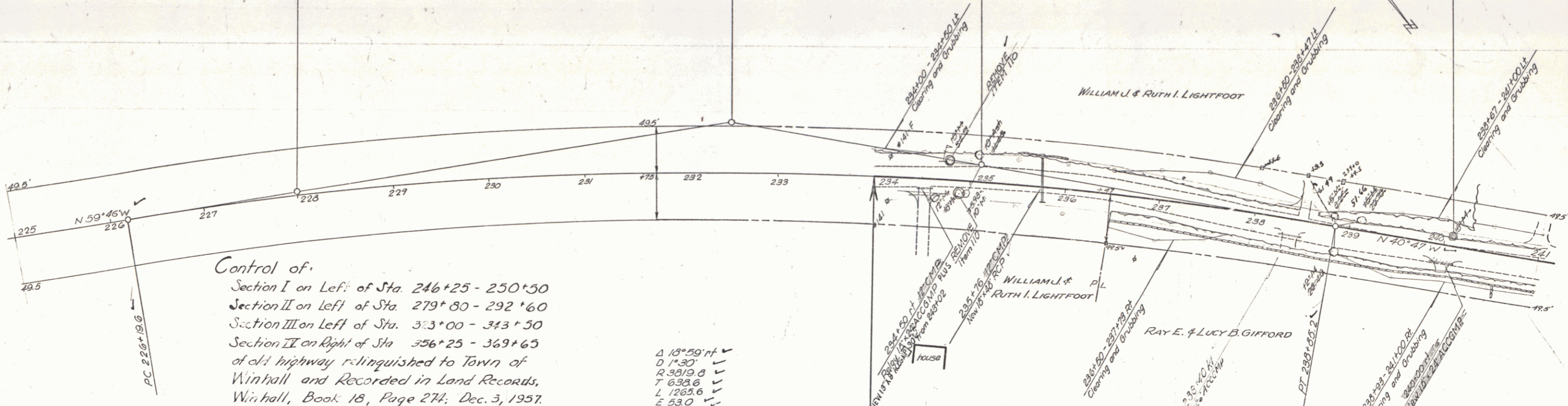
THREE CABLE GUARD RAIL WITH STEEL POSTS
Lt
234+00 - 235+16
Rt
STEEL GUIDE POSTS, MOD. @ 16 C/C
234+20 - 235+80 LT.

INACC. PI 232+50.2
232+46.8

POST 235+09.6

CONSTRUCT DRIVES
Lt
238+50
Rt
234+50
240+00

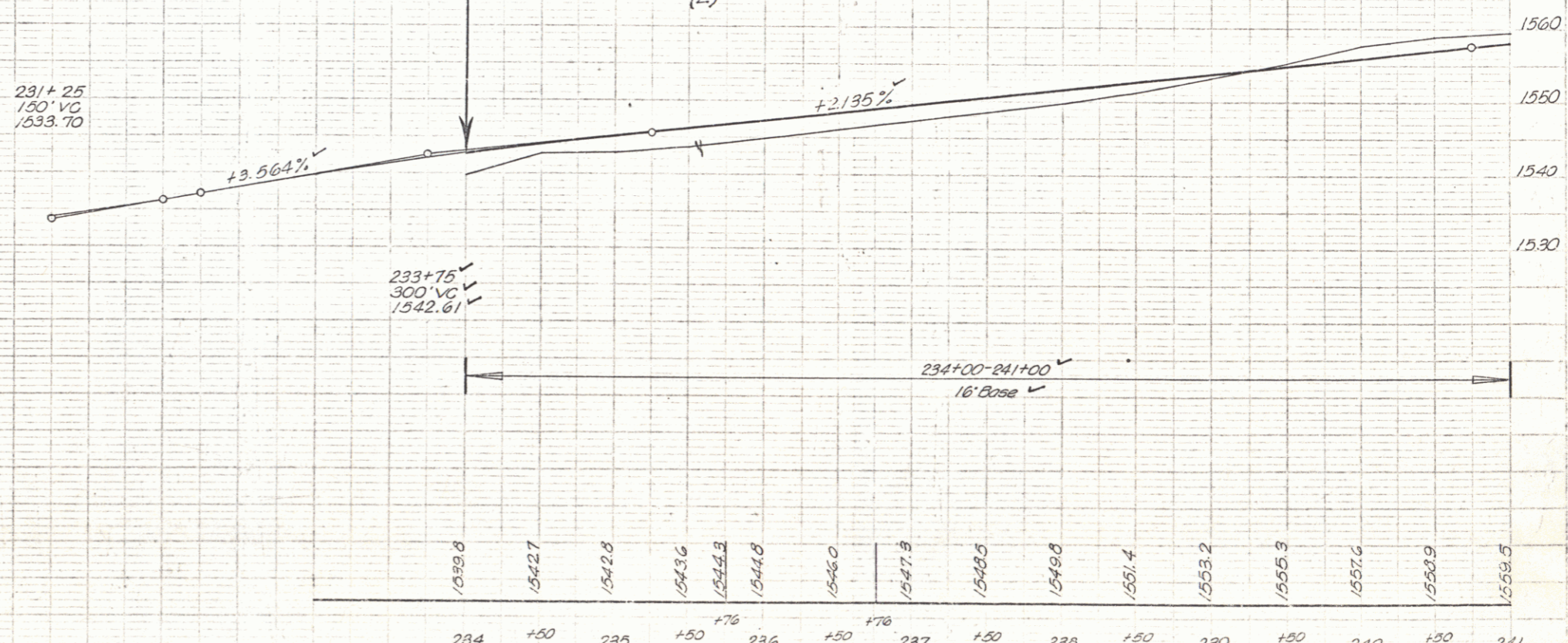
BT#18



Control of:
Section I on Left of Sta. 246+25 - 250+50
Section II on Left of Sta. 279+80 - 292+60
Section III on Left of Sta. 313+00 - 343+50
Section IV on Right of Sta. 356+25 - 369+65
of old highway relinquished to Town of
Winhall and Recorded in Land Records,
Winhall, Book 18, Page 274, Dec. 3, 1957.

Δ 13° 59' rt
D 1° 30'
R 3019.8
T 638.6
L 1285.6
E 53.0
Bank 1/2 per Ft

234+00.0
END PROJECT FH 78
BEGIN PROJECT S 43 (2)
(L)



BT#18 SIR 13 Maps 9 Lt Sta 240+00 elev 1560.62

WINHALL
Proj S 43 (L)
Sheet 13 of 20