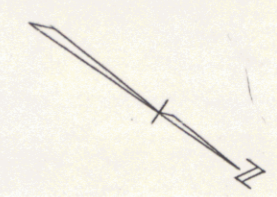


THREE CABLE GUARD RAIL WITH STEEL POSTS 172+00-172+44 RT

CONSTRUCT DRIVES Rt 174+22 V 173+30 Lt 174+65 V

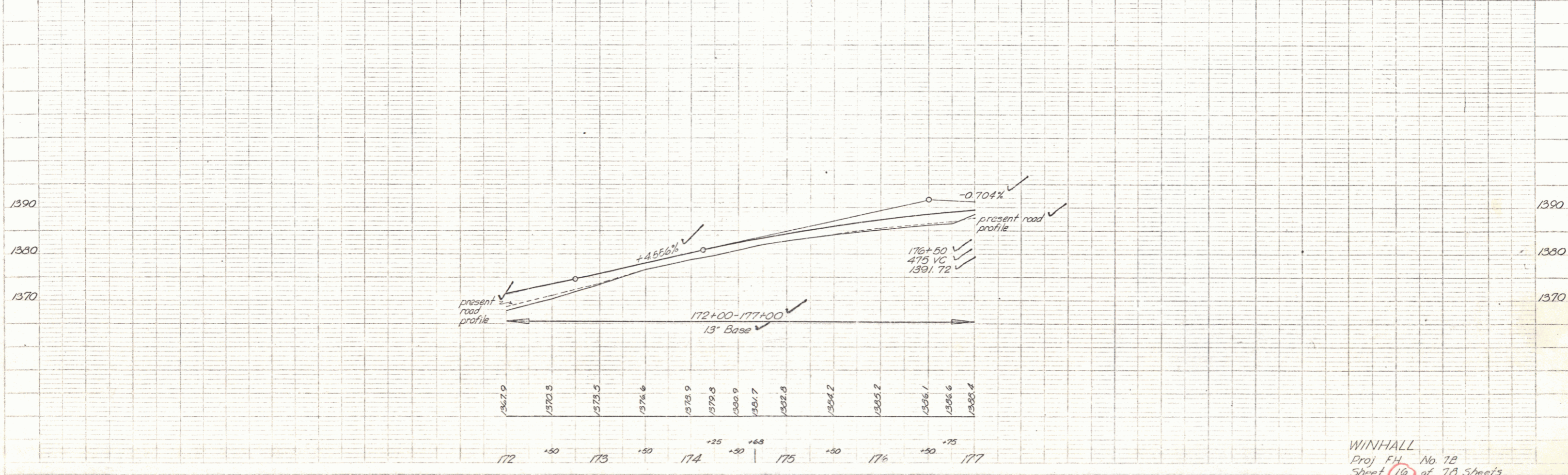
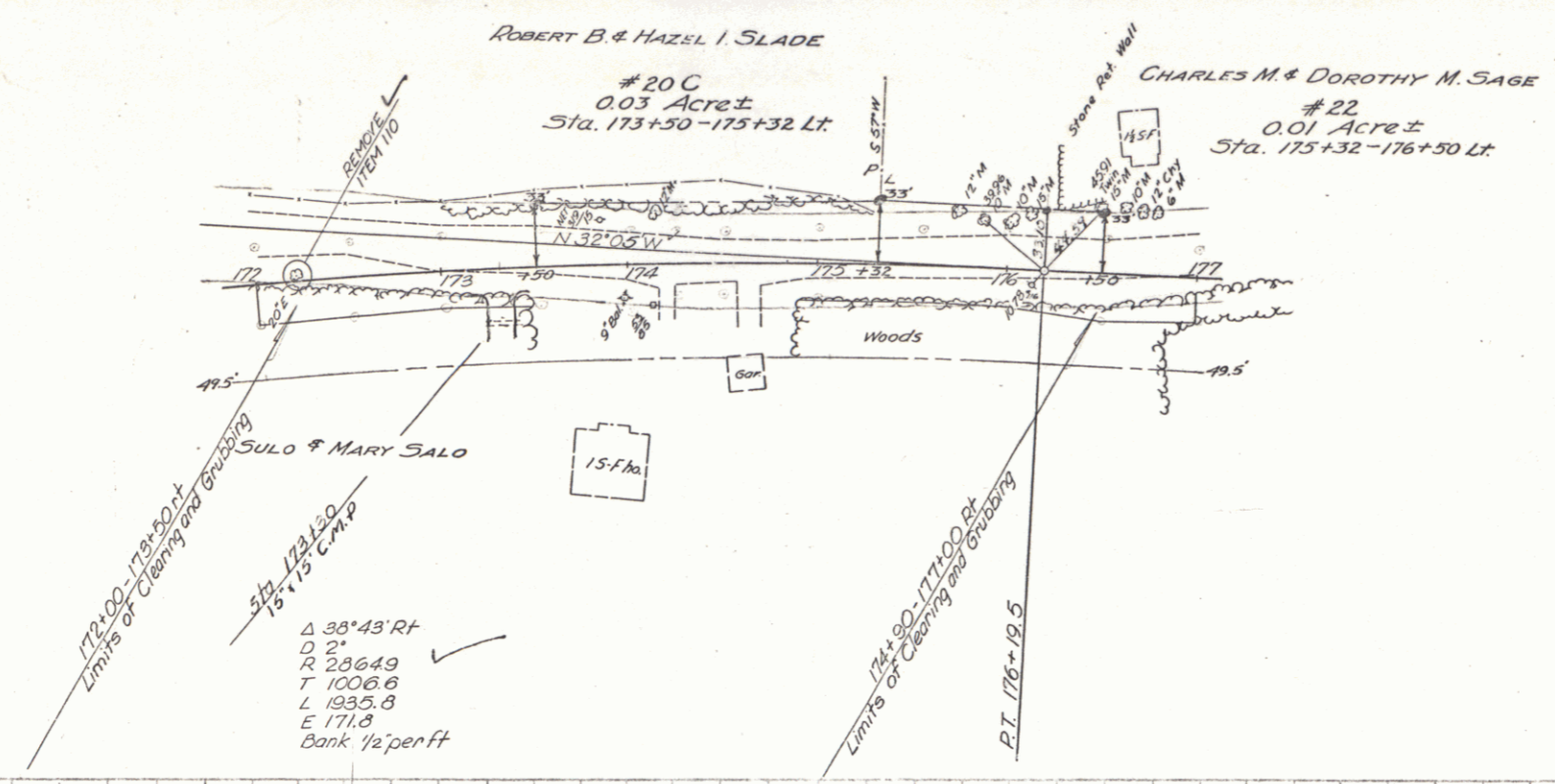
STEEL GUIDE POSTS -16" W -176+18 -176+19.5 RA

PARCEL INSTRUMENT DATE	GRANTOR	GRANTEE	RECORDED TOWN OF	Book	Page	Date	REMARKS
22	W.D.O.E.	5-24-55 CHARLES M & DOROTHY M SAGE	ST. OF VT.	WINHALL	17	495-499	7-14-55



PLAN
 17-54
 H. L. LAMSON

PROF. E. LAMSON
 17-54
 H. L. LAMSON



WINHALL
 Proj FH No. 7B
 Sheet 10 of 70 Sheets