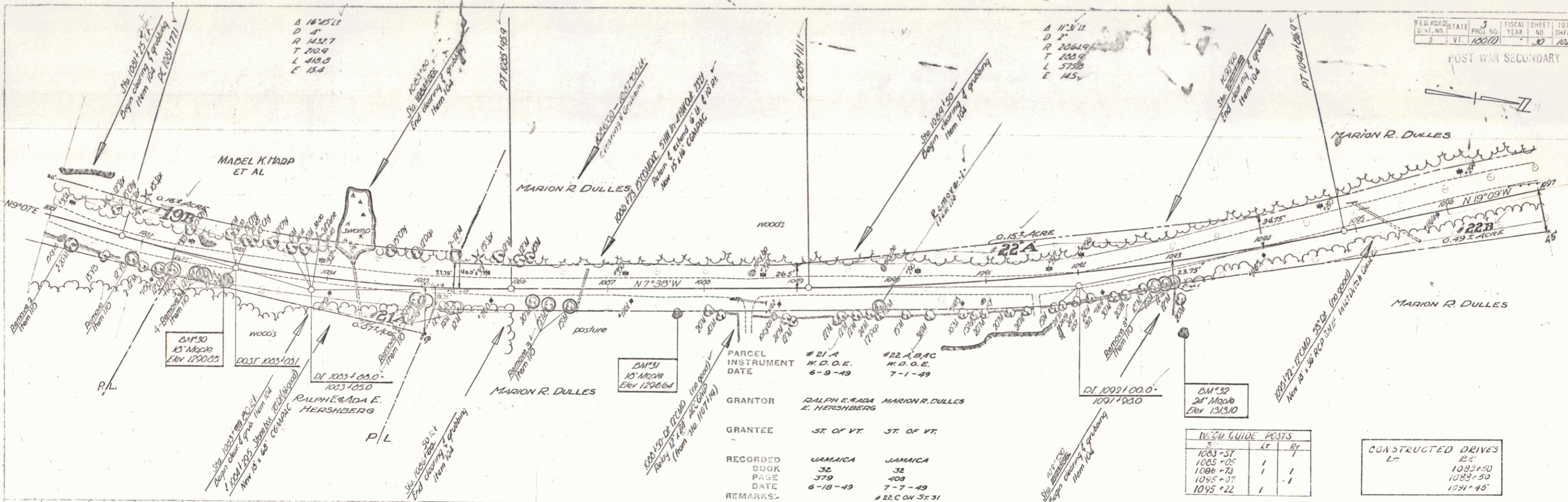


FED. ROAD DIST. NO.	STATE	FISCAL YEAR	SHEET NO.	TOTAL SHEETS
3	VT	1950	30	102

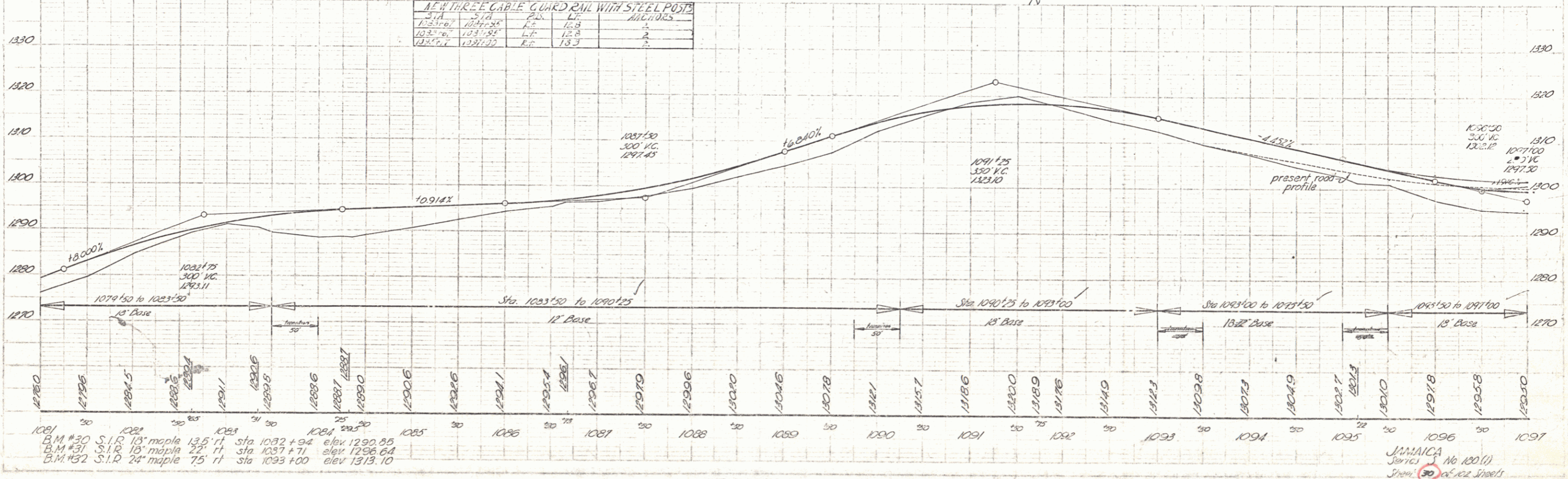


PARCEL INSTRUMENT DATE	#21 A W.D.O.E. 6-9-49	#22 A,B,C W.D.O.E. 7-1-49
GRANTOR	RALPH E. SADA E. HERSHBERG	MARION R. DULLES
GRANTEE	ST. OF VT.	ST. OF VT.
RECORDED BOOK	JAMAICA 32	JAMAICA 32
PAGE	379	408
DATE	6-18-49	7-7-49
REMARKS		#22 C.W. 5:31

W.C.U. GUIDE POSTS		
S	LT	RT
1083+37		
1085+25	1	
1086+73	1	1
1085+07		1
1095+22	1	1

CONSTRUCTED DRIVES	
LT	RT
	25
	1083+30
	1085+30
	1091+48

AT THREE CABLE GUARD RAIL WITH STEEL POSTS				
STA.	S.P.	P.W.	LT	RT
1233+67	1234+95	R.E.	12.8	2
1233+67	1234+95	L.F.	12.8	2
1234+67	1234+95	R.E.	13.3	2



B.M. #30 S.I.R. 18' maple 13.5' ft sta 1082+94 elev 1290.85  
 B.M. #31 S.I.R. 18' maple 22' ft sta 1037+71 elev 1296.64  
 B.M. #32 S.I.R. 24' maple 75' ft sta 1093+00 elev 1313.10

JAMAICA No 180(1)  
 Series 30 of 102 Sheets