

PARCEL: 19-44B #20-A
 INSTRUMENT: W.D.O.E. W.D.O.E.
 DATE: 5-20-49 6-9-49

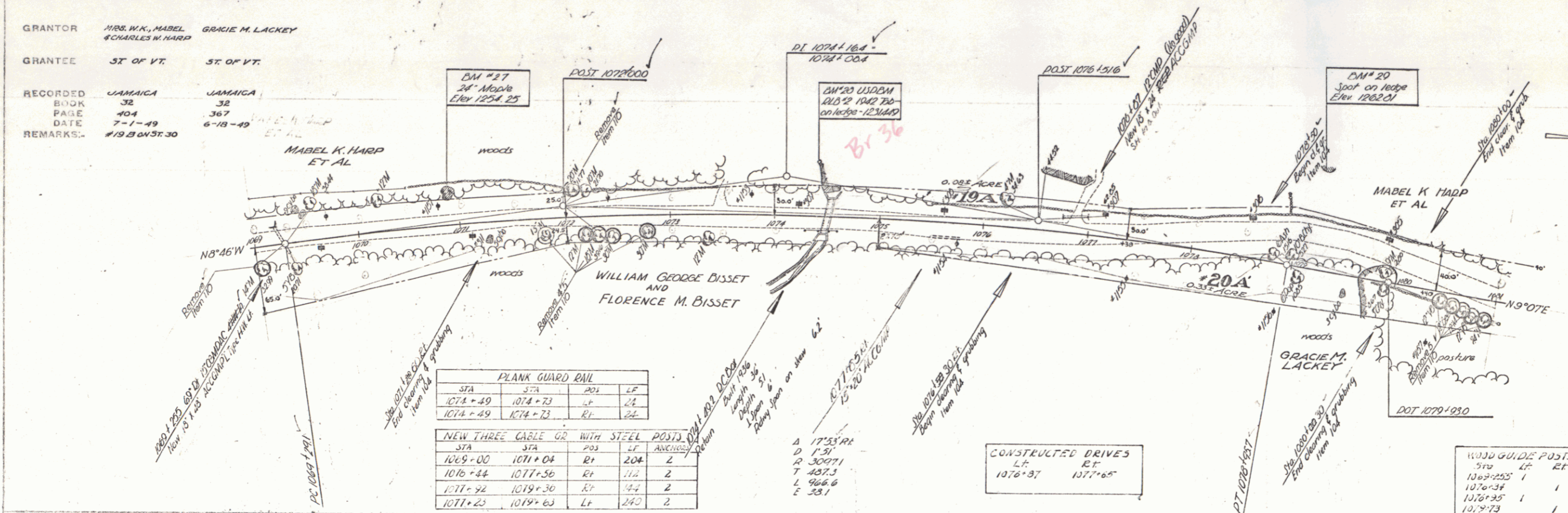
GRANTOR: MRS. W.K. MABEL CHARLES W. HARP GRACIE M. LACKEY

GRANTEE: ST OF VT. ST OF VT.

RECORDED: JAMAICA JAMAICA
 BOOK: 32 32
 PAGE: 404 367
 DATE: 7-1-49 6-18-49

REMARKS: #19 B ON ST. 30

FED. ROAD DIST. NO. 3 STATE 9 PROJ. NO. 100(1) FISCAL YEAR 49 SHEET NO. 24 TOTAL SHEETS 102
 POST WAR SECONDARY 1

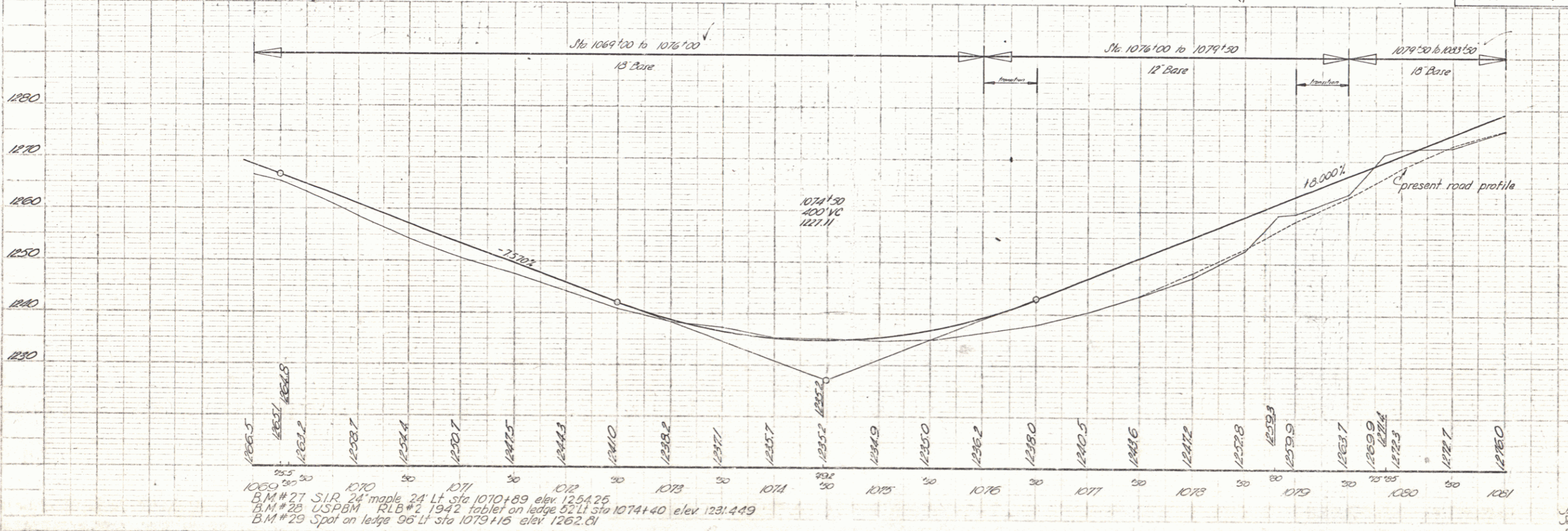


STA	STA	POS	LT	RT
1074+49	1074+73	RT	24	24
1074+49	1074+73	RT	24	24

STA	STA	POS	LT	RT
1069+00	1071+04	RT	204	2
1076+44	1077+56	RT	112	2
1077+42	1079+30	RT	144	2
1077+42	1079+30	LT	240	2

LT	RT
1076+37	1077+05

STA	LT	RT
1076+255	1	1
1076+34	1	1
1076+35	1	1
1076+73	1	1



1069 20 50 1070 50 1071 50 1072 50 1073 50 1074 50 1075 50 1076 50 1077 50 1078 50 1079 50 1080 50 1081

B.M. #27 S.I.R. 24' maple 24' Lt. sta 1070+89 elev 1254.25
 B.M. #28 USPBM RLB #2 1942 tablet on ledge 52' Lt. sta 1074+40 elev 1231.449
 B.M. #29 Spot on ledge 56' Lt. sta 1079+15 elev 1262.61

JAMAICA Series 5 No 100(1) Sheet 24 of 102 Sheets 12