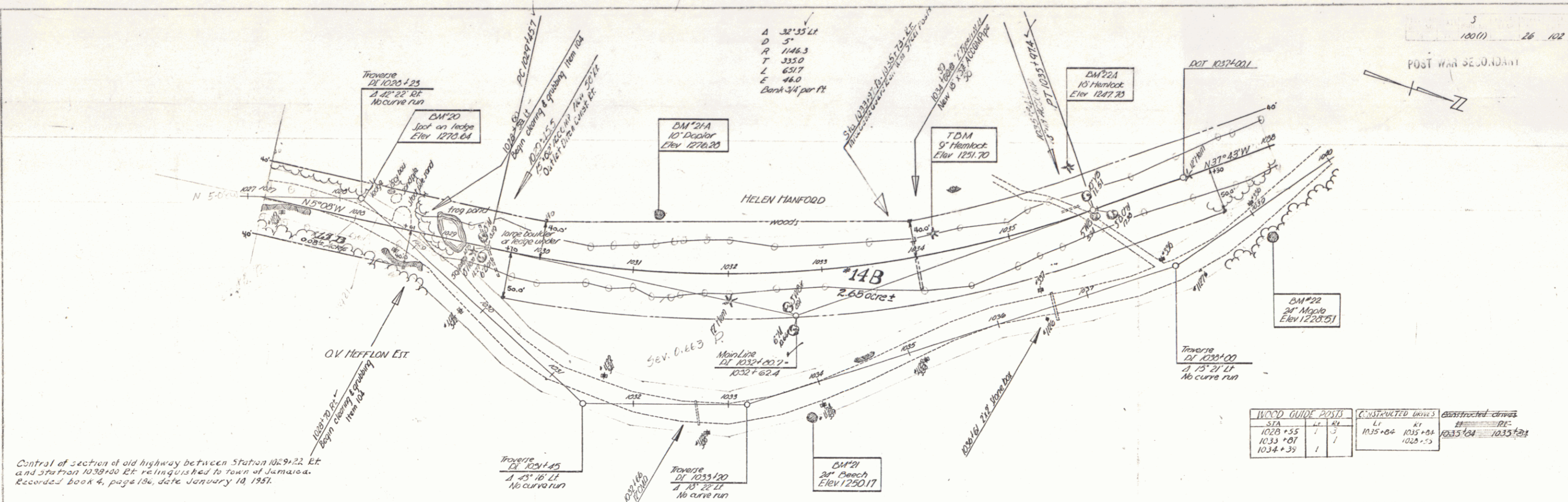


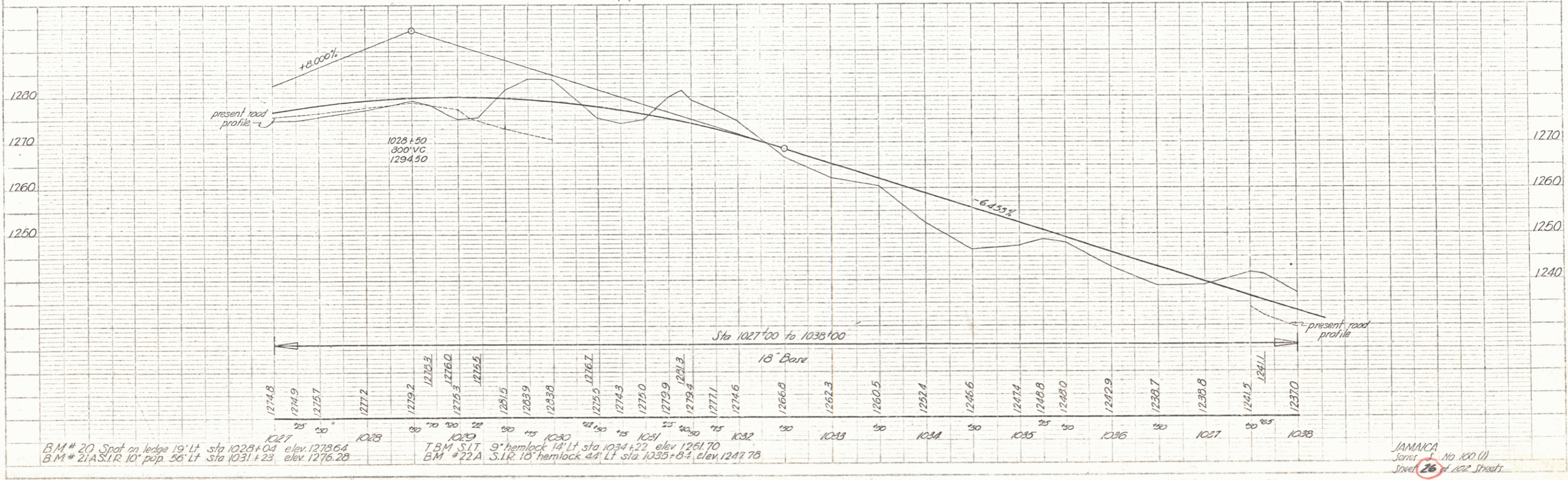
PLAN  
 DATE 8-26-51  
 DRAWN BY H. H. HARRIS  
 CHECKED BY H. H. HARRIS



Control of section of old highway between Station 1029+22 Et and Station 1038+00 Et relinquished to Town of Jamaica. Recorded Book 4, page 186, date January 14, 1951.

WOOD GUIDE POINTS	CONSTRUCTED MARKS	CONSTRUCTED MARKS
STA	DATE	DATE
1028+55	1/3	1035+04
1033+01	1	1035+04
1034+39	1	1035+04

PROFILE  
 DATE 8-26-51  
 DRAWN BY H. H. HARRIS  
 CHECKED BY H. H. HARRIS



JAMAICA  
 Series No. 100 (1)  
 Sheet 26 of 22 Sheets

PLATE 1 - PLAN PROFILE - P.P.A. & E. STAMBO  
 SCALE 1" = 40' HORIZ. 1" = 10' VERT.  
 J. & J. CIVIL ENGINEERS