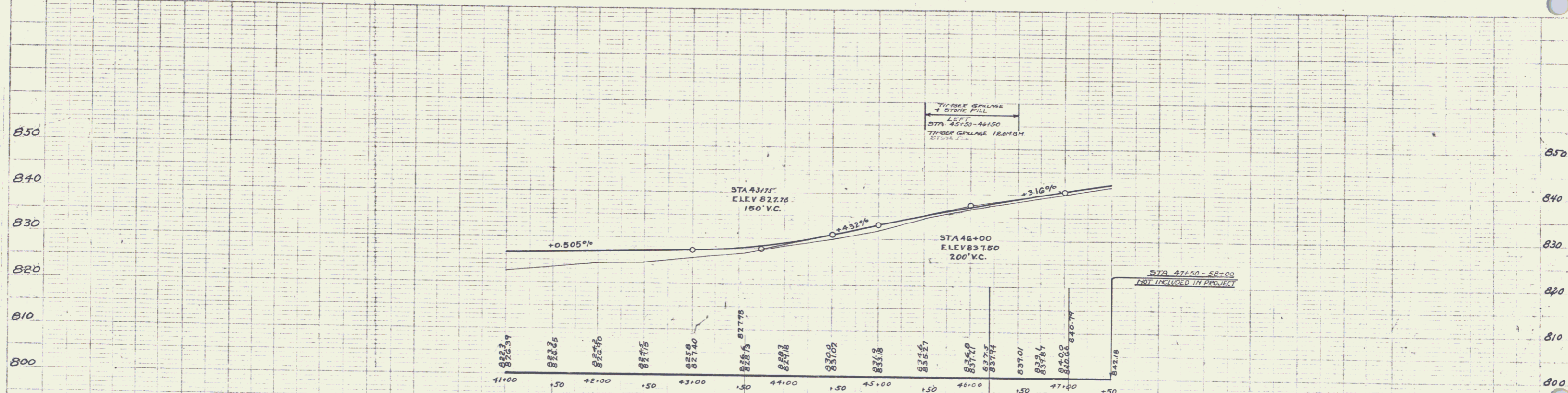
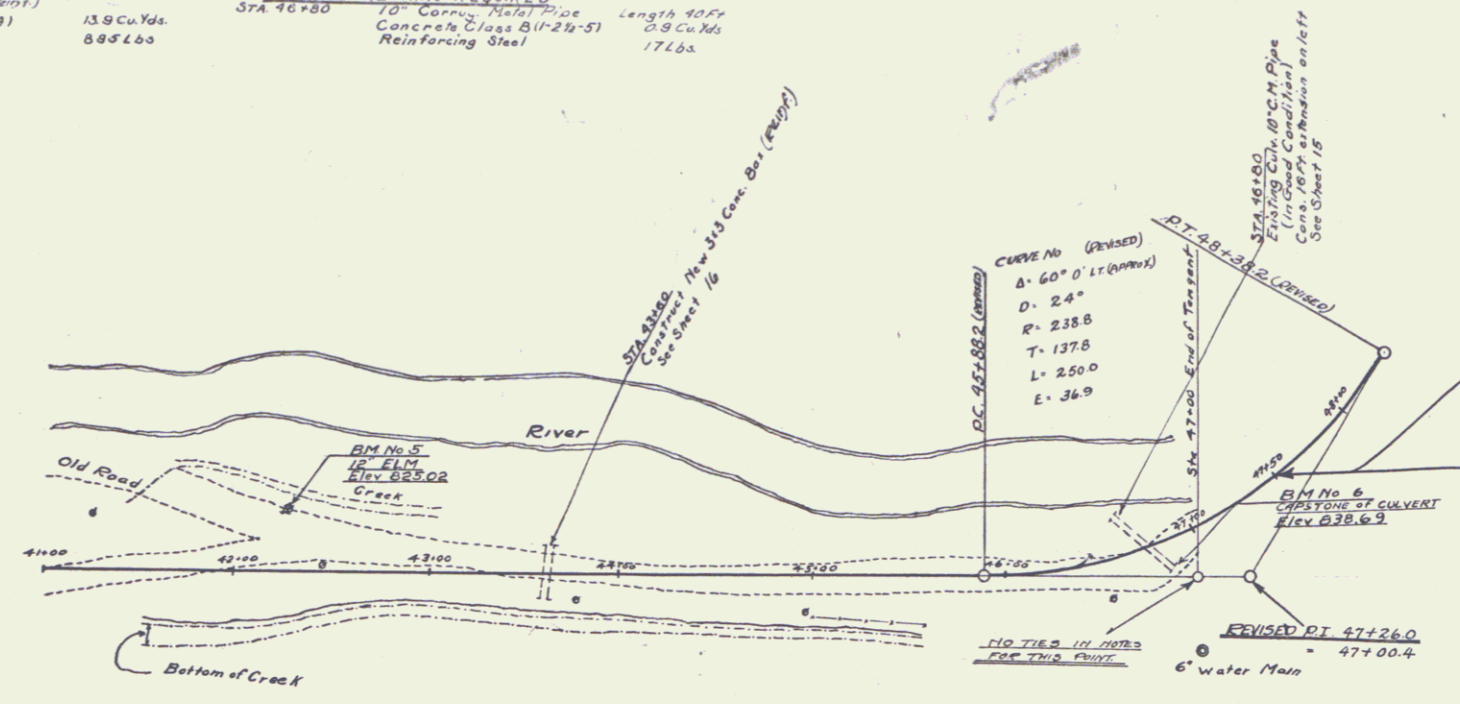


**WOOD GUARD RAIL REQUIRED**  
**ON LEFT**  
 STA 43+48 TO STA 43+72 LENGTH 24 FT  
 " 41+00 " " 41+12 " 12 FT  
**ON RIGHT**  
 STA 43+48 TO STA 45+72 LENGTH 24 FT  
 " 46+72 " " 46+90 " 18 FT  
 " 41+00 " " 41+12 " 12 FT

**CABLE GUARD RAIL REQUIRED**  
**ON LEFT**  
 STA 45+00 TO STA 47+50 Long M 250 Lin. Ft.

**NEW CULVERTS REQUIRED**  
 STA 43+60  
 373 Concrete Box (Elev) 13.9 Cu Yds  
 Concrete Class A (1-2-4) 885 Lbs  
 Reinforcing Steel

**CULVERT REPAIRS REQUIRED**  
 STA 46+80  
 10' Corrug. Metal Pipe Length 40 FT  
 Concrete Class B (1-2 1/2-5) 0.9 Cu Yds  
 Reinforcing Steel 17 Lbs



BM No 5 Horiz. nail in 12" Elm - 30' left of Sta 42+25 Elev 825.02  
 BM No 6 On Capstone of 10" C.M.P. Culv. Inlet Endwall 3' Right of tangent at Sta. 46+90 Elev 838.69