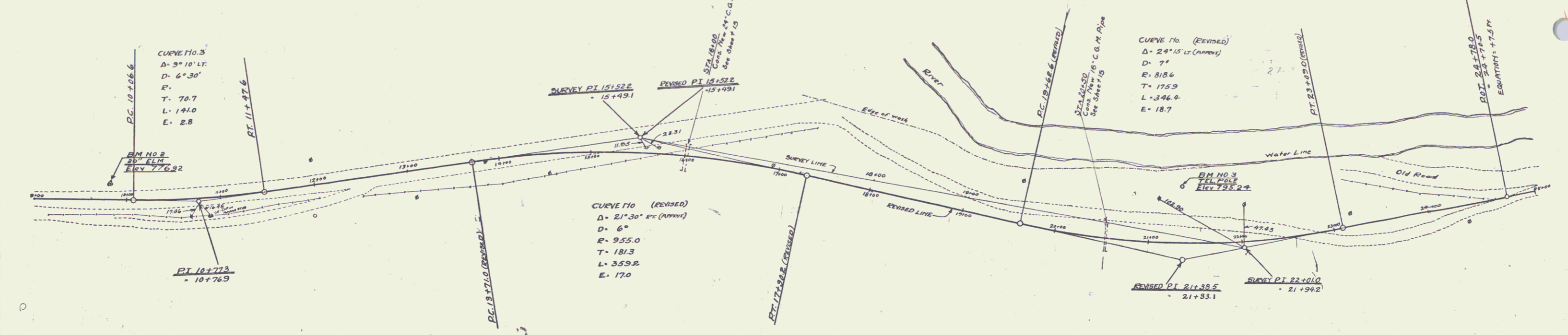


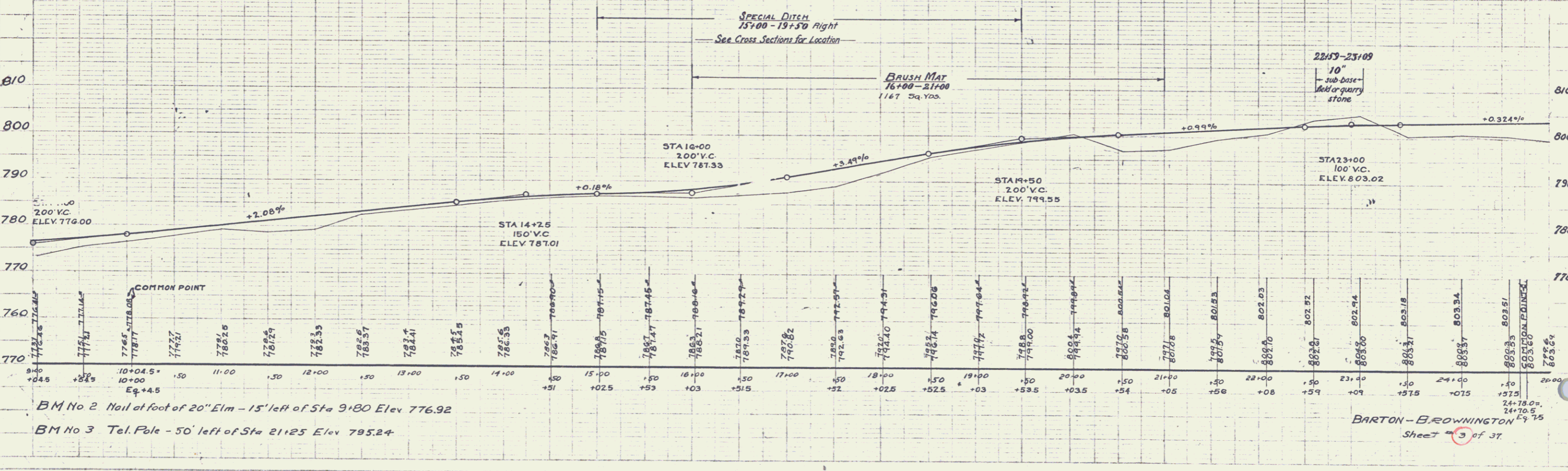
**CABLE GUARD RAIL REQUIRED**  
 STA 24+05 - STA 25+00 Length 95 Lin Ft

**WOOD GUARD RAIL REQUIRED**  
**ON LEFT**  
 STA 15+88 TO STA 16+18 LENGTH 30 Ft  
 20+38 - 20+62 - 24 Ft  
**ON RIGHT**  
 STA 15+88 TO STA 16+12 LENGTH 24 Ft  
 20+38 - 20+62 - 24 Ft

**NEW CULVERTS REQUIRED**  
 STA 16+00 24" Corrug. Galv. Metal Pipe Length 30 Ft  
 Concrete Class A (U-2-4) 26 Cu Yds  
 Reinforcing Steel 59 Lbs  
 STA 20+30 18" Corrug. Galv. Metal Pipe Length 30 Ft  
 Concrete Class B (U-2-4-3) 27 Cu Yds  
 Reinforcing Steel 35 Lbs



Brush mat to be constructed in locations as shown on plans or as directed by the Engineer. This mat to be constructed of brush and small trees of such sizes and quality as to meet the approval of the Engineer. The depth of this mat shall be sufficient to adequately provide a mat that will prevent the fill from penetrating into the sub-soil. The entire brush mat to be approved by the Engineer before placing of any fill on the same, and the unit price bid for this item is to include furnishing and placing of raw material, and labor and expense incidental thereto.



BM No 2 Nail at foot of 20' Elm - 15' left of Sta 9+80 Elev 776.92  
 BM No 3 Tel. Pole - 50' left of Sta 21+25 Elev 795.24

BARTON-BROWNINGTON  
 Sheet 3 of 37