

INDEX OF SHEETS

SHEET NO.	1	TITLE PAGE
2	TYPICAL CROSS-SECTION OF IMPROVEMENT (DOUBLE TACK COAT OF REFINED TAR WITH PEA STONE SEAL ITEM 29A)	
3	BANKING AND WIDENING TABLES	
4-12	PLAN AND PROFILE	
13	STANDARD STRUCTURE SHEET S-28 PIPE CULVERTS	
14	" " " " S-30A BOUNDARY MARKERS	
15	" " " " S-40 BARRICADES, SIGNS & LIGHTS	
16	" " " " S-41 ROUNDING SLOPES	
17-50	CROSS SECTIONS	

STANDARD STRUCTURE SHEET APPROVED BY THE CHIEF ENGINEER, VT. STATE DEPT. OF HIGHWAYS

S-28 APRIL 26, 1941
S-30A APRIL 19, 1941
S-40 DECEMBER 18, 1945

STATE OF VERMONT
STATE HIGHWAY DEPARTMENT

PLAN AND PROFILE OF PROPOSED
STATE HIGHWAY

SECONDARY PROJECT

TOWN OF IRASBURG

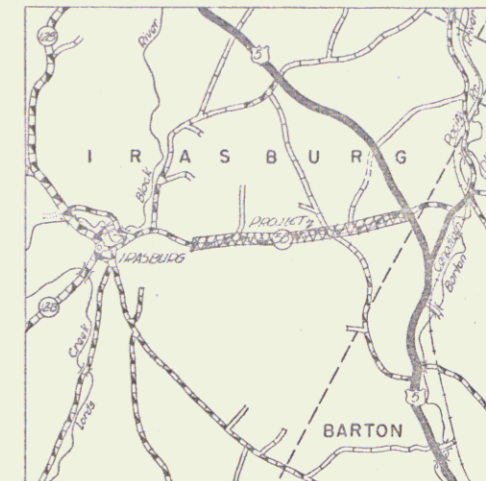
VT ROUTE 58

IRASBURG-ORLEANS ROAD

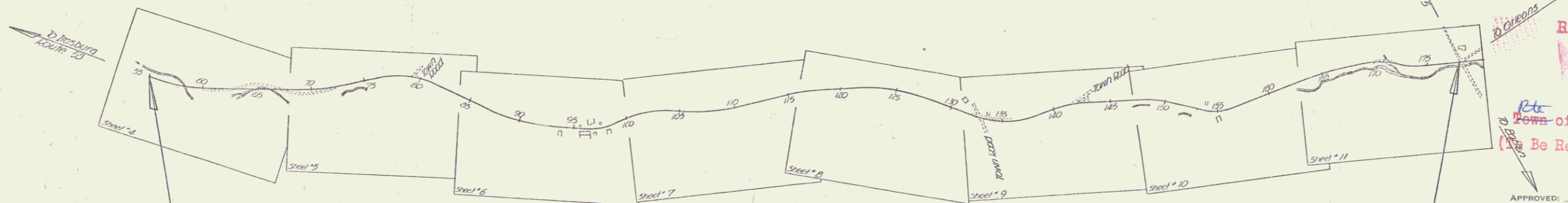
BEGINNING AT A POINT ON ROUTE 58, 1.14 MILES
EASTERLY OF ITS INTERSECTION WITH ROUTE 12-B
IN IRASBURG VILLAGE AND EXTENDING EASTERLY
2.337 MILES TO ITS INTERSECTION WITH ROUTE U.S. 5

LENGTH OF PROJECT 12338.6 FT.=2.337 MILES

FED. ROAD DIST. NO.	STATE	FISCAL YEAR	SHEET NO.	TOTAL SHEETS
9	VT.	55 (I)	1	570



SCALE 1 INCH = 1 MILE



STA 55+00.0 MP 4.223
BEGINNING OF PROJECT S 55 (I)

STA 57+38.6 MP 6.547
END OF PROJECT S 55 (I)

RIGHT-OF-WAY DIVISION
TOWN FILE
PERPETUAL

APPROVED: MARCH 26, 1947

H. E. August
COMMISSIONER OF HIGHWAYS

SUBMITTED BY ORDER OF THE STATE HIGHWAY BOARD

NO.	LENGTH	DATE
1	21.11	1947
2	1.00	1947
3	1.00	1947
4	1.00	1947
5	1.00	1947
6	1.00	1947
7	1.00	1947
8	1.00	1947
9	1.00	1947
10	1.00	1947
11	1.00	1947
12	1.00	1947
13	1.00	1947
14	1.00	1947
15	1.00	1947
16	1.00	1947
17	1.00	1947
18	1.00	1947
19	1.00	1947
20	1.00	1947
21	1.00	1947
22	1.00	1947
23	1.00	1947
24	1.00	1947
25	1.00	1947
26	1.00	1947
27	1.00	1947
28	1.00	1947
29	1.00	1947
30	1.00	1947
31	1.00	1947
32	1.00	1947
33	1.00	1947
34	1.00	1947
35	1.00	1947
36	1.00	1947
37	1.00	1947
38	1.00	1947
39	1.00	1947
40	1.00	1947
41	1.00	1947
42	1.00	1947
43	1.00	1947
44	1.00	1947
45	1.00	1947
46	1.00	1947
47	1.00	1947
48	1.00	1947
49	1.00	1947
50	1.00	1947

GROUND ELEVATION DATUM LINE
GRADE ELEVATION DATUM LINE

CURVE DATA
DEFLECTION ANGLE.....Δ
DEGREE OF CURVE.....D
RADIUS OF CURVE.....R
TANGENT DISTANCE.....T
LENGTH OF CURVE.....L
EXTERNAL DISTANCE.....E
POINT OF INTERSECTION.....P. I.
POINT OF CURVE.....P. C.
POINT OF TANGENT.....P. T.
POINT ON TANGENT.....P. O. T.

SCALES
TITLE 1" = 300'
TYPICAL 1" = 2'
PLAN 1" = 50'
PROFILE HORIZONTAL 1" = 50'
PROFILE VERTICAL 1" = 10'
CROSS SECTIONS 1" = 5'

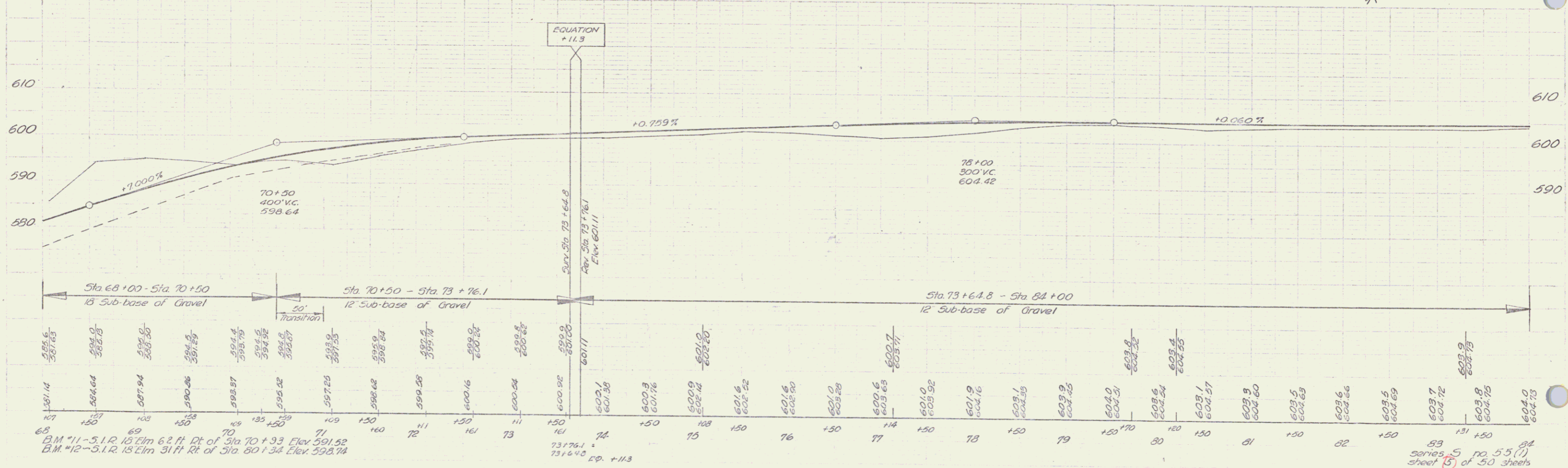
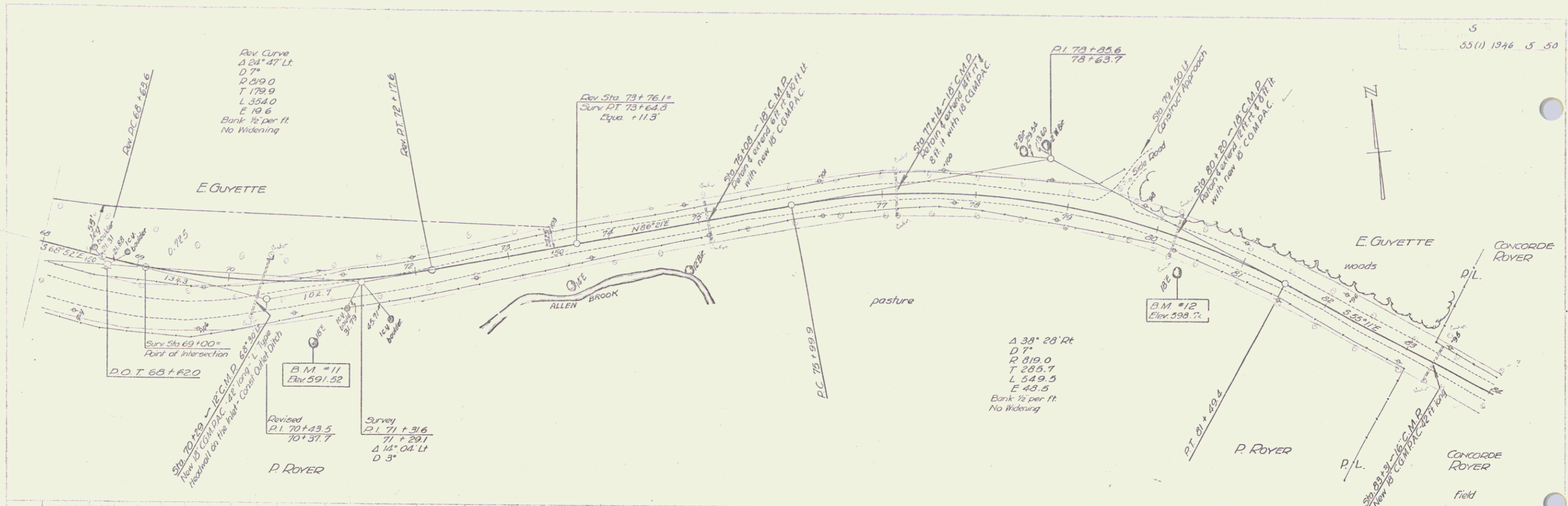
THESE PLANS ARE SUBJECT TO SUCH REVISIONS AS MAY BE REQUIRED BY THE PUBLIC ROADS ADMINISTRATION OR THE COMMISSIONER OF HIGHWAYS.
CONSTRUCTION IS TO BE CARRIED ON IN ACCORDANCE WITH THE PLANS AND THE STANDARD ROAD AND BRIDGE SPECIFICATIONS OF 1936, AS APPROVED DECEMBER 29TH, 1936 BY THE PUBLIC ROADS ADMINISTRATION, INCLUDING ALL SUBSEQUENT APPROVED REVISIONS AND SUCH REVISED SPECIFICATIONS AND SPECIAL PROVISIONS AS ARE SUBMITTED WITH THE PLANS.

APPROVED MARCH 26, 1947
HIGHWAY ENGINEER
APPROVED APRIL 10, 1947
DISTRICT HIGHWAY COMMISSIONER
SERIES S NO 55(A)
SHEET 1 OF 5

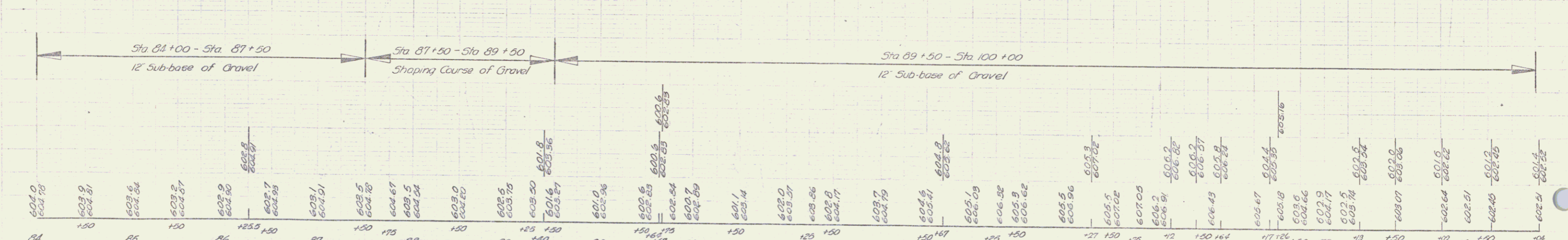
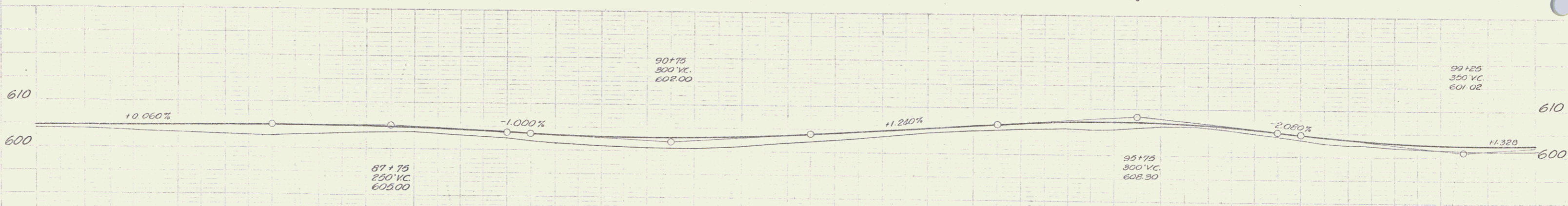
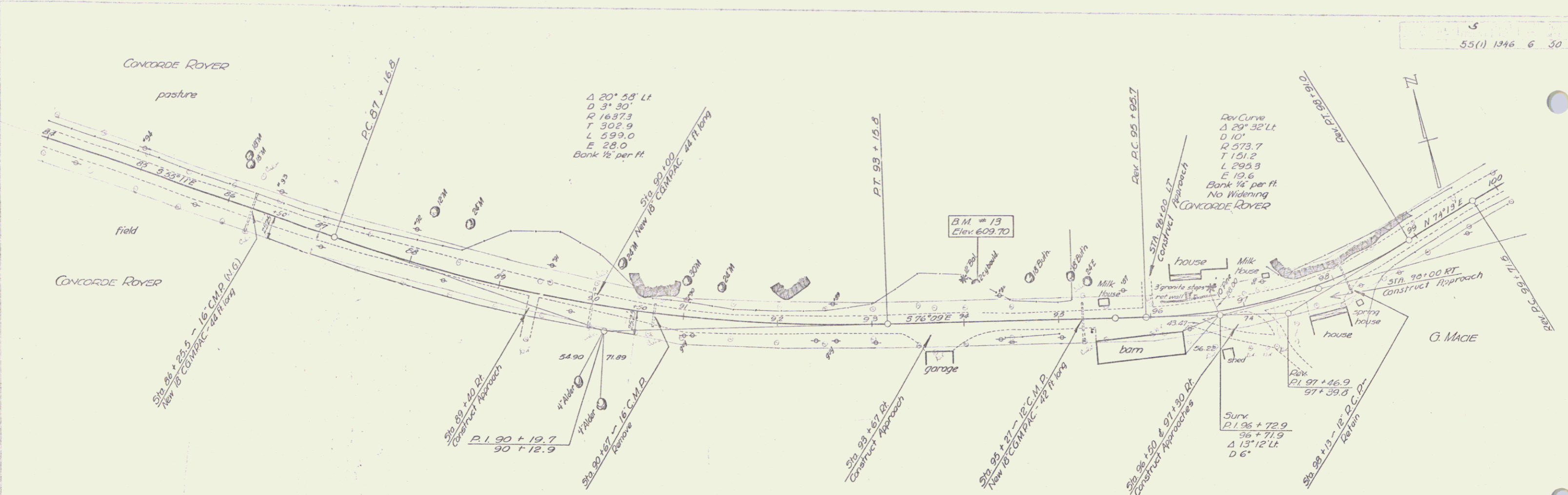
Pin# 00R 329

Irasburg

Sounding 1946
 TRILED ROBERTS 1946



SPROUTING
1946
ROGERS 1946
TRAISED



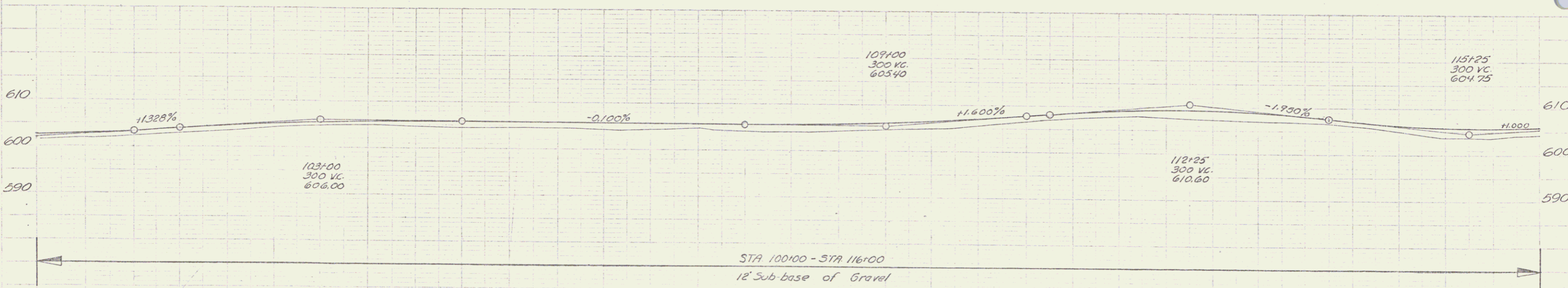
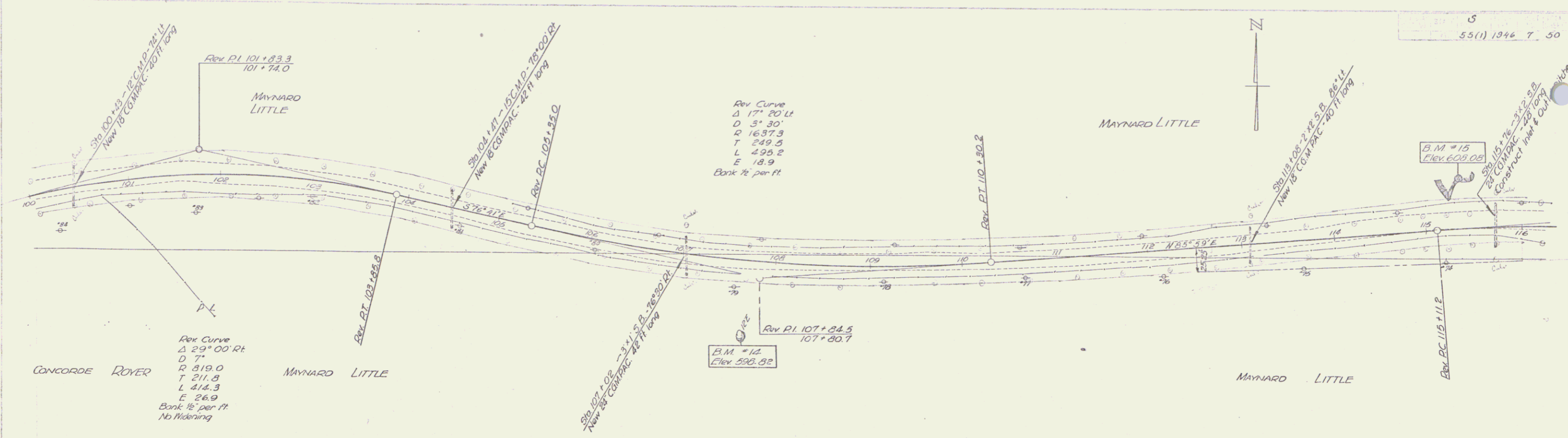
B.M. #13 - Spot on boulder 35 ft Lt of Sta. 94+15 Elev. 609.70

series 5 no 55(1) sheet 6 of 50 sheets IRASBURG

PLAN
 1946
 1946
 REBERS
 TRACED

PLAN
 1946
 1946
 REBERS
 TRACED

5
 55(1) 1946 7 50



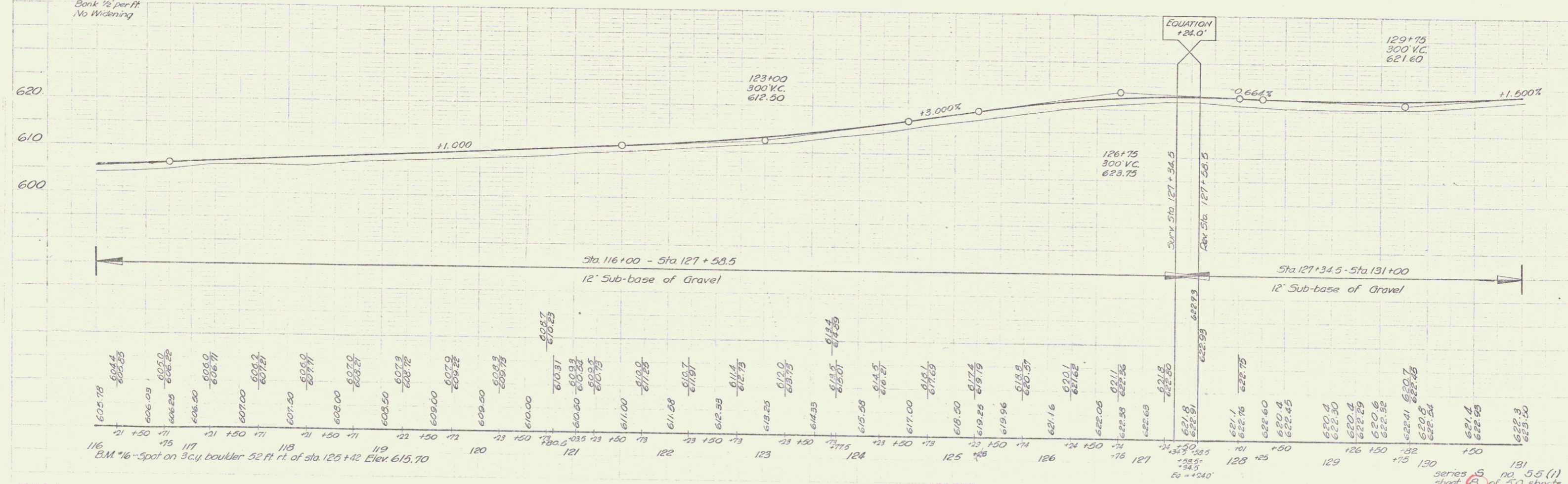
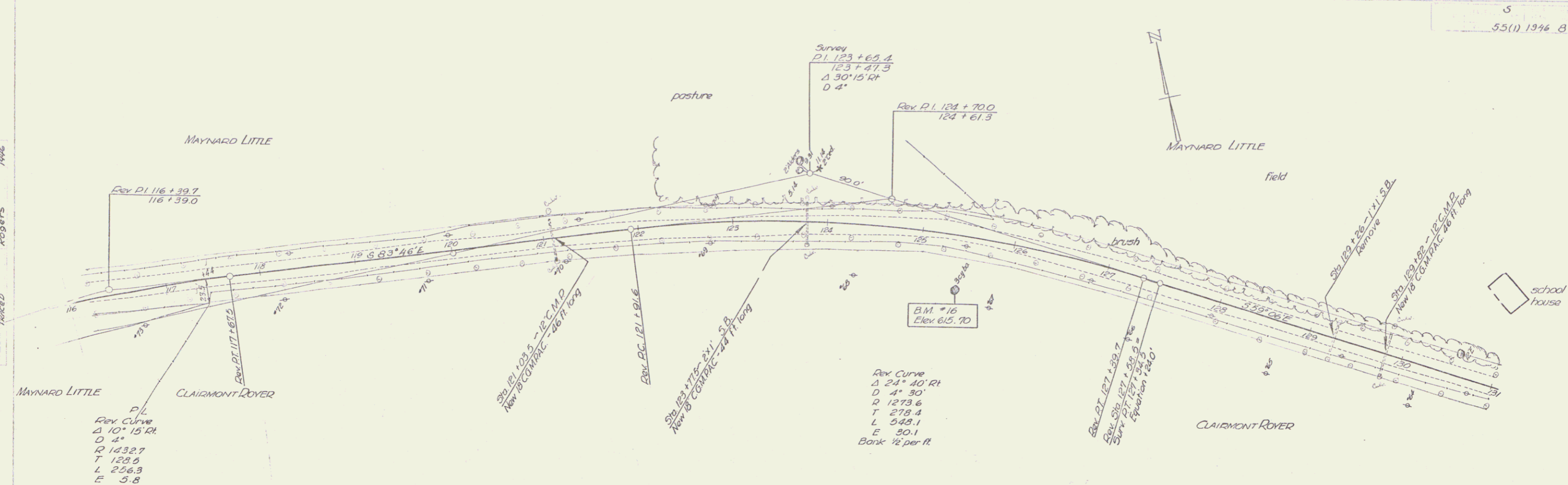
Station	Elevation
100+00	604.32
100+10	604.32
100+20	604.32
100+30	604.32
100+40	604.32
100+50	604.32
100+60	604.32
100+70	604.32
100+80	604.32
100+90	604.32
101+00	604.32
101+10	604.32
101+20	604.32
101+30	604.32
101+40	604.32
101+50	604.32
101+60	604.32
101+70	604.32
101+80	604.32
101+90	604.32
102+00	604.32
102+10	604.32
102+20	604.32
102+30	604.32
102+40	604.32
102+50	604.32
102+60	604.32
102+70	604.32
102+80	604.32
102+90	604.32
103+00	604.32
103+10	604.32
103+20	604.32
103+30	604.32
103+40	604.32
103+50	604.32
103+60	604.32
103+70	604.32
103+80	604.32
103+90	604.32
104+00	604.32
104+10	604.32
104+20	604.32
104+30	604.32
104+40	604.32
104+50	604.32
104+60	604.32
104+70	604.32
104+80	604.32
104+90	604.32
105+00	604.32
105+10	604.32
105+20	604.32
105+30	604.32
105+40	604.32
105+50	604.32
105+60	604.32
105+70	604.32
105+80	604.32
105+90	604.32
106+00	604.32
106+10	604.32
106+20	604.32
106+30	604.32
106+40	604.32
106+50	604.32
106+60	604.32
106+70	604.32
106+80	604.32
106+90	604.32
107+00	604.32
107+10	604.32
107+20	604.32
107+30	604.32
107+40	604.32
107+50	604.32
107+60	604.32
107+70	604.32
107+80	604.32
107+90	604.32
108+00	604.32
108+10	604.32
108+20	604.32
108+30	604.32
108+40	604.32
108+50	604.32
108+60	604.32
108+70	604.32
108+80	604.32
108+90	604.32
109+00	604.32
109+10	604.32
109+20	604.32
109+30	604.32
109+40	604.32
109+50	604.32
109+60	604.32
109+70	604.32
109+80	604.32
109+90	604.32
110+00	604.32
110+10	604.32
110+20	604.32
110+30	604.32
110+40	604.32
110+50	604.32
110+60	604.32
110+70	604.32
110+80	604.32
110+90	604.32
111+00	604.32
111+10	604.32
111+20	604.32
111+30	604.32
111+40	604.32
111+50	604.32
111+60	604.32
111+70	604.32
111+80	604.32
111+90	604.32
112+00	604.32
112+10	604.32
112+20	604.32
112+30	604.32
112+40	604.32
112+50	604.32
112+60	604.32
112+70	604.32
112+80	604.32
112+90	604.32
113+00	604.32
113+10	604.32
113+20	604.32
113+30	604.32
113+40	604.32
113+50	604.32
113+60	604.32
113+70	604.32
113+80	604.32
113+90	604.32
114+00	604.32
114+10	604.32
114+20	604.32
114+30	604.32
114+40	604.32
114+50	604.32
114+60	604.32
114+70	604.32
114+80	604.32
114+90	604.32
115+00	604.32
115+10	604.32
115+20	604.32
115+30	604.32
115+40	604.32
115+50	604.32
115+60	604.32
115+70	604.32
115+80	604.32
115+90	604.32
116+00	604.32

B.M. #14 - 5.1 T. 12' E. of Sta. 107+16.5 Elev. 598.82
 B.M. #15 - Spot on ledge 50 Ft. N. of Sta. 115+34 Elev. 608.08

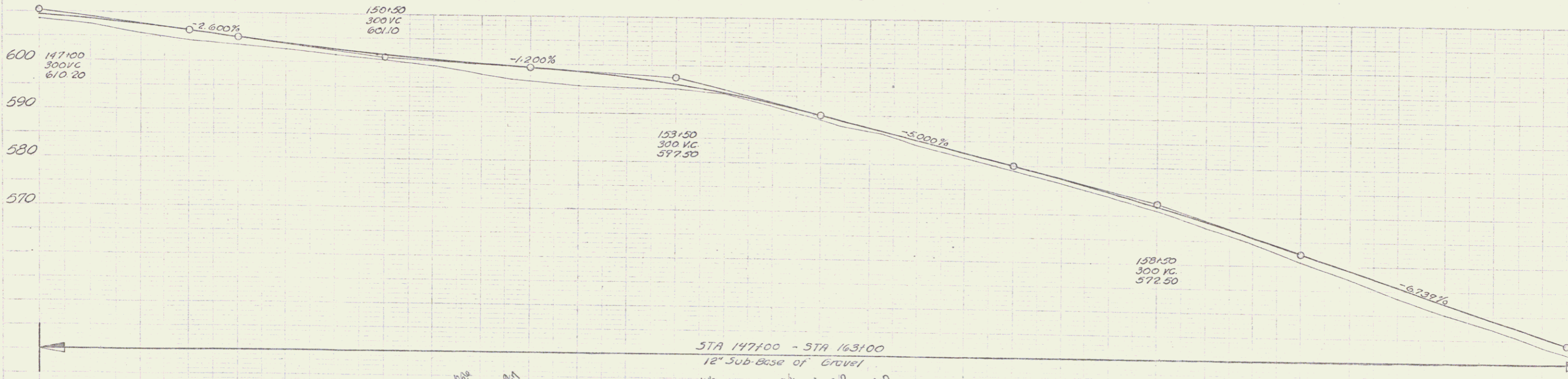
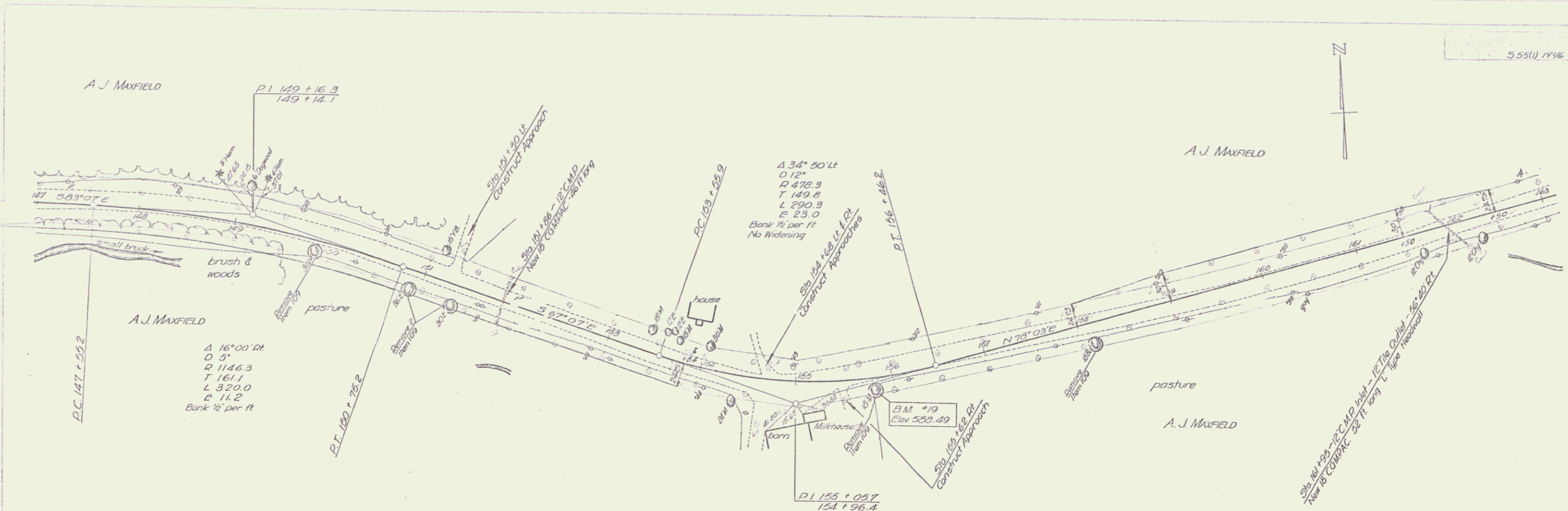
Series 55(1)
 sheet 7 of 50 sheets
 REBERS

5

Spaulding Ave
Rogers Ave

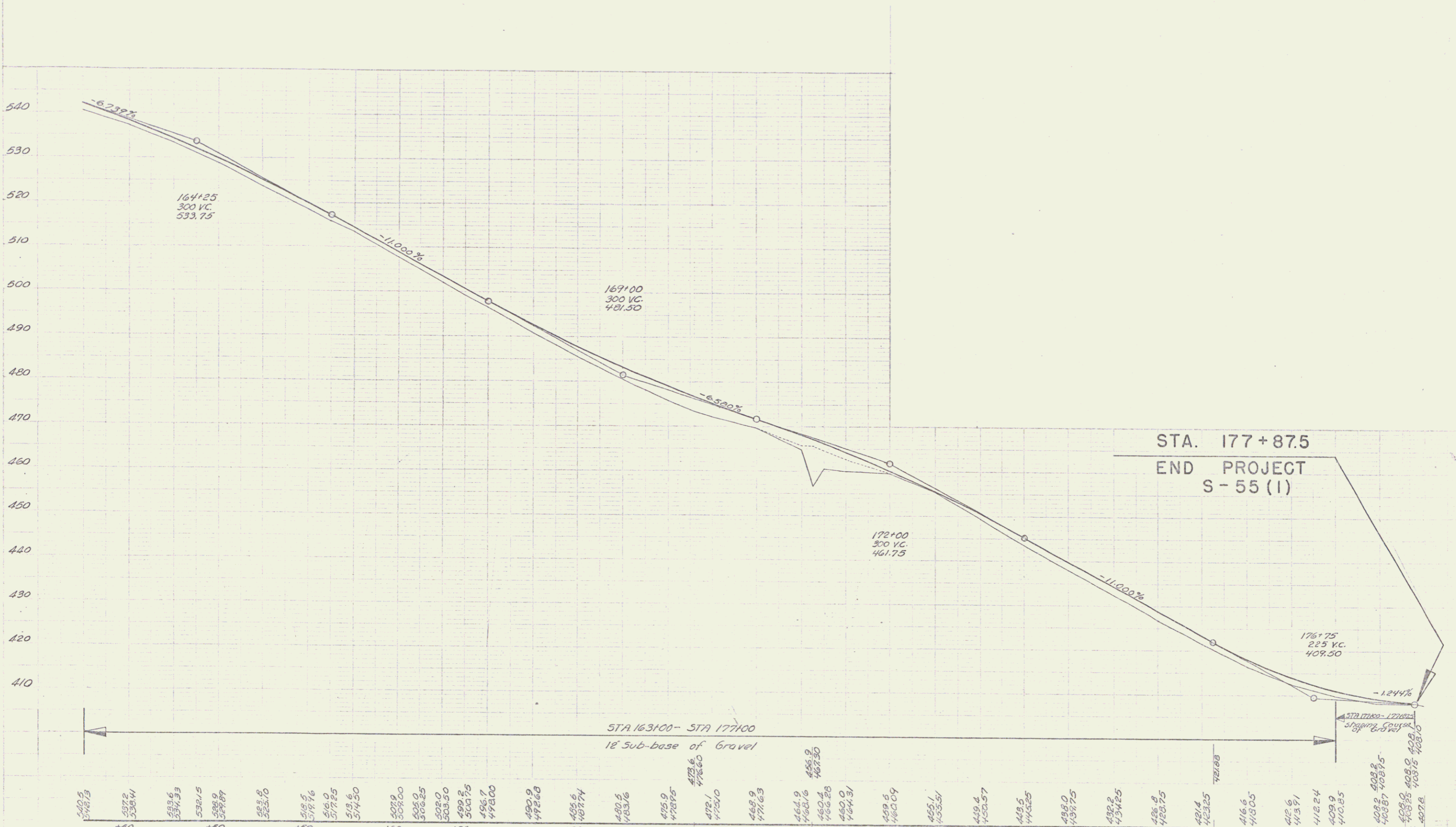


1946
Spaulding
1946
Rogers
TRACED



Station	Elevation
147	608.5
147	609.25
148	607.4
148	608.00
148	607.7
148	607.52
149	604.2
149	606.50
149	603.4
149	605.00
150	602.6
150	603.76
150	601.6
150	602.84
150	600.4
150	601.63
151	599.4
151	600.74
151	598.5
151	600.2%
152	597.9
152	597.7%
152	595.5
152	597.20
153	595.7
153	598.54
154	595.1
154	596.07
154	594.5
154	594.95
154	594.2
154	594.56
155	591.9
155	592.34
155	591.54
155	590.00
155	592.25
155	587.9
155	588.00
156	585.7
156	587.20
156	586.70
156	584.0
156	585.00
157	581.4
157	583.50
157	579.0
157	580.00
158	576.6
158	577.43
159	573.9
159	574.21
159	571.0
159	571.85
159	567.7
159	568.84
160	564.4
160	565.69
160	562.0
160	562.59
161	557.2
161	557.02
161	553.6
161	553.65
162	550.2
162	552.28
162	547.1
162	547.25
163	543.7
163	543.54
163	543.86
163	542.5
163	542.75

series sheet (10) of 50 sheets IRASBURG



163 B.M. *20 - 5.12, 24 Elm 25 ft. ft. of sta. 164+92 Elev. 532.74
 B.M. *21 - 5.12, 24 Maple 27 ft. ft. of sta. 171+03 Elev. 466.44
 B.M. *22 - 5.12, 15 Elm 41 ft. ft. of sta. 173+08 Elev. 429.07

Series 3 no. 55(1)
 sheet 12 of 50 sheets
 IRASBURG