

INDEX OF SHEETS

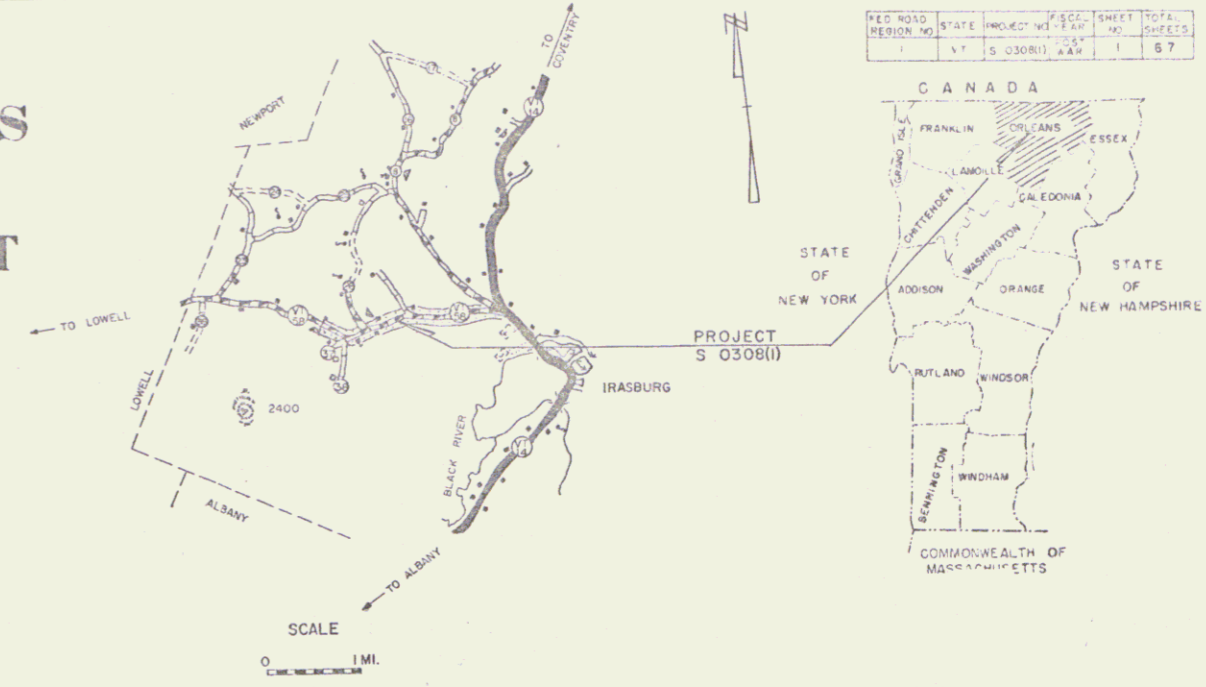
1. TITLE
2. TYPICAL CROSS SECTION OF IMPROVEMENT (12" Bituminous Concrete Pavement Item 361-B, TOP COURSE ONLY)
3. QUANTITY SHEET
- 4-6. EARTHWORKS
7. A-51 TYPICAL ROCK CUTS
8. B-1 FINISHING TABLES
9. E-5 TYPICAL SLOPE GRADING
10. E-6 MUCK EXCAVATION
11. C-1 TIMBER CURB
12. C-2 HEADWALLS
13. C-3 UNDERPAIN FLUSHING PASHIS
14. C-15 DROP INLET
15. E-1 FABRICATED SIGNS AND LIGHTS
16. E-31 FEDERAL AID CONSTRUCTION IDENTIFICATION SIGNS
17. C-2A TWO CABLE GUARD RAIL
18. G-4 MARKER POSTS AND GUIDE POSTS
19. J-1 PROJECT MARKERS AND BOUNDARY MARKERS
- 20-26. PLAN AND PROFILE SHEETS
27. DETAILS OF 100"x120" FL. PIPE AT STA. 422+66
- 28-33. DETAILS OF 100"x90" FL. PIPE AT STA. 421+00
- 30-32. CROSS SECTIONS
33. FINISHING TRANSITION DIAGRAMS
- 34-37. CHANNEL SECTIONS
- 38-39. T.W. DETAIL
40. B-10 EMBANKMENT ON A SLOPE
41. SLOPE STABILIZATION
42. T.W. DETAIL AND DRAINAGE SHEET

Sheets Added in Finals
 67-C Final Earthworks
 32-34 Revised Sections
 10 Sheets Drainage
 6 Sheets Lodge Sections
 2 Sheets Sawville Borrow Pits
 2 Sheets Proposed Underdrains

STATE OF VERMONT
 DEPARTMENT OF HIGHWAYS
PROPOSED IMPROVEMENT
 FEDERAL AID SECONDARY PROJECT

TOWN OF IRASBURG
 COUNTY OF ORLEANS
LOWELI - IRASBURG ROAD
VT. ROUTE #58

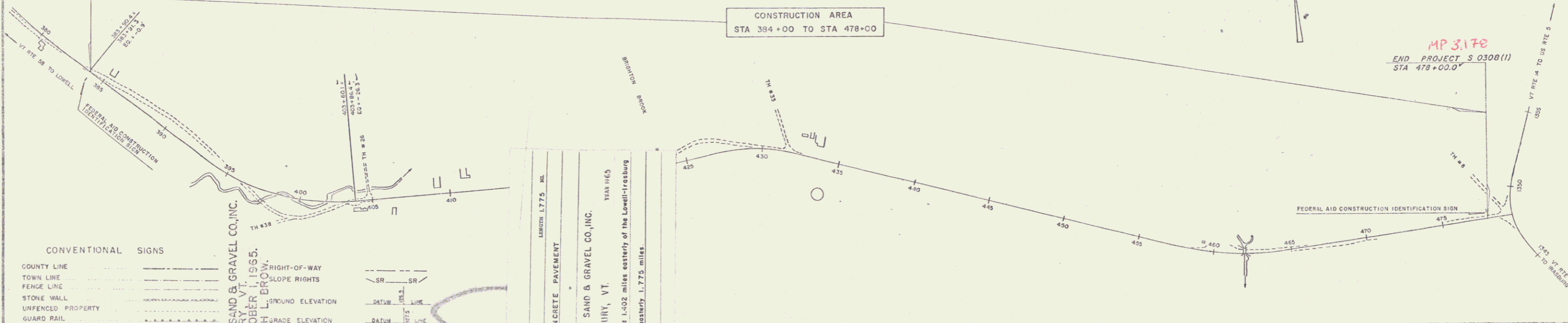
BEGINNING AT A POINT 1.402 MILES EASTERLY OF THE LOWELI-IRASBURG TOWN LINE AND EXTENDING EASTERLY 1.775 MILES
 LENGTH OF PROJECT 9373.7 ft = 1.775 mi.



PROJECT NAME AND NUMBER	TYPE	PAVT.	AREA.
IRASBURG S 0308(1)	BITUMINOUS CONC.	22,914 S.Y.	
RECORD PLANS MATERIALS			
SUBBASE OF GRAVEL - SANVILLE PITS & DEAN PIT - IRASBURG, VT.			
SUBBASE OF SAND - SAWVILLE BORROW PIT - IRASBURG, VT.			
CUTBACK ASPHALT - MOBIL OIL CO. - EAST PROVIDENCE, R.I.			
BITUMINOUS CONCRETE PAVEMENT - L.M. PIKE & SON (PLANT) - COVENTRY, VT.			
CONCRETE CLASS "B" - A.C. ANDERSON - WATERBURY & JOHNSON, VT. & CALEDONIA SAND & GRAVEL CO., INC. - ST. JOHNSBURY, VT.			
METAL CULVERTS - NEW ENGLAND METAL CULVERT CO. - WHITE RIVER JUNCTION, VT.			
REINFORCED CONCRETE PIPE, TWO CABLE GUARD RAIL, WOOD GUIDE & MARKER POSTS, TREATED			
NOTE: BENCH MARK DATA BASED ON USGS ELEVATIONS			
REINFORCING STEEL - REPUBLIC STEEL CORR. - BOSTON, MASS.			
PRECAST REINF. CONC. CURB DROP INLET - CALEDONIA SAND & GRAVEL CO., INC. - ST. JOHNSBURY, VT.			
CONTRACTOR - CALEDONIA SAND & GRAVEL CO., INC. - ST. JOHNSBURY, VT.			
CONTRACT DATED - APRIL 20, 1965.			
STARTED - APRIL 27, 1965.			
COMPLETED - OCTOBER 1, 1965.			
ACCEPTED - OCTOBER 1, 1965.			
RESIDENT ENGINEER - RUDOLPH L. BROW, ST. JOHNSBURY, VT.			
INSPECTOR - HARRY D. NILES.			
RECORD PLANS - RUDOLPH L. BROW.			

1961	ADT 200
1965	ADT 360
1965	DHV 75
	D = 66%
	T = 8%
	V = 50 MPH

RIGHT-OF-WAY DIVISION
 TOWN FILE
 PERPETUAL
 Town of Ut-58
 (To Be Returned To R.O.W. Division)



CONVENTIONAL SIGNS

COUNTY LINE	RIGHT-OF-WAY
TOWN LINE	SLOPE RIGHTS
FENCE LINE	GROUND ELEVATION
STONE WALL	DATUM
UNFENCED PROPERTY	GRADE ELEVATION
GUARD RAIL	CURVE DATA
TRAVELED WAY	DEFLECTION OF ANGLE
RAILROAD	DEGREE OF CURVE
RETAINING WALL	RADIUS OF CURVE
CENTER LINE	TANGENT DISTANCE
SURVEY LINE	LENGTH OF CURVE
CULVERT	EXTERNAL DISTANCE
DROP INLET	POINT OF INTERSECTION
TROLLEY POLE	POINT OF CURVE
POWER POLE	POINT OF TANGENT
TELEPHONE POLE	POINT ON TANGENT
TREES	POINT ON SUB-TANGENT
HEDGE	

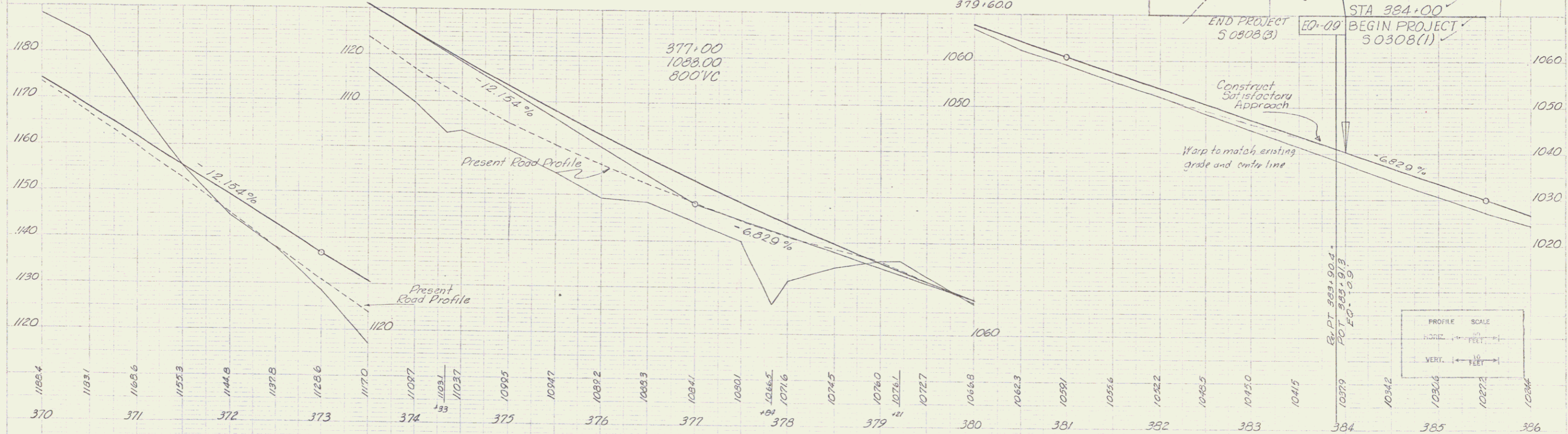
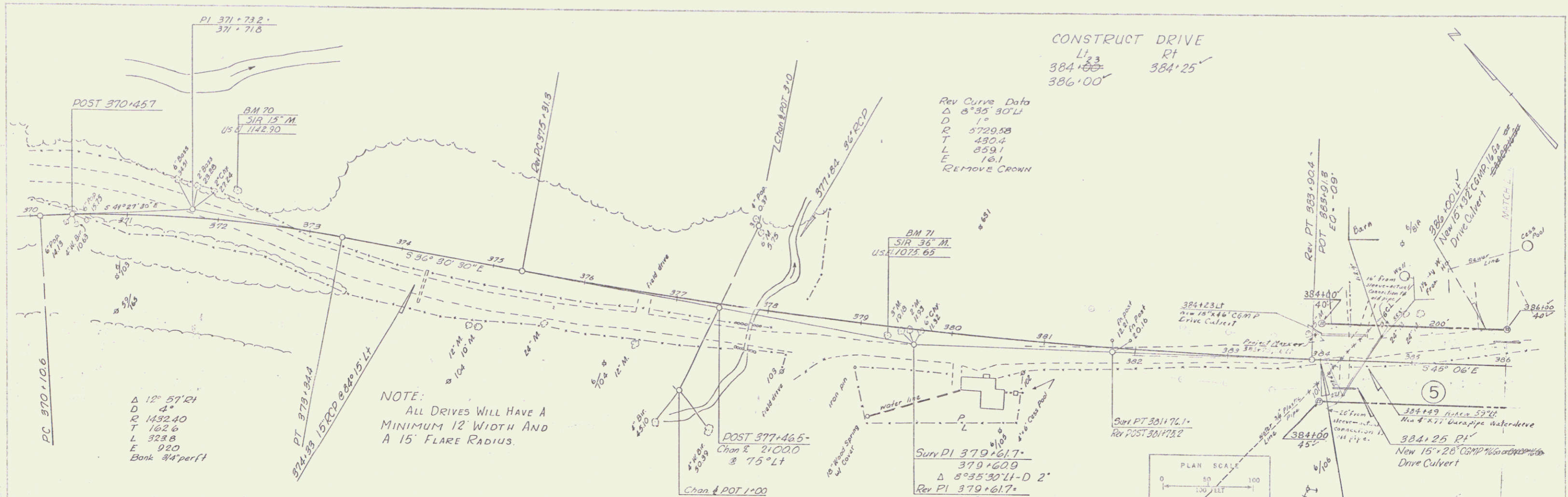
PROJECT IRASBURG
 NUMBER S 0308 (1)
 TYPE BITUMINOUS CONCRETE PAVEMENT
 CONTRACTOR CALEDONIA SAND & GRAVEL CO., INC.
 ST. JOHNSBURY, VT.
 YEAR 1965
 LOCATION Beginning of a point 1.402 miles easterly of the Lowell-Irasburg Town Line and extending easterly 1.775 miles.

THESE PLANS ARE SUBJECT TO SUCH REVISIONS AS MAY BE REQUIRED BY THE BUREAU OF PUBLIC ROADS OR THE COMMISSIONER OF HIGHWAYS.
 CONSTRUCTION IS TO BE CARRIED ON IN ACCORDANCE WITH THESE PLANS AND THE STANDARD SPECIFICATIONS FOR HIGHWAY AND BRIDGE CONSTRUCTION, DATED APRIL 1964, AS APPROVED BY THE BUREAU OF PUBLIC ROADS ON OCTOBER 12, 1964, INCLUDING ALL SUBSEQUENT APPROVED REVISIONS AND SUCH REVISED SPECIFICATIONS AND SPECIAL PROVISIONS AS ARE INCORPORATED IN THESE PLANS.

APPROVED <i>R. L. Brow</i> ASST. CHIEF ENGINEER DATE 10/15/65	APPROVED <i>R. L. Brow</i> CHIEF ENGINEER DATE 9/23/65	APPROVED <i>E. J. Kelley</i> CONSTRUCTION ENGINEER DATE 9/23/65	APPROVED <i>Sanborn</i> BRIDGE ENGINEER DATE 9/23/64	APPROVED <i>Pharm</i> DISTRICT ENGINEER DATE 9/23/64	APPROVED <i>W. M. Lane</i> PROJECT ENGINEER DATE 9/23/64	APPROVED <i>G. O. P. Bishop</i> DEPT. ENGINEER DATE 11/16/65
---	--	---	--	--	--	--

DEPARTMENT OF COMMERCE
 BUREAU OF PUBLIC ROADS
 Pin #00R 327
 APPROVED
 DIVISION ENGINEER DATE
 PROJECT S. NO. 0308(1)
 SHEET 1 OF 67 SHEETS

Ut 58



IRASBURG
 Project 5 No. 0308(1)
 Sheet 20 of 67

CONSTRUCT DRIVE
 Lt 390+70
 Rt 392+66
 398+32
 399+70
 TREATED TIMBER CURB
 (PAVE SHOULDER FULL WIDTH)
 Lt 398+60-402+00

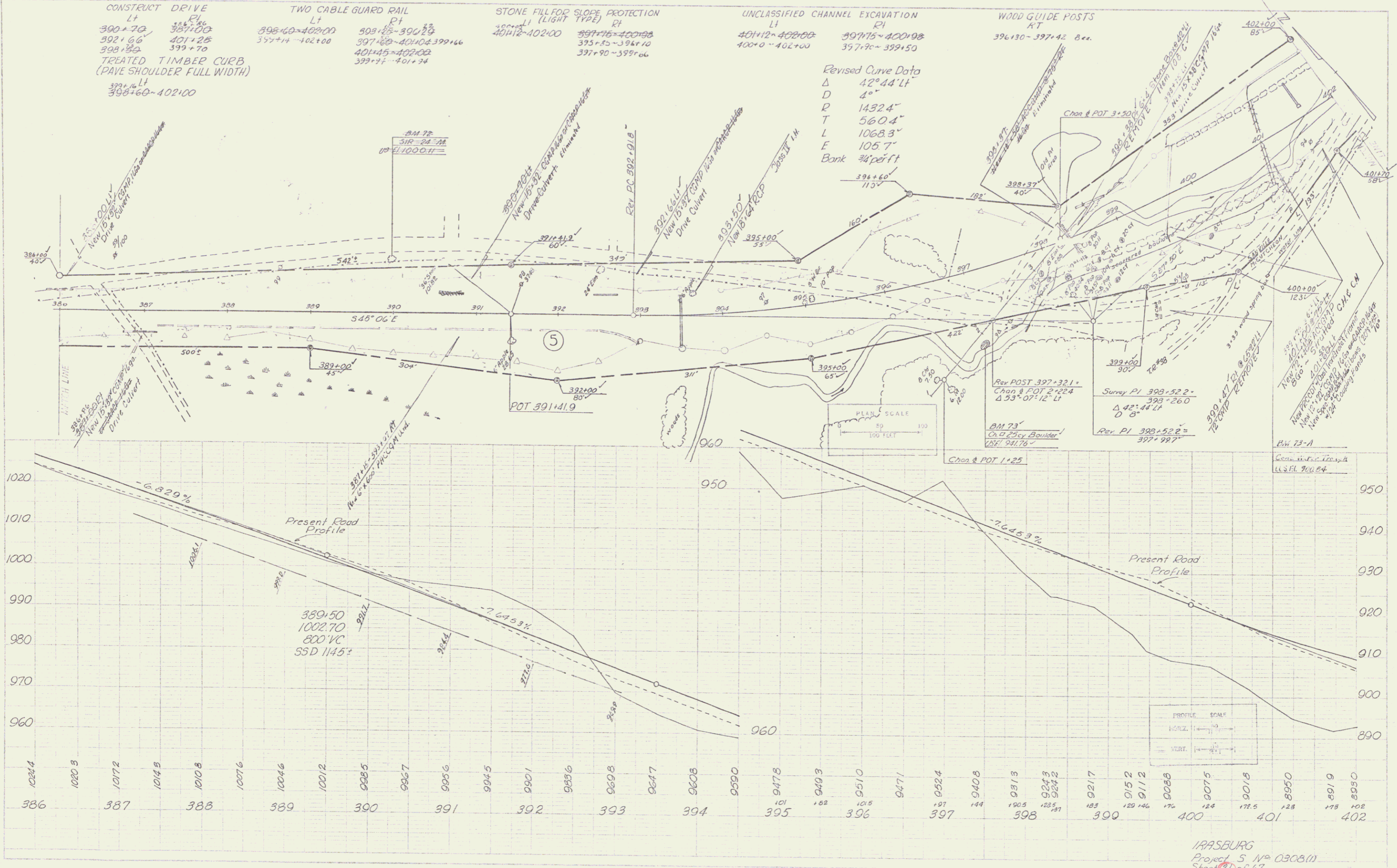
TWO CABLE GUARD RAIL
 Lt 398+60-402+00
 Rt 393+25-396+29
 397+20-401+02
 401+45-402+00
 399+27-401+34

STONE FILL FOR SLOPE PROTECTION
 Lt (LIGHT TYPE) 401+12-402+00
 Rt 397+75-400+25
 395+25-396+10
 397+90-399+06

UNCLASSIFIED CHANNEL EXCAVATION
 Lt 401+12-402+00
 Rt 397+75-400+25
 395+25-396+10

WOOD GUIDE POSTS
 Rt 396+30-397+42 8 ea.

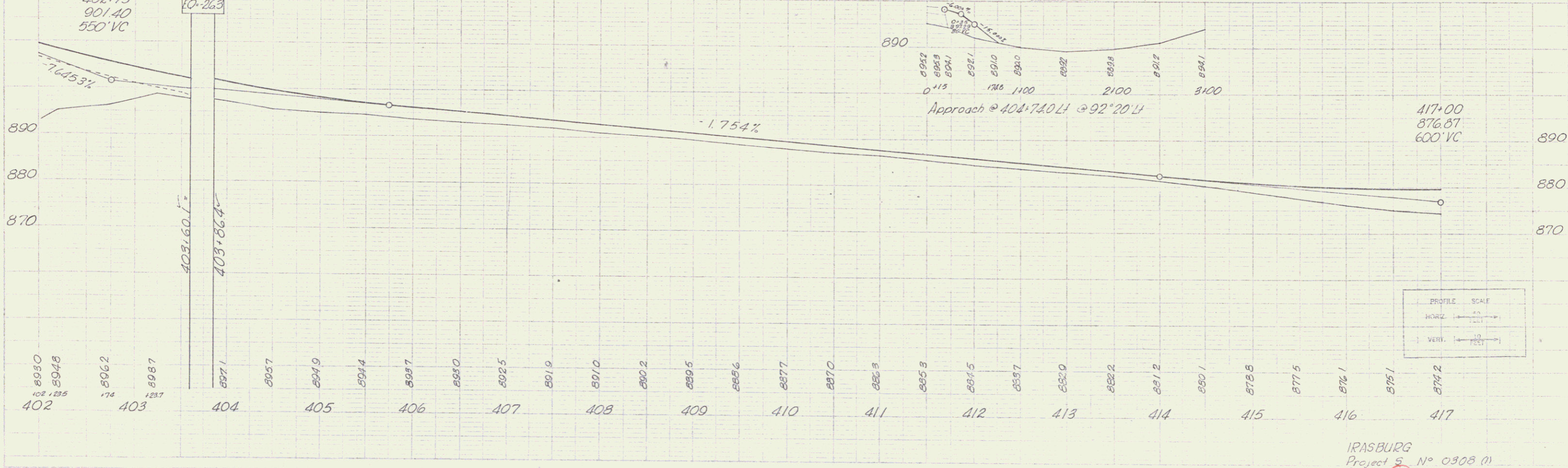
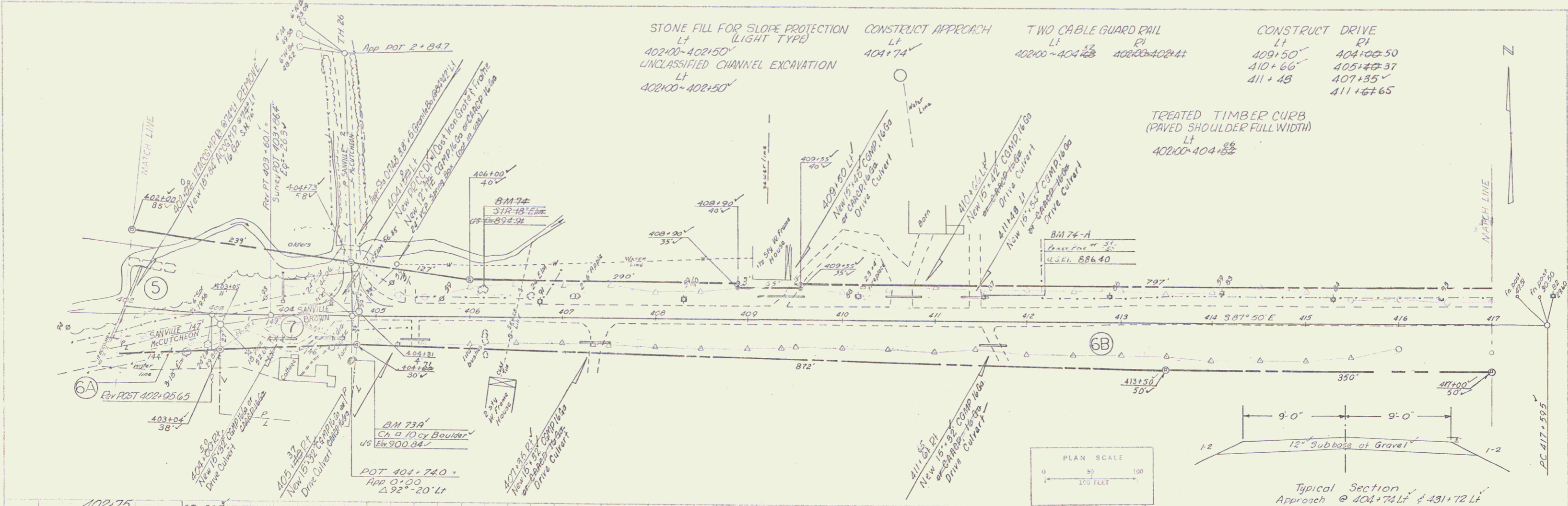
Revised Curve Data
 Δ 42°44' Lt
 D 4°
 P 1432.4'
 T 560.4'
 L 1068.3'
 E 105.7'
 Bank 3/4' per ft



PLAN SCALE
 1" = 100'

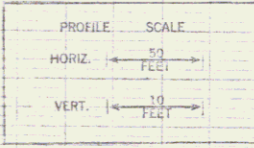
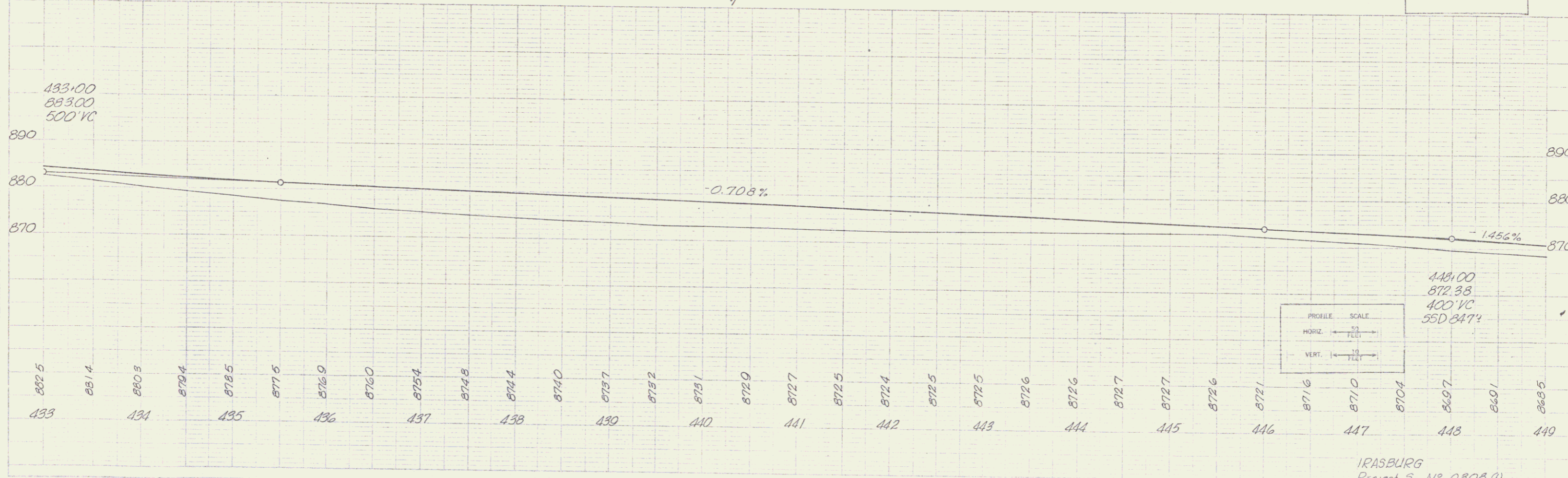
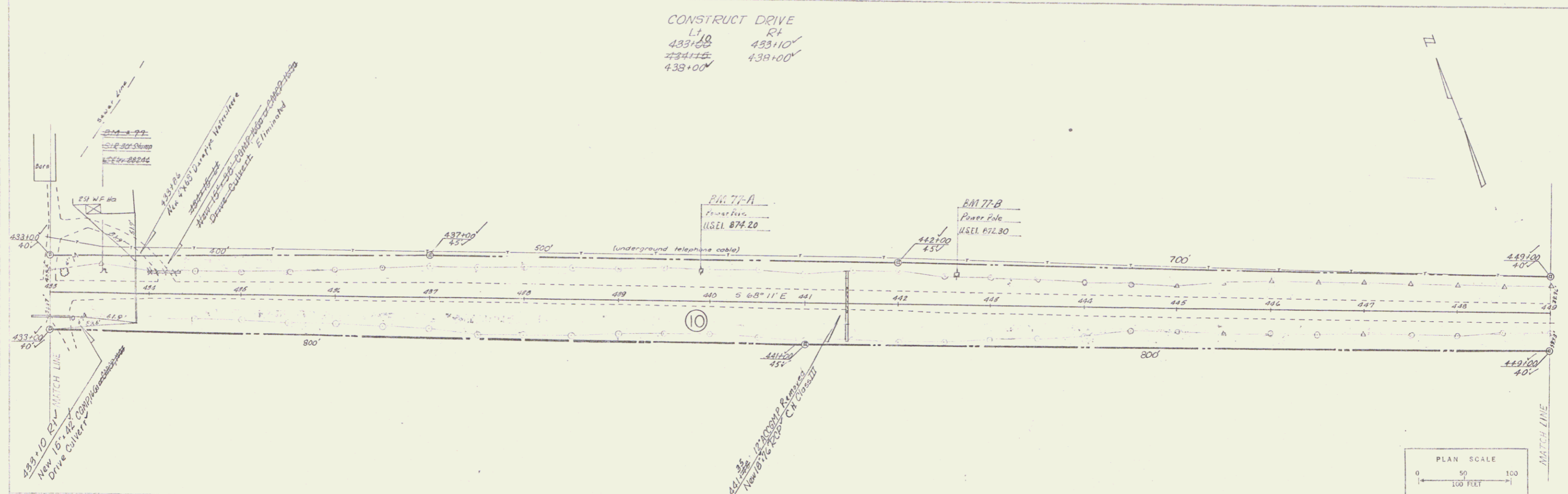
PROFILE SCALE
 1" = 10'

IRASBURG
 Project 5 No 0308(1)
 Sheet 21 of 67

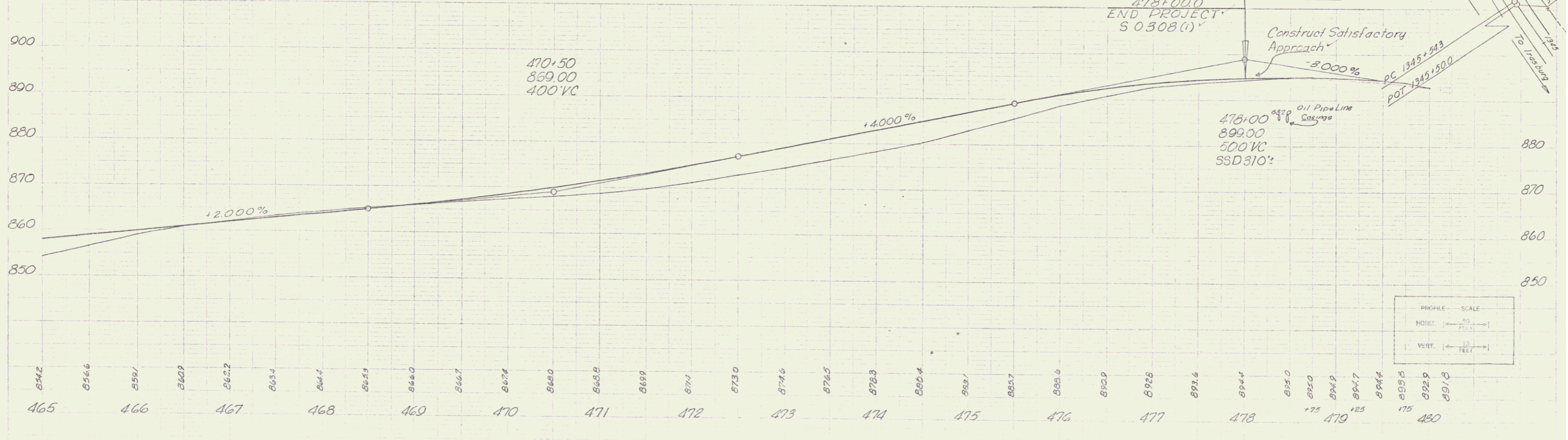
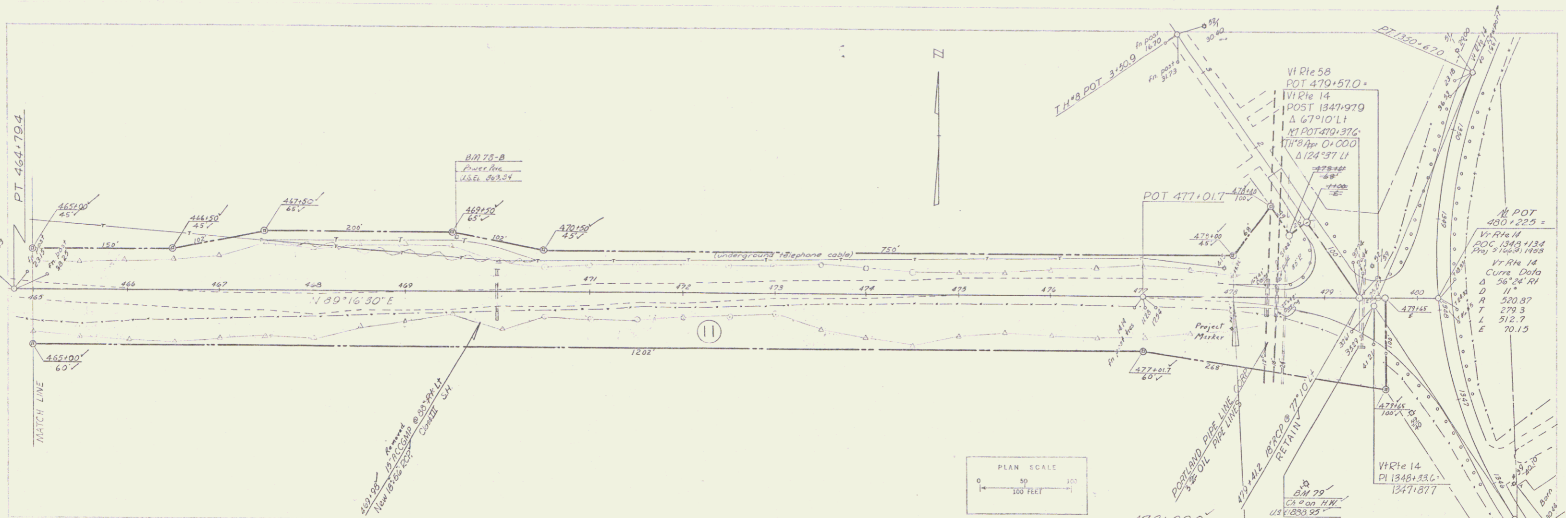


IRASBURG
 Project 5 No 0308 (1)
 Sheet 22 of 47

CONSTRUCT DRIVE
 Lt 433+00 Rt 433+10
 434+15 438+00
 438+00 438+00

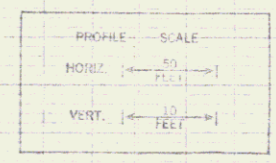
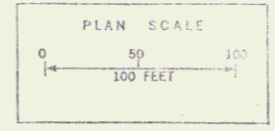


IRASBURG
 Project 5 No 0303.01
 Sheet 24 of 67



4-62
1-63
F.M.
1-63

4-62
1-63
F.M.
1-63



IRASBURG
Project S. N. O. 308(1)
Sheet 26 of 67