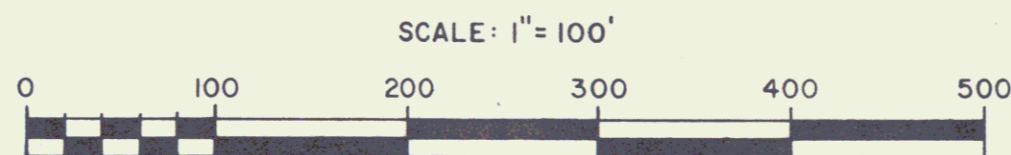
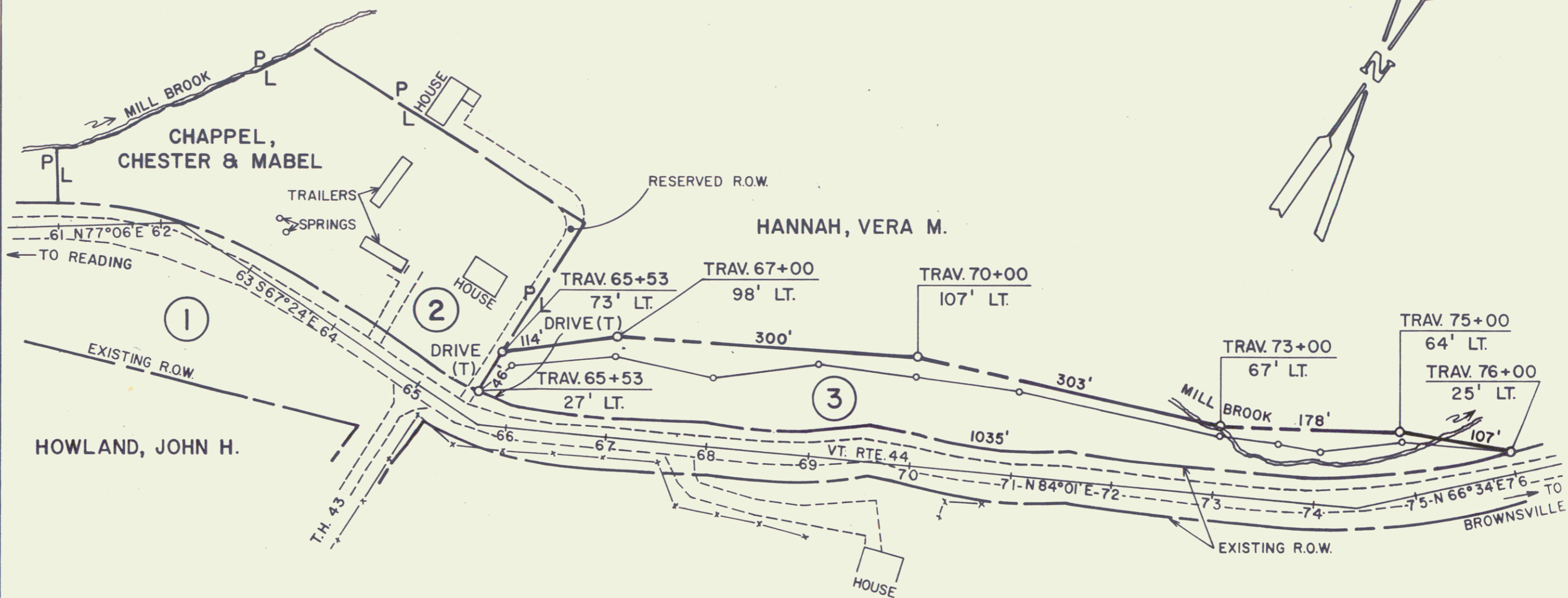


VERA M. HANNAH TO STATE OF VERMONT
 BY WD 11/21/80 REC'D IN 26/211
 WEST WINDSOR L.R.



NO.	GRANTOR	BEG. STA.	END STA.	TAKE	TITLE	BK.	PG.	REMARKS
1	STATE OF VERMONT				W.D.	23	142-3	HOWLAND, JOHN H.
2	CHAPPEL, CHESTER & MABEL	TRAV. 65+45 LT.			REL.			DRIVE RT. (T)
3	HANNAH, VERA M.	TRAV. 65+53 LT. TRAV. 65+63 LT.	TRAV. 76+00 LT.	1.4 A±	W.D.			DRIVE RT.(T)(15' WIDE)

REVISIONS

Rev. #1 Parcel 2, Deleted Take Added Drive (T) Per C.O. # 4785

Rev. #2 Parcel 3, HANNAH, Deleted ALL R.T. & I. To R.O.W. Per C.O. # 4795

Rev. #3 Parcel #3 Hannah, Added DRIVE RT.(T) AS SET A.T. TRAV. 65+63 LT. Per C.O. # 4811

STATE OF VERMONT
 AGENCY OF TRANSPORTATION

SHEET 2

TOWN OF WEST WINDSOR

PROJECT VT. RTE. 44

APPROX SCALE 1" = 100' DATE 7/15/80 DRAWN BY B.A.M.