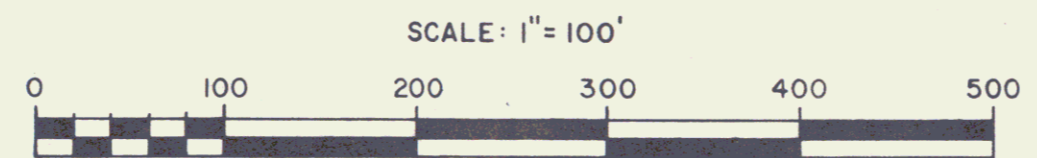
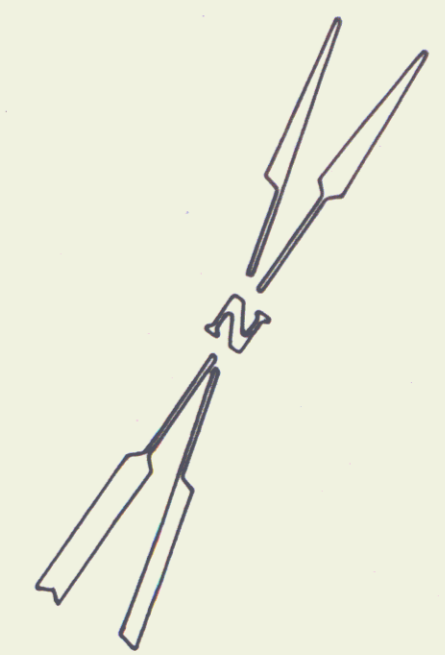
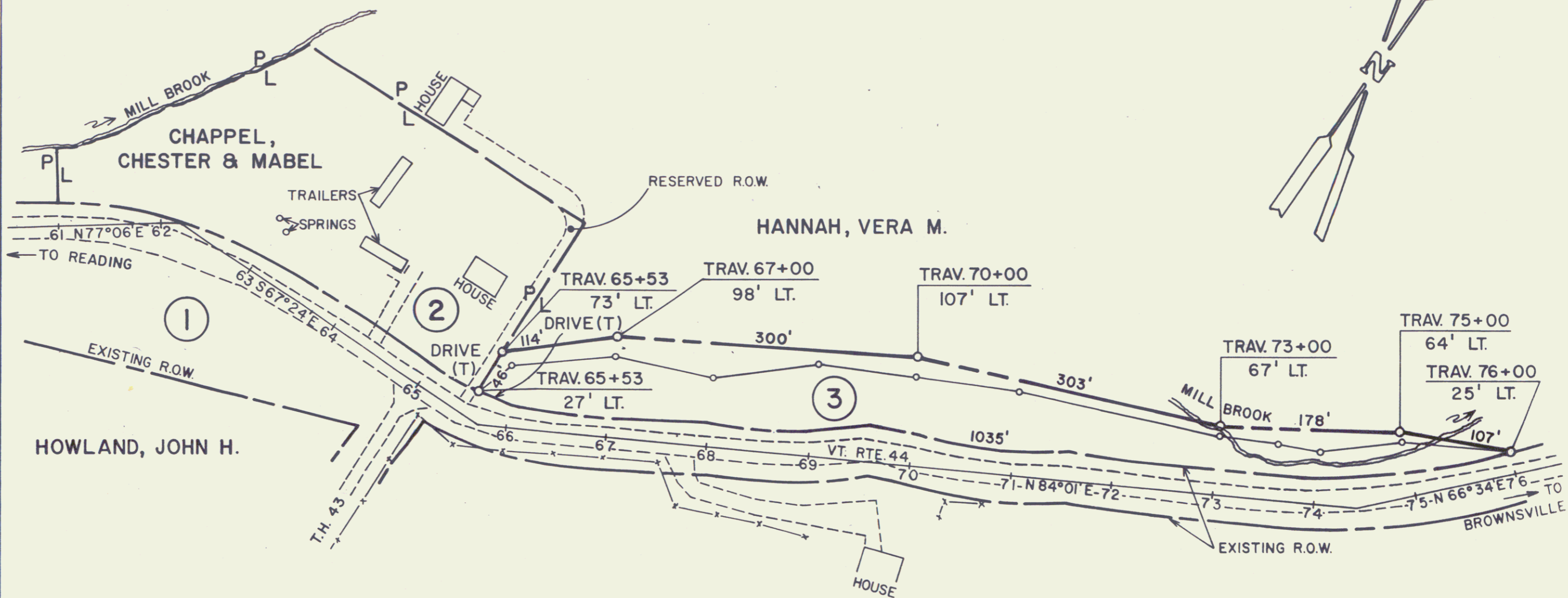


VERA M. HANNAH TO STATE OF VERMONT  
 BY WD 11/21/80 REC'D IN 26/211  
 WEST WINDSOR L.R.



| NO. | GRANTOR                  | BEG. STA.                          | END STA.        | TAKE   | TITLE | BK. | PG.   | REMARKS                |
|-----|--------------------------|------------------------------------|-----------------|--------|-------|-----|-------|------------------------|
| 1   | STATE OF VERMONT         |                                    |                 |        | W.D.  | 23  | 142-3 | HOWLAND, JOHN H.       |
| 2   | CHAPPEL, CHESTER & MABEL | TRAV. 65+45 LT.                    |                 |        | REL.  |     |       | DRIVE RT. (T)          |
| 3   | HANNAH, VERA M.          | TRAV. 65+53 LT.<br>TRAV. 65+63 LT. | TRAV. 76+00 LT. | 1.4 A± | W.D.  |     |       | DRIVE RT.(T)(15' WIDE) |

| REVISIONS   |
|---|
| Rev. #1 Parcel 2, Deleted Take Added Drive (T) Per C.O. # 4785                        |
| Rev. #2 Parcel 3, HANNAH, Deleted ALL R.T. & I. To R.O.W. Per C.O. # 4795             |
| Rev. #3 Parcel #3 Hannah, Added DRIVE RT.(T) AS SHOWN TRAV. 65+63 LT. Per C.O. # 4811 |

**STATE OF VERMONT**  
**AGENCY OF TRANSPORTATION**

SHEET **2**

**TOWN OF WEST WINDSOR**

PROJECT **VT. RTE. 44**

APPROX SCALE 1" = 100'    DATE 7/15/80    DRAWN BY B.A.M.