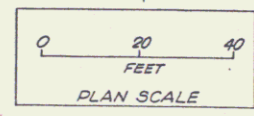
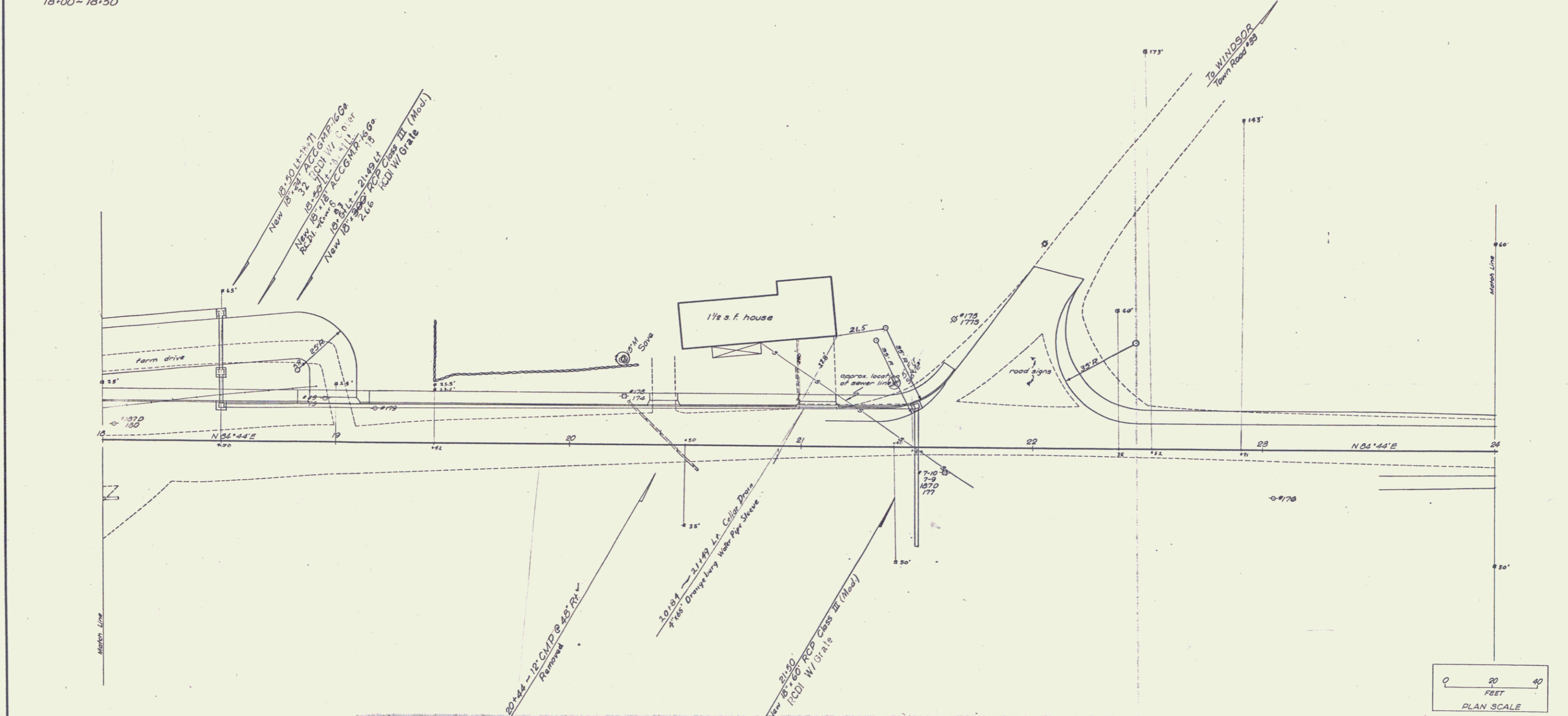


ONE COURSE 5" CEMENT CONCRETE SIDEWALK (5'-0") Rt 18+00-18+82 Lt 19+14-21+52.70  
 CONSTRUCT DRIVE Rt Lt 18+00-19+00 22+44 21+00  
 CONSTRUCT APPROACH Rt Lt 21+90  
 CONSTRUCT GRANITE CURB Rt Lt 18+00-18+38.6 19+01-20+34.5 20+43-20+98.7 21+18-21+52.70  
 PAVED SHOULDERS Rt Lt 18+00-21+62  
 CONSTRUCT SPECIAL DITCH TO DRAIN WATER POCKET AT STA 23+50 ± Lt Rt 23+50 ±- 24+00  
 ONE COURSE 8" CEMENT CONCRETE SIDEWALK (5'-0") Rt Lt 18+82-19+14

CONSTRUCT PAVED GUTTER Rt Lt 18+00-18+50



SURVEYED BY Martin DATE 12-62  
 DRAWN BY B.R.S. DATE 1-64  
 TRACED BY C.E.H. DATE 1-64  
 WEST WINDSOR  
 PROJ S NO. 0148(2)  
 SHEET 25A OF 47