

INDEX OF SHEETS

SHEET NO. 1	TITLE PAGE
2	TYPICAL CROSS-SECTION OF IMPROVEMENT DOUBLE TRACK COAT OF REFINED TAR WITH SAND GRAVEL SEAL, ITEM 311-A
3	BANKING AND WIDENING TABLES
4	QUANTITY SHEET (ITEMS)
5	QUANTITY SHEET (DRAINAGE)
6-7	EARTHWORK SHEETS
8-11	PLAN AND PROFILE SHEETS
12	STANDARD STRUCTURE SHEET S 40 BARRICADES, SIGNS AND LIGHTS
13	STANDARD STRUCTURE SHEET CONSTRUCTION DETAILS DRAINAGE & MARKERS
13 A	STANDARD STRUCTURE SHEET CONSTRUCTION DETAILS C&P DITCHES
13 B	STANDARD STRUCTURE SHEET S 53-48 PRECAST REINFORCED CONC. PIPE DROP INLETS
14-25	CROSS SECTIONS

STANDARD STRUCTURE SHEET APPROVED BY THE CHIEF ENGINEER, VERMONT STATE DEPARTMENT OF HIGHWAYS.

S 40 JUNE 10, 1950

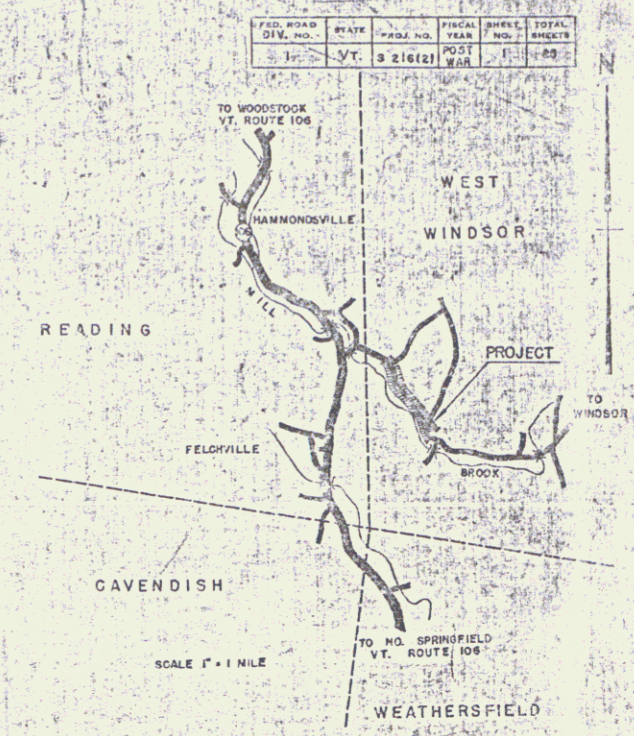
STATE OF VERMONT
STATE HIGHWAY DEPARTMENT

PLAN AND PROFILE OF PROPOSED
STATE HIGHWAY

TOWN OF WEST WINDSOR
COUNTY OF WINDSOR
VERMONT STATE AID ROUTE 1
FELCHVILLE-BROWNSVILLE ROAD

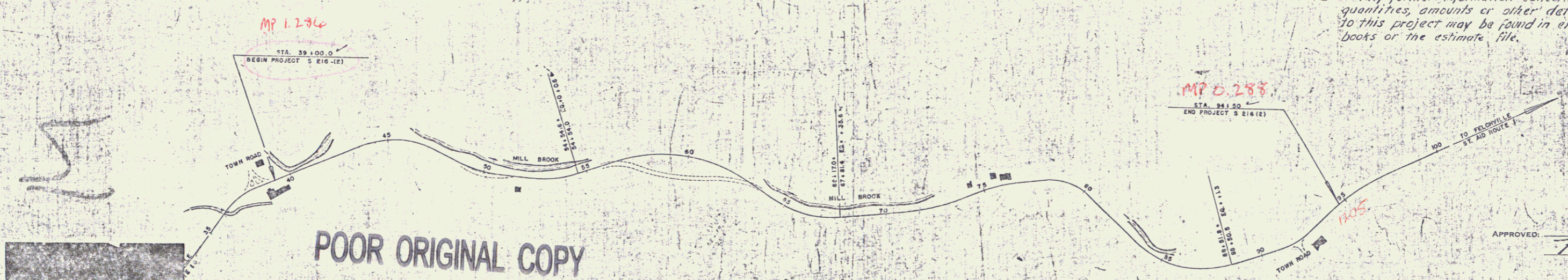
BEGINNING AT A POINT 1.29 MILES EASTERLY OF THE READING-WEST WINDSOR TOWN LINE AND EXTENDING WESTERLY 5,587.5 FEET.

LENGTH OF PROJECT 5,587.5 FT. = 1.058 MILE



Date: 10/25/50
Pm 100R317
Route VTHH

NOTE: Any further information concerning final quantities, amounts or other details relative to this project may be found in either the field books or the estimate file.



APPROVED: OCT. 25, 1950
H. E. Sawyer
CHIEF ENGINEER
SUBMITTED BY ORDER OF THE STATE HIGHWAY BOARD

GROUND ELEVATION	BATHY LINE
GRADE ELEVATION	10' LINE

CURVE DATA

DEFLECTION ANGLE	Δ
DEGREE OF CURVE	D
RADIUS OF CURVE	R
TANGENT DISTANCE	T
LENGTH OF CURVE	L
EXTERNAL DISTANCE	E
POINT OF INTERSECTION	P. I.
POINT OF CURVE	P. C.
POINT OF TANGENT	P. T.
POINT ON TANGENT	P. O. T.

SCALES

TITLE	1" = 120'
PLAN	1" = 50'
PROFILE	1" = 10'
CROSS SECTIONS	1" = 5'

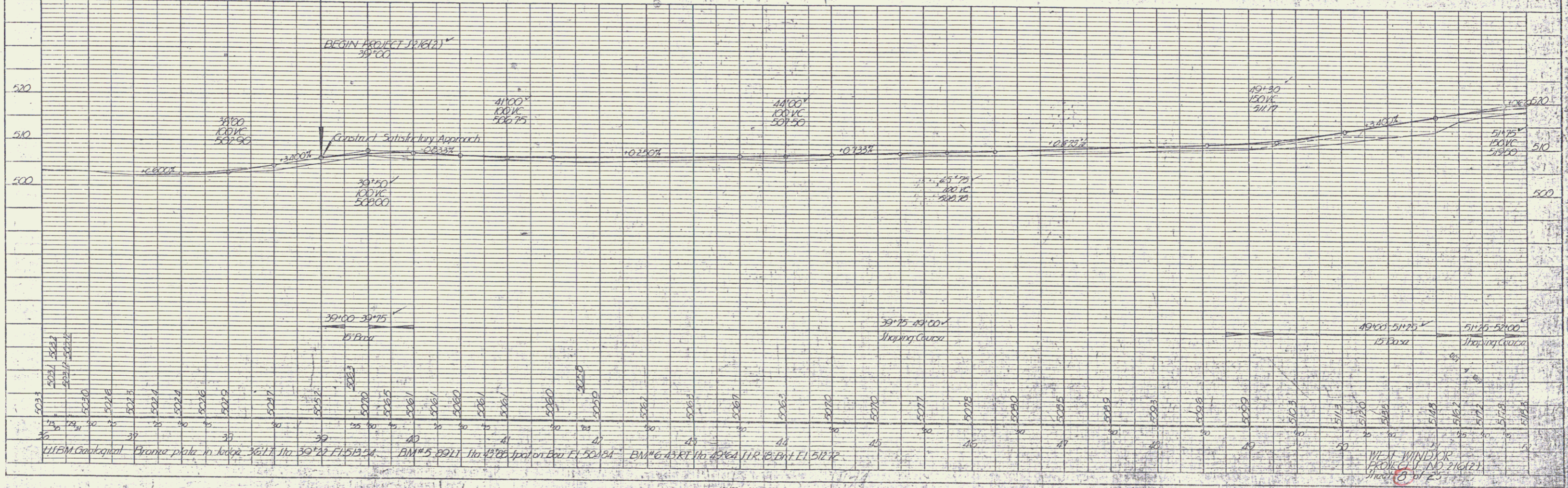
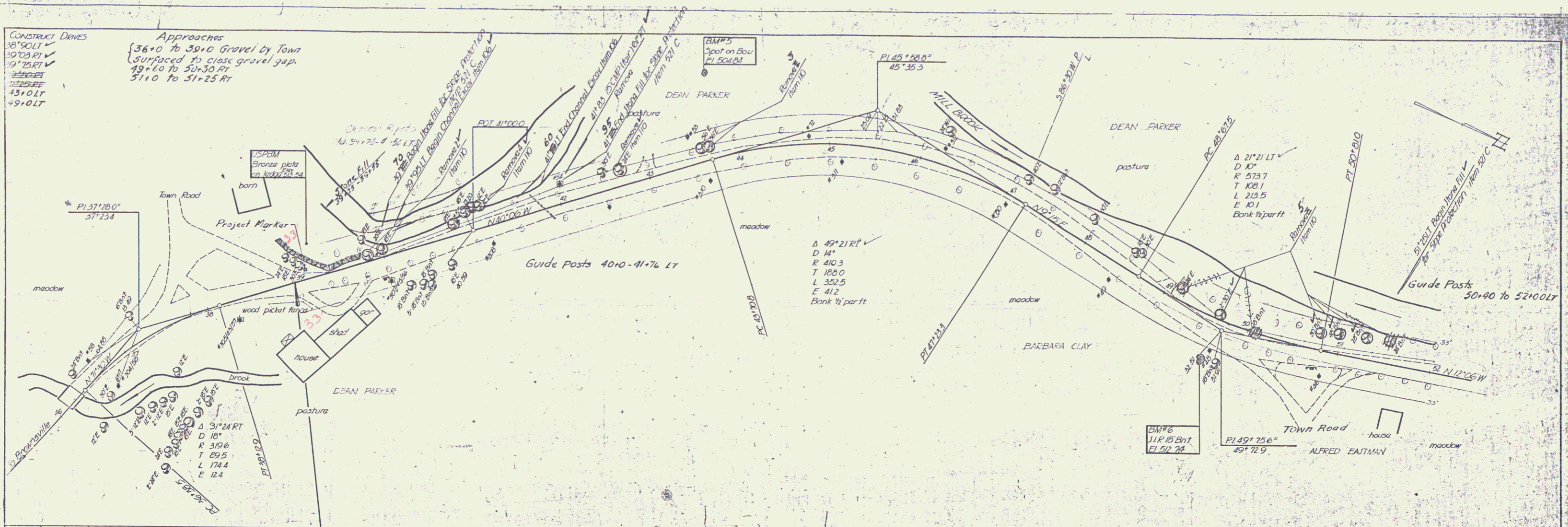
PROJECT NAME AND NUMBER	TYPE	PAVEMENT AREA
WEST WINDSOR S216(2)	DBL-TACK	13,000 s.y.
RECORD PLANS		
MATERIALS		
SAND, 1/4 Sand & Gravel Co. Rockingham Vt.	A.C.C.G.M.P. Bancroft & Martin	
STONE	Pelling Mills, So. Portland, Me.	
TAR, Barrett Co. Malden, Mass.	GRAVEL, Stoughton, At. Ainsden Vt.	
R.C.P. W. Conc. Pipe Corp. Windsor Vt.		
CONTRACTOR, Lea & Roland Laperle	CONTRACT DATED	Sept. 12, 1951
RES. ENGR., S.V. Clifford	STARTED	Oct. 15, 1951
RECORD PLANS by S.V. Clifford	COMPLETED	JUN 27, 1952
	ACCEPTED	JUN 22, 1952

THESE PLANS ARE SUBJECT TO SUCH REVISIONS AS MAY BE REQUIRED BY THE BUREAU OF PUBLIC ROADS OR THE COMMISSIONER OF HIGHWAYS. CONSTRUCTION IS TO BE CARRIED ON IN ACCORDANCE WITH THE PLANS AND THE STANDARD ROAD AND BRIDGE SPECIFICATIONS OF 1948 AS APPROVED JULY 29, 1948 BY THE BUREAU OF PUBLIC ROADS AND INCLUDING ALL SUBSEQUENT APPROVED REVISIONS AND SUCH REVISED SPECIFICATIONS AND SPECIAL PROVISIONS AS ARE SUBMITTED WITH THE PLANS.

DEPARTMENT OF HIGHWAYS	BUREAU OF PUBLIC ROADS
RECORD ENGINEER FOR APPROVAL	
APPROVED	
DIVISION	SECRETARY
PROJECT	S 216(2)
SHEET	100R317
DATE	OCT 25 1950

CONSTRUCT DRAWS
 38+90 LT ✓
 39+03 RT ✓
 39+75 RT ✓
 40+75 RT ✓
 41+00 RT ✓
 43+0 LT ✓
 49+0 LT ✓

Approaches
 36+0 to 39+0 Gravel by Town
 Surfaced to class gravel gap.
 49+60 to 50+30 RT
 51+0 to 51+25 RT



DATE: 1/20/20
 DRAWN BY: [Signature]
 CHECKED BY: [Signature]
 IN CHARGE: [Signature]

DATE: 1/20/20
 DRAWN BY: [Signature]
 CHECKED BY: [Signature]
 IN CHARGE: [Signature]

WBM Geological Bronze plate in Judge 36 LT Sta 39+22 PI 519.54. B.M. 5 2011 Sta 43+22 Top on Eau PI 504.84. B.M. 6 43 RT Sta 42+64 I.R. 18 B.M. 11 512.72. W.M. WINDSOR PROJECT NO. 216(2) sheet 10 of 25

FLAIR
 DRAWN BY: A. HULL
 CHECKED BY: HULL
 DATE: 12/1/73

PROFILE
 DRAWN BY: A. HULL
 CHECKED BY: HULL
 DATE: 12/1/73

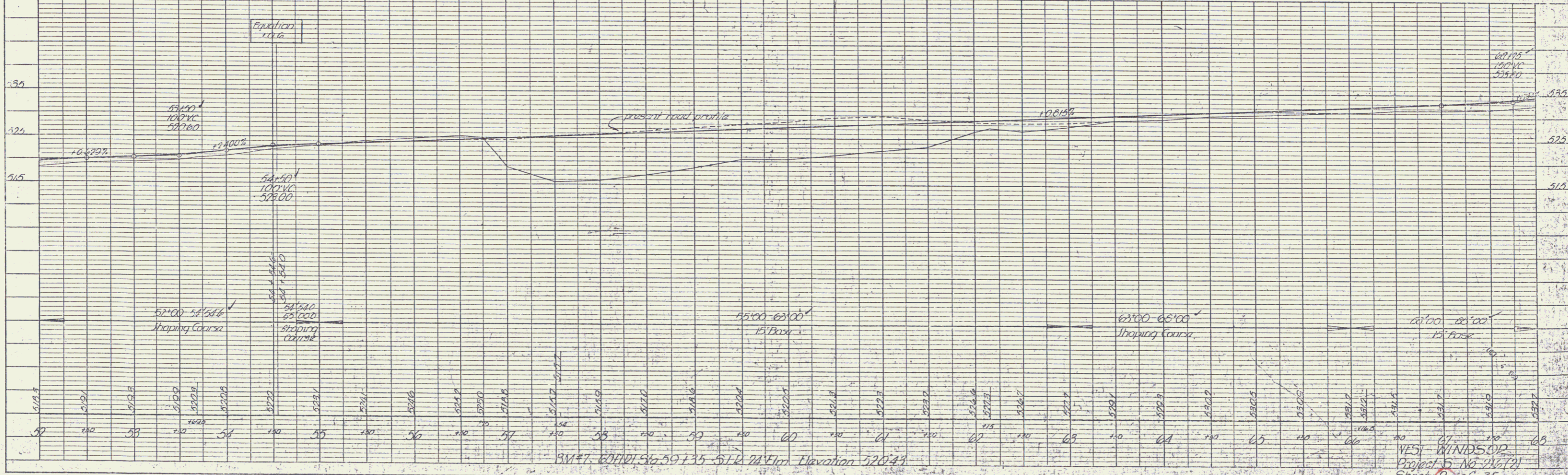
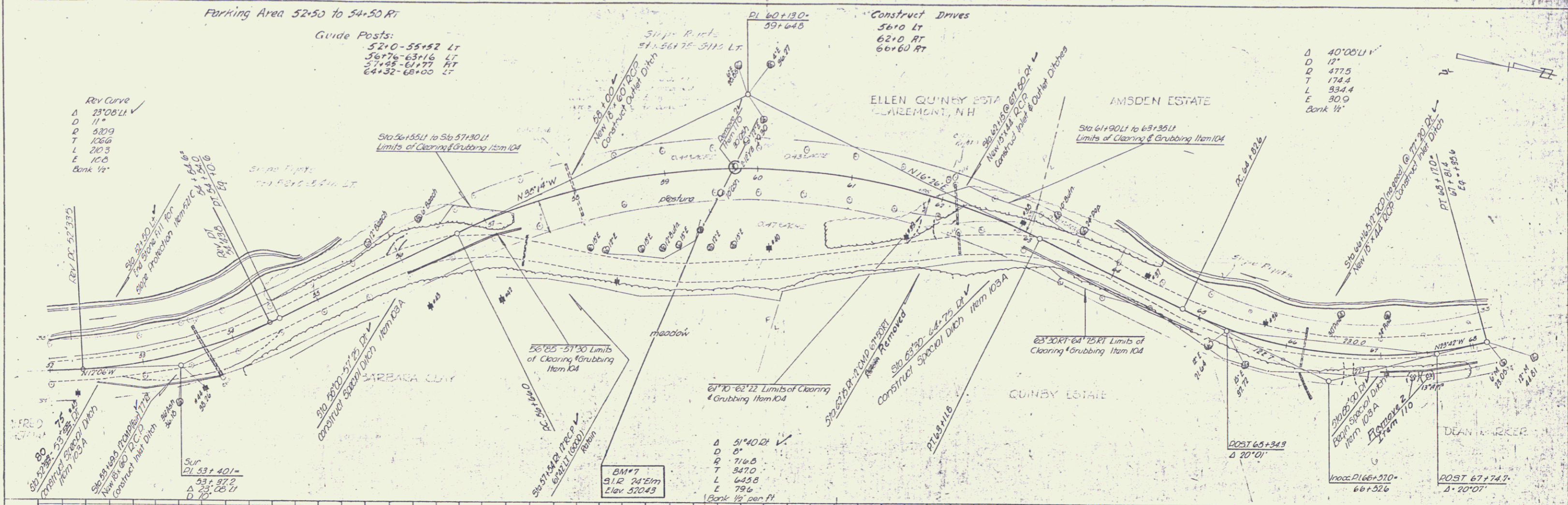


PLATE 1 - PLAN - PROFILE & P&E STANDARD
 HULL & BULL CO. NEW YORK
 P. E. & C. INC. BOSTON

WEST WINDSOR
 Project 5 NG 2007
 Sheet 9 of 25

PLAN
 DATE: 10/15/2010
 DRAWN BY: [Signature]
 CHECKED BY: [Signature]
 NO. 10122/2010

NOTE BOOK SHEET CHECKED
 NO. 10122/2010
 STRUCTURE NOT IN CHARGE

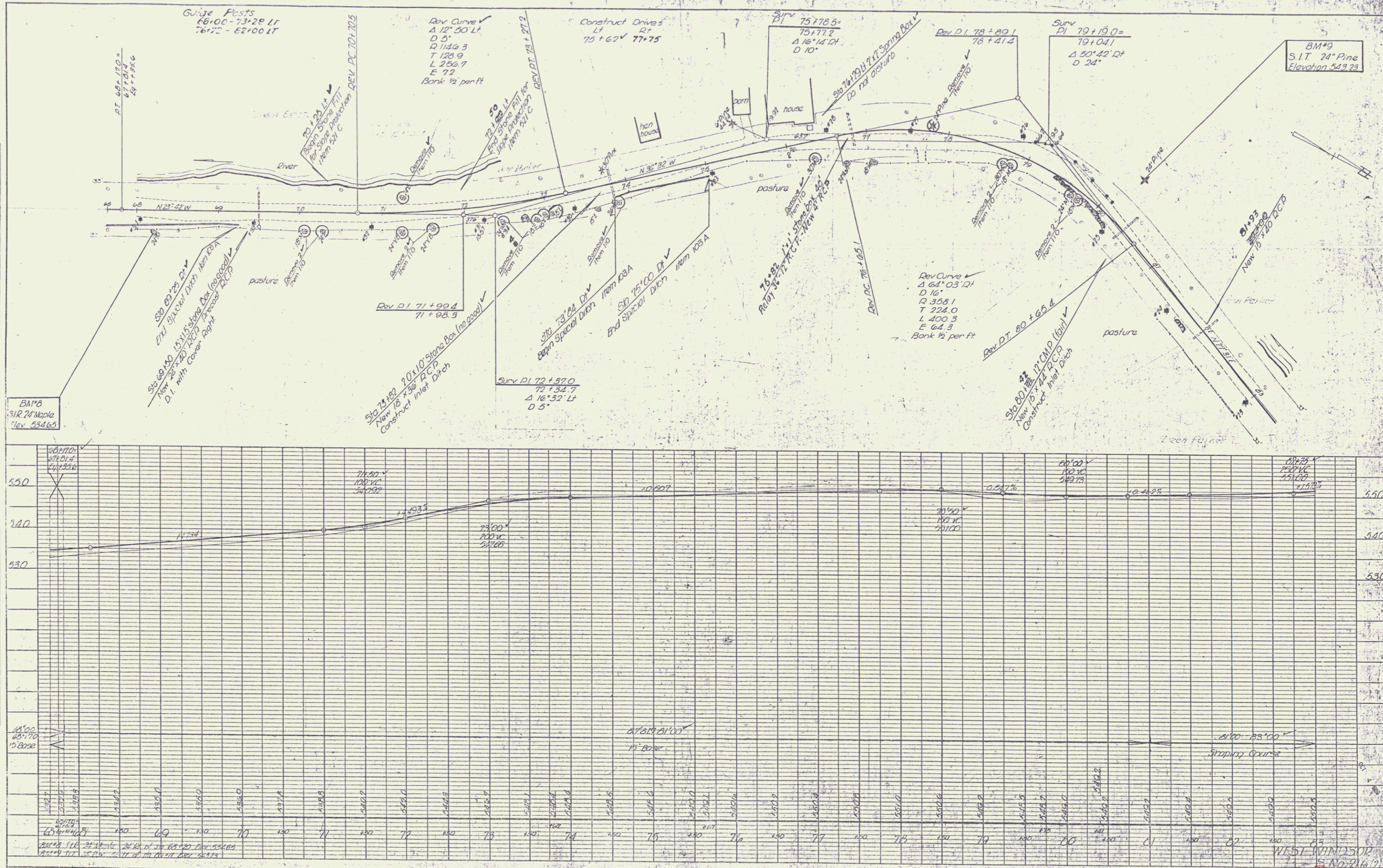
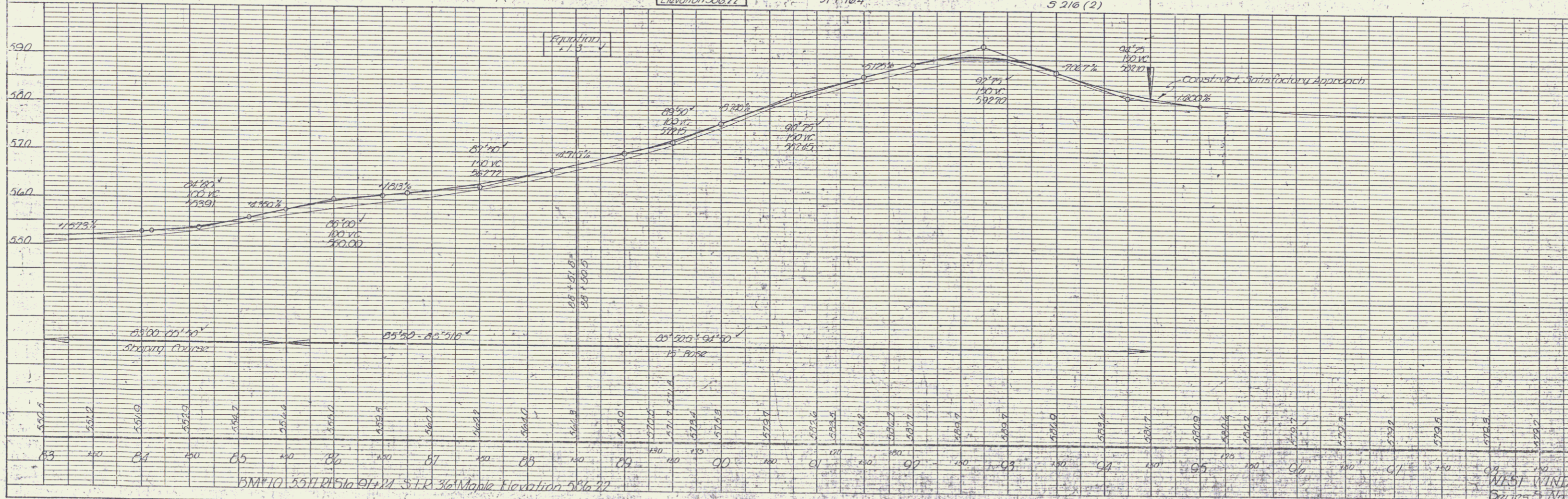
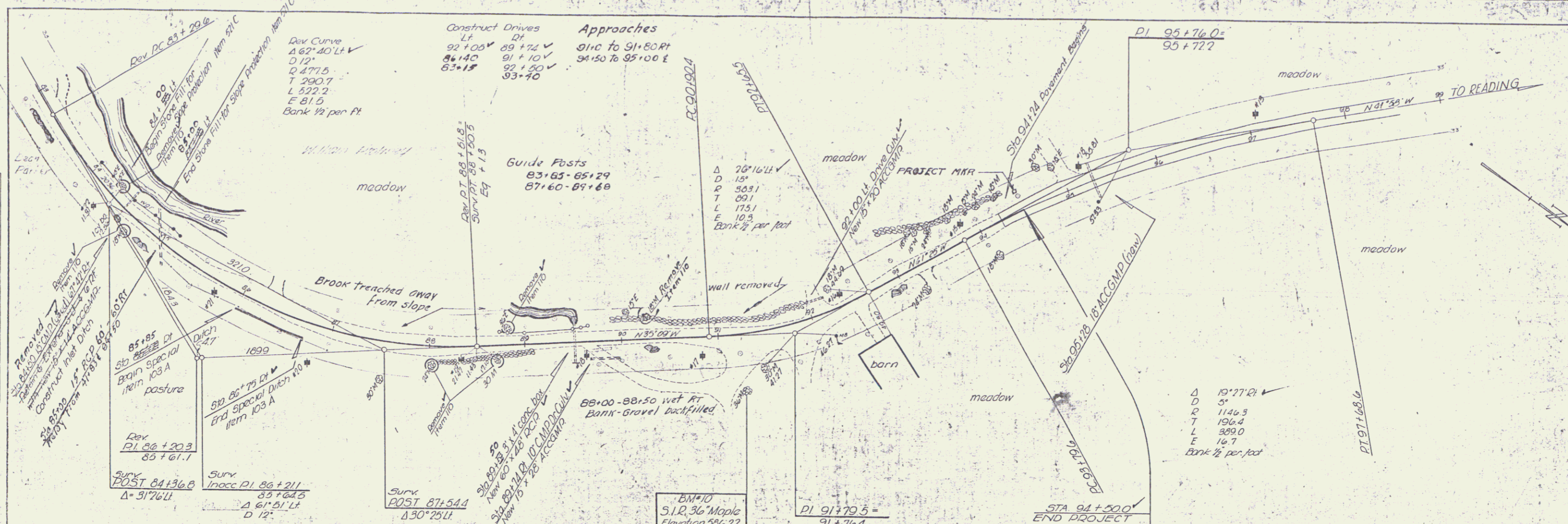


PLATE 1 - PLAN PROFILE OF RIVER CHANNEL
 ENGINEER & ARCHITECTS, NEW YORK
 P. & C. No. 2010

WEST WINDSOR
 No. 216
 Sheet 10 of 25

PLAN
 DATE: 11/11/11
 DRAWN BY: J. J. [unclear]
 CHECKED BY: [unclear]
 IN CHARGE: [unclear]

PROFILE
 DATE: 11/11/11
 DRAWN BY: J. J. [unclear]
 CHECKED BY: [unclear]
 IN CHARGE: [unclear]



WEST WINDSOR
 BURNS, NJ 07001
 SHEET NO. 25