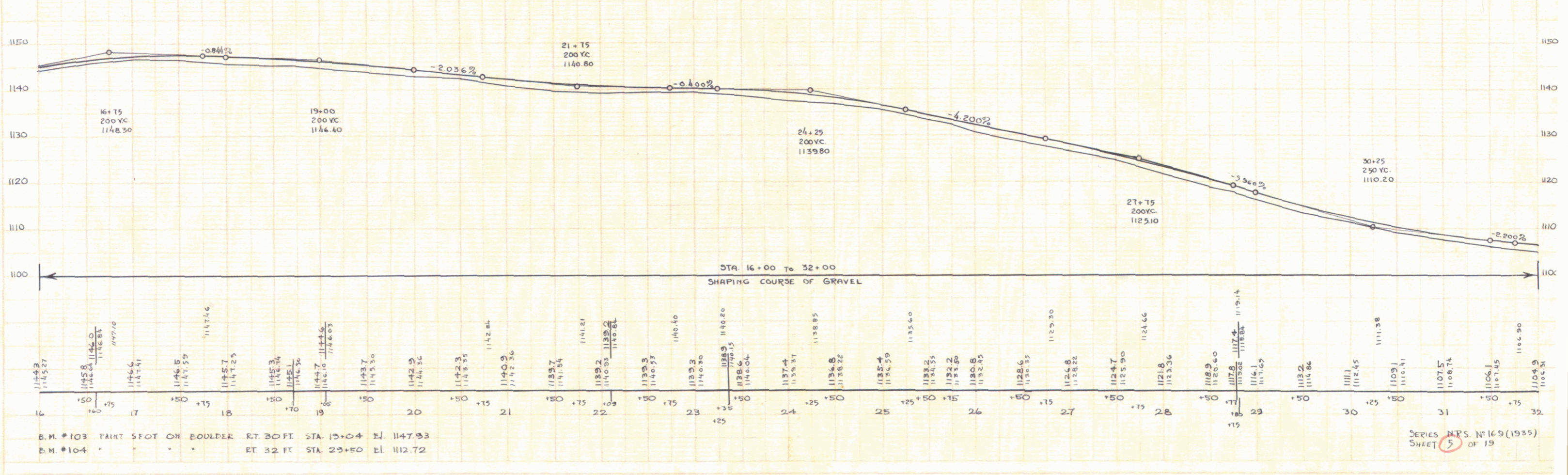
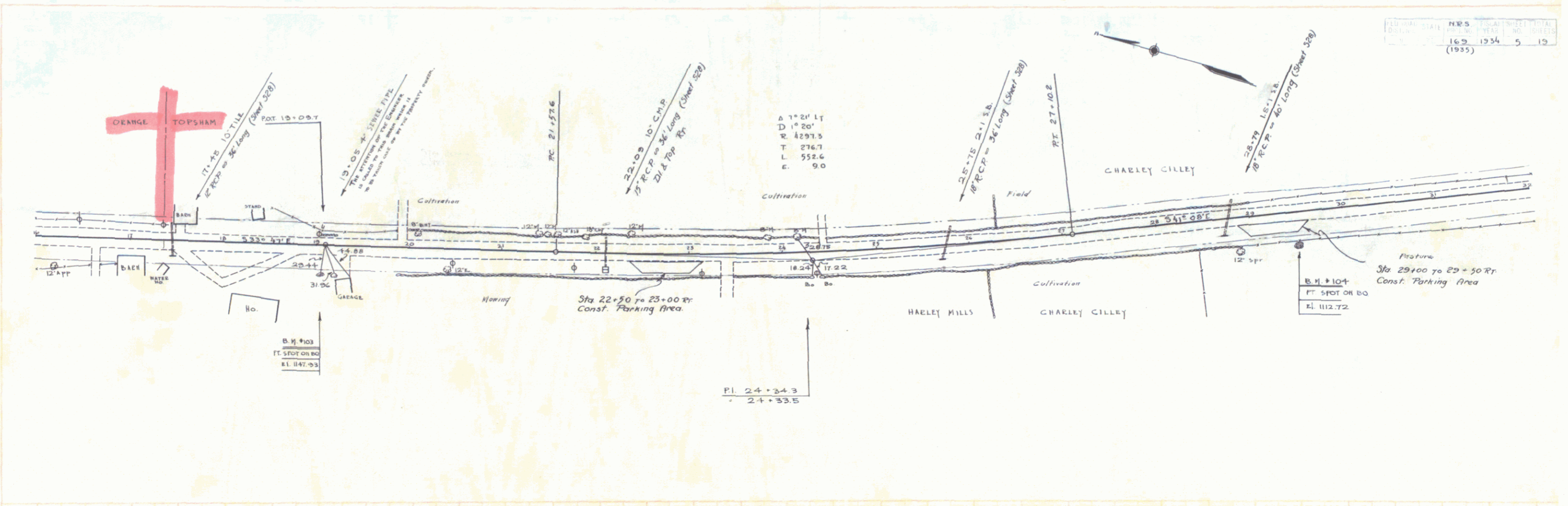


ORANGE

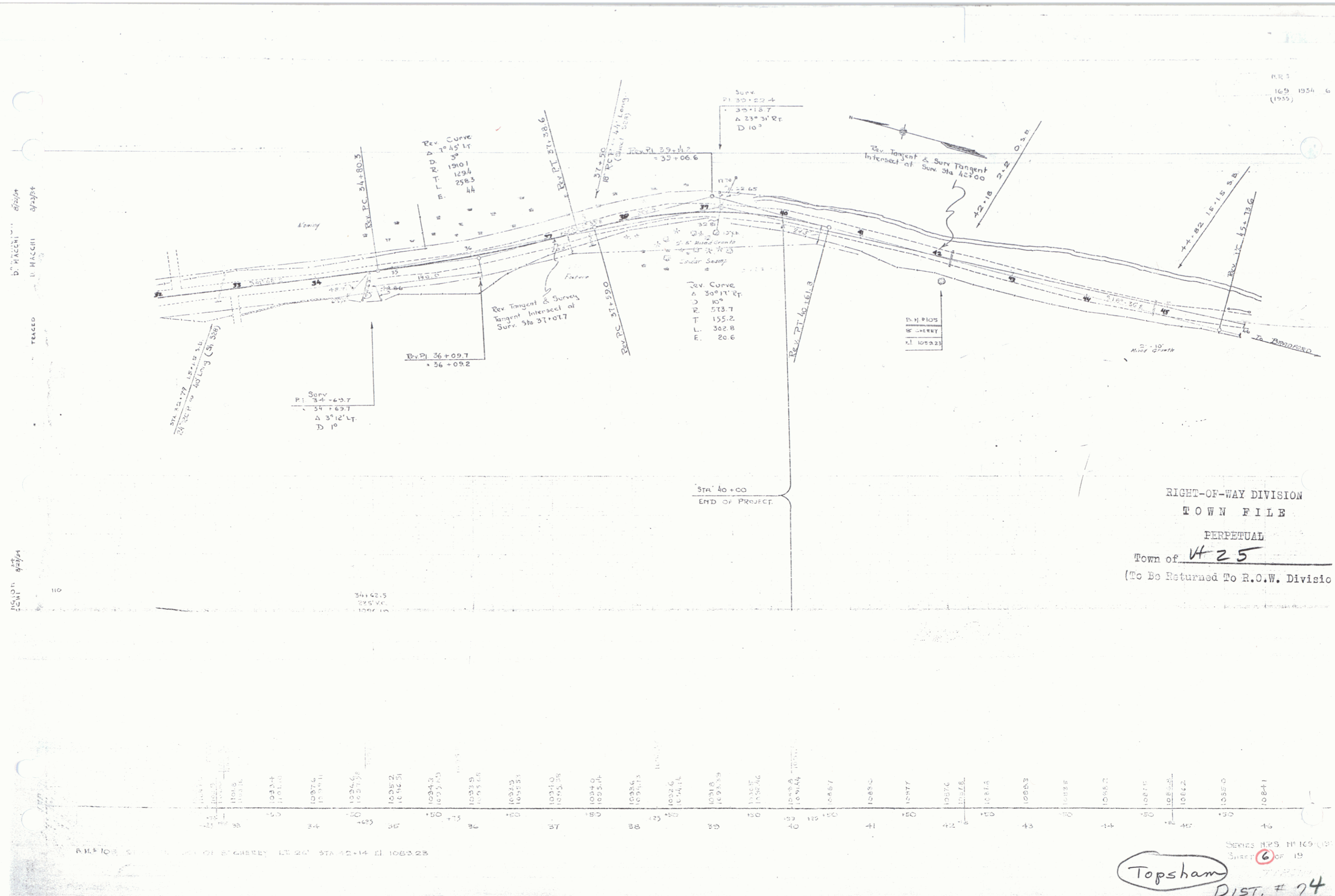
DRAWN BY: FARRINGTON D. MACCHI 8/29/34
 CHECKED BY: D. MACCHI 8/29/34
 TRACED BY: FARRINGTON D. MACCHI 8/29/34

STATE	N.H.	TOWN	ORANGE	SHEET	5	TOTAL SHEETS	19
DATE	1934	YEAR	1934	NO.	5		
1935							



SERIES N.H.S. #169 (1935)
SHEET 5 OF 19

RR 1
169 1954 6
(1955)



RIGHT-OF-WAY DIVISION
TOWN FILE
PERPETUAL
Town of 425
(To Be Returned To R.O.W. Divisio

PLAN OF STATIONING FOR ROAD AT STA 42+14 E 108323

Series MRS 11109 (19)
Sheet 6 of 19
Topsham
DIST. # 74