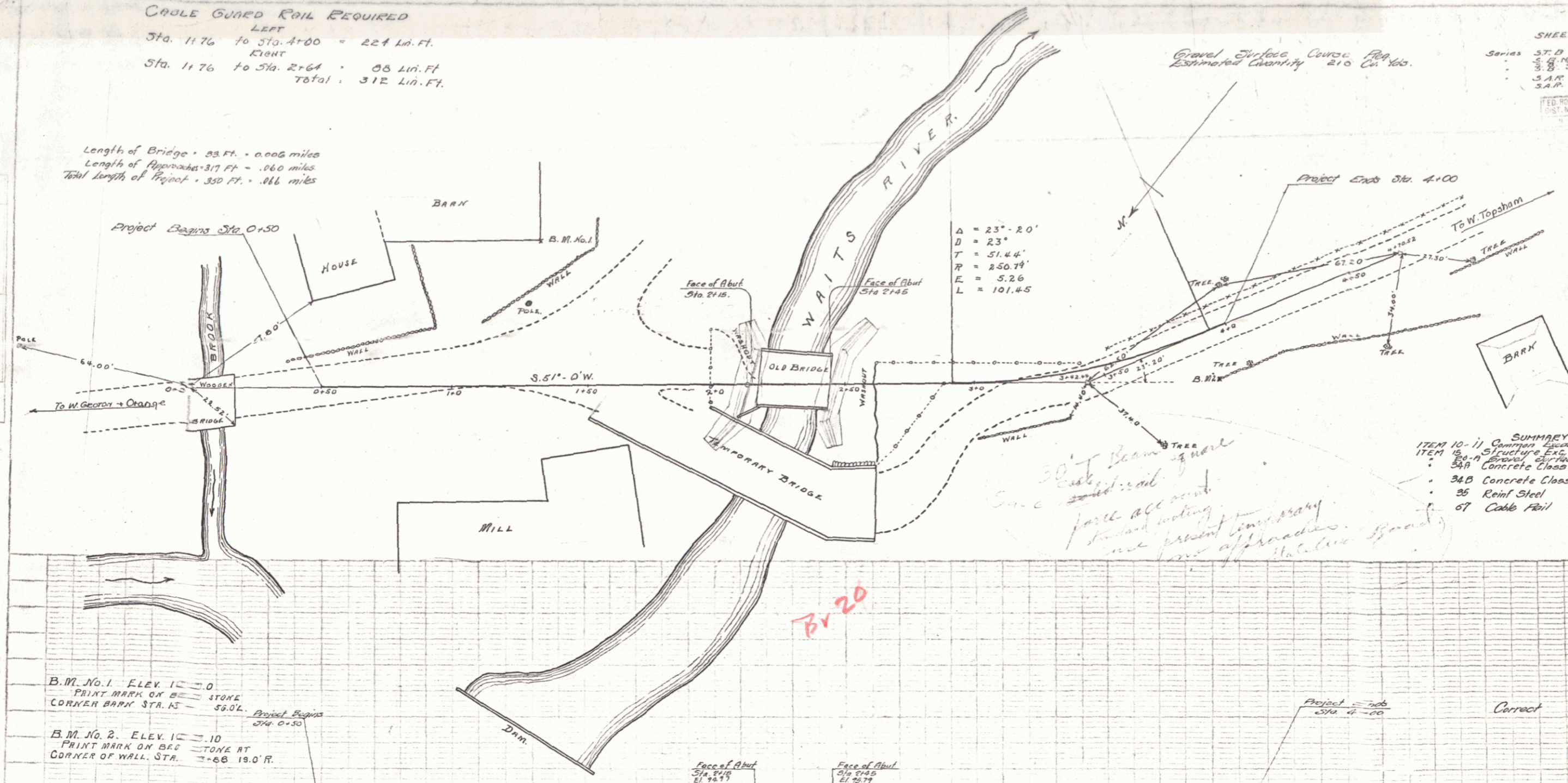


CABLE GUARD RAIL REQUIRED
 LEFT
 Sta. 1+76 to Sta. 4+00 = 224 Lin. Ft.
 RIGHT
 Sta. 1+76 to Sta. 2+64 = 88 Lin. Ft.
 Total: 312 Lin. Ft.

Length of Bridge = 33 Ft. = 0.006 miles
 Length of Approaches = 317 Ft. = 0.60 miles
 Total length of Project = 350 Ft. = 0.66 miles

Gravel Surface Course Flag
 Estimated Quantity 210 Cu. Yds.

SHEETS TO BE USED
 Series 37-B 20 No. 30' span 15' skew with gravel
 37-B 19 No. 30' span 15' skew with gravel
 37-B 18 No. 30' span 15' skew with gravel
 37-B 17 No. 30' span 15' skew with gravel
 37-B 16 No. 30' span 15' skew with gravel
 37-B 15 No. 30' span 15' skew with gravel
 37-B 14 No. 30' span 15' skew with gravel
 37-B 13 No. 30' span 15' skew with gravel
 37-B 12 No. 30' span 15' skew with gravel
 37-B 11 No. 30' span 15' skew with gravel
 37-B 10 No. 30' span 15' skew with gravel
 37-B 9 No. 30' span 15' skew with gravel
 37-B 8 No. 30' span 15' skew with gravel
 37-B 7 No. 30' span 15' skew with gravel
 37-B 6 No. 30' span 15' skew with gravel
 37-B 5 No. 30' span 15' skew with gravel
 37-B 4 No. 30' span 15' skew with gravel
 37-B 3 No. 30' span 15' skew with gravel
 37-B 2 No. 30' span 15' skew with gravel
 37-B 1 No. 30' span 15' skew with gravel



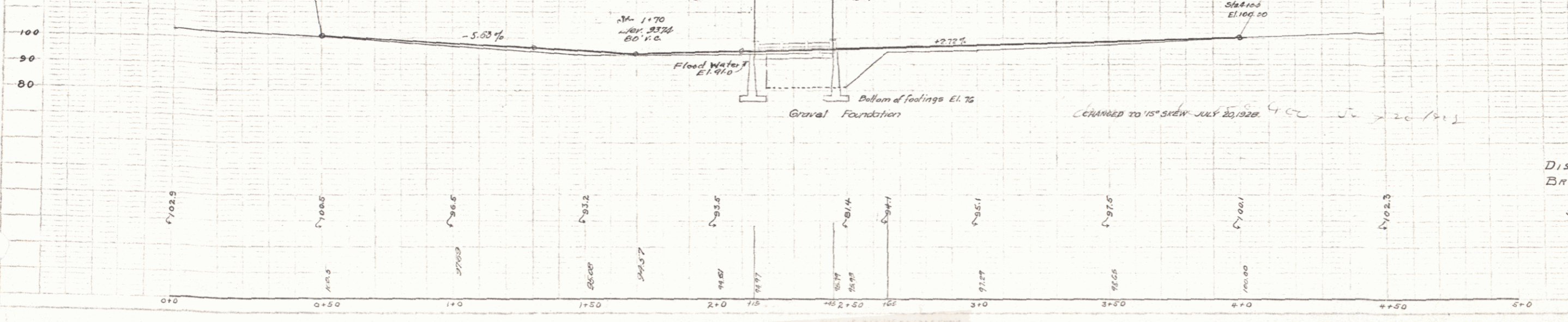
$\Delta = 23^\circ - 20'$
 $D = 23'$
 $T = 51.44'$
 $R = 250.74'$
 $E = 5.26'$
 $L = 101.45'$

SUMMARY OF QUANTITIES

ITEM 10-11	Concrete abutments and foundations	710
ITEM 12	Structure Exp.	330
ITEM 13	Gravel surface course	210
ITEM 14	Concrete Class A	39
ITEM 15	Concrete Class B	196
ITEM 16	Rein. Steel	2,110
ITEM 17	Cable Rail	312

B.M. No. 1. ELEV. 10.00
 PRINT MARK ON B.C. STONE
 CORNER BARN STA. 1+76

B.M. No. 2. ELEV. 10.10
 PRINT MARK ON B.C. STONE AT
 CORNER OF WALL STA. 1+66 19.0'R.



Correct
 G. D. Bishop
 Bridge Engineer

DISTRICT NO. 7
 BRIDGE NO. 21
 TOP-SHAFT
 Scale 1" = 20'
 Vertical 1" = 20'

SHEET 3 OF 10 SHEETS