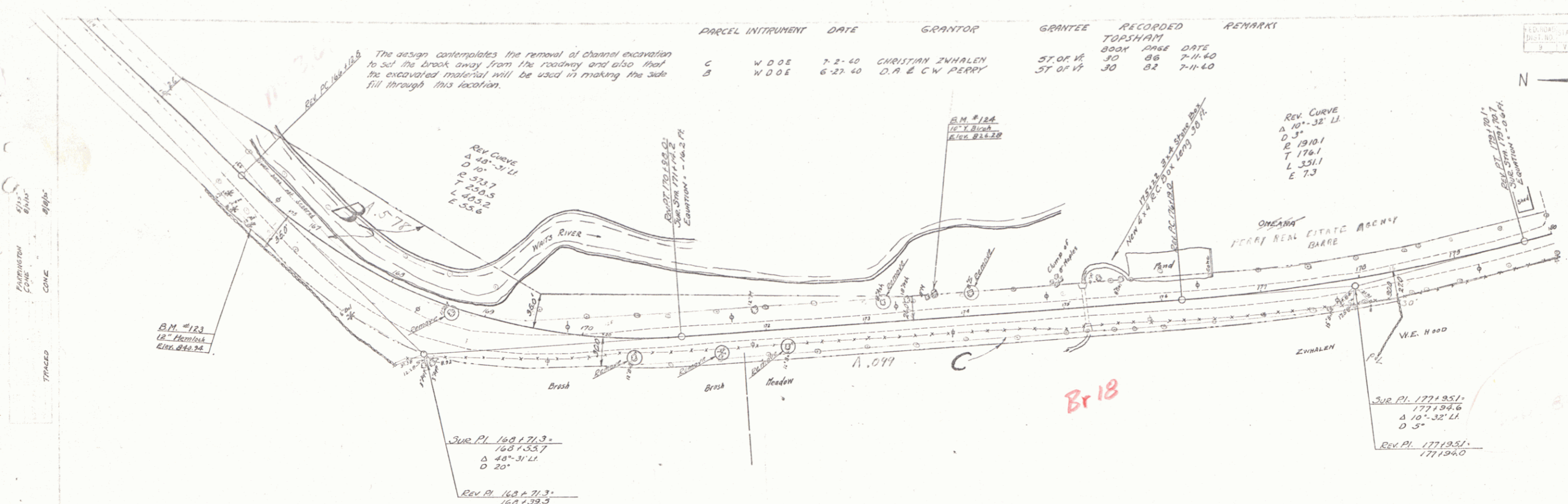


PARCEL	INSTRUMENT	DATE	GRANTOR	GRANTEE	RECORDED	REMARKS
C	W.D.O.E.	7-2-40	CHRISTIAN ZWHALEN	ST. OF VT.	30 86	7-11-40
B	W.D.O.E.	6-27-40	D.A. & C.W. PERRY	ST. OF VT.	30 82	7-11-40

REVISION	DATE	BY	REASON
1	7-11-40		
2	7-11-40		
3	7-11-40		

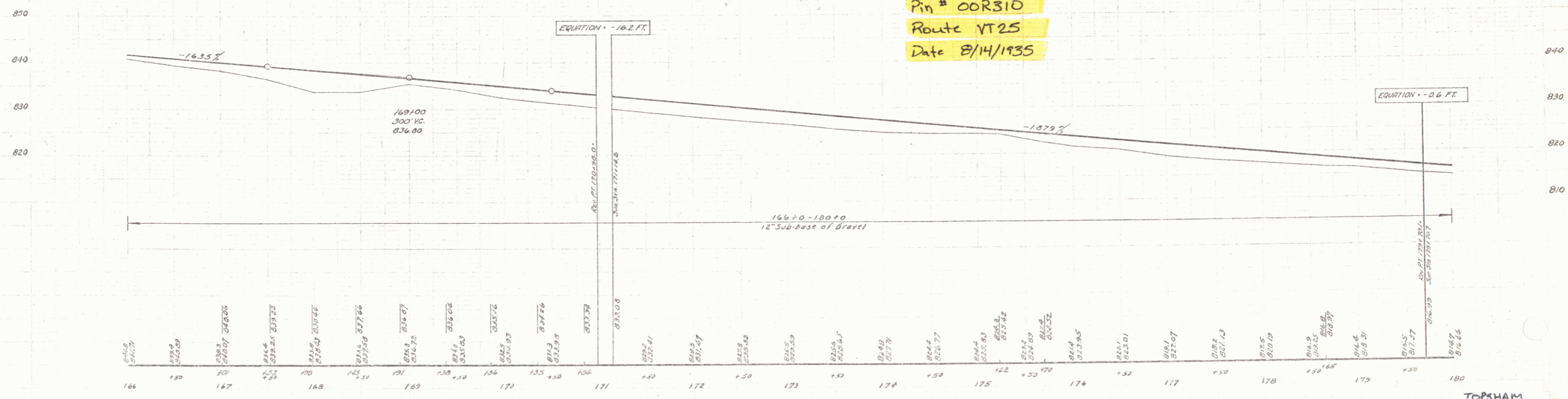
The design contemplates the removal of channel excavation to set the break away from the roadway and also that the excavated material will be used in making the side fill through this location.



TOWN OF TOPSHAM

Project ST 169L
 Pin # 00R310
 Route VT25
 Date 8/14/1935

MP 3.671-2.755



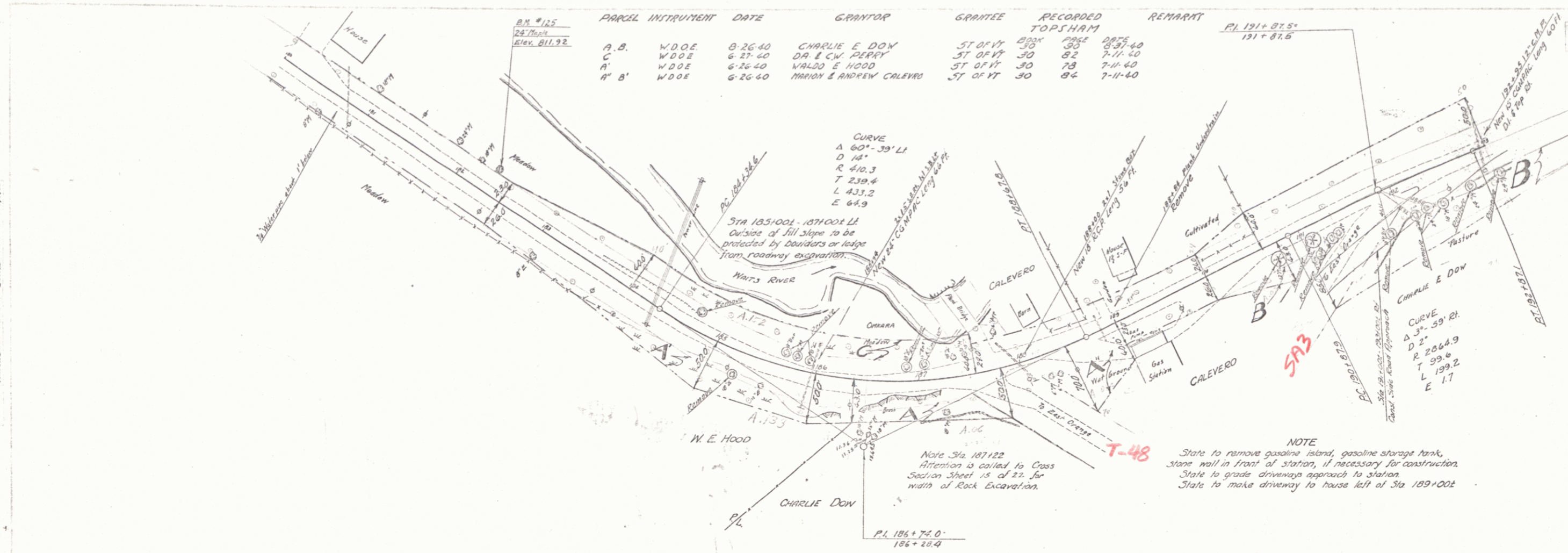
B.M. # 123 SPIKE IN ROOT OF 12\"/>

TOPSHAM
 SERIES STATE NO 169L
 SHEET 3 OF 3

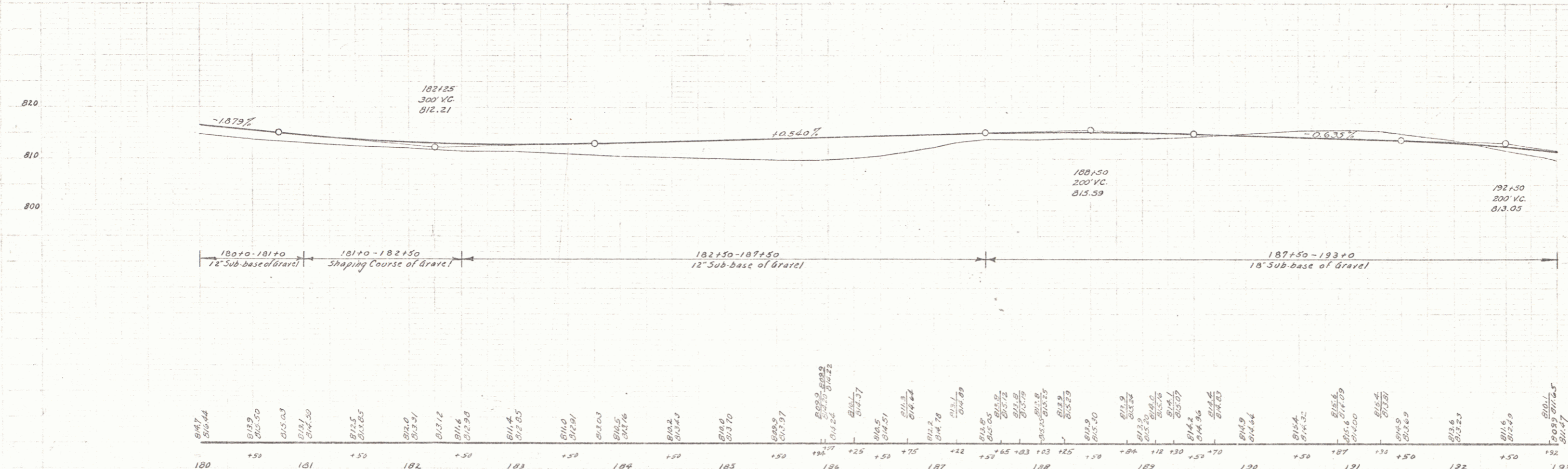
DIST. # 9 PLANS

PARCEL	INSTRUMENT	DATE	GRANTOR	GRANTEE	RECORDED	REMARKS
A. B.	W.D.O.E.	8-26-40	CHARLIE E. DOW	ST. OF VT.	82	8-27-40
C	W.D.O.E.	6-27-40	DA. & C.W. PERRY	ST. OF VT.	70	7-11-40
A'	W.D.O.E.	6-26-40	WALDO E. HOOD	ST. OF VT.	78	7-11-40
A' B'	W.D.O.E.	6-26-40	MARION & ANDREW CALEVERO	ST. OF VT.	84	7-11-40

STATE	YEAR	TOTAL SHEETS	TOTAL
VT.	1972	4	



NOTE
 State to remove gasoline island, gasoline storage tank, stone wall in front of station, if necessary for construction. State to grade driveway approach to station. State to make driveway to house left of Sta. 189+00.

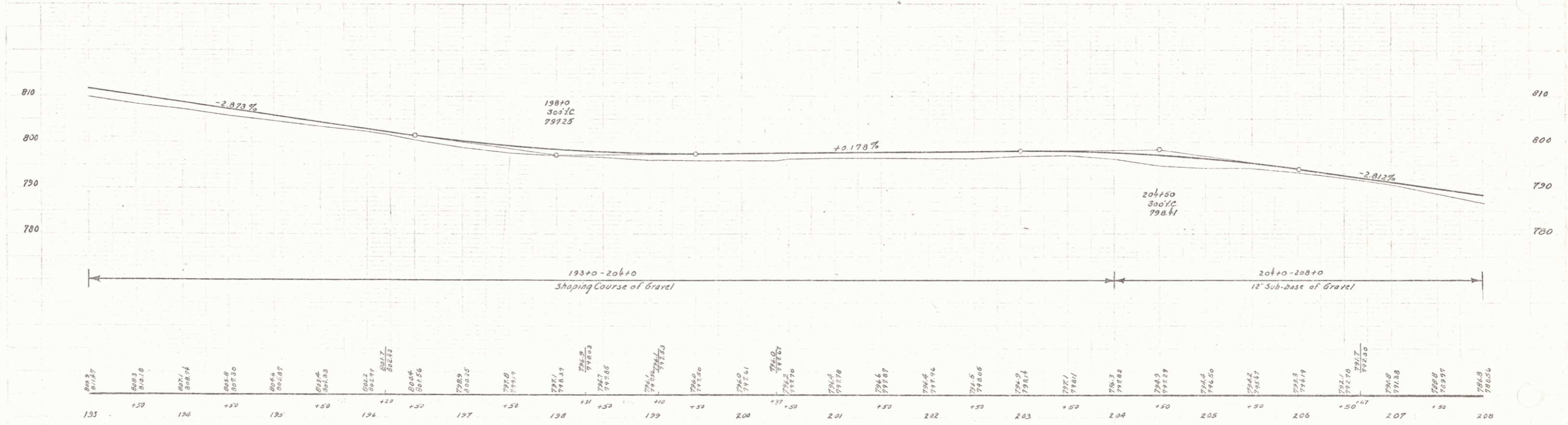
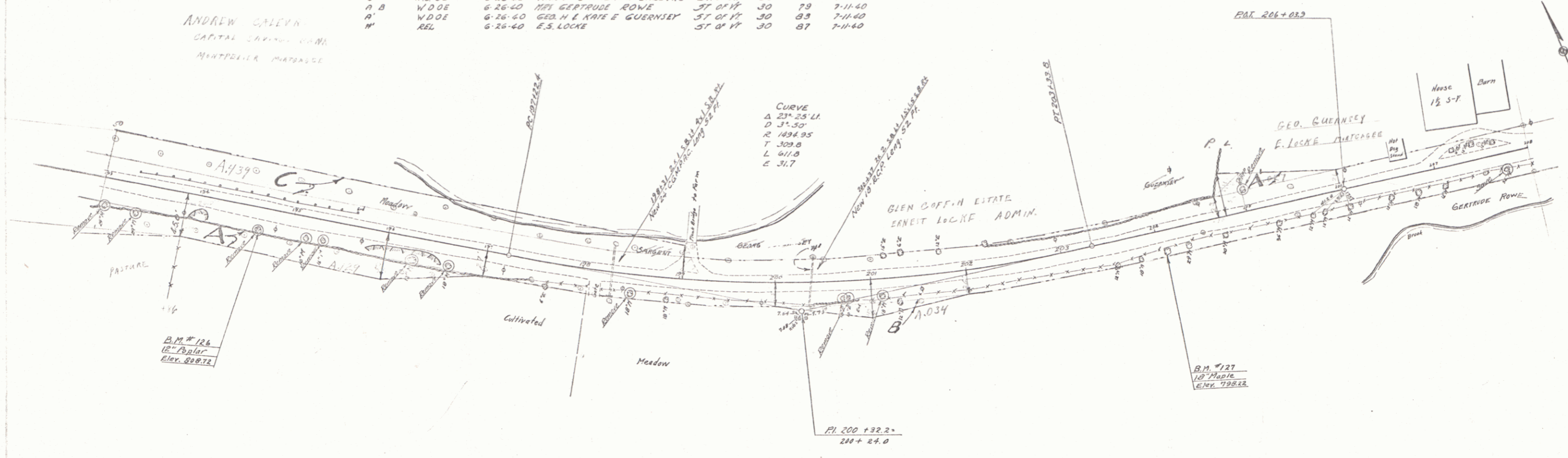


B.M. #125 SPIKE IN ROOT OF 24" MAPLE 23 FEET OF STA. 182+32 ELEV. 811.92

TOPSHAM
 SERIES STATE NO. 169 L
 SHEET 4 OF 4

PARCEL	INSTRUMENT	DATE	GRANTOR	GRANTEE	RECORDED	REMARKS
					TOPSHAM	
C	V.D.O.E.	6-26-60	MARION & ANDREW CALEVO	ST. OF VT.	BOOK 84	7-11-60
A.B.	V.D.O.E.	6-26-60	MRS. GERTRUDE ROWE	ST. OF VT.	30 79	7-11-60
A	V.D.O.E.	6-26-60	GEO. H. & KATE E. GUERNSEY	ST. OF VT.	30 83	7-11-60
W	REL.	6-26-60	E.S. LOCKE	ST. OF VT.	30 87	7-11-60

ANDREW CALEVO
CAPITAL SAVINGS BANK
MONTPELIER, VERMONT

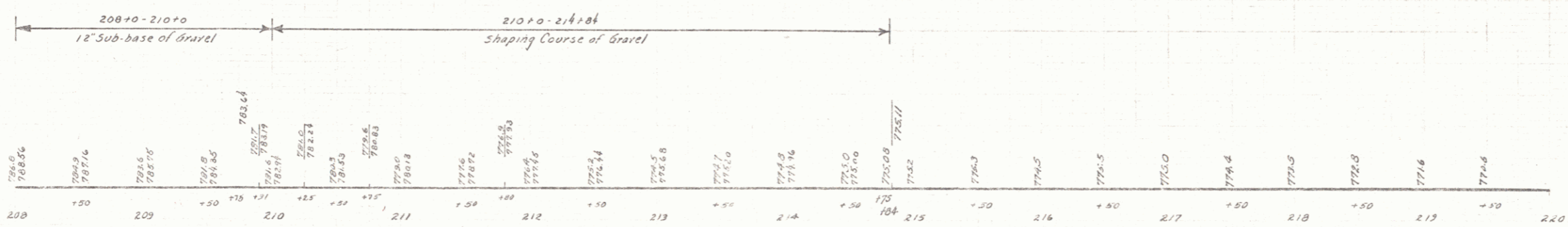
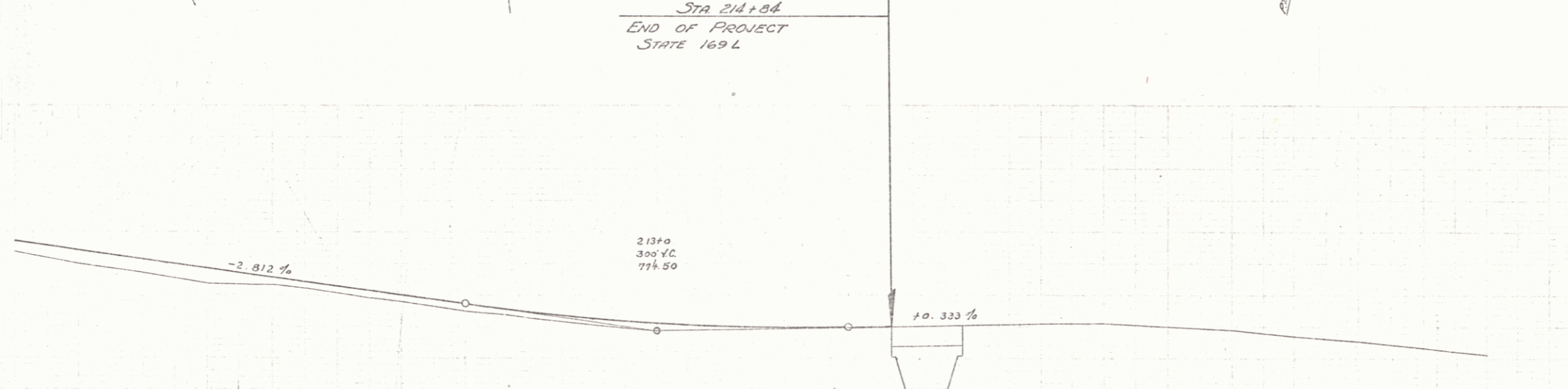
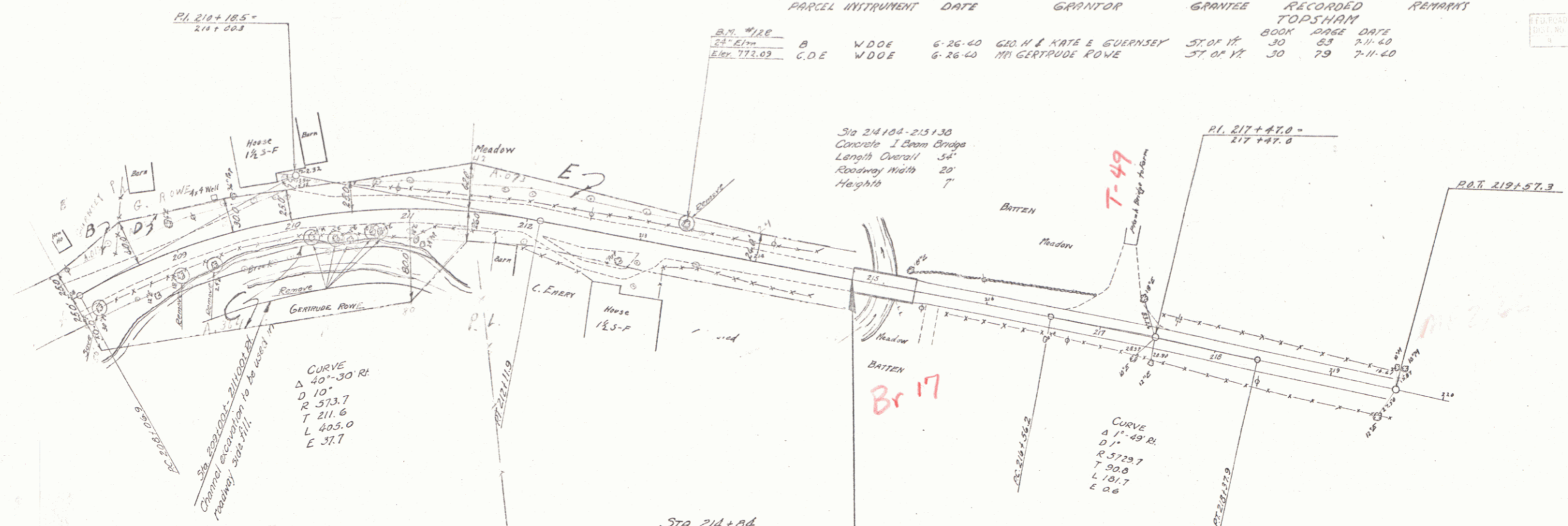


B.M. #126 SPIKE IN ROOT OF 12\"/>

TOPSHAM
SERIES STATE NO. 169 L
SHEET 5 OF

PARCEL INSTRUMENT	DATE	GRANTOR	GRANTEE	RECORDED	REMARKS
B.M. #128				TOPSHAM	
22-21-40	6-26-40	ED. H. & NATE E. GUERNSEY	ST. OF VT.	BOOK 30 PAGE 53	DATE 7-11-40
22-21-40	6-26-40	Mrs. GERTRUDE POVE	ST. OF VT.	BOOK 30 PAGE 79	DATE 7-11-40

DATE	BY	TOTAL SHEETS	TOTAL SHEETS
7-11-40		6	6



B.M. #128 SPIKE IN ROOT OF 24" ELM 17 FT. LT. OF STA. 212+35 ELEV. 778.03

TOPSHAM
SERIES STATE NO. 169L
SHEET 6 OF 6