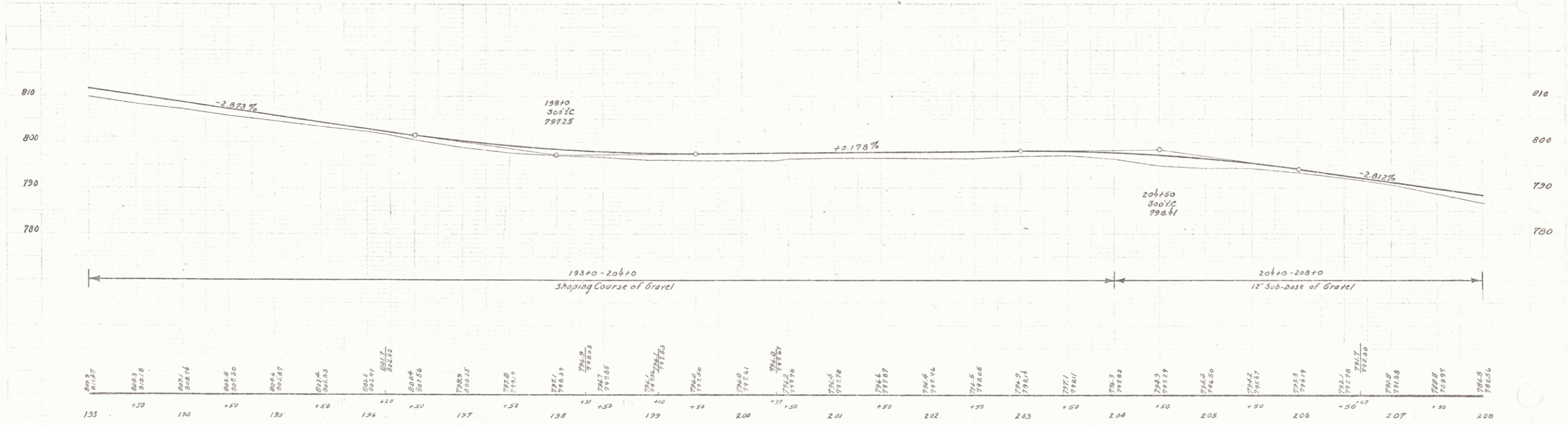
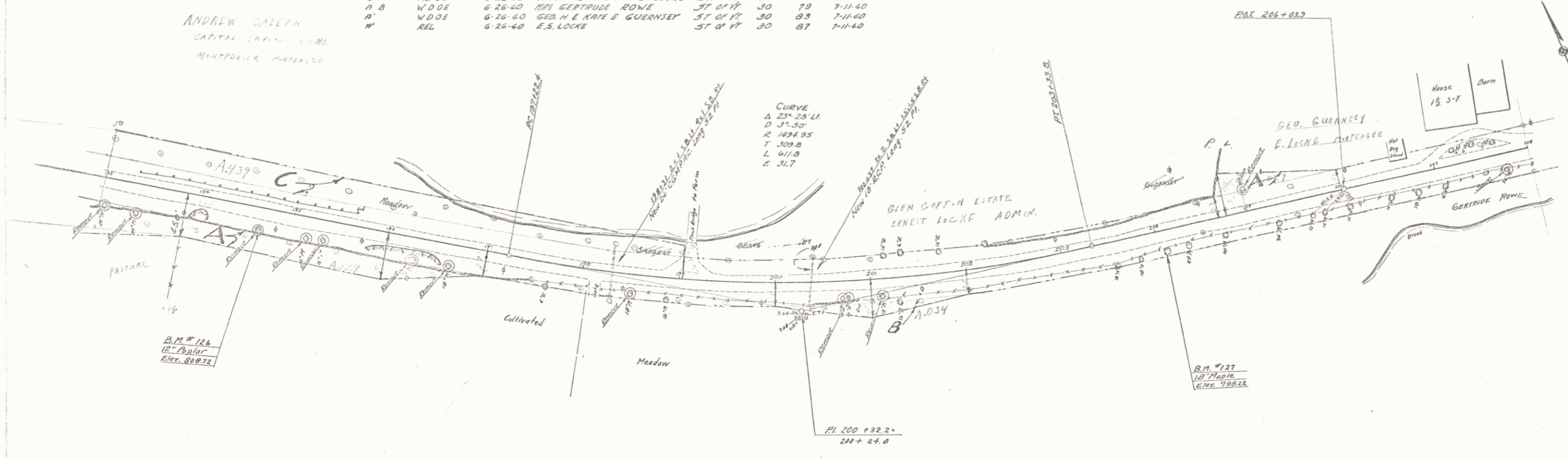


PARCEL	INSTRUMENT	DATE	GRANTOR	GRANTEE	RECORDED	REMARKS
C	V.D.O.E.	6-26-60	MARION & ANDREW CALEVO	ST. OF VT.	BOOK 84	7-11-60
A.B.	V.D.O.E.	6-26-60	MRS. GERTRUDE ROWE	ST. OF VT.	30 79	7-11-60
A.	V.D.O.E.	6-26-60	GEO. H. & KATE E. GUERNSEY	ST. OF VT.	30 83	7-11-60
W	REL.	6-26-60	E.S. LOCKE	ST. OF VT.	30 87	7-11-60

ANDREW CALEVO
CAPITAL SAVINGS BANK
MONTPELIER, VERMONT



B.M. #126 SPIKE IN ROOT OF 12\"/>

TOPSHAM
SERIES STATE NO. 169 L
SHEET 5 OF