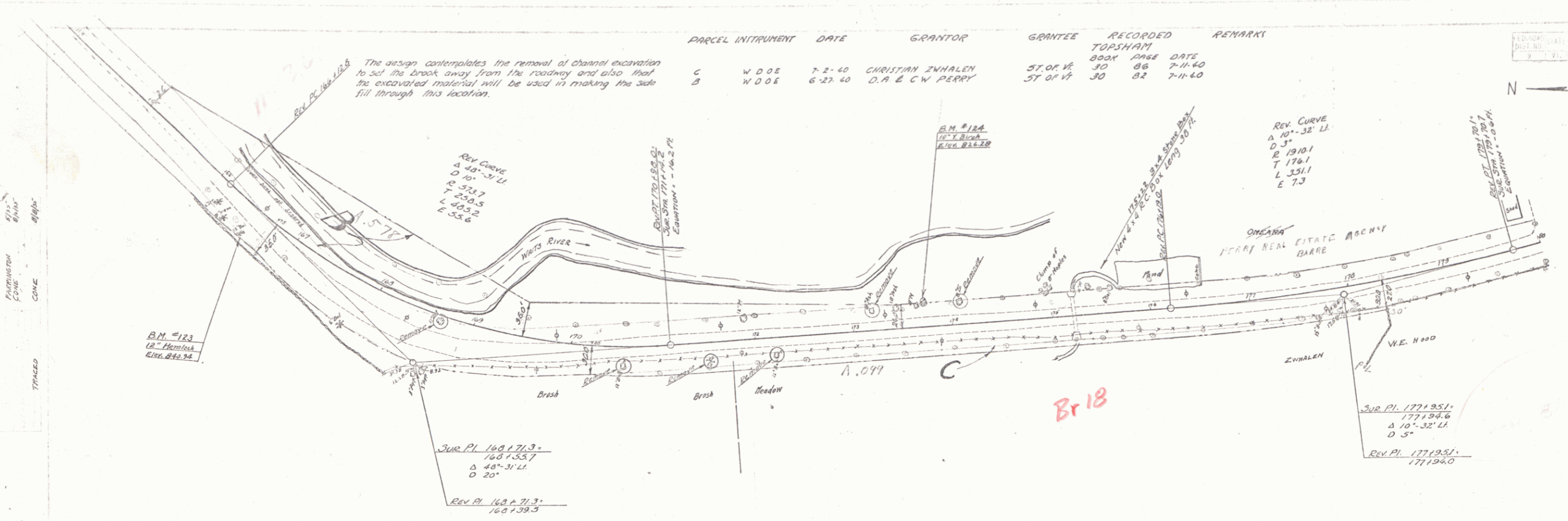


PARCEL	INSTRUMENT	DATE	GRANTOR	GRANTEE	RECORDED	REMARKS
C	W.D.O.E.	7-2-40	CHRISTIAN ZWHALEN	ST. OF VT.	30 86	7-11-40
B	W.D.O.E.	6-27-40	D.A. & C.W. PERRY	ST. OF VT.	30 82	7-11-40

REVISION	DATE	BY	REASON
1	7-11-40		
2	7-11-40		
3	7-11-40		

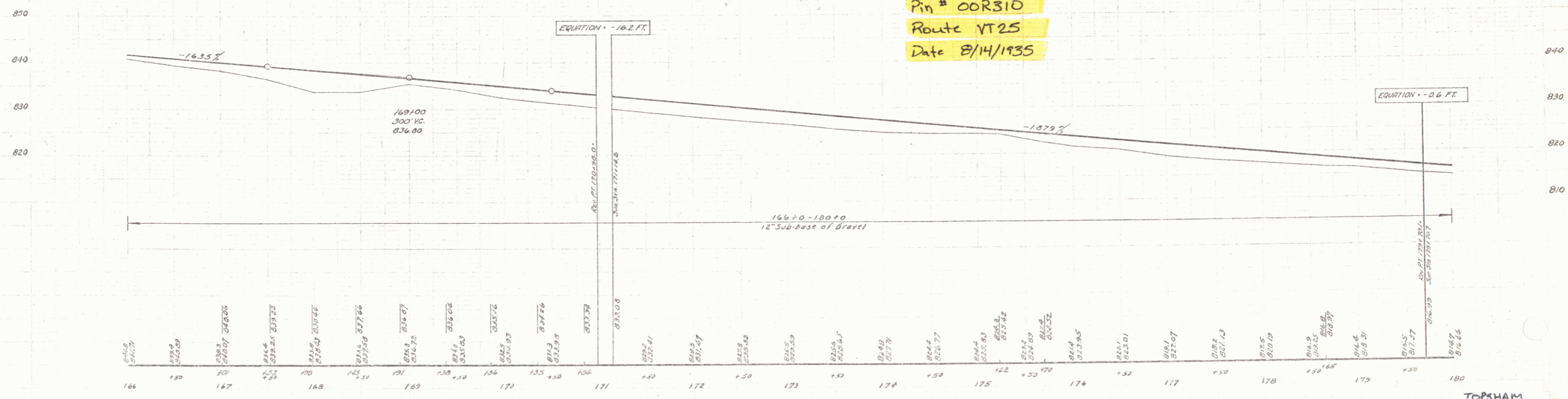
The design contemplates the removal of channel excavation to set the break away from the roadway and also that the excavated material will be used in making the side fill through this location.



TOWN OF TOPSHAM

Project ST 169L
 Pin # 00R310
 Route VT25
 Date 8/14/1935

MP 3.671-2.755



B.M. # 123 SPIKE IN ROOT OF 12" HEMLOCK 28 FT. RT. OF STA. 166+54. ELEV. 848.94.
 B.M. # 124 SPIKE IN ROOT OF 10" Y. BIRCH 19 FT. LT. OF STA. 173+64. ELEV. 826.23

TOPSHAM
 SERIES STATE NO 169L
 SHEET 3 OF 3

DIST. # 9 PLANS