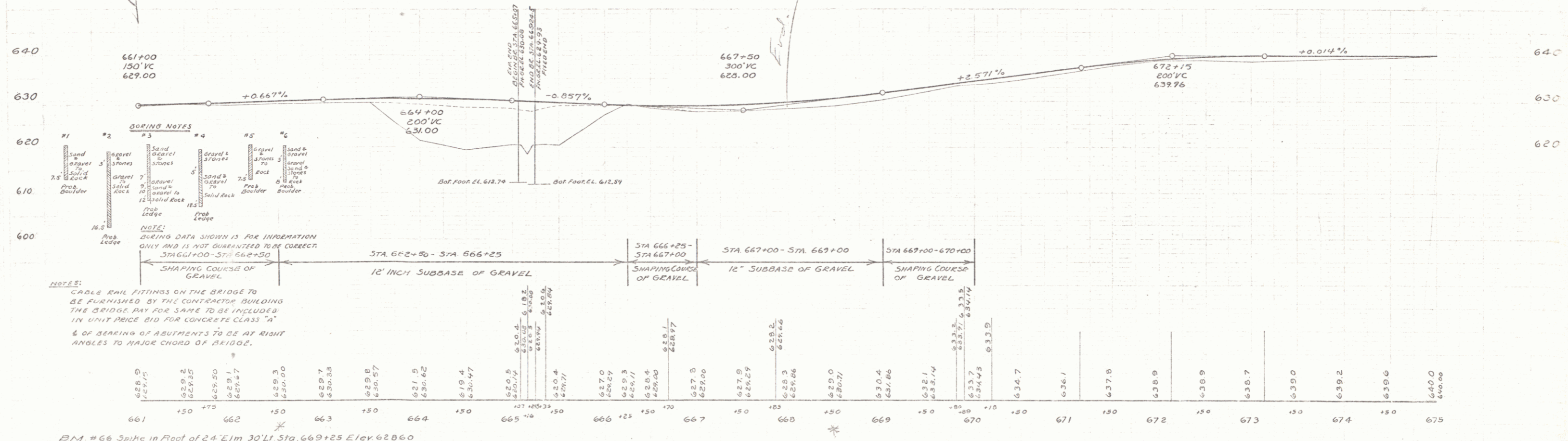
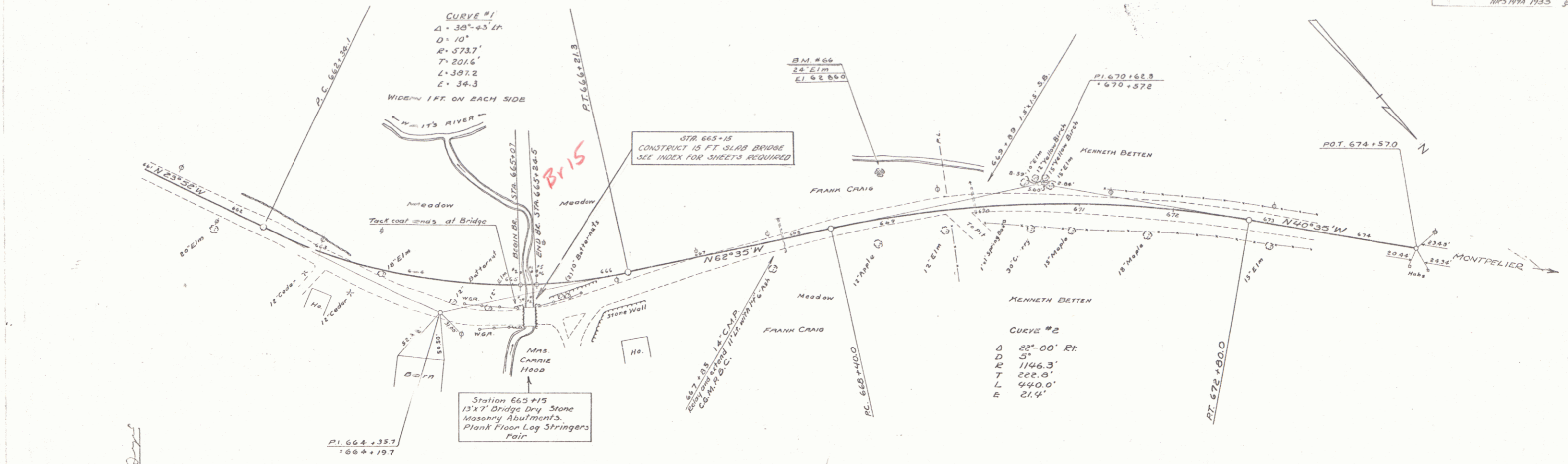


AD WOOD
 CIVIL ENGINEER
 3/1/1933

AD WOOD
 CIVIL ENGINEER
 3/1/1933



BORING NOTES

#1	#2	#3	#4	#5	#6
16.3 Prob. Boulder	16.3 Prob. Boulder	16.3 Prob. Boulder	16.3 Prob. Boulder	16.3 Prob. Boulder	16.3 Prob. Boulder

NOTES:
 1. CABLE RAIL FITTINGS ON THE BRIDGE TO BE FURNISHED BY THE CONTRACTOR BUILDING THE BRIDGE. PAY FOR SAME TO BE INCLUDED IN UNIT PRICE BID FOR CONCRETE CLASS "A".
 2. BEARING OF ABUTMENTS TO BE AT RIGHT ANGLES TO MAJOR CHORD OF BRIDGE.

BM #66 Spike in Root of 24' Elm 30' Lt Sta. 669+25 Elev. 628.60

6