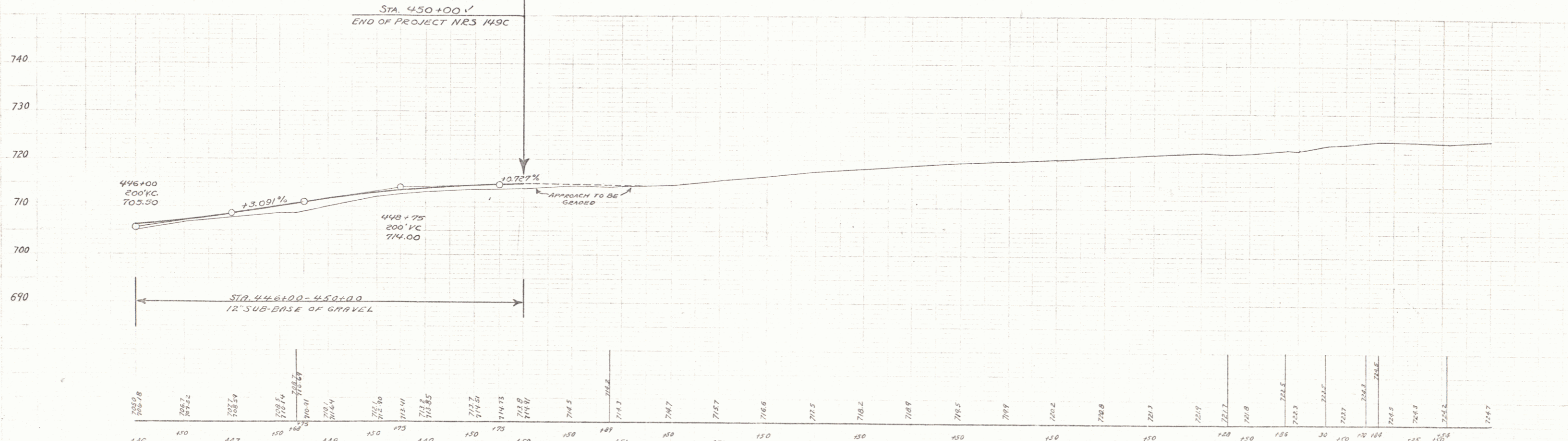
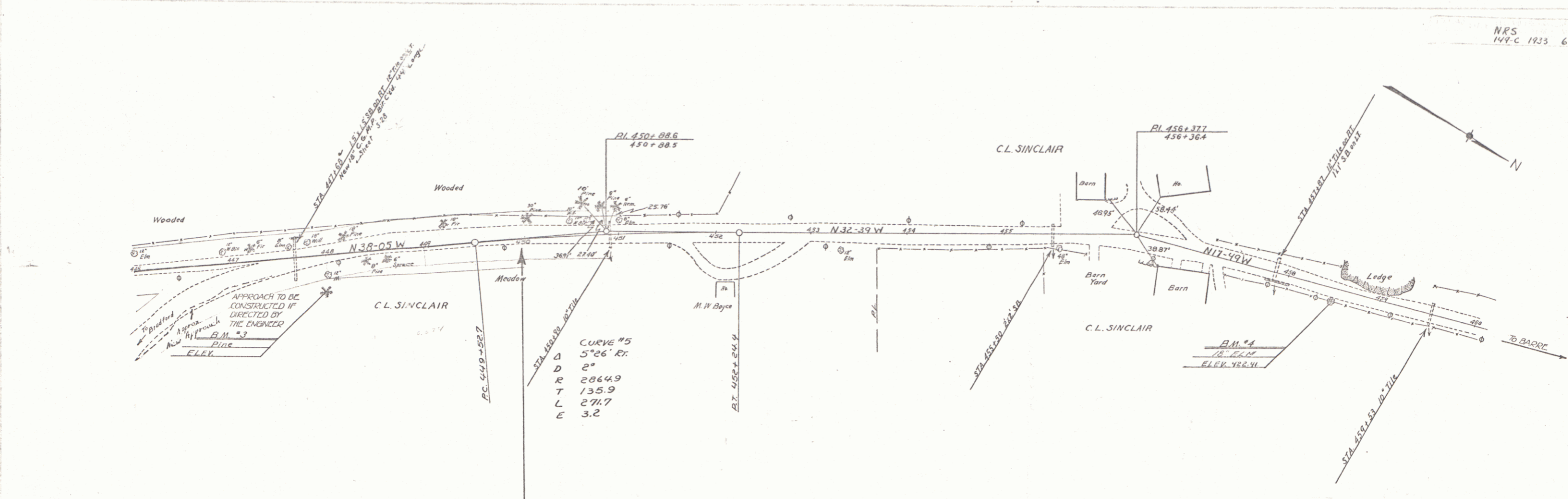
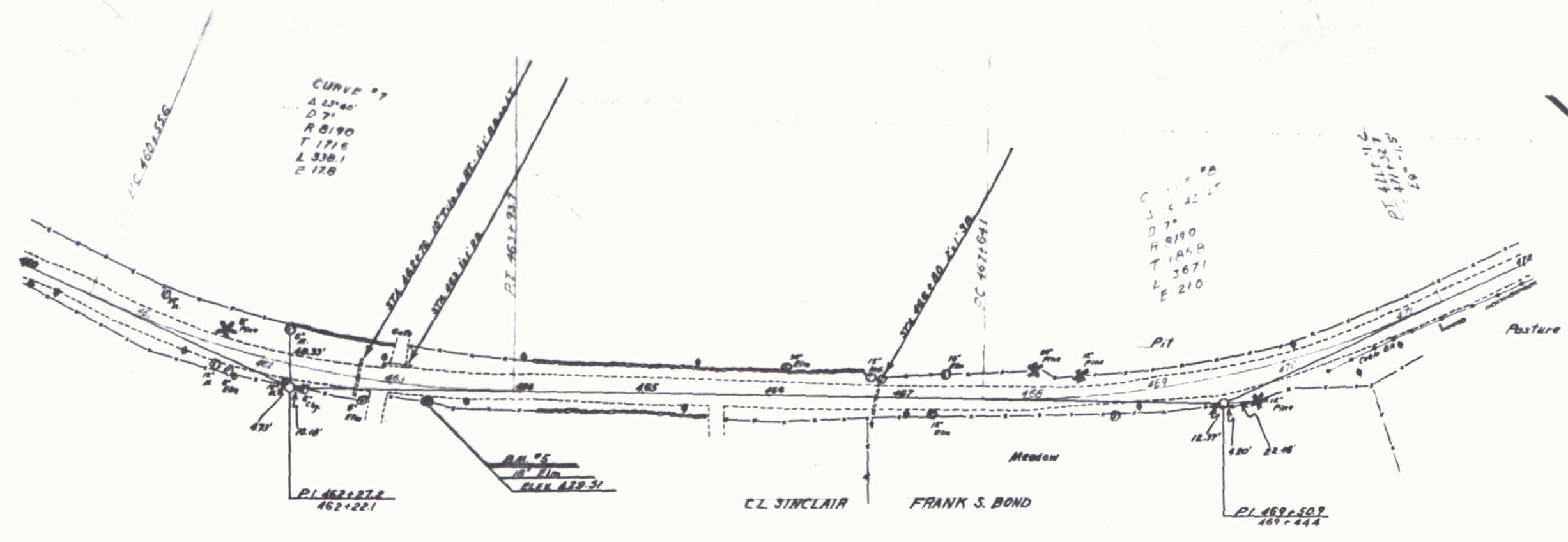


B.M. # 2 U.S.G.S. B.M. ON CONCRETE BRIDGE 12' RT. STA 427+92 (C LINE) ELEV. 664.80

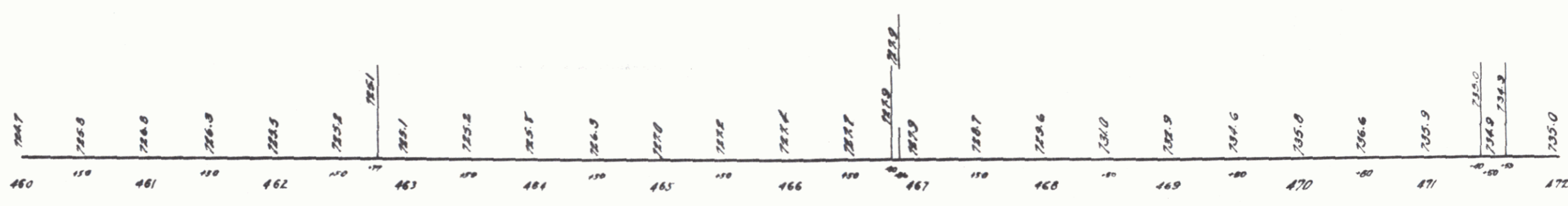


B.M. #4 SPIKE IN ROOT OF 18" OLM 16' FT. OF STA 458+48 ELEV. 482.41

460
SERIES NRS NO 149C
SHEET 6 OF 19



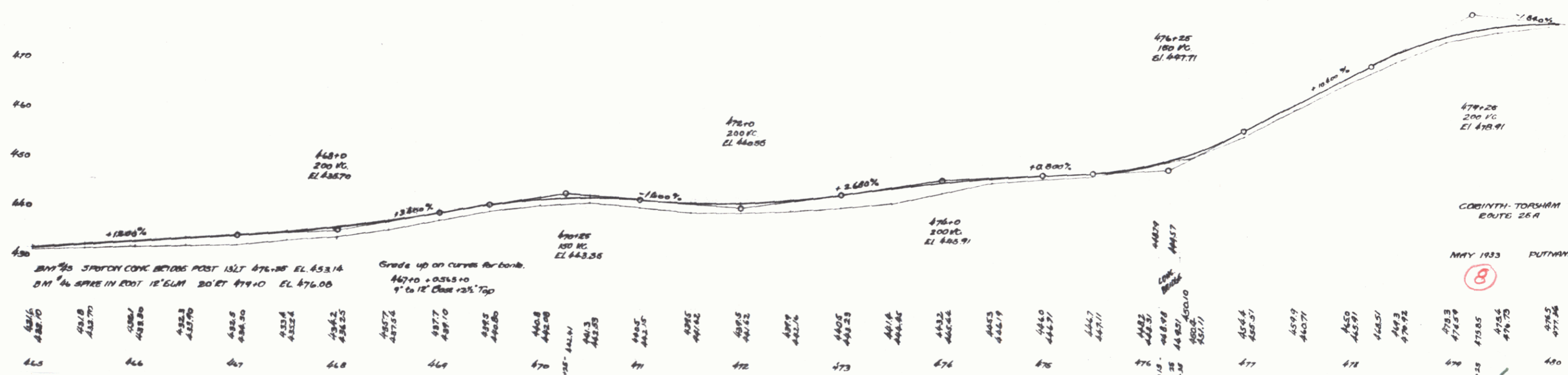
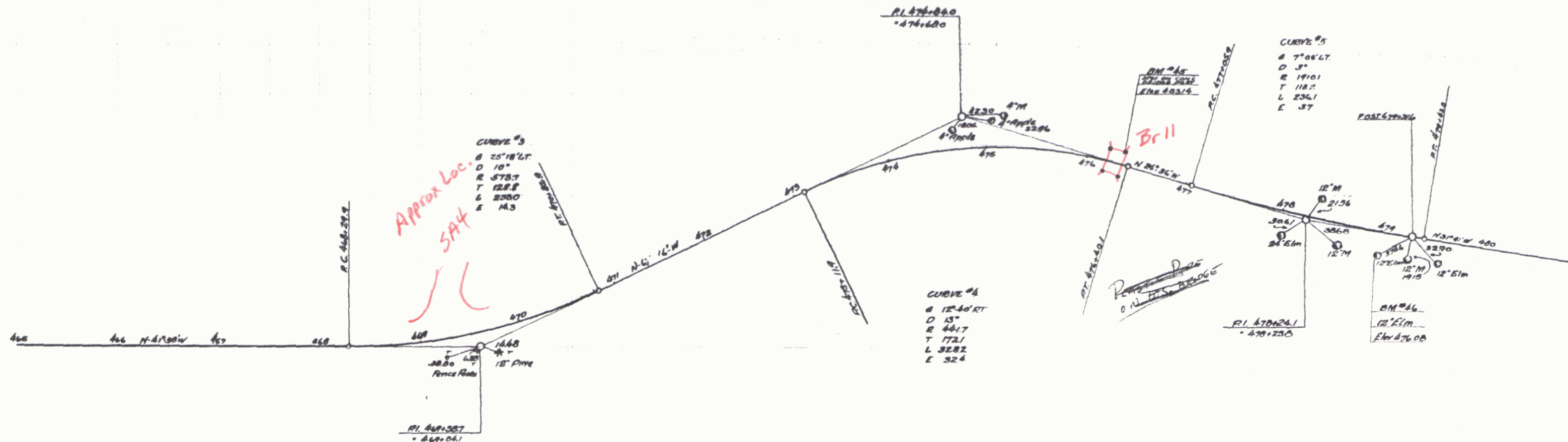
740
 730
 720

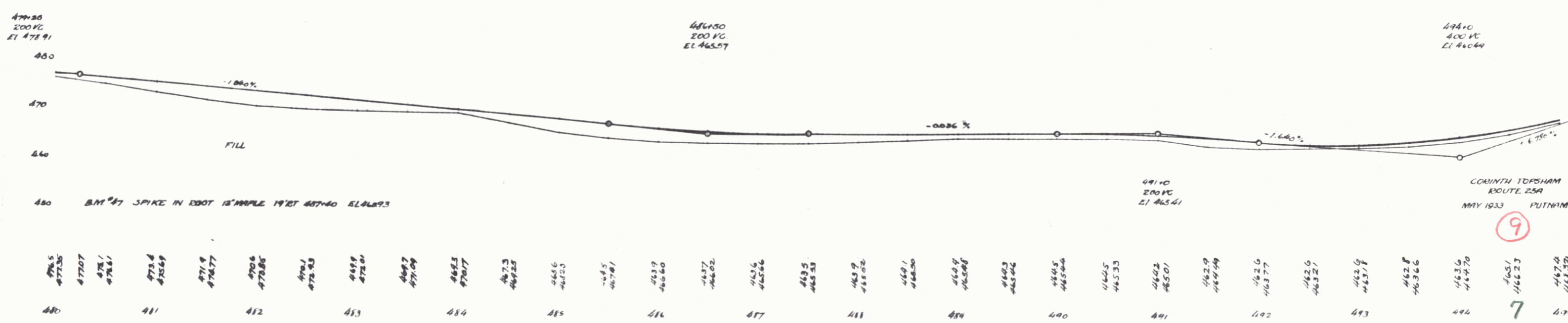
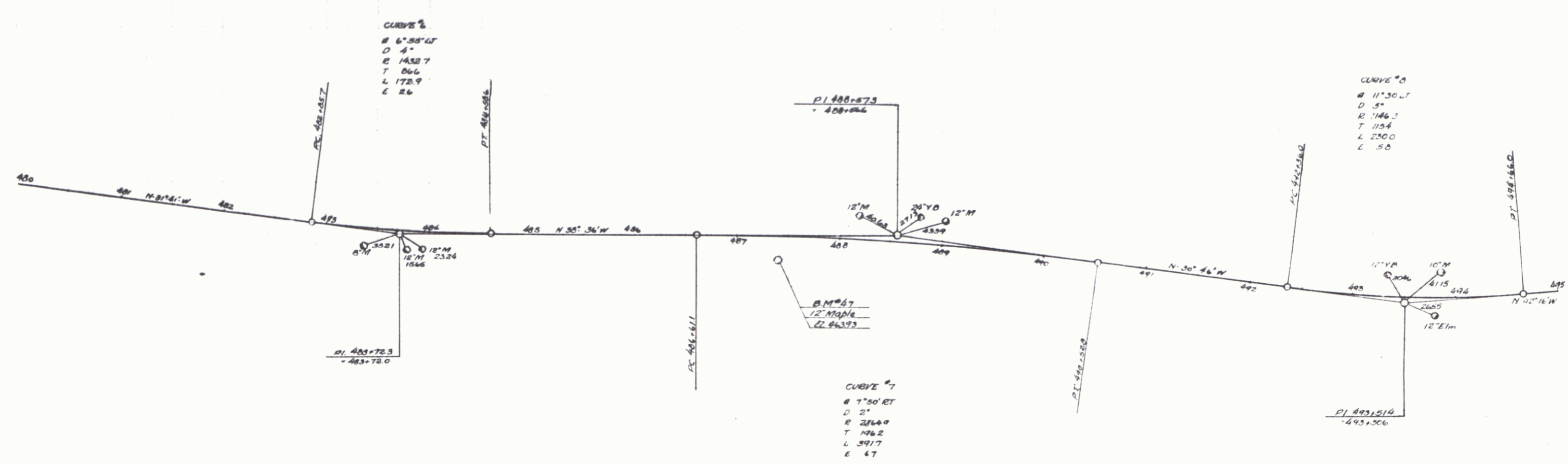


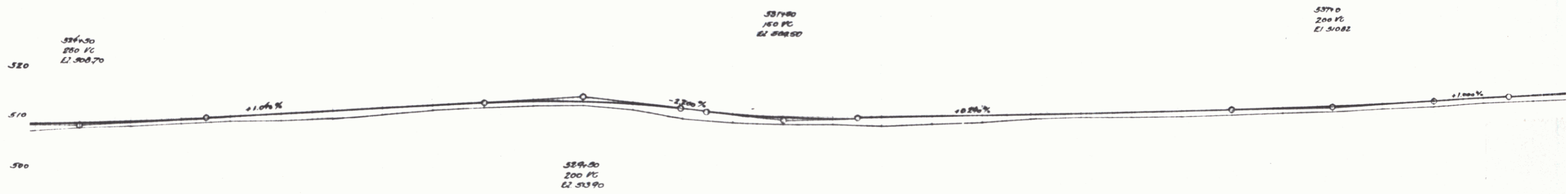
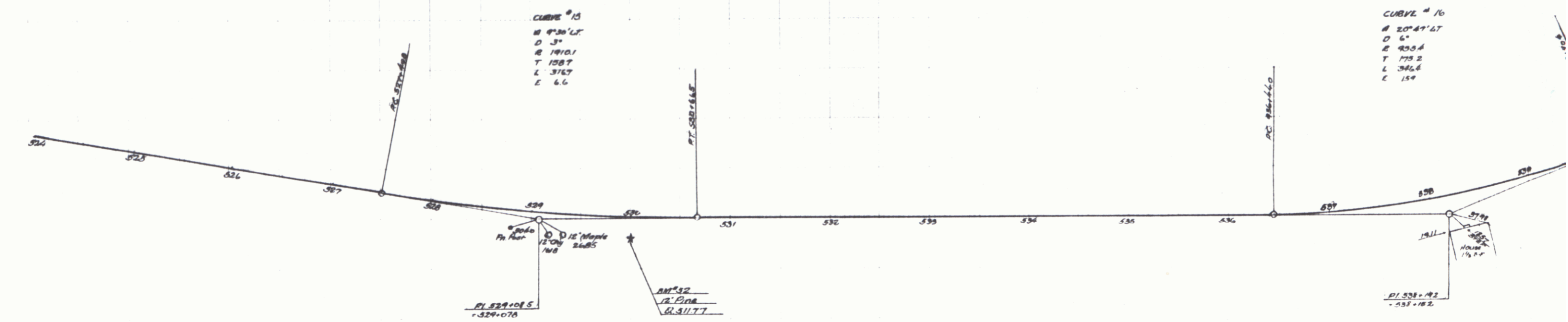
0 IN "5" SPIKE IN ROOT OF 18" LIM 13 FT RE OF STR. 463+30 ELEV 829.51

7

5 CO-INTH







COBINTH-TORSHAM ROUTE 26A
MAY 1933 PUTNAM

BM #58 SPIKE IN ROOT 12" PINE 50010 ET 18 FT.

5077 50906	5072 50915	5083 50928	5090 50976	51000	5084 50926	5094 50977	5099 51136	5106 51182	5114 51234	5120 51286	5122 51318	5122 51309	5111 51260	5098 51176	5115 50990	5090 50945	5095 50976	5082 50947	5094 50982	5080 50974	5083 50982	5087 50948	5082 51010	5094 51022	5094 51024	5093 51046	5095 50988	5098 51078	5100 51121	5104 51137	5108 51143	5114 51223	51287 51280	51280		
524	525	526	527	528	529	530	531	532	533	534	535	536	537	538	539	540	541	542	543	544	545	546	547	548	549	550	551	552	553	554	555	556	557	558	559	560

