

INDEX OF SHEETS

SHEET NO. 1	TITLE PAGE
2	TYPICAL CROSS-SECTION OF IMPROVEMENT
3	BROWNING AND WASHINGTON TABLES
4-5	PLAN AND PROFILE SHEETS
6	STANDARD STRUCTURE SHEET 5-28 PIPE CULVERTS
7	5-30 GUIDED RAIL
8	BARRICADES, SIGNS AND LIGHTS 5B-11
9	S.L.B. NO. 10 CR. (15' CLEAR SPAN)
10	EQUIPMENT DETAILS
11	S.B. NO. 2 TYPICAL DETAILS - 3.204, 3.220, 3.221
12	S.B. NO. 2.0
13	S.B. NO. 2.0
14-19	CROSS SECTIONS

Standard sheet 5-28 submitted to the Chief Engineer on May 10, 1933.
Standard sheet 5-30 submitted to the Chief Engineer on Aug. 15, 1933.

FED. ROAD DIST. NO.	STATE	PROJECT NO.	FISCAL YEAR	SHEET NO.	TOTAL SHEETS
9	VT.	149-B	1933	1	19

STATE OF VERMONT
STATE HIGHWAY DEPARTMENT

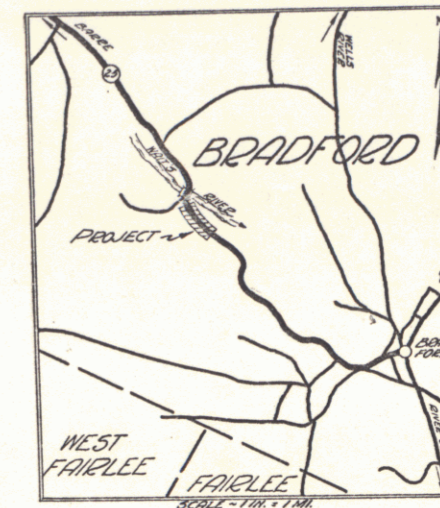
PLAN AND PROFILE OF PROPOSED
STATE HIGHWAY

NATIONAL RECOVERY SECONDARY PROJECT

TOWN OF BRADFORD
BRADFORD - BARRE ROAD

FROM A POINT 45 FT. SOUTH FROM THE RESIDENCE OF H.L. PRESCOTT NORTHERLY 0.384 MILES TO A POINT 200 FT. SOUTH FROM STEEL BRIDGE OVER WAIT'S RIVER

LENGTH OF PROJECT 2026.1 FT. = 0.384 MILES
1023.7 0.383



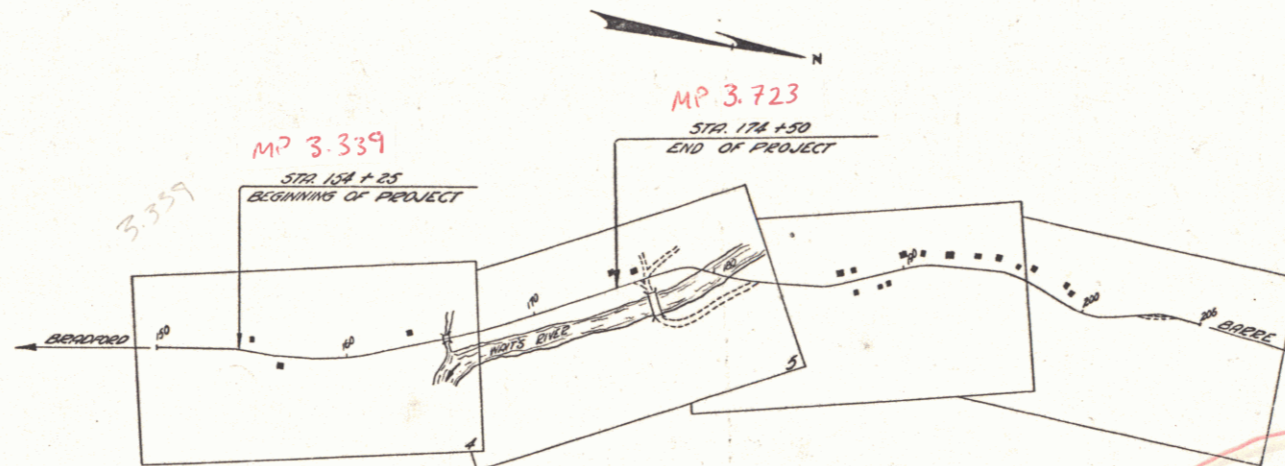
RECORD PLANS

RIGHT-OF-WAY DIVISION
TOWN FILE

PERPETUAL

Town of VT 25
(To Be Returned To Approved Dec. 13, 1933)

H.E. Prescott
Commissioner of Highways
SUBMITTED BY ORDER OF THE STATE HIGHWAY BOARD



SCALES

TITLE	1" = 500'
PLAN	1" = 50'
PROFILE	1" = 20'
CROSS SECTIONS	1" = 5'

Date 12/13/1933
Proj # NRS 149-B
Plan # 00R 303

Note - These plans are subject to such revisions as may be required by the Bureau of Public Roads or the Commissioner of Highways. Construction is to be carried on in accordance with the Standard Road and Bridge Specifications of 1930 with all subsequent approved revisions and such specifications and special provisions as are submitted with the plans.

NOTE: ANY FURTHER INFORMATION CONCERNING FINAL QUANTITIES, AMOUNTS OR KINDS OF MATERIALS RELATIVE TO THIS PROJECT MAY BE FOUND IN EITHER THE FIELD BOOKS OR THE ESTIMATE FILE.

PROJECT: Bradford
NUMBER: NRS 149-B
TYPE: C.R. (Main) (C.R.)
CONTRACTOR: S. & F. Rice Assoc.
LOCATION: See Site Card

CONVENTIONAL SIGNS

GROUND ELEVATION	DATUM	LINE
GRADE ELEVATION	DATUM	LINE
CURVE DATA		
DEFLECTION ANGLE	Δ	
DEGREE OF CURVE	D	
RADIUS OF CURVE	R	
TANGENT DISTANCE	T	
LENGTH OF CURVE	L	
EXTERNAL DISTANCE	E	
POINT OF INTERSECTION	P. I.	
POINT OF CURVE	P. C.	
POINT OF TANGENT	P. T.	
POINT ON TANGENT	P. O. T.	

RECOMMENDED _____
DISTRICT ENGINEER BUREAU OF PUBLIC ROADS

RECOMMENDED FOR APPROVAL _____
CHIEF ENGINEER BUREAU OF PUBLIC ROADS

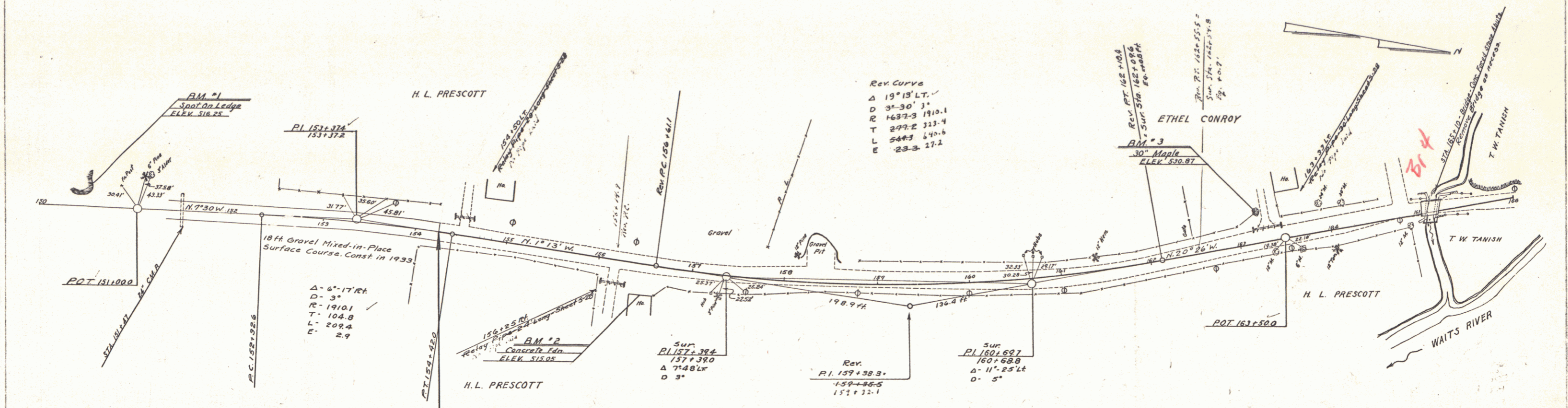
APPROVED _____
DIRECTOR - BUREAU OF PUBLIC ROADS

CORRECTED: Dec. 13, 1933
SHEET 1 OF 19

DRAINAGE REQUIREMENTS

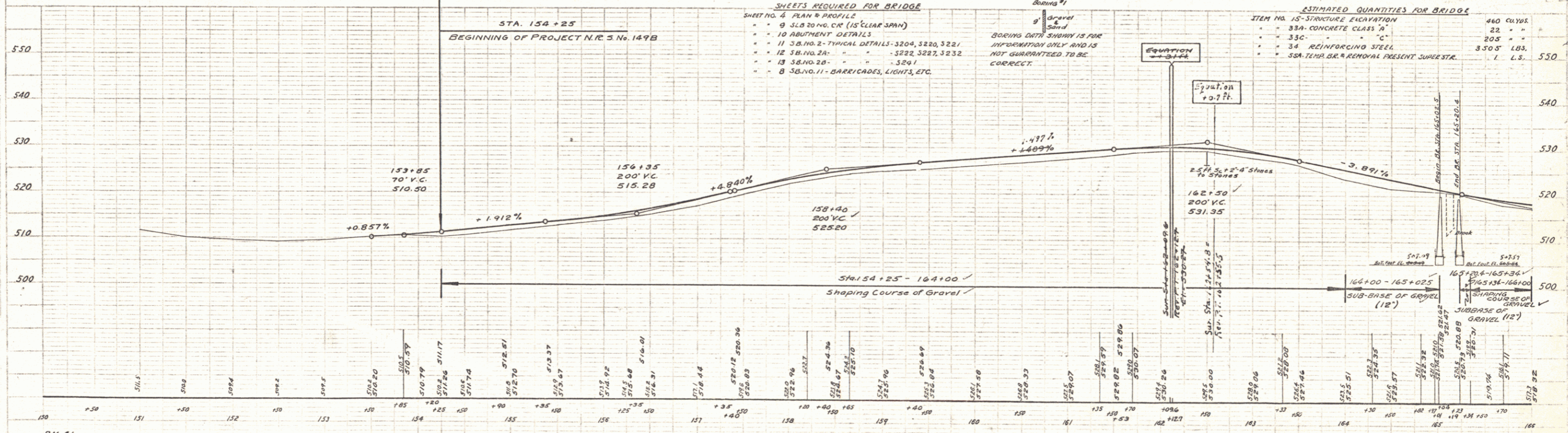
STATION	POSITION	LENS	RELAY PIPE	C.R.M.
164+50	L.R.	80'	+	2-5
154+25	R.R.	24'	+	2-8
163+23	L.R.	90'	+	2-2

NRS
199 1933 4 19



- SHEETS REQUIRED FOR BRIDGE**
- SHEET NO. 4 PLAN & PROFILE
 - 9 S.B. 20 NO. CR (15' CLEAR SPAN)
 - 10 ABUTMENT DETAILS
 - 11 S.B. NO. 2-TYPICAL DETAILS-3204, 3220, 3221
 - 12 S.B. NO. 2A - " - " - 3222, 3227, 3232
 - 13 S.B. NO. 2B - " - " - 3241
 - 8 S.B. NO. 11 - BARRICADES, LIGHTS, ETC.

- ESTIMATED QUANTITIES FOR BRIDGE**
- ITEM NO. 15-STRUCTURE ELEVATION 460 CU. YD.
 - 33A-CONCRETE CLASS 70 25 "
 - 33C- " " " 20.5 "
 - 34-REINFORCING STEEL 3,505 LBS.
 - S&A-TERR. OR. REMOVAL PRESENT SUPERSTR. 1 L.S.



BM #1 SPOT ON LEDGE 18' LT. OF STA 150+00 ELEV 516.25
 BM #2 SPOT ON CONCRETE FOUNDATION OF HOUSE 33' RT. OF STA 157+50 ELEV 515.05
 BM #3 SPIKE IN ROOT OF 30' MAPLE 33' LT. OF STA 163+23 ELEV 510.87

SERIES NRS NO 149-B
 SHEET 4 OF 19

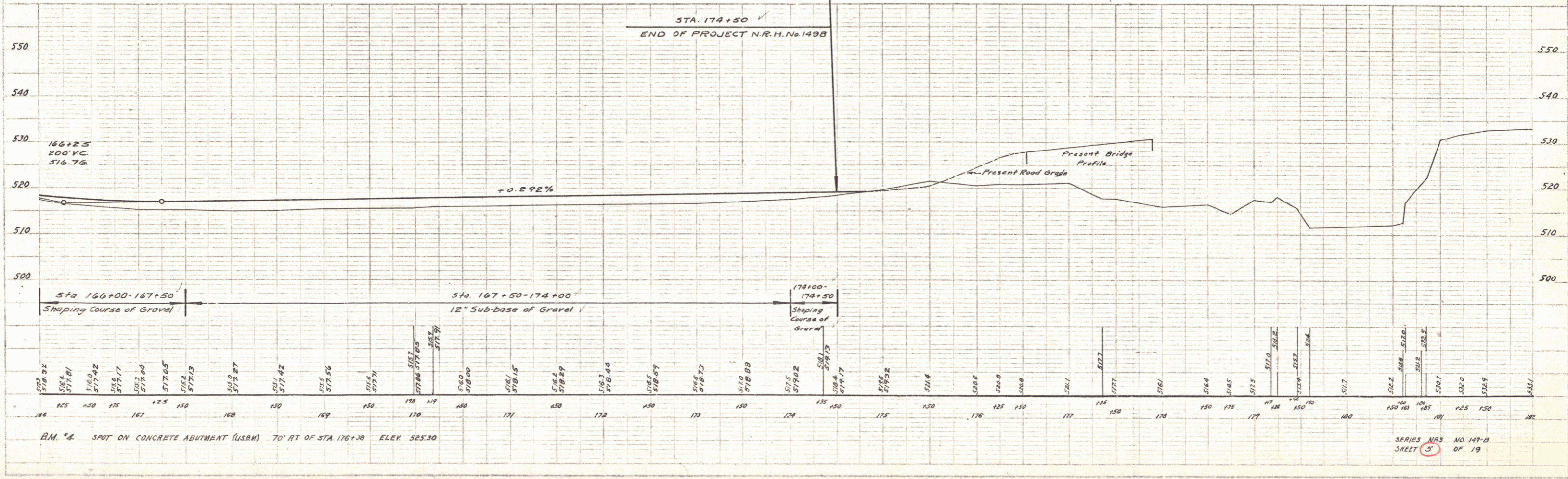
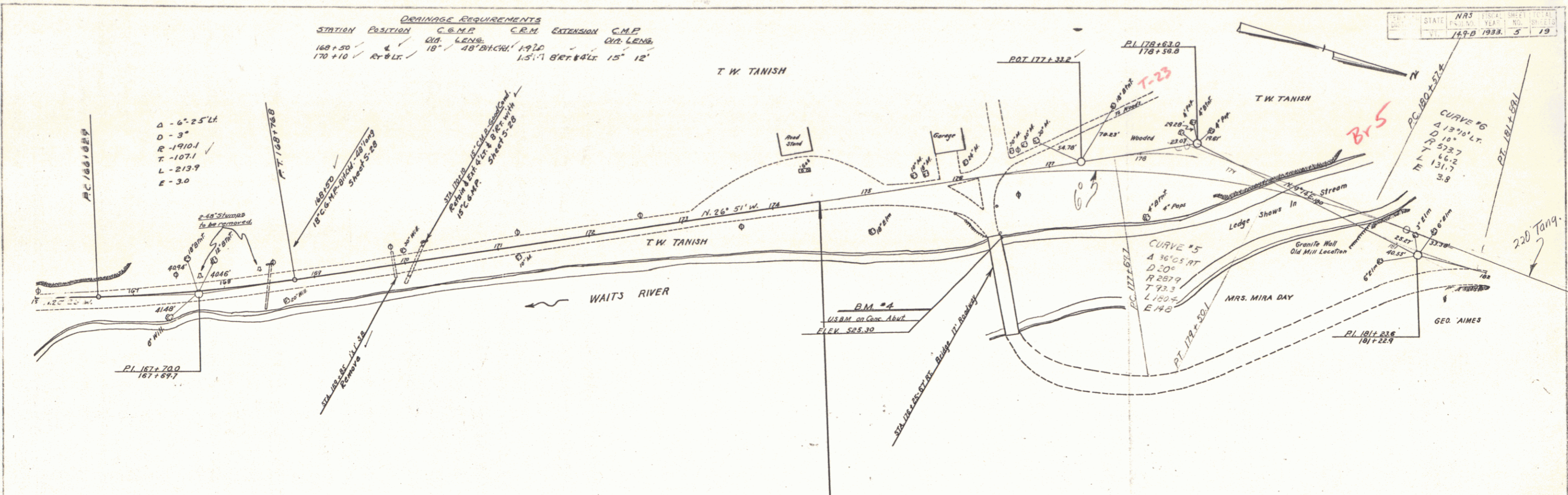
WOOD
BIRLOW
1/16

WOOD
BIRLOW
1/16

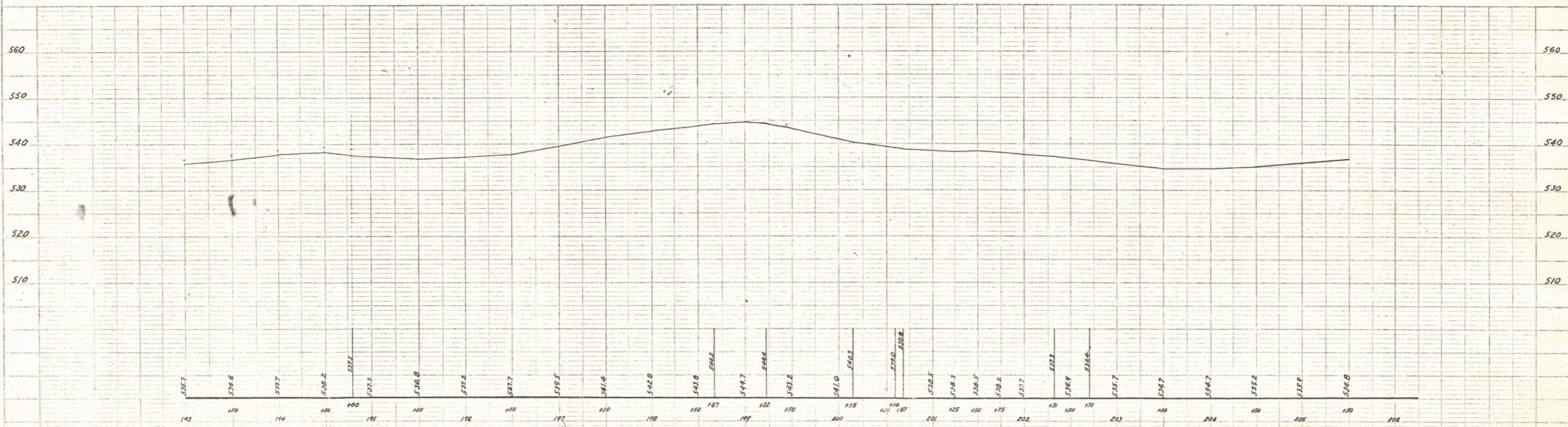
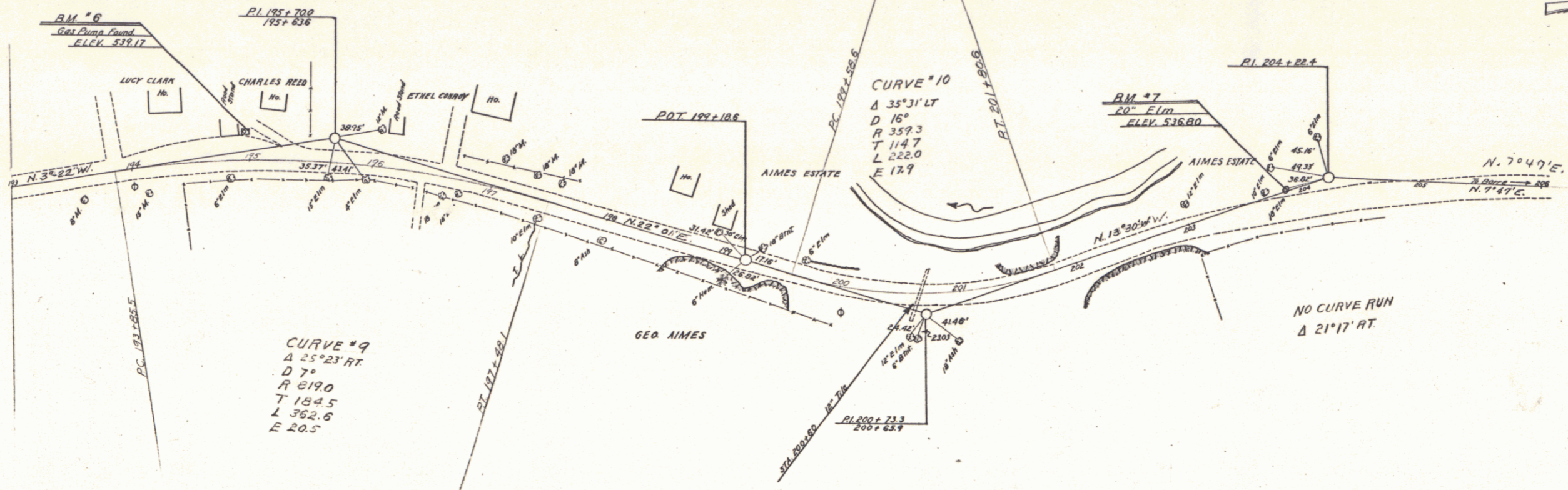
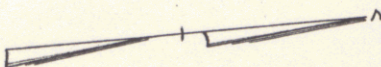
STATION POSITION C.M.P. C.M.P. EXTENSION C.M.P. EXTENSION C.M.P.

168+50	170+10	170+10	170+10	170+10	170+10
170+10	170+10	170+10	170+10	170+10	170+10

NRS
STATE
1933
5
19



SERIES NRS NO 149-D
SHEET 3 OF 19



B.M. #6 SPOT ON GAS PUMP FOUNDATION 21.5' LT. OF STA. 1941.94 ELEV. 539.17
 B.M. #7 SPIKE IN ROOT OF 20' ELM. 1' LT. OF STA. 2031.05 ELEV. 536.00

SERIES NRS NO. 189-D
 SHEET 7 OF

WOOD
 SIBELON

WOOD
 SIBELON