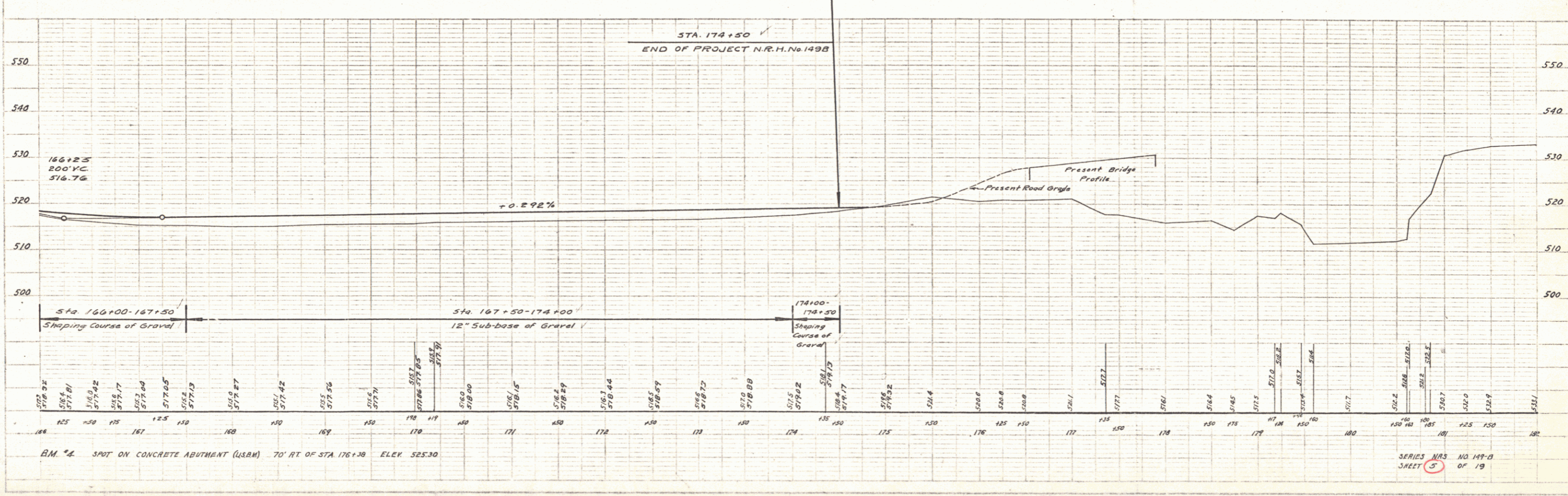
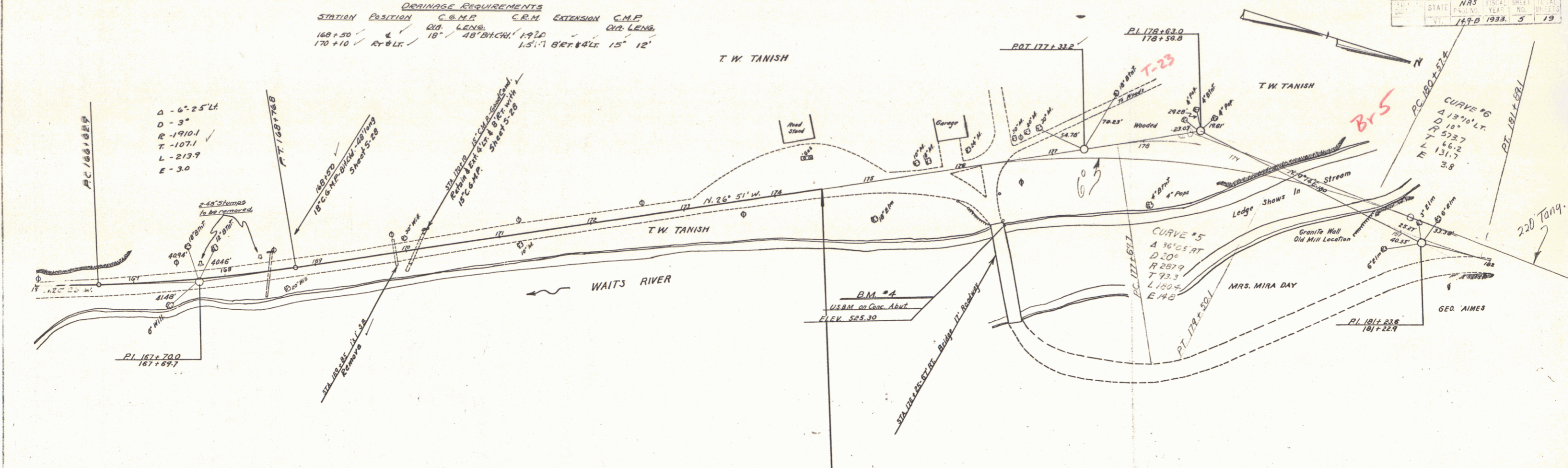


WOOD
BIRLOW
1/16

WOOD
BIRLOW
1/16

STATION POSITION C.M.P. EXTENSION C.M.P. DRAINAGE REQUIREMENTS
 168+50 R-8 LF 18" 40" DITCH 1:9.2
 170+10 R-8 LF 18" 40" DITCH 1:5.7 8" REF #4 LE 15" 12"

NRS
 STATE NO. 149-B
 YEAR 1933
 SHEET NO. 5
 OF 19



SERIES NRS NO 149-B
 SHEET 5 OF 19