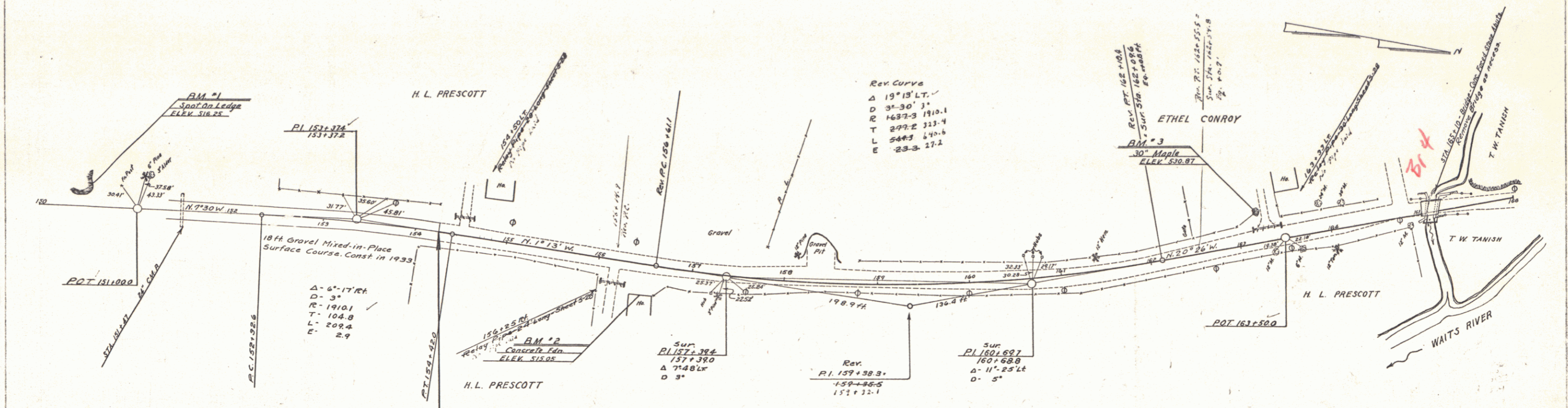


DRAINAGE REQUIREMENTS

| STATION | POSITION | LENS | RELAY PIPE | C.R.M. |
|---------|----------|------|------------|--------|
| 164+50 | L.R. | 80' | + | 2-5 |
| 154+25 | R.R. | 24' | + | 2-8 |
| 163+23 | L.R. | 90' | + | 2-2 |

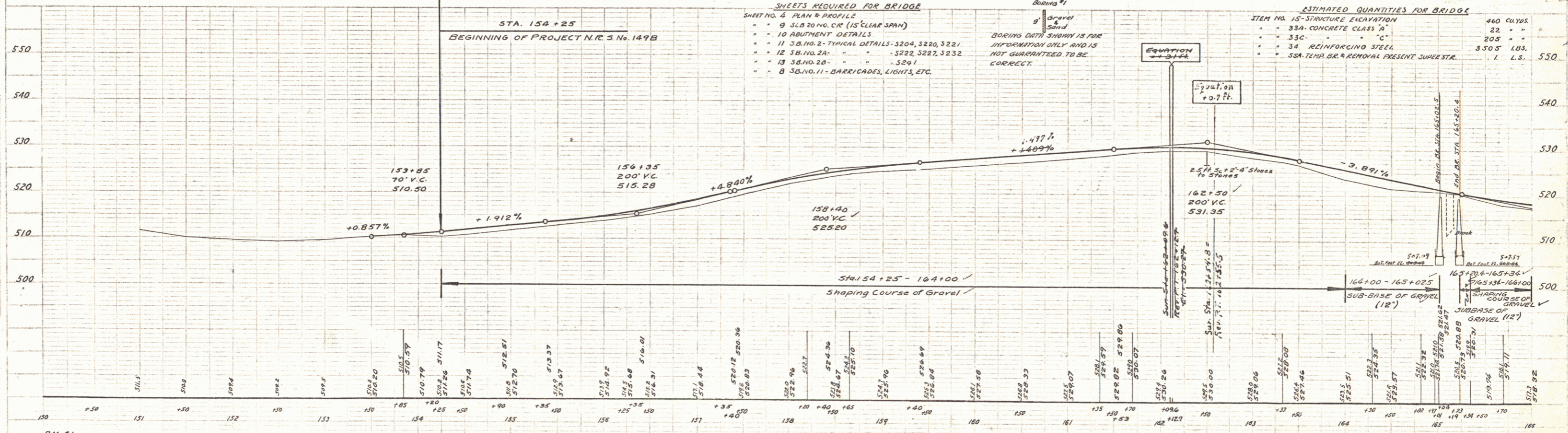
NRS
199 1933 4 19



- SHEETS REQUIRED FOR BRIDGE**
- SHEET NO. 4 PLAN & PROFILE
 - 9 S.B. 20 NO. CR (15' CLEAR SPAN)
 - 10 ABUTMENT DETAILS
 - 11 S.B. NO. 2-TYPICAL DETAILS-3204, 3220, 3221
 - 12 S.B. NO. 2A - " - " - 3222, 3227, 3232
 - 13 S.B. NO. 2B - " - " - 3241
 - 8 S.B. NO. 11-BARRICADES, LIGHTS, ETC.

ESTIMATED QUANTITIES FOR BRIDGE

| ITEM NO. | STRUCTURE ELEVATION | QTY | UNIT |
|----------|--------------------------------------|-------|------|
| 33A | CONCRETE CLASS 7A | 25 | CY |
| 33C | " " " C | 20.5 | " |
| 34 | REINFORCING STEEL | 350.5 | LBS. |
| 35A | TEMP. BRK. REMOVAL PRESENT SUPERSTR. | 1 | L.S. |



BM #1 SPOT ON LEDGE 18' LT. OF STA 150+40 ELEV. 516.25
 BM #2 SPOT ON CONCRETE FOUNDATION OF HOUSE 33' RT. OF STA 151+50 ELEV. 515.05
 BM #3 SPIKE IN ROOT OF 30' MAPLE 33' LT. OF STA 163+23 ELEV. 510.87

SERIES NRS NO 149-B
 SHEET 4 OF 19