

INDEX OF SHEETS

1	TITLE PAGE
2	TYPICAL CROSS-SECTION OF IMPROVEMENT (SINGLE TACK COAT OF CUTBACK ASPHALT WITH CRUSHED PEASTONE ITEM 314-B MODIFIED)
3	ROADWAY STANDARD SHEET RS 56-1
4	DRAINAGE & ITEM DETAIL QUANTITY SHEET
5	EARTHWORKS SHEET
6-9	PLAN & PROFILE SHEETS
10	DETAILS OF CGMPP AT STA 27+45
11-12A	CHANNEL SECTION SHEETS
13	ROADWAY STANDARD SHEET RS 56-3
14	" " " " RS 56-4
15	" " " " RS 56-6
15-A	" " " " RS 56-9
16	" " " " RS 56-11
17	" " " " RS 56-12
18-29	CROSS SECTIONS

STATE OF VERMONT
DEPARTMENT OF HIGHWAYS

PROPOSED IMPROVEMENT

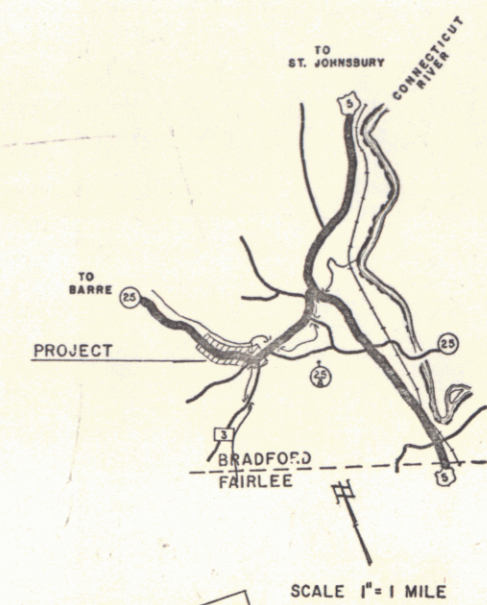
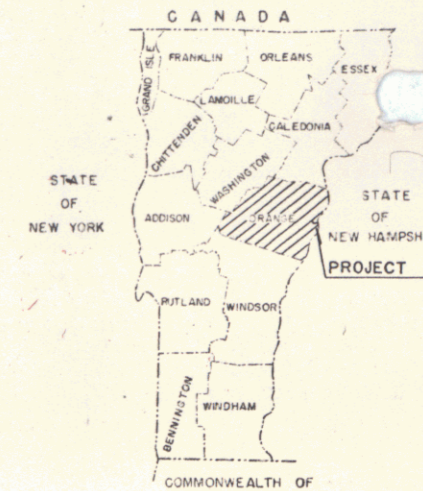
FEDERAL
AID SECONDARY PROJECT

TOWN OF BRADFORD
COUNTY OF ORANGE
VERMONT ROUTE 25

BEGINNING AT A POINT APPROXIMATELY 4.7 MILES SOUTHEASTERLY FROM BRADFORD-CORINTH TOWN LINE AND EXTENDING SOUTHEASTERLY 0.654 MILES

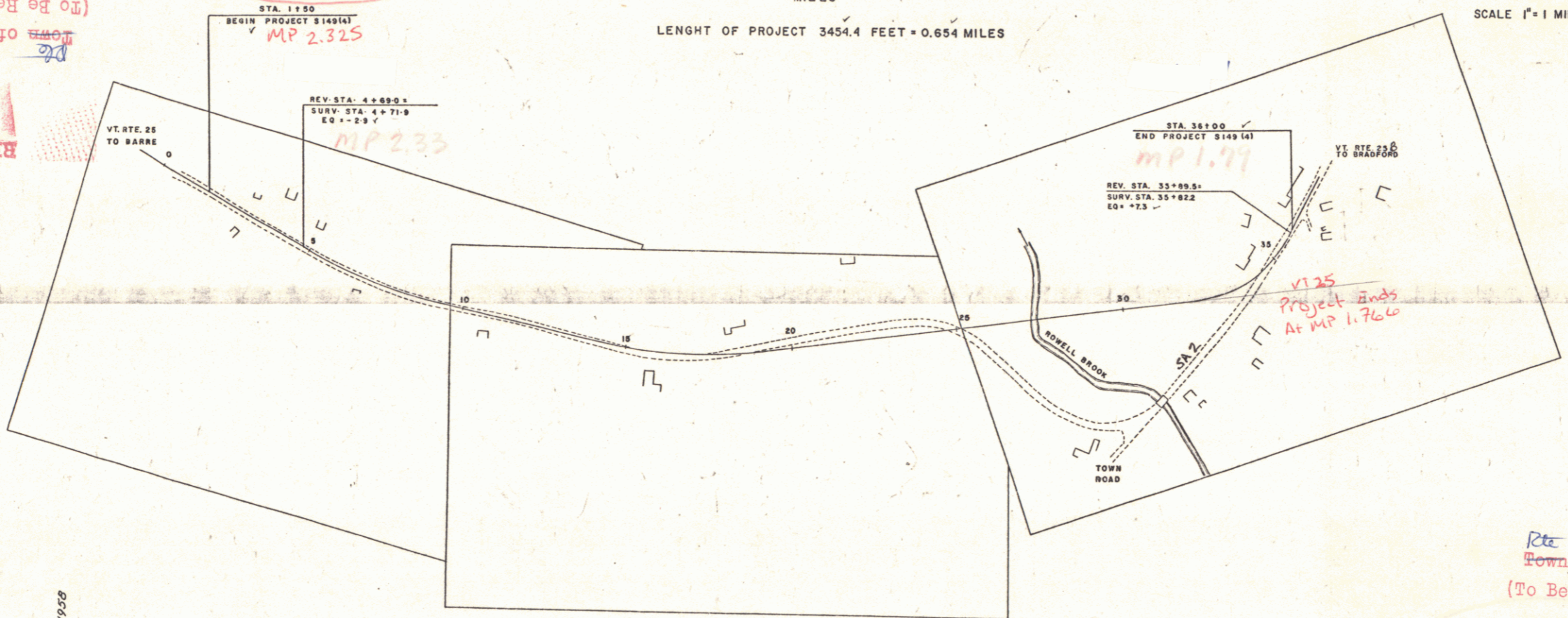
LENGTH OF PROJECT 3454.4 FEET = 0.654 MILES

FIELD ROAD	STATE	PROJECT NUMBER	SHEET NUMBER	TOTAL SHEETS
1	VT			



PROJECT NAME AND NUMBER	TYPE	PAVT	AREA
BRADFORD S 149 (A)	SNGL.TK.	7676	S.V.
RECORD PLANS			
PEASTONE - WELLS-LANSON, BARRE	METAL PIPE - N.E. MET. PIPE, WHITE RIV. JUNTN		
ASPHALT - KOPPEL, PROV. R.I.	STEEL POSTS - BETHLEHEM, STEEL		
RCR - VT. CONC. PIPE, WINDSOR, VT	SHARD RAIL - BETHLEHEM, STEEL		
	GRAVEL - PETER'S PIT, BRADFORD, VT		
CONTRACTOR - DUNCAN U. HUNTER	CONTRACT DATED - MARCH 6, 1958		
RESIDENT ENGINEER - A. S. NELSON	CONTRACT STARTED - MARCH 14, 1958		
INSPECTOR - NONE	CONTRACT COMPLETED - OCTOBER 6, 1958		
RECORD PLANS - T. KAMBOUR	CONTRACT ACCEPTED - OCTOBER 14, 1958		

(To Be Returned To R.O.W. Division)
Town of U25
PERPETUAL
RIGHT-OF-WAY DIVISION



SCALE 1" = 1 MILE

RIGHT-OF-WAY DIVISION
TOWN FILE
PERPETUAL
Town of U25
(To Be Returned To R.O.W. Division)

COUNT	
TOWN	BRADFORD
FENCE	
STONE	
UNFEE	
SURV	
TRAV	
RAIL	
RETA	
CENT	
SURV	
CUNVI	
DROP	
TROL	
POWE	
TELE	
TREE	
METGE	

BRADFORD S 149 (A)	CONTRACTOR - DUNCAN U. HUNTER
RECORD PLANS - T. KAMBOUR	CONSTRUCTION COMPLETED - OCTOBER 6, 1958
LOCATION	Beginning of road approx. 4.7 miles S.E. from Bradford-Corinth town line and extending S.E. 0.654 miles

GROUND ELEVATION	DATUM	LINE
	SEA LEVEL	RET. LINE
GRADE ELEVATION	DATUM	LINE
	SEA LEVEL	RET. LINE

CURVE DATA	
DEFLECTION OF ANGLE	Δ
DEGREE OF CURVE	D
RADIUS OF CURVE	R
TANGENT DISTANCE	T
LENGTH OF CURVE	L
EXTERNAL DISTANCE	E
POINT OF INTERSECTION	P.I.
POINT OF CURVE	P.C.
POINT OF TANGENT	P.T.
POINT ON TANGENT	P.O.T.
POINT ON SUB-TANGENT	P.O.S.T.

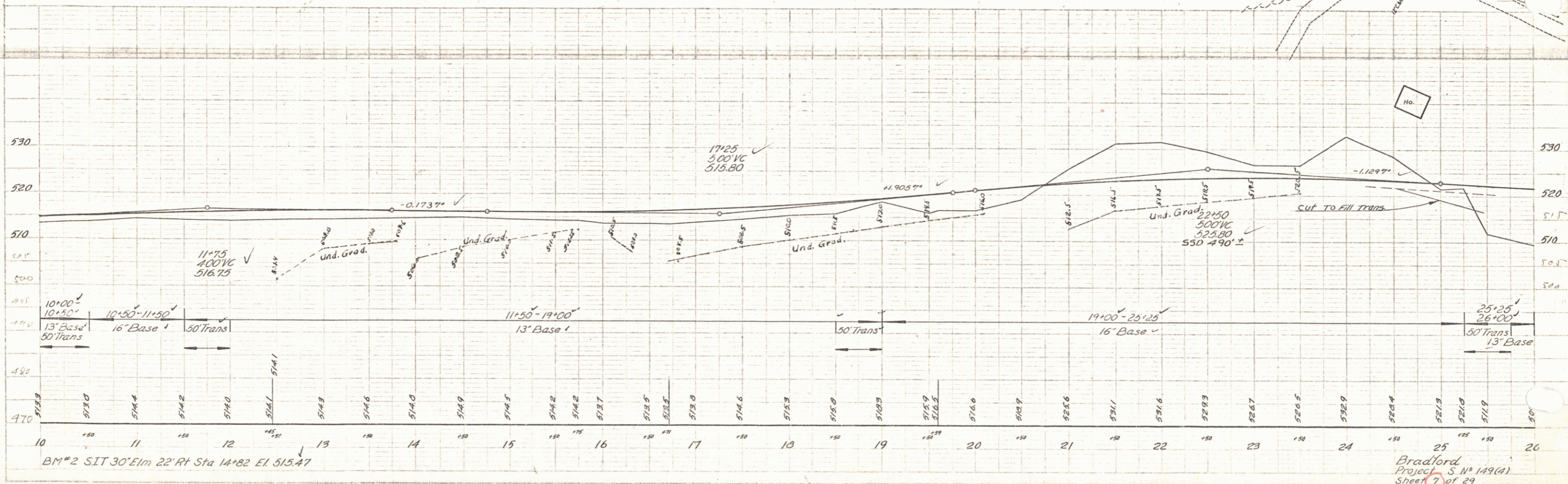
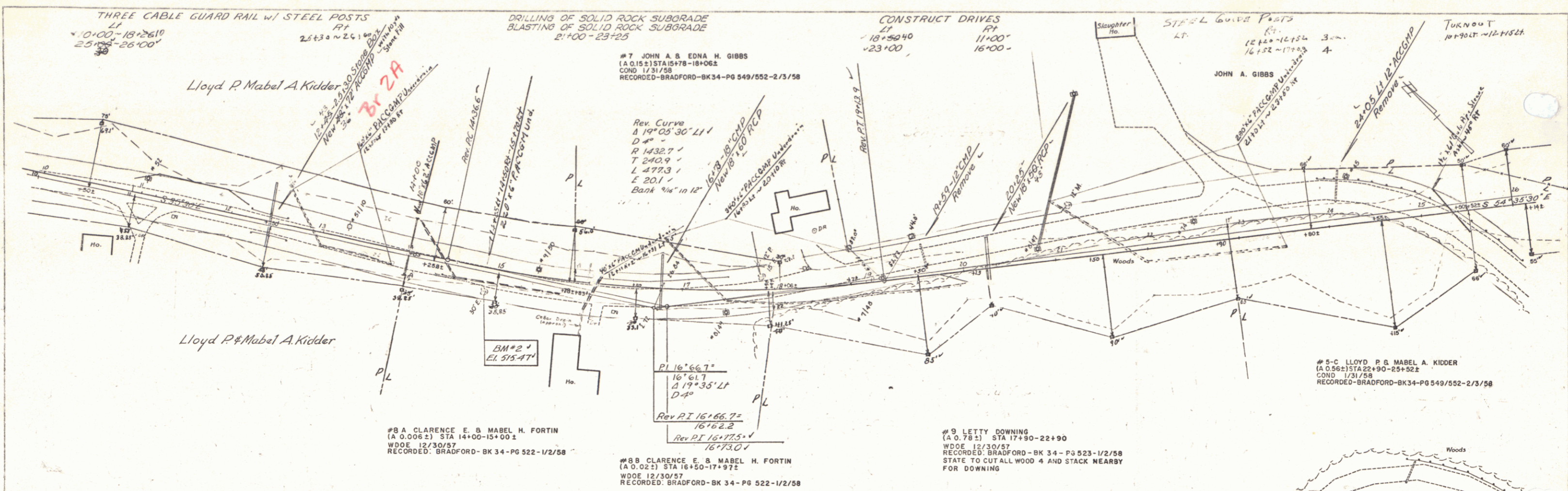
SCALES	
TITLE	1" = 200'
TYPICAL	1" = 2'
PLAN	1" = 50'
PROFILE HORIZONTAL	1" = 50'
PROFILE VERTICAL	1" = 10'
CROSS-SECTIONS	1" = 5'

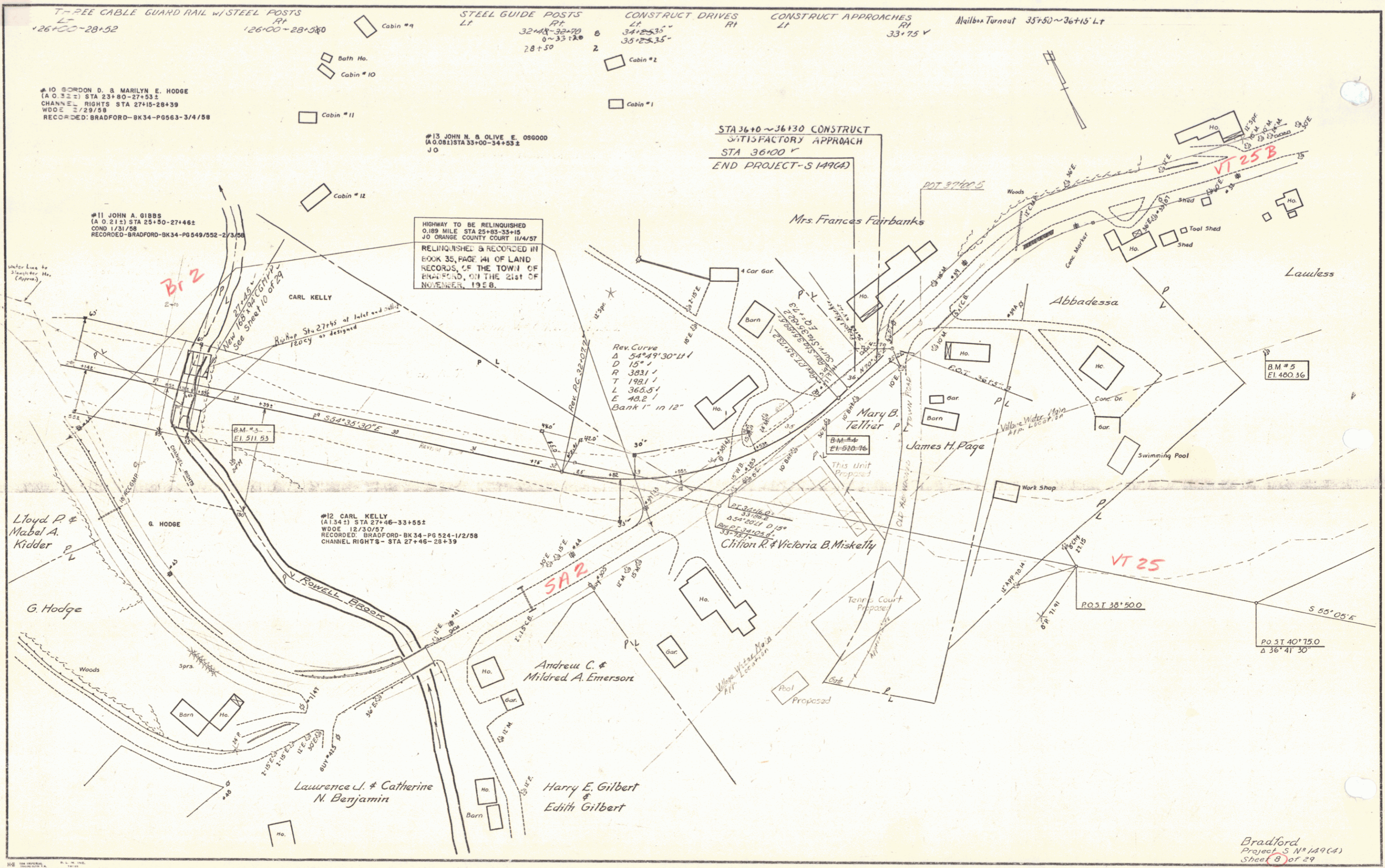
THESE PLANS ARE SUBJECT TO SUCH REVISIONS AS MAY BE REQUIRED BY THE BUREAU OF PUBLIC ROADS OR THE COMMISSIONER OF HIGHWAYS.
CONSTRUCTION IS TO BE CARRIED ON IN ACCORDANCE WITH THE PLANS AND THE STANDARD ROAD AND BRIDGE SPECIFICATIONS OF AS APPROVED BY THE BUREAU OF PUBLIC ROADS, INCLUDING ALL SUBSEQUENT APPROVED REVISIONS AND SUCH REVISED SPECIFICATIONS AND SPECIAL PROVISIONS AS ARE SUBMITTED WITH THE PLANS.

APPROVED	APPROVED	APPROVED	APPROVED	APPROVED	APPROVED
DATE	DATE	DATE	DATE	DATE	DATE

NOTE: ANY FURTHER INFORMATION CONCERNING FINAL QUANTITIES, AMOUNTS OR OTHER DETAILS RELATIVE TO THIS PROJECT MAY BE FOUND IN EITHER THE FIELD BOOKS OR THE ESTIMATE FILE.

DEPARTMENT OF COMMERCE	BUREAU OF PUBLIC ROADS
APPROVED	DATE
PROJECT S No. 149 (A)	
SHEET 1 OF 29 SHEETS	





Bradford
 Project S N 149(A)
 Sheet (8) of 29