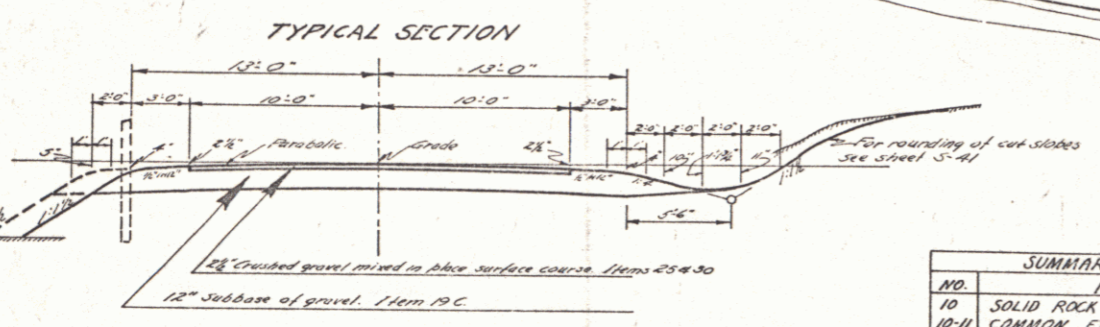
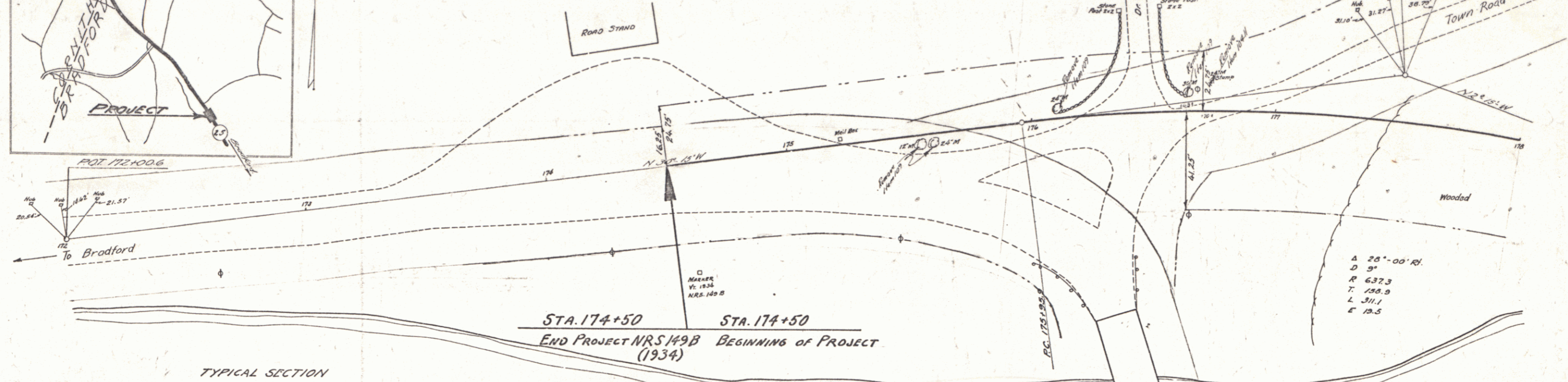


Note: The specification for "Cutting and Removing Trees", Item 109, shall be modified to include only such trees as measure twelve (12) inches or over in diameter, said diameter to be measured at a point two (2) feet above the ground line at the base of the tree.



TOWN OF BRADFORD  
Project ST 149  
Pin # 00R301  
Route VT 25  
Date 1/1/1939

MP 3.723-3.974  
RIGHT-OF-WAY DIVISION  
TOWN FILE  
PERPETUAL  
UT 25  
(To Be Returned To R.O.W. Division)

SUMMARY OF QUANTITIES		
NO.	ITEM	AMOUNT
10	SOLID ROCK EXCAVATION (ESTIMATED)	100 CY
10-H	COMMON ROCK EXCAVATION INCL. BORROW	6100 CY
18A	TRENCH EXCAVATION OF EARTH	75 CY
18B	TRENCH EXCAVATION OF ROCK	8 CY
15	CHANNEL EXCAVATION	1500 CY
16	STRUCTURE EXCAVATION	304 CY
19	MAINTENANCE OF TRAFFIC	1 LS
19C	SUB-BASE OF GRAVEL	1500 CY
25	CRUSHED GRAVEL MIXED-IN-PLACE SUP. COURSE WITH REFINED TAR	230 CY
30	REFINED TAR	440 GAL
41A	CONCRETE CLASS A	195 CY
41B	CONCRETE CLASS B	158 CY
41C	CONCRETE CLASS C	105 CY
42	REINFORCING STEEL	39,105 LBS
43B	STEEL SUPERSTRUCTURE (285,000#)	1 LS
45	CEMENT RUBBLE MASONRY	4 CY
49C	18" REINFORCED CONCRETE PIPE	88 LF
54	RELINING PIPE CULVERTS	34 LF
57	REMOVAL OF PRES. SUPERSTRUCTURE	1 LS
70	WOOD GUARD RAIL	24 LF
80A	CABLE GUARD RAIL	1110 LF
80B	ANCHORS FOR CABLE GUARD RAIL	4 EG
83	GUIDE POSTS	1 EG
109	CUTTING & REMOVING TREES	8 EG

CABLE GUARD RAIL				
STA.	STA.	LT.	RT.	AMT.
177+2.68	179+02.8		176'	1
177+37.8	179+29.8	192		1
181+10	181+24		16	1
181+57	184+49	318		1
SUB-TOTAL BRIDGE		504	192	2
TOTAL		2072	2072	4

WOOD GUARD RAIL				
STA.	STA.	LT.	RT.	AMT.
185+50			24'	

INDEX OF SHEET NUMBERS

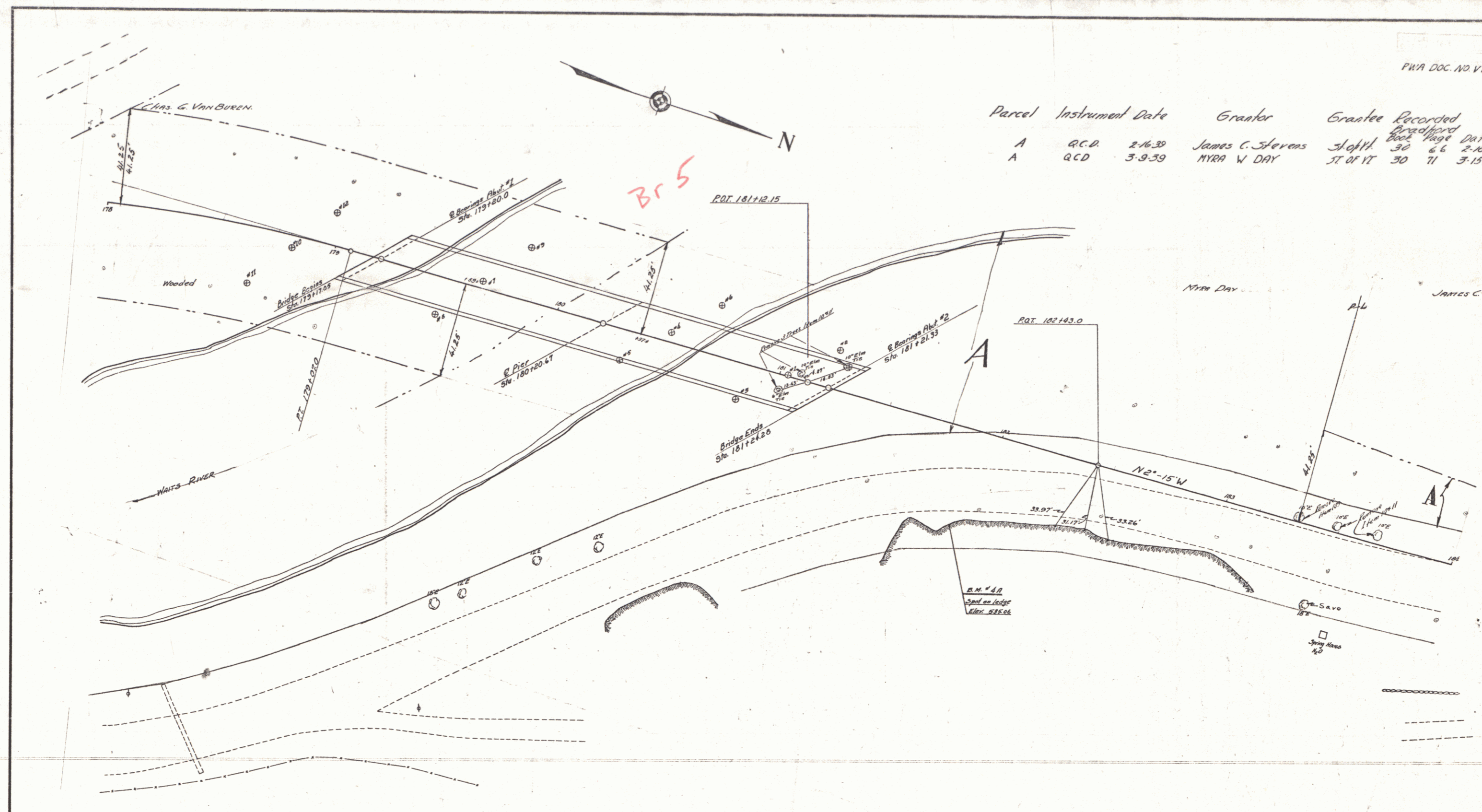
STRUCTURE	SHEET	DESCRIPTION
SB5C	SB5C	CABLE GUARD RAIL
SB11	SB11	BARRICADES, SIGNS & LIGHTS
SB20	SB20	DETAILS, P.L. & GEN. NOTES
S2B	S2B	PIPE CULVERTS
S30	S30	CABLE GUARD RAIL
S41	S41	ROUNDINGS OF SLOPES

DRAINAGE STRUCTURES									
STA.	OLD CUL. POS.	R.C.P.	RELAY PIPE	CRAM	TRENCH	EX. GUIDE	REMARKS		
		D	L					E	R
184+76		18"	68'					19	24
185+00	18" C.P.							11	2
185+40	18" C.P.		34'					19	25
TOTAL								60	4

Approved: \_\_\_\_\_  
District Highway Commissioner  
Correct: \_\_\_\_\_  
Bridge Engineer  
Approved: \_\_\_\_\_  
Commissioner of Highways

BRADFORD - CASSVILLE BRIDGE  
STATE 179L  
PWA DOC. NO. VT. 1020-2-F-C  
Surveyed by: A.D. WOOD & F.T. TIERNY  
Designed by: \_\_\_\_\_  
Drawn by: \_\_\_\_\_  
Traced by: W.J. BROCK  
Checked by: \_\_\_\_\_  
Series No. \_\_\_\_\_  
Sheet 1 of 23 Sheets

Parcel	Instrument Date	Grantor	Grantee	Recorded	Book	Page	Date
A	Q.C.D. 2-16-39	James C. Stevens	Bradford	30	66	2-18-39	
A	Q.C.D. 3-9-39	MYRA W DAY	ST of VT	30	71	3-15-39	



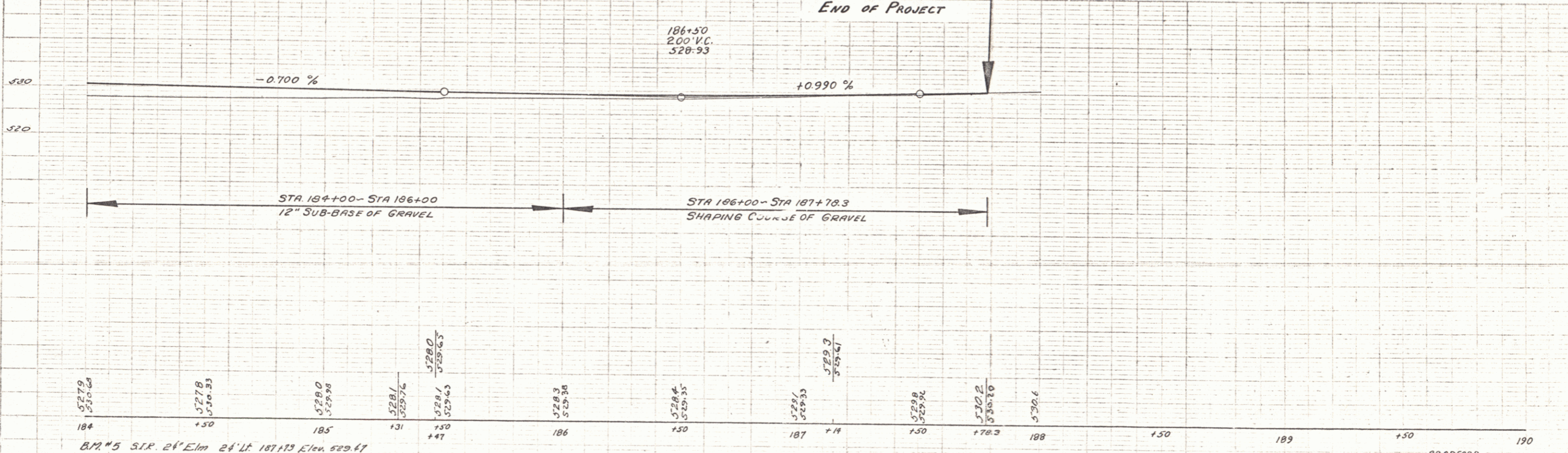
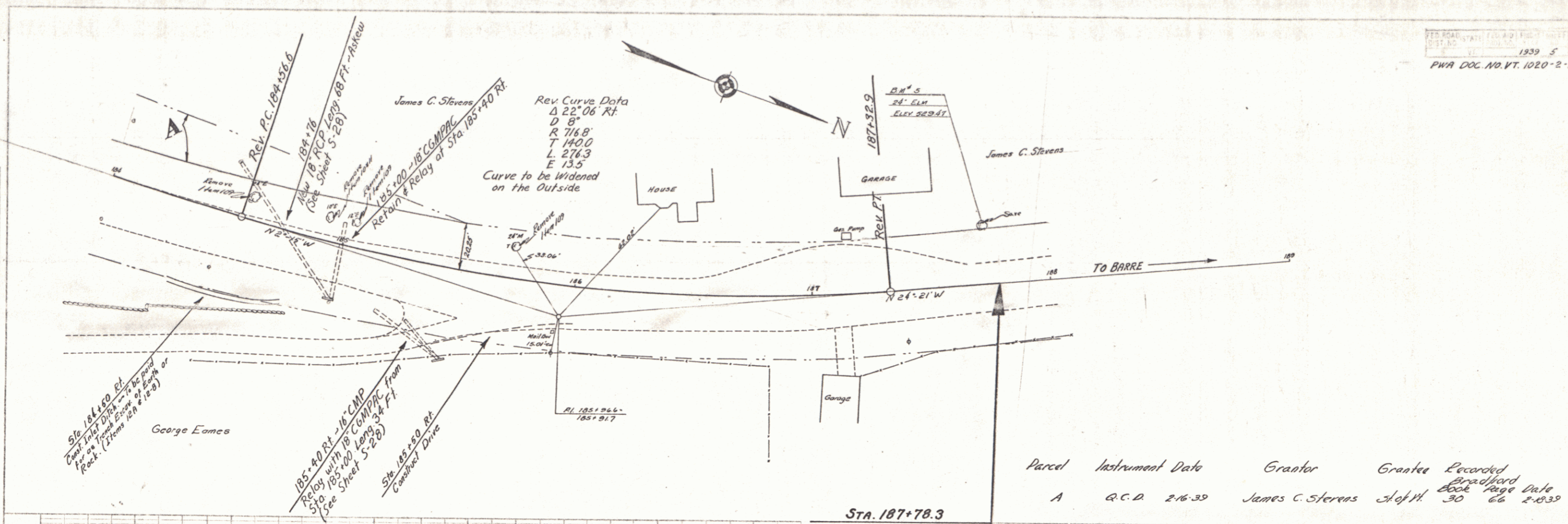
ESTIMATED QUANTITIES

--	--

BRADFORD - CASSVILLE BRIDGE  
STATE 189L  
PWA DOC. NO. VT. 1020-2-F-C

Surveyed by WOOD & TIERNY  
Designed by  
Drawn by W.J. BROCK  
Traced by  
Checked by  
Series No. Filed  
Sheet 3 of 23 Sheets





PLAN  
SCALE  
DATE  
BY  
CHECKED  
APPROVED

PROFILE  
SCALE  
DATE  
BY  
CHECKED  
APPROVED