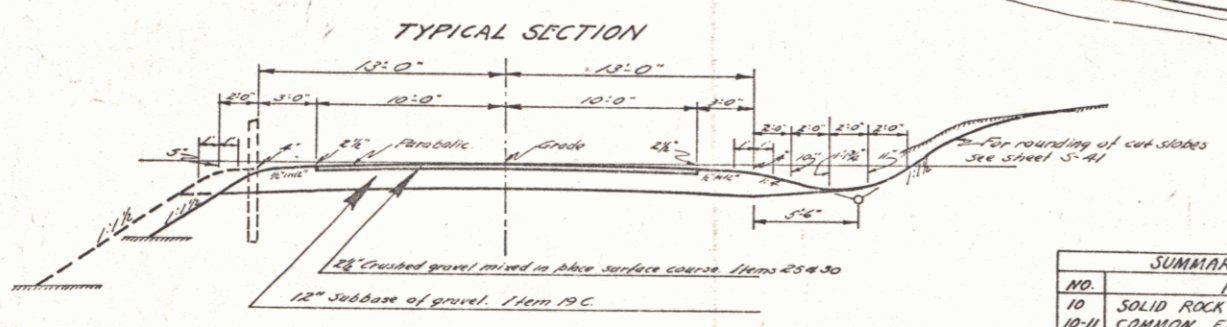
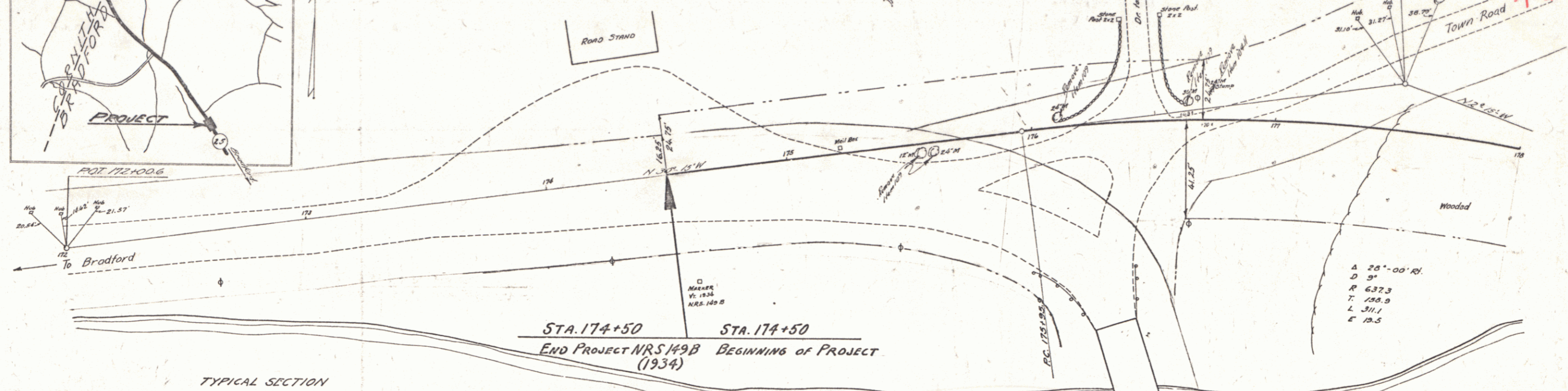


Note: The specification for "Cutting and Removing Trees", Item 109, shall be modified to include only such trees as measure twelve (12) inches or over in diameter, said diameter to be measured at a point two (2) feet above the ground line at the base of the tree.



TOWN OF BRADFORD  
Project ST 149  
Pin # 00R301  
Route VT 25  
Date 1/1/1939

MP 3.723-3.974  
RIGHT-OF-WAY DIVISION  
TOWN FILE  
PERPETUAL  
UT 25  
(To Be Returned To R.O.W. Division)

INDEX OF SHEET NUMBERS

NO.	DESCRIPTION
1	PLAN & PROFILE
2	WIDENING TABLES
3	NO. 1 DETAILS
4	NO. 2 DETAILS
5	STRUCTURE DETAILS
6	STRUCTURE SHEET
7	SB 5C - CABLE GUARD RAIL
8	SB 11 - BARRICADES, SIGNS & LIGHTS
9	SB 20 - DETAILS, P.L. & GEN. NOTES
10	S 2B - PIPE CULVERTS
11	S 30 - CABLE GUARD RAIL
12	S 41 - ROUNDINGS OF SLOPES

NO.	ITEM	AMOUNT
10	SOLID ROCK EXCAVATION (ESTIMATED)	100 CY
10-H	COMMON ROCK EXCAVATION INCL. BORROW	6100 CY
18A	TRENCH EXCAVATION OF EARTH	75 CY
18B	TRENCH EXCAVATION OF ROCK	8 CY
15	CHANNEL EXCAVATION	1500 CY
16	STRUCTURE EXCAVATION	304 CY
19	MAINTENANCE OF TRAFFIC	1 LS
19C	SUB-BASE OF GRAVEL	1500 CY
25	CRUSHED GRAVEL MIXED-IN-PLACE SUP. COURSE WITH REFINED TAR	230 CY
30	REFINED TAR	440 GAL
41A	CONCRETE CLASS A	195 CY
41B	CONCRETE CLASS B	158 CY
41C	CONCRETE CLASS C	105 CY
42	REINFORCING STEEL	39,105 LBS
43B	STEEL SUPERSTRUCTURE (285,000#)	1 LS
45	CEMENT RUBBLE MASONRY	4 CY
49C	18" REINFORCED CONCRETE PIPE	88 LF
54	RELINING PIPE CULVERTS	34 LF
57	REMOVAL OF PRES. SUPERSTRUCTURE	1 LS
70	WOOD GUARD RAIL	24 LF
80A	CABLE GUARD RAIL	1110.9 LF
80B	ANCHORS FOR CABLE GUARD RAIL	4 EG
83	GUIDE POSTS	1 EG
109	CUTTING & REMOVING TREES	8 EG

STA.	STA.	LT.	RT.	AMT.
177+2.68	179+02.8	176'	1	
177+37.8	179+29.8	192	1	
181+10	181+24	31/2	1	
181+57	184+49	31/2	1	
SUB-TOTAL BRIDGE		504	192	4
TOTAL		2072	2072	1110.9

STA.	STA.	LT.	RT.	AMT.
185+50			24'	

STA.	OLD CUR. POS.	R.C.P.	RELAY PIPE	CRAM	TRENCH EX.	GRADE	REMARKS
184+76	E	18"	68'		19	24'	ASHEM
185+00	S	18"	68'		11	24'	ASHEM
185+40	S	18"	68'		19	24'	ASHEM
TOTAL					60	4	

Approved: \_\_\_\_\_  
District Highway Commissioner  
Correct: \_\_\_\_\_  
Bridge Engineer  
Approved: \_\_\_\_\_  
Commissioner of Highways

BRADFORD - CASSVILLE BRIDGE  
STATE 179L  
PWA DOC. NO. VT. 1020-2-F-C  
Surveyed by: A.D. WOOD & F.T. TIERNY  
Designed by: \_\_\_\_\_  
Drawn by: \_\_\_\_\_  
Traced by: W.J. BROCK  
Checked by: \_\_\_\_\_  
Series No. \_\_\_\_\_  
Sheet 1 of 23 Sheets