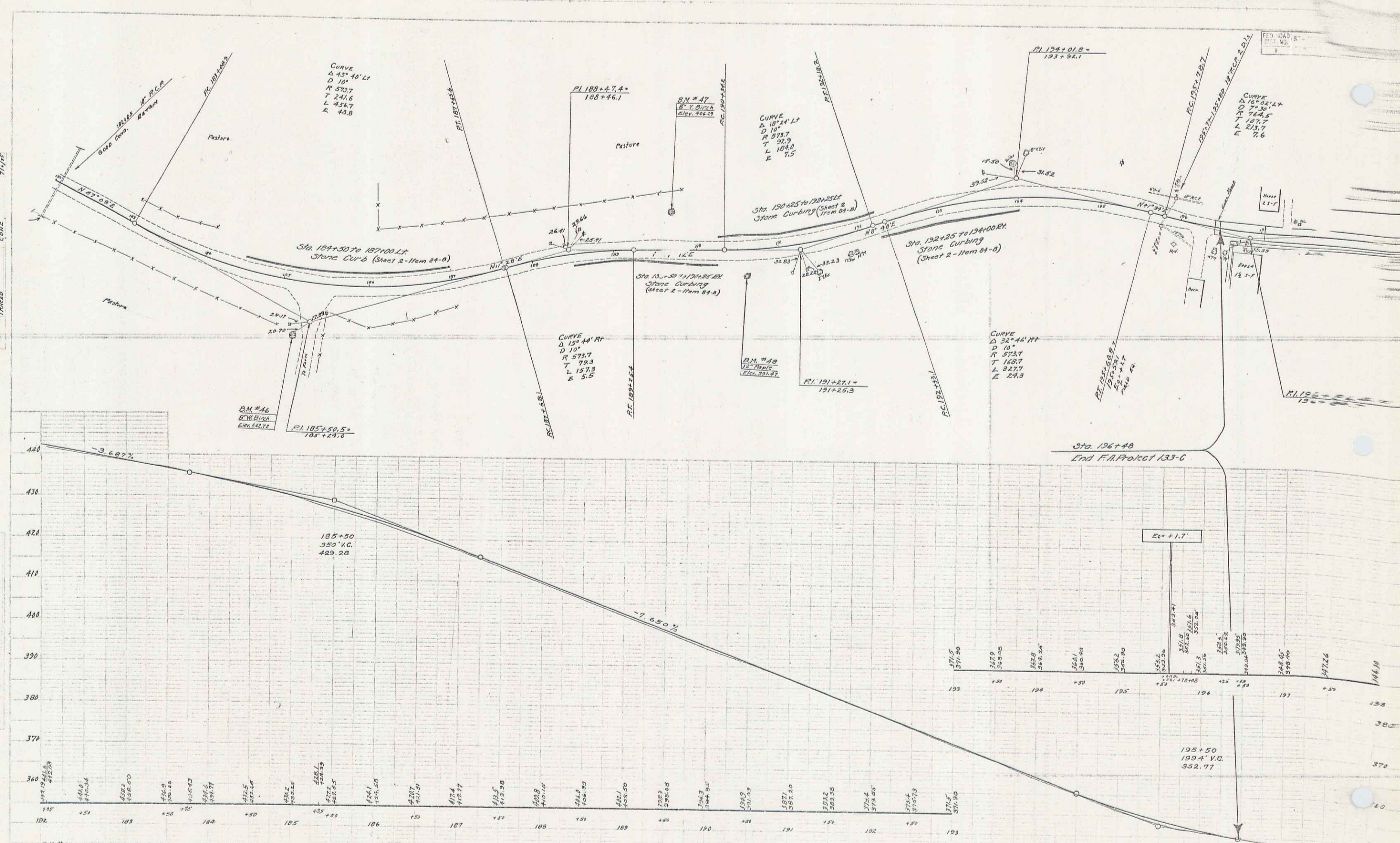


CONSTRUCTION  
 CONC. 7 1/2"

CONC. 4"



B.M. #46 SPICE IN ROOT 8 INCH WHITE BIRCH 70 FT. RT. STA. 185+29 ELEV. 442.72  
 B.M. #47 " " " " 6 " YELLOW BIRCH 42 FT. LT. STA. 183+09 ELEV. 408.29  
 B.M. #48 " " " " 12 " MAPLE 42 FT. RT. STA. 190+61 ELEV. 391.47

SERIES P.A.P. NO. 133-C  
 SHEET 5 OF 10  
 C5  
 14