

INDEX OF SHEETS

| | |
|-------------|-----------------------------------------------------------------------------------------------------------------|
| SHEET NO. 1 | TITLE PAGE |
| " 2 | TYPICAL CROSS-SECTION OF IMPROVEMENT (2" GRAVEL MIXED-IN-PLACE SURFACE COURSE WITH REFINED TAR 2 1/2-3 1/2 IN.) |
| " 3 | BANKING AND WIDENING TABLES |
| " 4-5 | PLAN AND PROFILE SHEETS |
| " 6 | STANDARD SHEET 530; GUARD RAIL |
| " 7 | " 540; BARRICADES, SIGNS & LIGHTS |
| " 8-11 | CROSS SECTIONS |

Standard sheet 530 approved by the Chief Engineer on Aug 15, 1933

STATE OF VERMONT
STATE HIGHWAY DEPARTMENT

PLAN AND PROFILE OF PROPOSED
STATE HIGHWAY

FEDERAL AID PROJECT

TOWN OF JOHNSON
HYDE PARK-JOHNSON ROAD

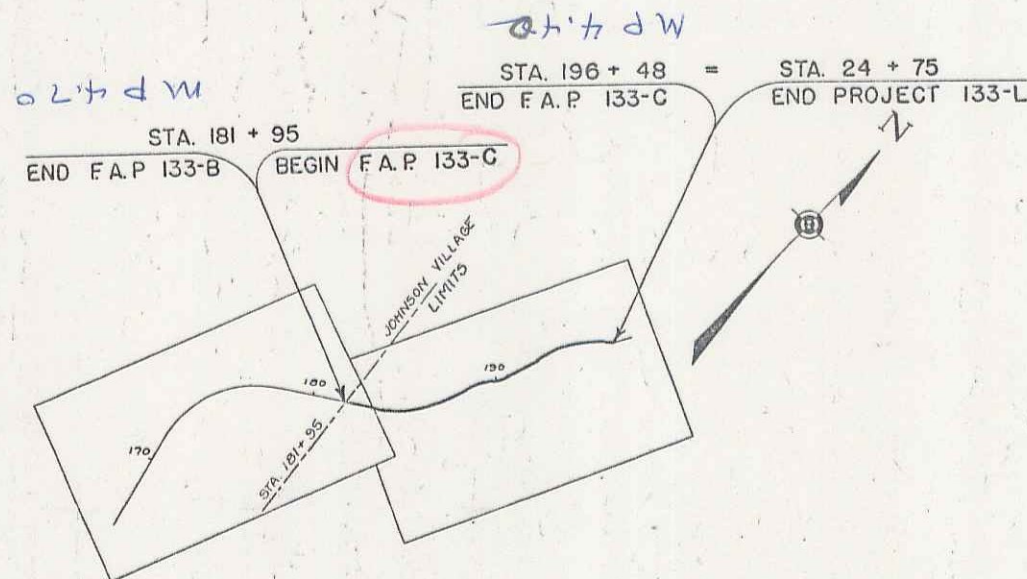
FROM THE JOHNSON VILLAGE LIMITS EASTERLY
0.275 MILES TO THE CONCRETE PAVEMENT.

LENGTH OF PROJECT 1454.7 FT. = 0.275 MILES

| | | | | | |
|---------------------|-------|--------------------|-------------|-----------|--------------|
| FED. ROAD DIST. NO. | STATE | FED. AID PROJ. NO. | FISCAL YEAR | SHEET NO. | TOTAL SHEETS |
| 9 | VT. | 133 C. | 1936 | 1 | 11 |



(To Be Returned to R.O.W. Division)
Town of Johnson
Right-of-Way Division



CONVENTIONAL SIGNS

| | |
|-------------------|-------|
| COUNTY LINE | _____ |
| TOWN LINE | _____ |
| STONE WALL | _____ |
| UNFENCED PROPERTY | _____ |
| GUARD RAIL | _____ |
| TRAVELED WAY | _____ |
| RAILROAD | _____ |
| RETAINING WALL | _____ |
| CENTER LINE | _____ |
| SURVEY LINE | _____ |
| CULVERT | _____ |
| DRAIN INLET | _____ |
| TROTTLE BOX | _____ |
| POWER POLE | _____ |
| TELEPHONE POLE | _____ |
| TRUSS | _____ |
| WIND | _____ |

| | | |
|------------------|-------|------|
| GROUND ELEVATION | DATUM | LINE |
| GRADE ELEVATION | DATUM | LINE |

CURVE DATA

| | |
|-----------------------|----------------|
| DEFLECTION ANGLE | Δ |
| DEGREE OF CURVE | D |
| RADIUS OF CURVE | R |
| TANGENT DISTANCE | T |
| LENGTH OF CURVE | L |
| EXTERNAL DISTANCE | E |
| POINT OF INTERSECTION | P. I. |
| POINT OF CURVE | P. C. |
| POINT OF TANGENT | P. T. |
| POINT ON TANGENT | P. O. T. |

SCALES

| | |
|--------------|-----------|
| TITLE | 1" = 500' |
| TYPICAL | 1" = 20' |
| PLAN | 1" = 50' |
| PROFILE HOR. | 1" = 50' |
| PROFILE VER. | 1" = 10' |

These plans are subject to such revisions as may be required by the Bureau of Public Roads or the Commissioner of Highways.
Construction is to be carried on in accordance with the plans and Standard Road and Bridge Specifications of 1930 including all subsequent approved revisions and such revised specifications as are submitted with the plans.

MM 0442 20470

APPROVED: August 1, 1935
H. S. August
COMMISSIONER OF HIGHWAYS

RECOMMENDED _____
DISTRICT ENGINEER BUREAU OF PUBLIC ROADS

RECOMMENDED FOR APPROVAL _____
CHIEF ENGINEER BUREAU OF PUBLIC ROADS

APPROVED _____
DIRECTOR - BUREAU OF PUBLIC ROADS

CORRECT: August 1, 1935
ROAD ENGINEER

SERIES F No 133 C FILED
SHEET 1 OF 11

C1 12
DIST. # 8 PLANS