

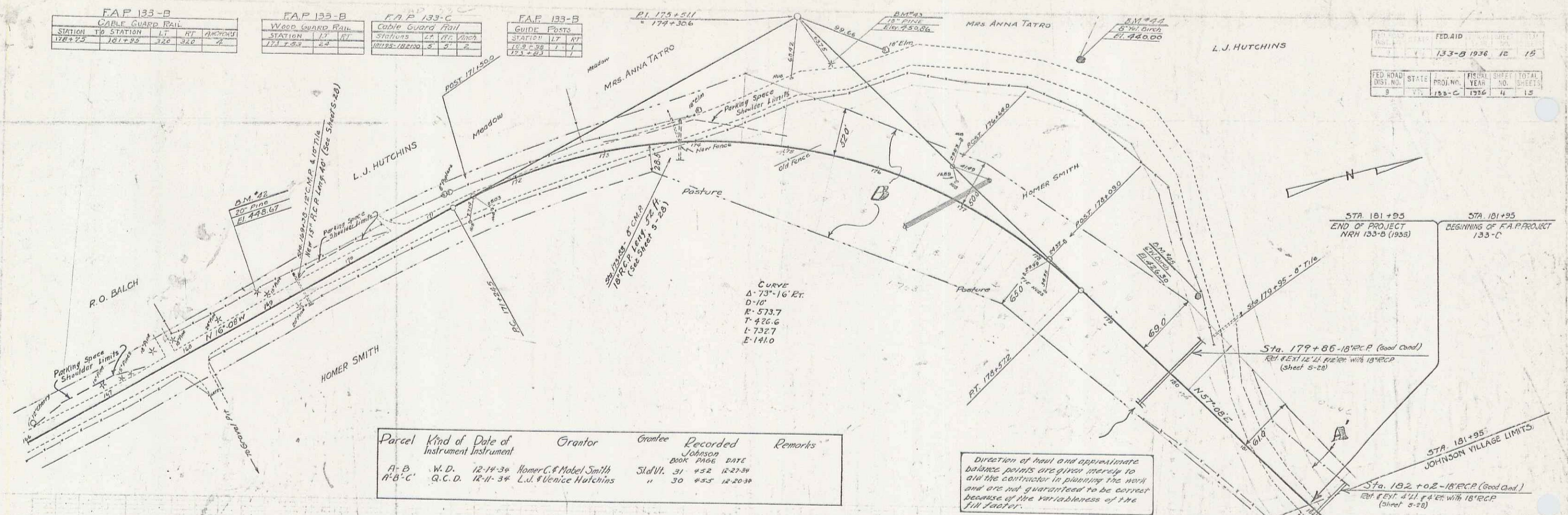
F.A.P. 133-B			
Cable Guard Rail			
STATION	TO STATION	RT	ANCHOR
176+25	181+25	322	322

F.A.P. 133-B			
Wood Guard Rail			
STATION	TO STATION	RT	ANCHOR
174+25	177+00	24	17

F.A.P. 133-C			
Cable Guard Rail			
STATIONS	TO STATIONS	RT	ANCHOR
177+00	182+00	5	5

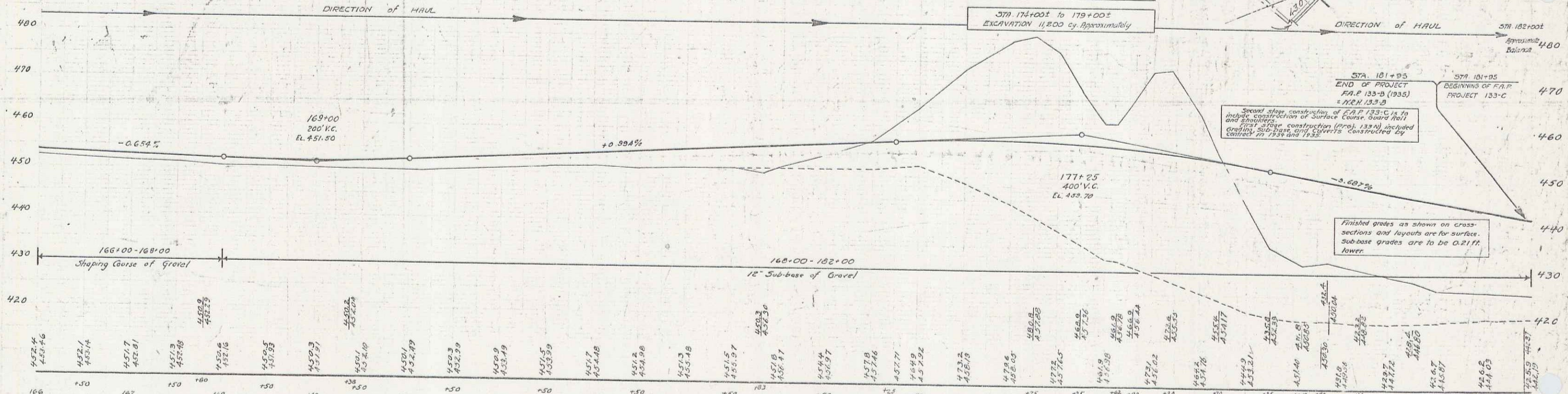
F.A.P. 133-B			
Guide Posts			
STATION	TO STATION	RT	ANCHOR
173+25	177+00	1	1

FED. AID	133-B	1936	12	15
PROJ. NO.	133-C	1936	4	15
SHEET NO.	12	OF	15	



Parcel	Kind of Instrument	Date of Instrument	Grantor	Grantee	Recorded	Remarks
A-B	W.D.	12-14-30	Homer C. & Mabel Smith	StalW. 31	452	12-27-34
A-B-C	Q.C.D.	12-11-34	L.J. & Venice Hutchins	"	30	453 12-20-38

Direction of haul and approximate balance points are given merely for aid the contractor in planning the work and are not guaranteed to be correct because of the variability of the fill factor.



Station	Elevation	Station	Elevation	Station	Elevation
166	457.4	171	453.59	176	452.4
167	457.1	172	451.7	177	451.5
168	457.0	173	451.3	178	451.2
169	457.0	174	451.0	179	451.1
170	456.9	175	450.9	180	451.0
171	456.8	176	450.8	181	450.9
172	456.7	177	450.7	182	450.8
173	456.6	178	450.6		
174	456.5	179	450.5		
175	456.4	180	450.4		
176	456.3	181	450.3		
177	456.2	182	450.2		
178	456.1				
179	456.0				
180	455.9				
181	455.8				
182	455.7				

AM #42 SPIKE IN ROOT 20" PINE 24 FT. LT. STA. 168+00 ELEV. 448.47  
 AM #43 " " " 15" PINE 95 FT. LT. " 175+30 ELEV. 450.66  
 AM #44 " " TRUNK 8" Y. BIRCH 195 FT. LT. " 177+30 ELEV. 490.00  
 AM #45 " " ROOT 6" W. BIRCH 85 FT. LT. " 179+30 ELEV. 426.30

SERIES F.A.P. No. 133-B  
 SHEET 12 OF 15  
 SHEET 12 OF 15