

INDEX OF SHEETS

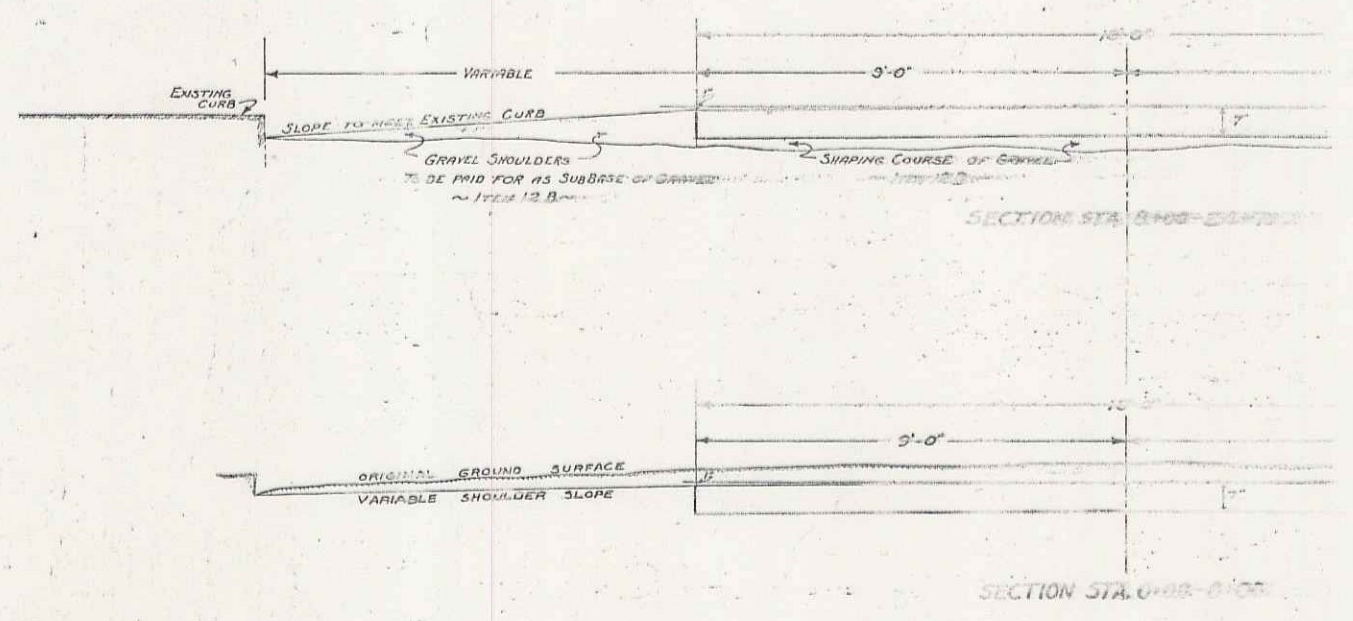
| | |
|-------|---|
| 1. | TITLE & TYPICAL SECTION |
| 2. | DETAILS OF CONSTRUCTION |
| 3-4. | PLAN & PROFILE SHEETS |
| 5. | STD. STRUCTURE SHEET 5-20 PIPE CULVERTS |
| 6. | " " " " 5-22 CATCH BASINS |
| 7. | " " " " 5-23 CURB & GUTTER |
| 8-12. | CROSS SECTION SHEETS |

POOR ORIGINAL COPY

STREET PROJECT
IN
JOHNSON VILLAGE

ONE COURSE CEMENT CONCRETE PAVEMENT
LENGTH OF PROJECT 24750 FEET OR 0.466 MILES

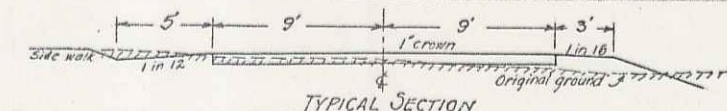
Town: Johnson
Project No. S 133L
Date: 6/1/32
Pin# 000297
Rte. VT 15



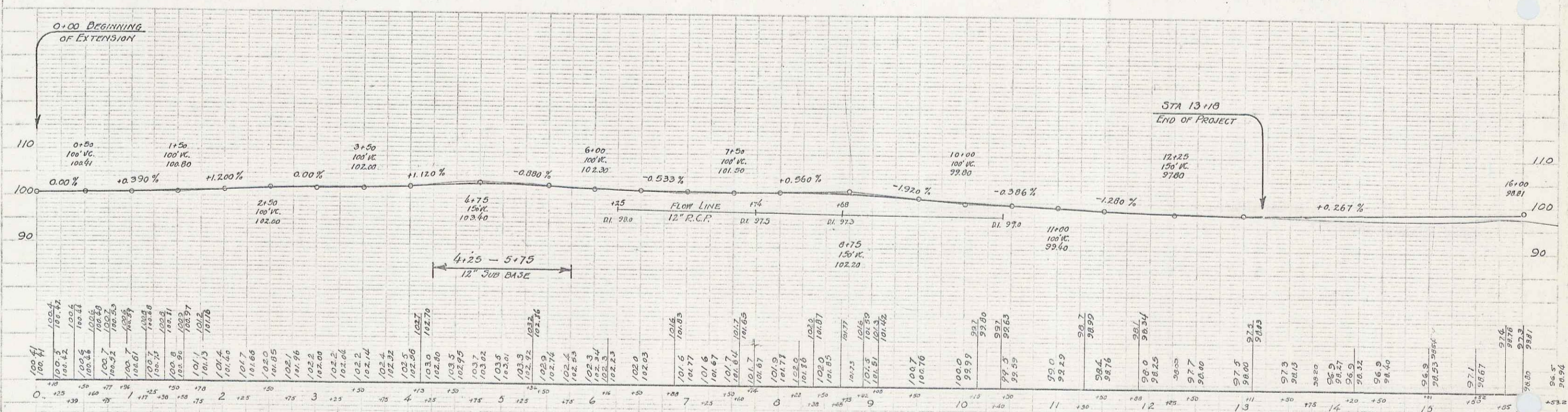
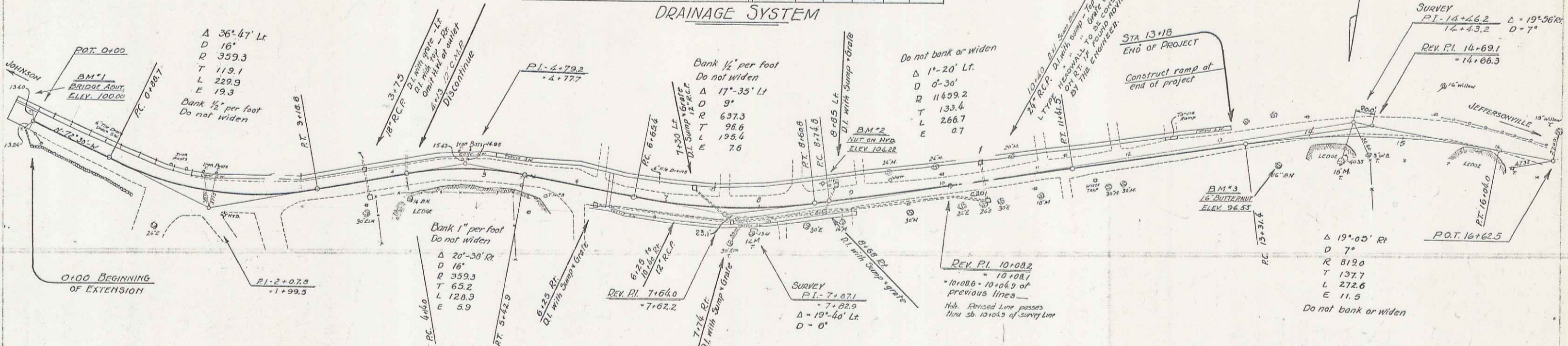
MP 3.68 - MP 4.40
RIGHT-OF-WAY DIVISION
TOWN FILE
PERPETUAL
Rt. of VT 15
(To Be Returned To R.O.W. Division)

INDEX OF SHEETS -
 Sheet 1 Layout & Typical Section
 Sheet 2 5th Street Sheet 3-20
 3-6 Cross Sections

| STATION TO STATION | L.R. | R.C.P. DIAM. | R.C.P. LENGTH | STATION POSITION | CONC. | STEEL GRADE | REMARKS |
|--------------------|------|--------------|---------------|------------------|-------|-------------|---------|
| 3+75 | E | 18" | 40' | 3+75 | LT | 1.8 | 152 |
| 6+25 | RT | 12" | 148' | 3+75 | RT | 2.1 | 189 |
| 7+30 | RT | 12" | 56' | 6+25 | RT | 1.7 | 146 |
| 7+76 | RT | 12" | 95' | 7+76 | RT | 2.0 | 189 |
| 8+85 | E | 12" | 36' | 7+76 | LT | 1.7 | 146 |
| 8+68 | RT | 12" | 172' | 8+68 | RT | 1.3 | 152 |
| 10+40 | E | 24" | 48' | 8+68 | LT | 1.7 | 146 |
| | | | | 10+40 | LT | 1.7 | 146 |
| | | | | 10+40 | RT | 2.1 | 189 |



DRAINAGE SYSTEM

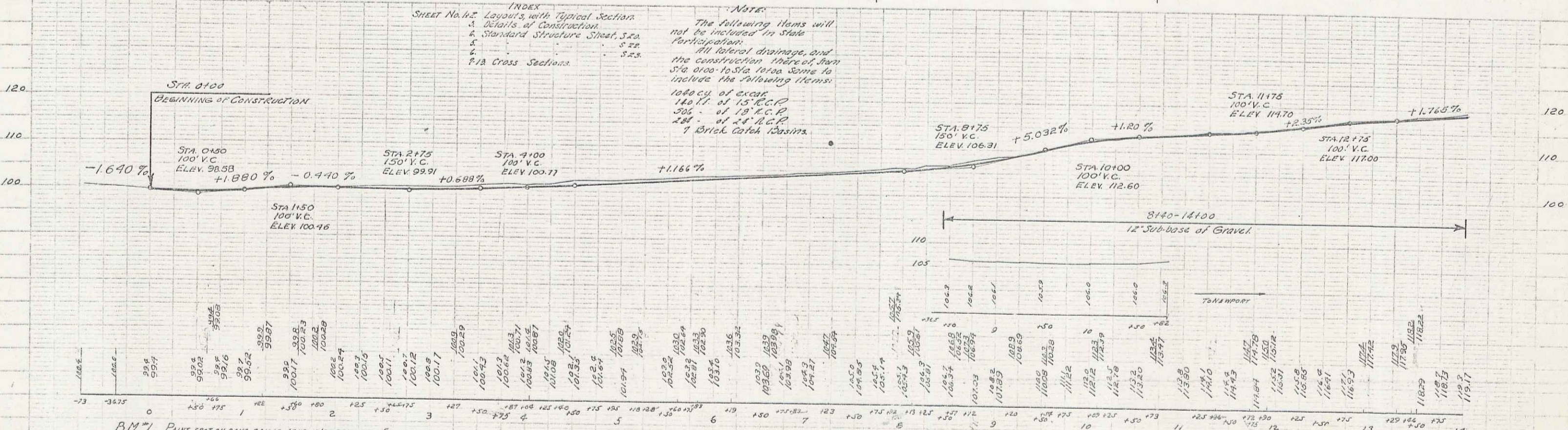
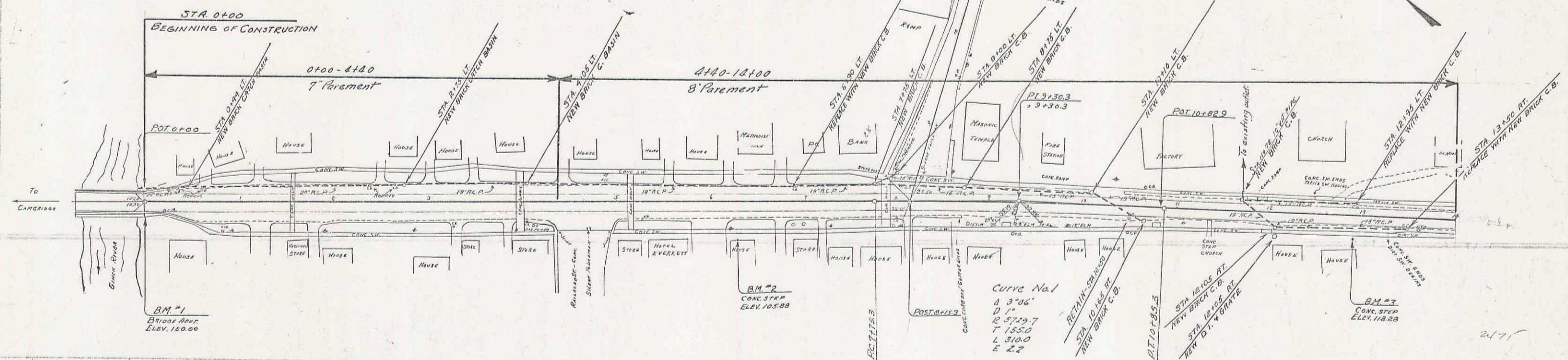


BM *1 SPOT ON SOUTH-EAST ABUT. OF BRIDGE 17' LT. STA 0-75 ELEV. 100.00
 BM *2 NUT ON HEAD OF HYDRANT 15' LT. STA 8+70 ELEV. 104.22
 BM *3 SPIKE IN ROOT OF 16\"/>

JOHNSON VILLAGE - WEST
 SERIES - S 133 L
 JUNE 1932

| NEW BRICK CATCH BASINS REQUIRED | | NEW REIN. CONC. PIPE REQUIRED | | DROP INLETS REQUIRED | |
|---------------------------------|--------------------|-------------------------------|--------|----------------------|--------------------|
| STATION | STATIONS | DIAM. | LENGTH | STATION | CONC. STEEL GRATES |
| 0+44 LT. | 0+00LT - 0+44LT. | 24 | 44 | 12+05RT. | 1, 99 |
| 2+75 LT. | 0+44LT - 2+75LT. | 24 | 230 | | |
| 4+05 LT. | 2+75LT - 4+05LT. | 18 | 132 | | |
| 6+30 LT. | 4+05LT - 6+30LT. | 18 | 226 | | |
| 7+75 LT. | 6+30LT - 7+75LT. | 18 | 88 | | |
| 8+00 LT. | 7+75LT - 8+00LT. | 15 | 28 | | |
| 8+75 LT. | 8+00LT - 8+75LT. | 15 | 96 | | |
| 10+10 LT. | 8+75LT - 10+10LT. | 15 | 140 | | |
| 10+65 RT. | 10+10LT - 10+65RT. | 15 | 60 | | |
| 11+72 LT. | 10+65RT - 11+72LT. | 18 | 94 | | |
| 12+05 RT. | 11+72LT - 12+05RT. | 18 | 8 | | |
| 12+95 LT. | 12+05RT - 12+95LT. | 15 | 144 | | |
| 13+50 RT. | 12+95LT - 13+50RT. | 15 | 128 | | |

1931 1 13



INDEX
 Sheet No. 12
 1. Layouts, with Typical Section
 2. Details of Construction
 3. Standard Structure Sheet, S.S.A.
 4. S.S.
 5. S.S.
 6. S.S.
 P/A Cross Sections.

NOTE:
 The following items will not be included in State Participation:
 All lateral drainage, and the construction thereof, from STA 0+00 to STA 12+10. Some to include the following items:
 100% of cost
 140% of 15' R.C.P.
 30% of 18' R.C.P.
 28% of 24' R.C.P.
 7 Brick Catch Basins.

BM #1 PAINT SPOT ON CONC. BRIDGE ABUT. 17 RT. STA. 0+00 ELEV. 100.00
 BM #2 RIDDLE BRGS. STAKE. PAINT SPOT ON CONC. STEP RAIL 915 RT. STA. 6+25 ELEV. 105.88
 BM #3 PAINT SPOT ON CONC. STEP 25 RT. STA. 12+30 ELEV. 118.28.

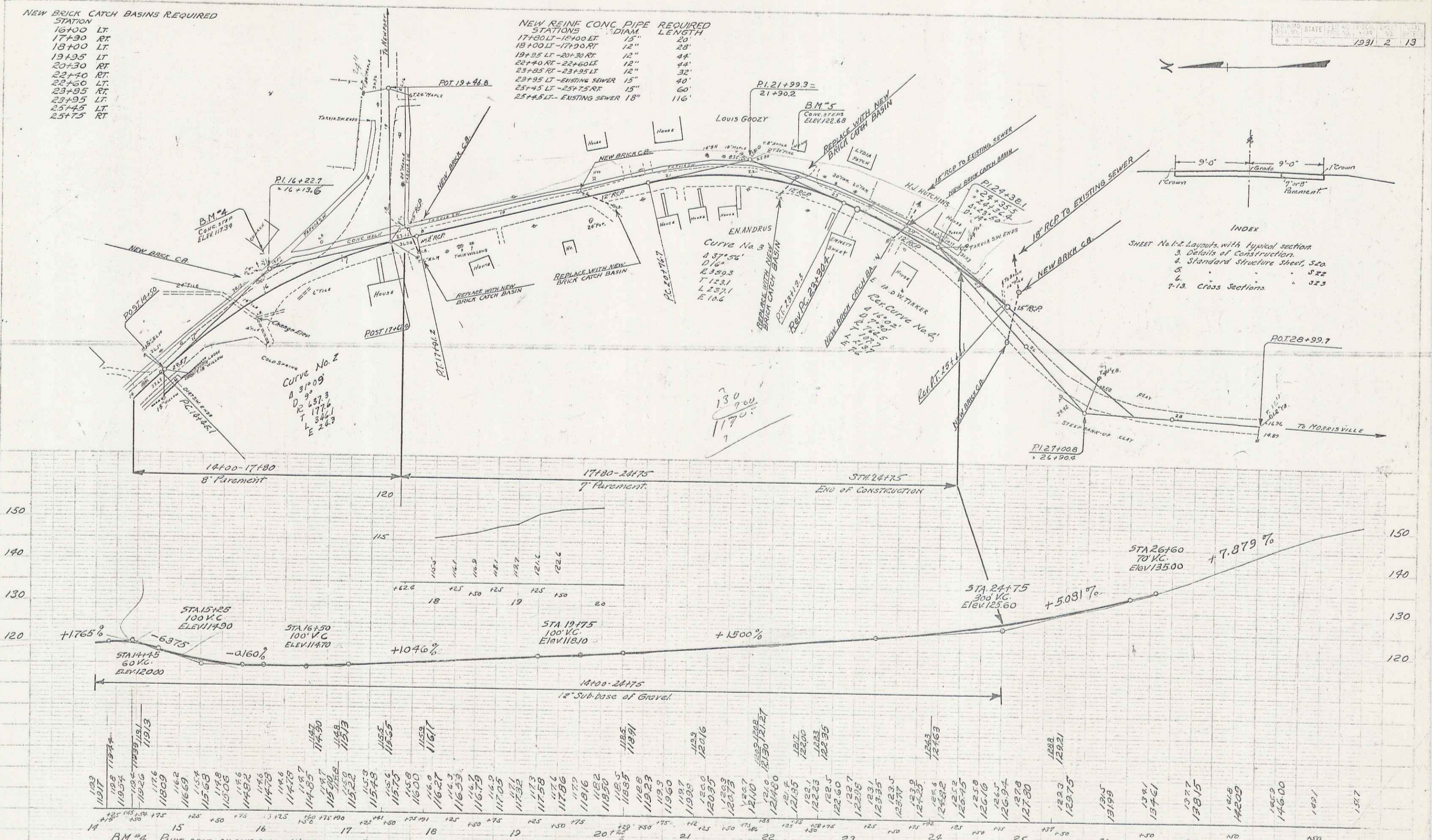
TOWN OF UGHMAN
 PROPOSED STREET IMPROVEMENT ON ROUTE 13
 CAMBRIDGE - MORRISVILLE ROAD
 SHEET 1 OF 13

NEW BRICK CATCH BASINS REQUIRED

| STATION | TYPE |
|---------|------|
| 16+00 | LT |
| 17+30 | RT |
| 18+00 | LT |
| 19+35 | LT |
| 20+30 | RT |
| 22+40 | RT |
| 23+60 | LT |
| 23+95 | RT |
| 25+45 | LT |
| 25+75 | RT |

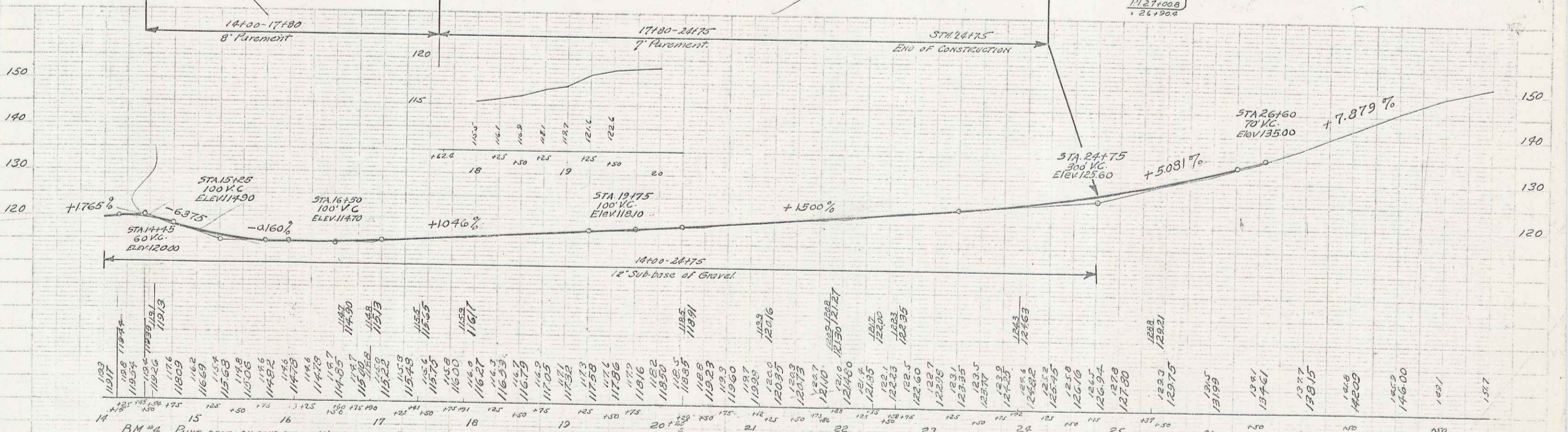
NEW REINF CONC PIPE REQUIRED

| STATIONS | DIAM. | LENGTH |
|---------------------------|-------|--------|
| 17+00 LT - 18+00 RT | 15" | 20' |
| 18+00 LT - 17+30 RT | 12" | 28' |
| 19+35 LT - 20+30 RT | 12" | 44' |
| 22+40 RT - 23+60 LT | 12" | 44' |
| 23+60 RT - 23+95 LT | 12" | 30' |
| 23+95 LT - EXISTING SEWER | 15" | 40' |
| 25+45 LT - 25+75 RT | 15" | 60' |
| 25+45 LT - EXISTING SEWER | 18" | 116' |



INDEX

- 1. SHEET No. 1 - Layouts with typical section
- 2. Details of Construction
- 3. Standard Structure Sheet, 522
- 4. Standard Structure Sheet, 522
- 5. Standard Structure Sheet, 522
- 6. Standard Structure Sheet, 522
- 7-13. Cross Sections



BM #4 PRINT SPOT ON CONC STEP 4 1/2" STA. 16+29 ELEV. 117.34
 BM #5 PRINT SPOT ON CONC STEPS 4 1/2" STA. 22+70 ELEV. 122.48

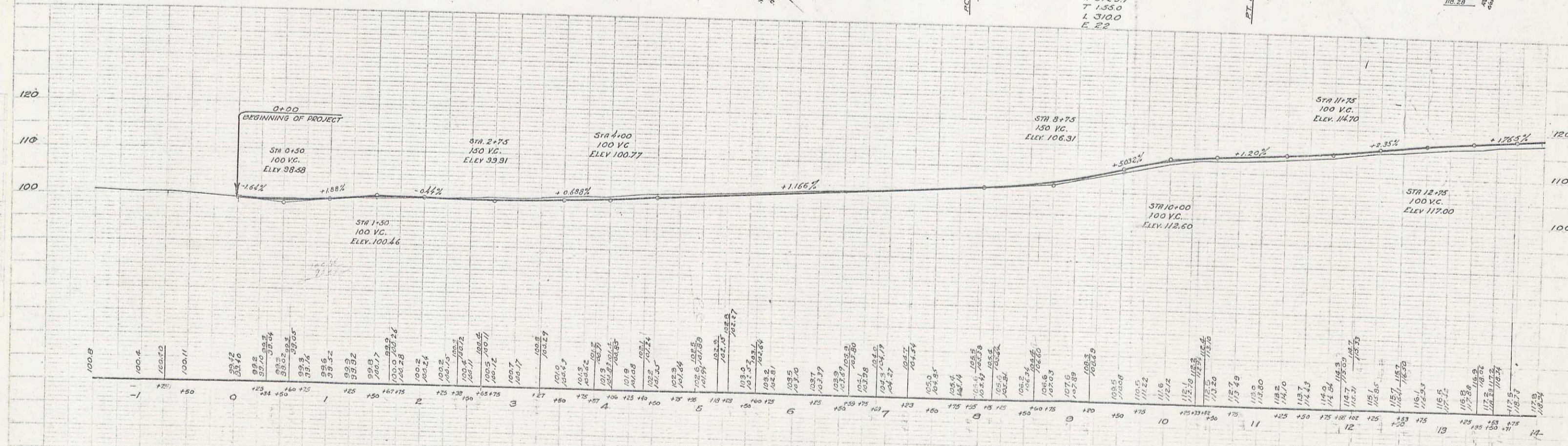
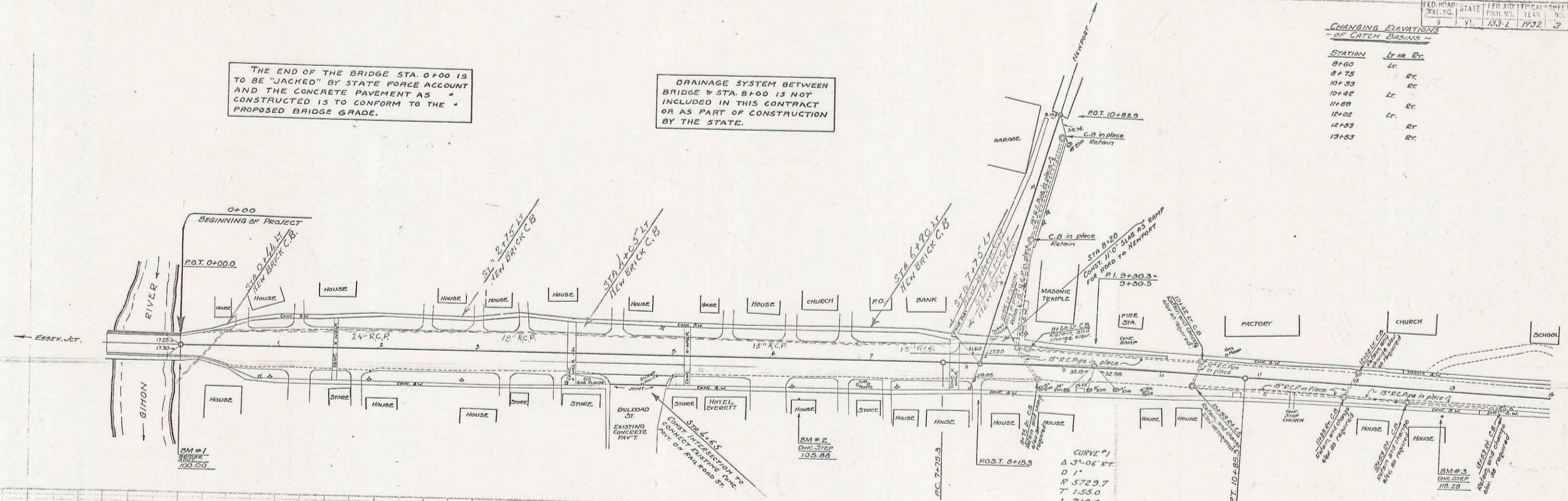
TOWN OF JOHNSON
 PROPOSED STREET IMPROVEMENT ON ROUTE 15
 CAMBRIDGE-MORRISVILLE ROAD.
 SHEET 2 OF 13

CHANGING ELEVATIONS OF CATCH BASINS

| STATION | Gr. or Ex. |
|---------|------------|
| 8+60 | Gr. |
| 8+75 | Gr. |
| 10+33 | Gr. |
| 10+40 | Gr. |
| 11+88 | Gr. |
| 12+02 | Gr. |
| 12+53 | Gr. |
| 13+53 | Gr. |

THE END OF THE BRIDGE STA 0+00 IS TO BE "JACKED" BY STATE FORCE ACCOUNT AND THE CONCRETE PAVEMENT AS CONSTRUCTED IS TO CONFORM TO THE PROPOSED BRIDGE GRADE.

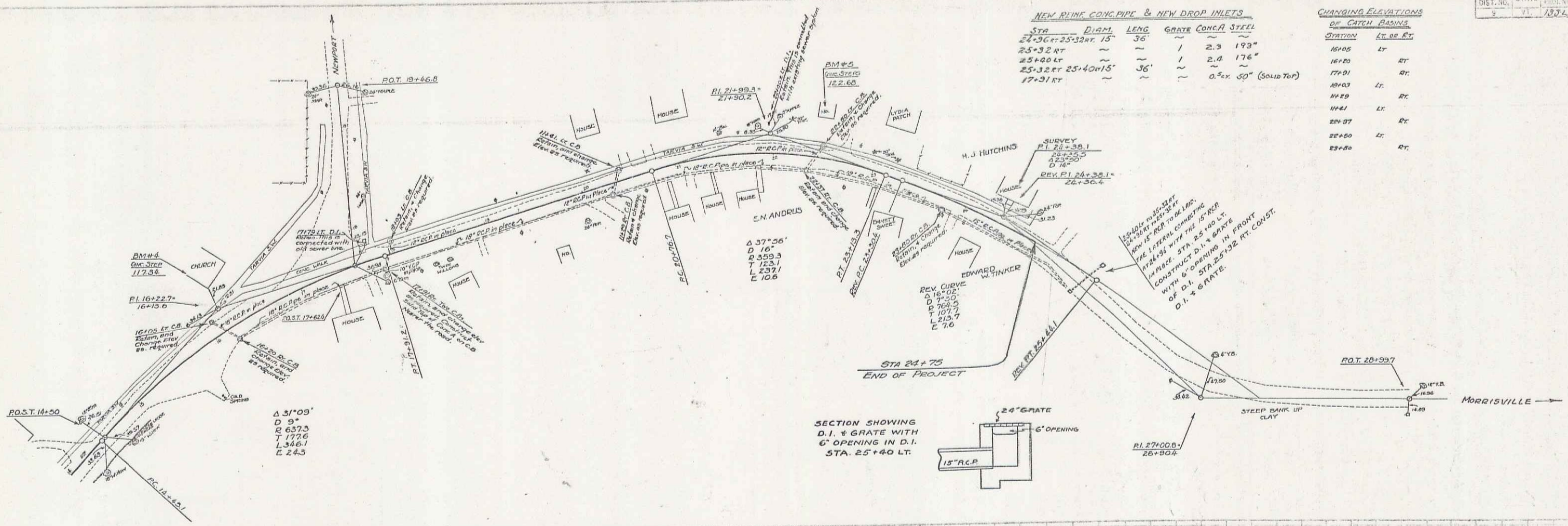
DRAINAGE SYSTEM BETWEEN BRIDGE & STA 8+00 IS NOT INCLUDED IN THIS CONTRACT OR AS PART OF CONSTRUCTION BY THE STATE.



1337

S/12
S/102
S/101

5

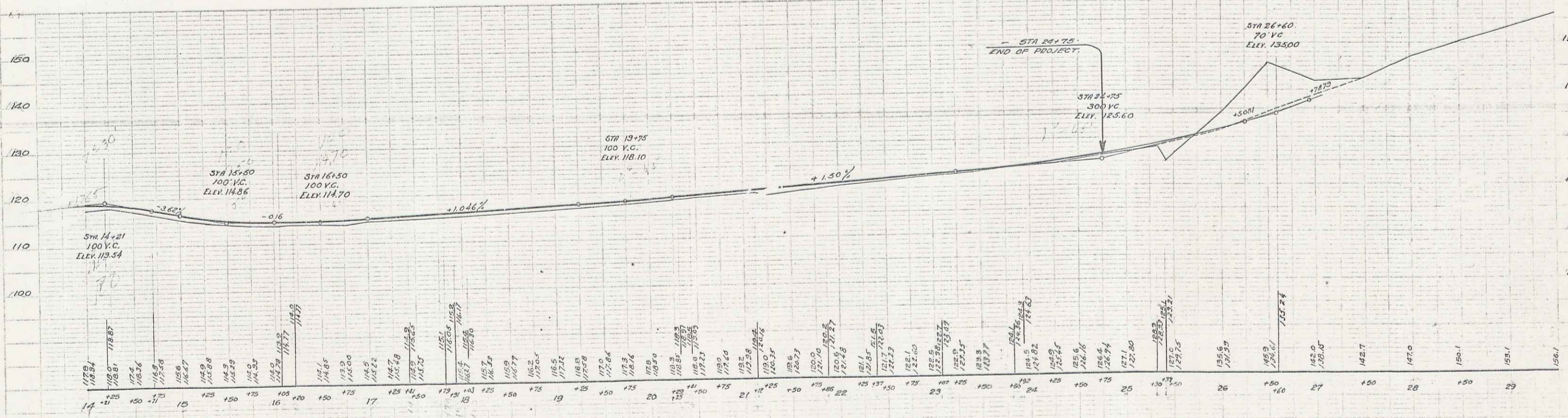


NEW RINK CONC PIPE & NEW DROP INLETS

| STA | DIAM | LENG | GRATE | CONCR | STEEL |
|----------|----------|------|-------|--------|-----------------|
| 24+30.00 | 25.32 RT | 15' | 36" | 1 | 2.3 193" |
| 25+00.00 | 25.32 RT | ~ | ~ | 1 | 2.0 176" |
| 25+32.25 | 25.40 RT | 15' | 36" | ~ | ~ |
| 27+31.00 | ~ | ~ | ~ | 0.2 ex | 50" (SOLID TOP) |

CHANGING ELEVATIONS OF CATCH BASINS

| STATION | LT. OR RT. |
|---------|------------|
| 16+05 | LT. |
| 17+01 | RT. |
| 18+03 | LT. |
| 19+09 | RT. |
| 19+81 | LT. |
| 20+07 | RT. |
| 22+00 | LT. |
| 23+00 | RT. |



6